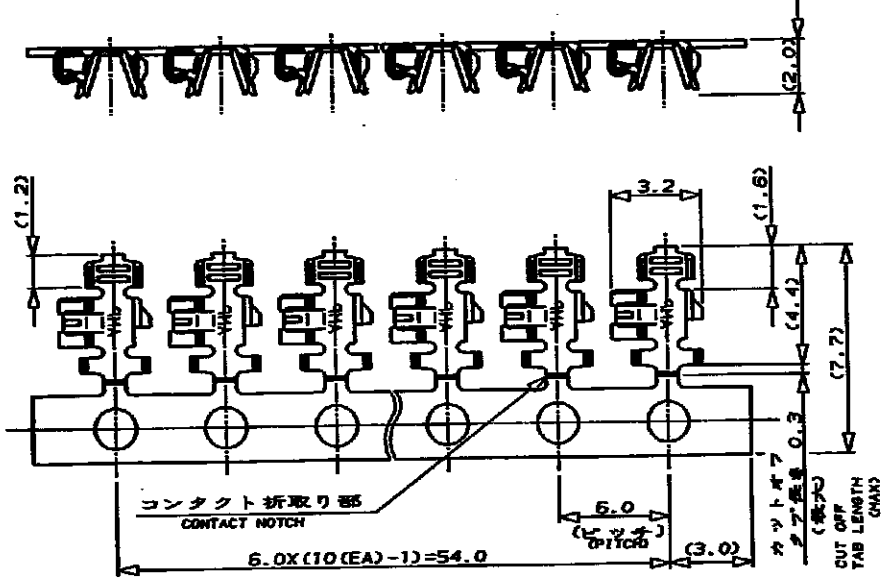


NUMBER C-175161  
 METRIC  
 3rd ANGLE PROJECTION

1-175161-1 : 本図  
 1-175161-1 : AS SHOWN



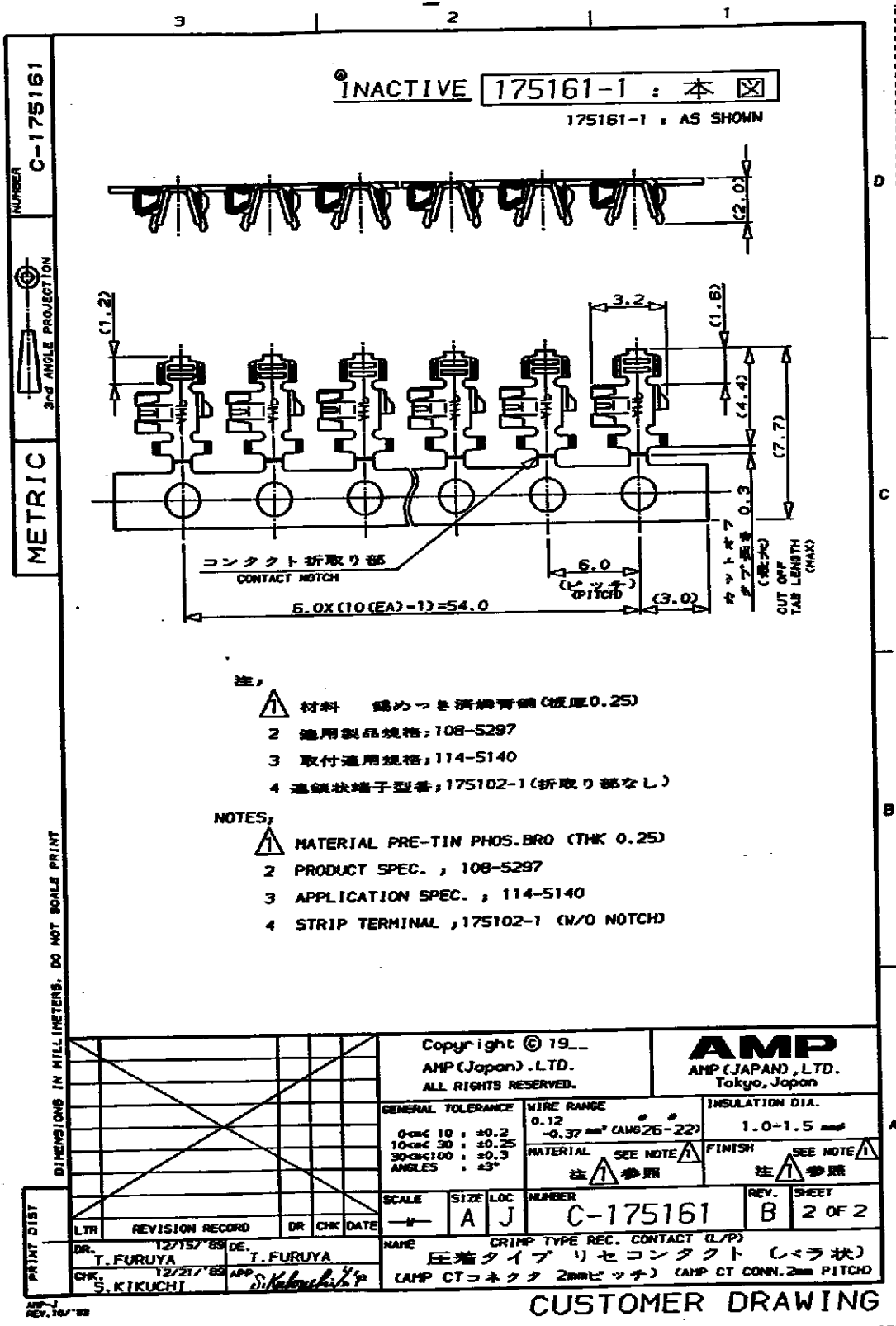
- 注;
- 1 材料 錫めっき済磷青銅 (板厚0.25)
  - 2 通用製品規格, 108-5297
  - 3 取付通用規格, 114-5140
  - 4 温度端子型番, 1-175102-1 (折取り部なし)

- NOTES,
- 1 MATERIAL PRE-TIN PHOS.BRO (THK 0.25)
  - 2 PRODUCT SPEC. , 108-5297
  - 3 APPLICATION SPEC. , 114-5140
  - 4 STRIP TERMINAL , 1-175102-1 (W/O NOTCH)

DIMENSIONS IN MILLIMETERS. DO NOT SCALE PRINT

		Copyright © 19__		<b>AMP</b> AMP (JAPAN) LTD. Tokyo, Japan	
		AMP (Japan) LTD. ALL RIGHTS RESERVED.			
		GENERAL TOLERANCE	WIRE RANGE	INSULATION DIA.	
		0-10mm 10 : ±0.2	0.12	1.0-1.5 mmf	
		10-30mm 30 : ±0.25	-0.37 mm <sup>2</sup> (AWG26-22)	MATERIAL SEE NOTE 1	
		30-100mm 100 : ±0.3	注 1 参照	FINISH SEE NOTE 2	
		ANGLES : ±3°			
PRINT DIST	SCALE	SIZE	LOC	NUMBER	REV. SHEET
	→	A	J	C-175161	B 1 OF 2
DR. T. FURUYA	12/15/88	DE. T. FURUYA	NAME CRIMP TYPE REC. CONTACT (L/P)		
CHK. S. KIKUCHI	12/21/88	APP. S. Kikuchi	圧着タイプ リセコンタクト (バラ状)		
			(AMP CTコネクタ 2mmピッチ) (AMP CT CONN. 2mm PITCH)		

CUSTOMER DRAWING



DIMENSIONS IN MILLIMETERS. DO NOT SCALE PRINT

NUMBER C-175161



METRIC

PRINT DIST

Copyright © 19__ AMP (Japan) .LTD. ALL RIGHTS RESERVED.		<b>AMP</b> AMP (JAPAN) ,LTD. Tokyo, Japan	
GENERAL TOLERANCE 0<math>mm</math> 10 : ±0.2 10<math>mm</math> 30 : ±0.25 30<math>mm</math> 100 : ±0.3 ANGLES : ±3°		WIRE RANGE 0.12 -0.37 mm <sup>2</sup> (AWG26-22)	INSULATION DIA. 1.0-1.5 mm
SCALE 1:1		SIZE A	LOC J
REVISION RECORD		NUMBER C-175161	REV. SHEET B 2 OF 2
LTR	DR	CHK	DATE
DR. T. FURUYA	12/15/68	DE. T. FURUYA	
CHK. S. KIKUCHI	12/21/68	APP. <i>S. Kikuchi</i>	
NAME CRIMP TYPE REC. CONTACT (L/P) 圧着タイプリセコンタクト (レラ状) (AMP CTコネクタ 2mmピッチ) (AMP CT CONN. 2mm PITCH)			

CUSTOMER DRAWING

单击下面可查看定价，库存，交付和生命周期等信息

[>>TE Connectivity\(泰科\)](#)