
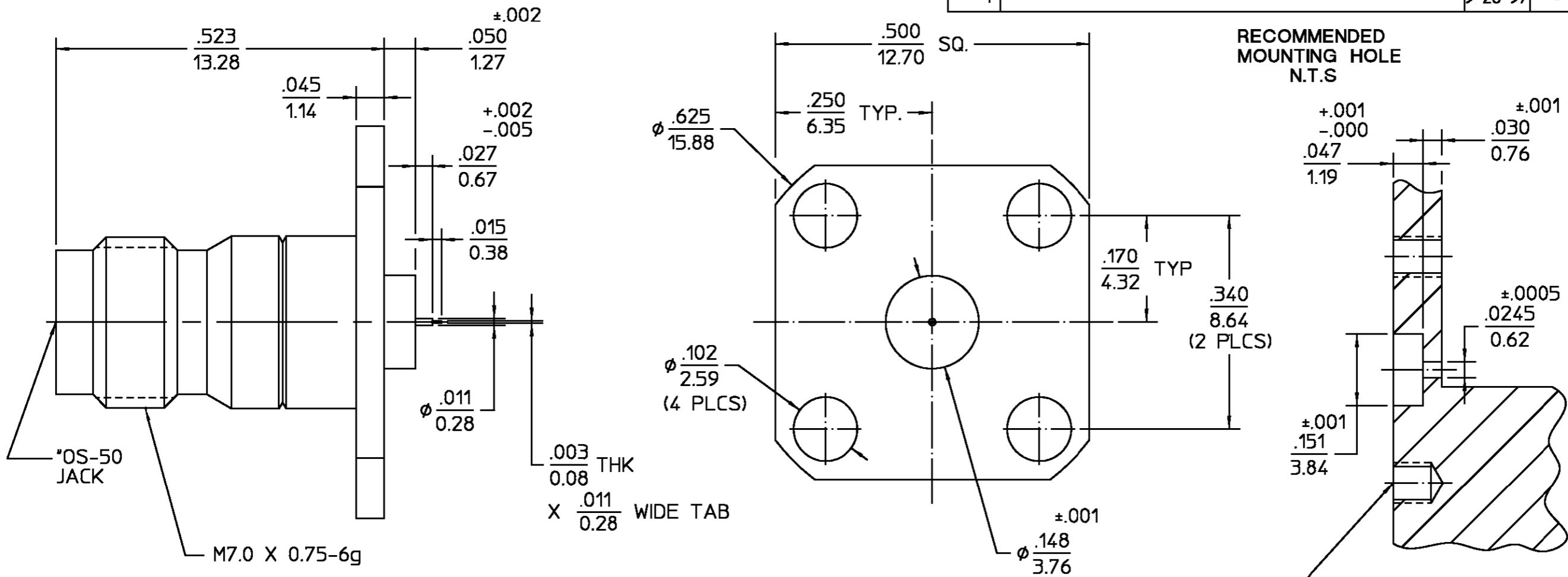


REVISIONS			
REV	DESCRIPTION	DATE	APPROVED
01 ₁	REVISED	KYLE 9-26-97	 10/21/97



RECOMMENDED LAUNCH GEOMETRY

SUBSTRATE	.010 / .015
LINE SIZE	.012 / .018

.XXX = in
XX.X = mm (REF)

HOUSING BUSHING	STAINLESS STEEL PER ASTM-A484 AND ASTM-A582, TYPE 303	PASSIVATE PER QQ-P-35	UNLESS OTHERWISE SPECIFIED DIMENSIONS ARE IN INCHES FRAC. DEC. ANGLES ± 1/64 ±.005 ± 1°	DRAWN BY S.M 8-15-88	AMP Incorporated 140 Fourth Avenue Waltham, MA 02451-7599			
DIELECTRIC	PTFE FLUOROCARBON PER ASTM-D-1457	N/A		CHECKED BY DAC 6-19-90				
CENTER CONTACT	BERYLLIUM COPPER PER ASTM-B-196 OR ASTM-B-197, ALLOY C17300, CONDITION H	GOLD PLATE PER MIL-G-45204	These drawings and specifications are the property of M/A COM Interconnect Div. and shall not be reproduced or copied or used in whole or in part as the basis for the manufacture or sale of item(s) without written permission.	APPD BY SR 6-19-90	TITLE "OS-50" JACK 4 HOLE FLANGE MOUNT TO MICROSTRIP			
COMPONENT	MATERIAL	FINISH		USE ASSY PROCEDURE		NO. A.P. N/A	SIZE B	CODE IDENT NO. 26805
					SCALE 6:1	SHEET 1 OF 1		

CUSTOMER DRAWING

AMP PART # 1063357-1
SHEET 1 OF 1 REV A

单击下面可查看定价，库存，交付和生命周期等信息

[>>TE Connectivity\(泰科\)](#)