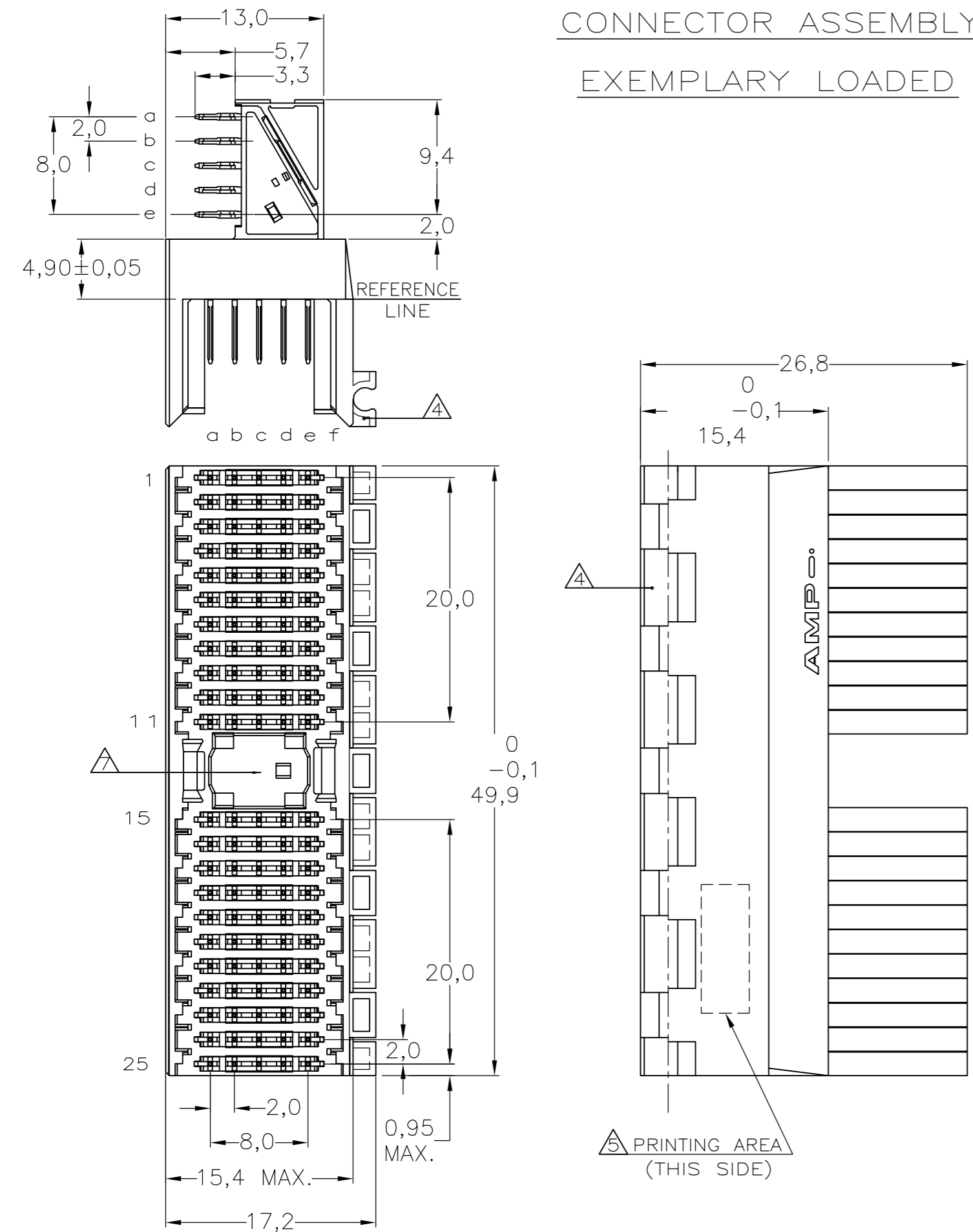


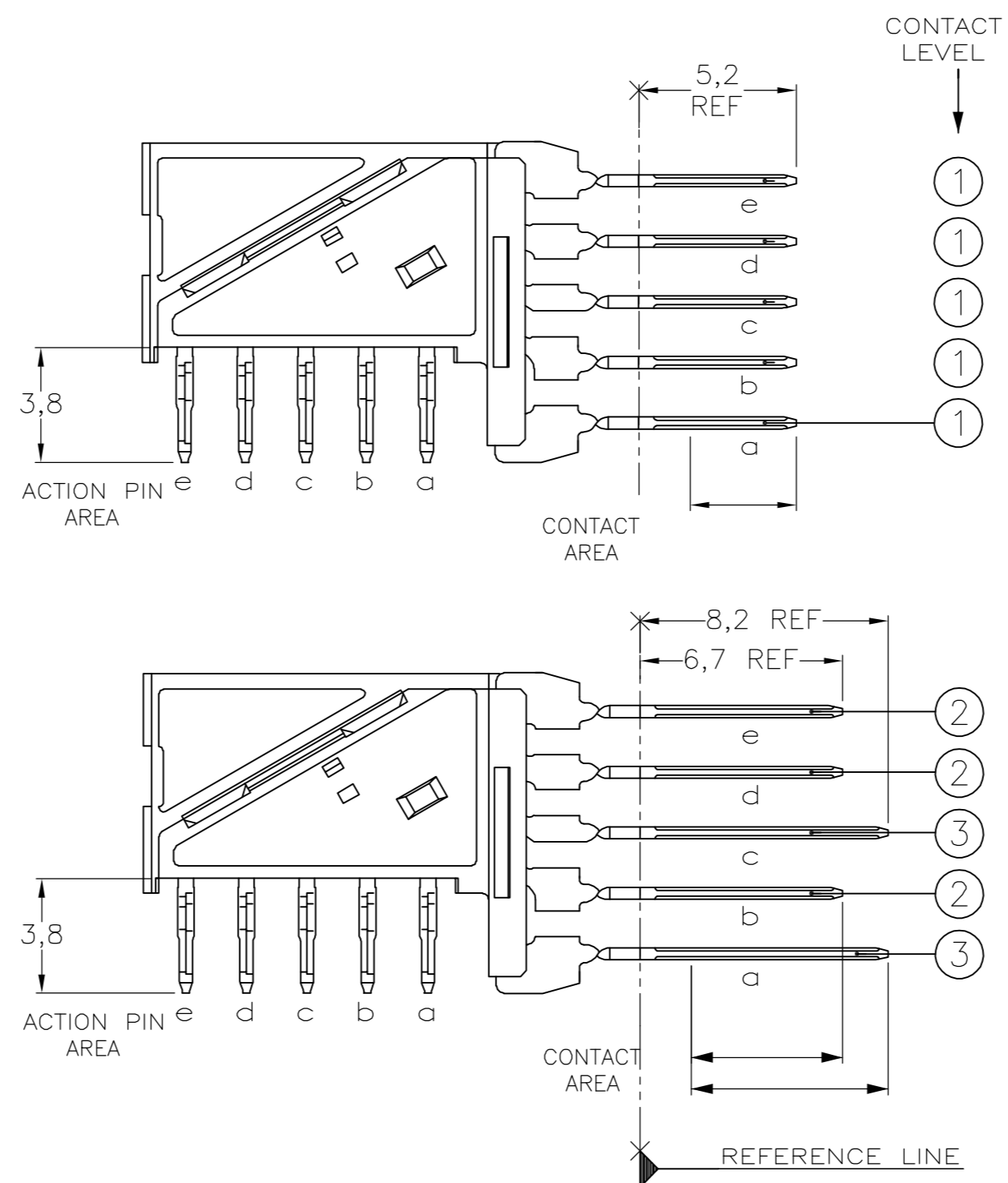
THIS DRAWING IS UNPUBLISHED. RELEASED FOR PUBLICATION  
 © COPYRIGHT BY TYCO ELECTRONICS CORPORATION. ALL RIGHTS RESERVED.

| LOC | DIST | REVISIONS     |          |      |      |
|-----|------|---------------|----------|------|------|
| P   | LTR  | DESCRIPTION   | DATE     | DWN  | APVD |
| C   |      | EHC0-0195-04  | 06-07-04 | DvdB | BM   |
| D   |      | EH10-0680-05  | 06-06-05 | BSV  | BM   |
| D1  |      | ECR-06-002635 | 07-02-06 | BSV  | BM   |

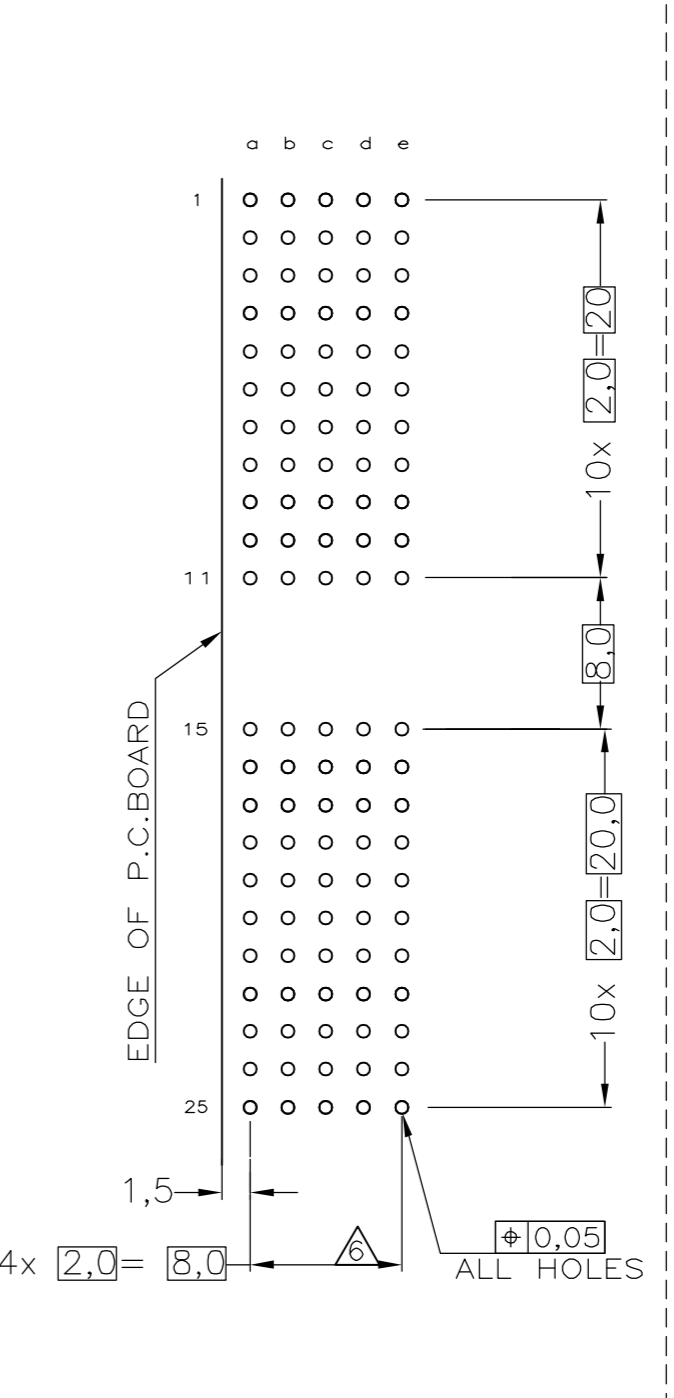
CONNECTOR ASSEMBLY  
EXEMPLARY LOADED



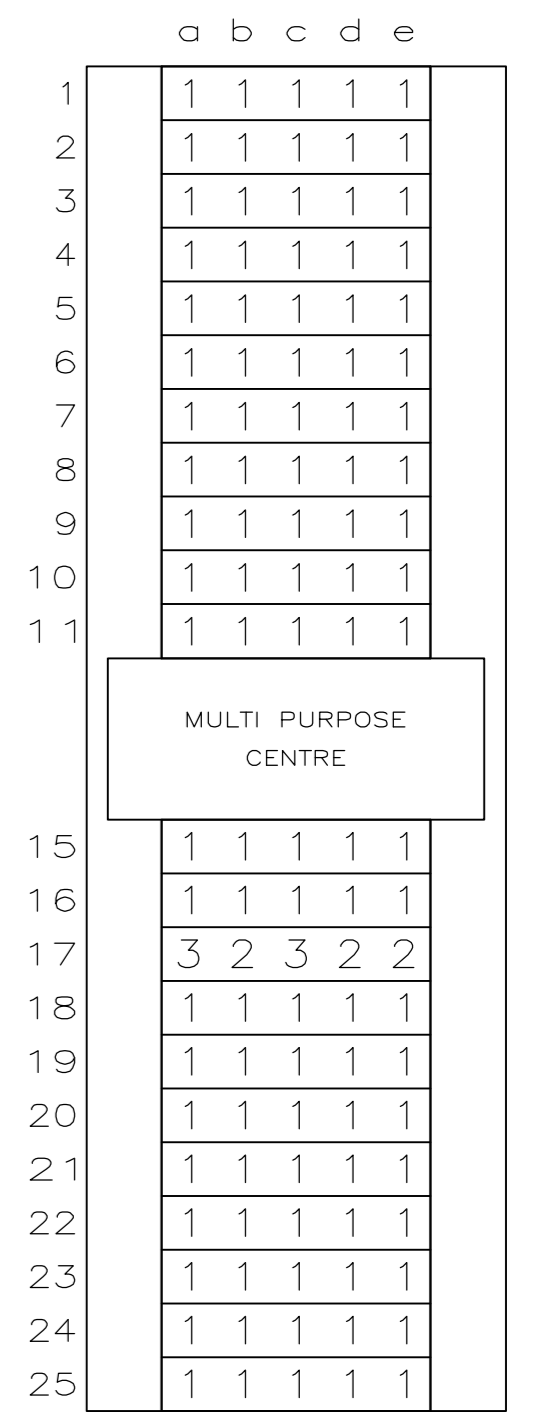
CONTACT DIMENSIONS



RECOMMENDED PCB-HOLE LAY-OUT  
COMPONENT SIDE SHOWN



CONTACT LAYOUT



P.C.B. HOLE DIM. ACTION PIN  
FOR DETAILS SEE  
APPLICATION SPECIFICATION

- NOTES:
- △ MATERIAL HOUSING : GREY GLASSFILLED POLYESTER  
UL-RATING V0
  - △ CONTACT : PHOSPHORBRONZE
  - △ GENERAL PLATING SPECIFICATION: UNDERPLATING (ENTIRE CONTACT):  
1,27µm NICKEL MIN. AND ACTION PIN: 0,5µm TIN-LEAD MIN.  
FOR PLATING OF MATING SURFACES SEE APPLICABLE SPECIFICATION  
REFERENCE FOR EACH DASH NUMBER.
  - △ CONFORMS TO ALL TESTING ACCORDING IEC 61076-4-101  
PERFORMANCE LEVEL 2.
  - △ CONNECTOR ASSEMBLY WITH LATCH HINGE FOR CABLE CONNECTOR.
  - △ CONNECTOR PRINTED WITH PARTNUMBER AND DATECODE
  - △ PLATED-THROUGH HOLES AT 2x2mm SQUARE GRID.
  - △ AREA FOR KEYING PART (BASIC PART NUMBER 100525).

|        |          |              |
|--------|----------|--------------|
| △△     | △        | 1-188395-1 △ |
| △△     | △        | 188395-1     |
| FINISH | MATERIAL | PARTNUMBER   |

|  |  |                              |   |                 |
|--|--|------------------------------|---|-----------------|
| THIS DRAWING IS A CONTROLLED DOCUMENT. |  | DWN 15DEC97<br>L.v.d.HEIJDEN | Tyco Electronics Corporation<br>s-Hertogenbosch, Netherlands, |                 |
| DIMENSIONS: MM                         |  | CHK 15DEC97<br>D. TRUREN     |   |                 |
| TOLERANCES UNLESS OTHERWISE SPECIFIED: |  | APVD -<br>F.v.KONINGSBRUGGE  | NAME  |                 |
| 0 PLC ± -                              |  | PRODUCT SPEC                 | Z-PACK 2MM HM TYPE A  |                 |
| 1 PLC ± -                              |  | APPLICATION SPEC             | 110 POS. RIGHT ANGLE MALE                                     |                 |
| 2 PLC ± -                              |  | 114-19029                    | CONNECTOR ASSEMBLY  |                 |
| 3 PLC ± -                              |  | WEIGHT -                     | SIZE A2   | CAGE CODE 00779 |
| 4 PLC ± -                              |  | CUSTOMER DRAWING             | DRAWING NO. C=188395  | RESTRICTED TO - |
| ANGLES ± -                             |  |                              | SCALE NTS   | SHEET 1 OF 1    |
| FINISH -                               |  |                              | REV D1  |                 |

单击下面可查看定价，库存，交付和生命周期等信息

[>>TE Connectivity\(泰科\)](#)