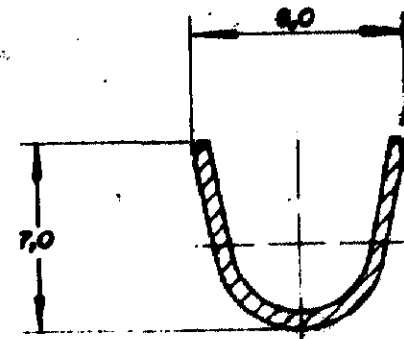
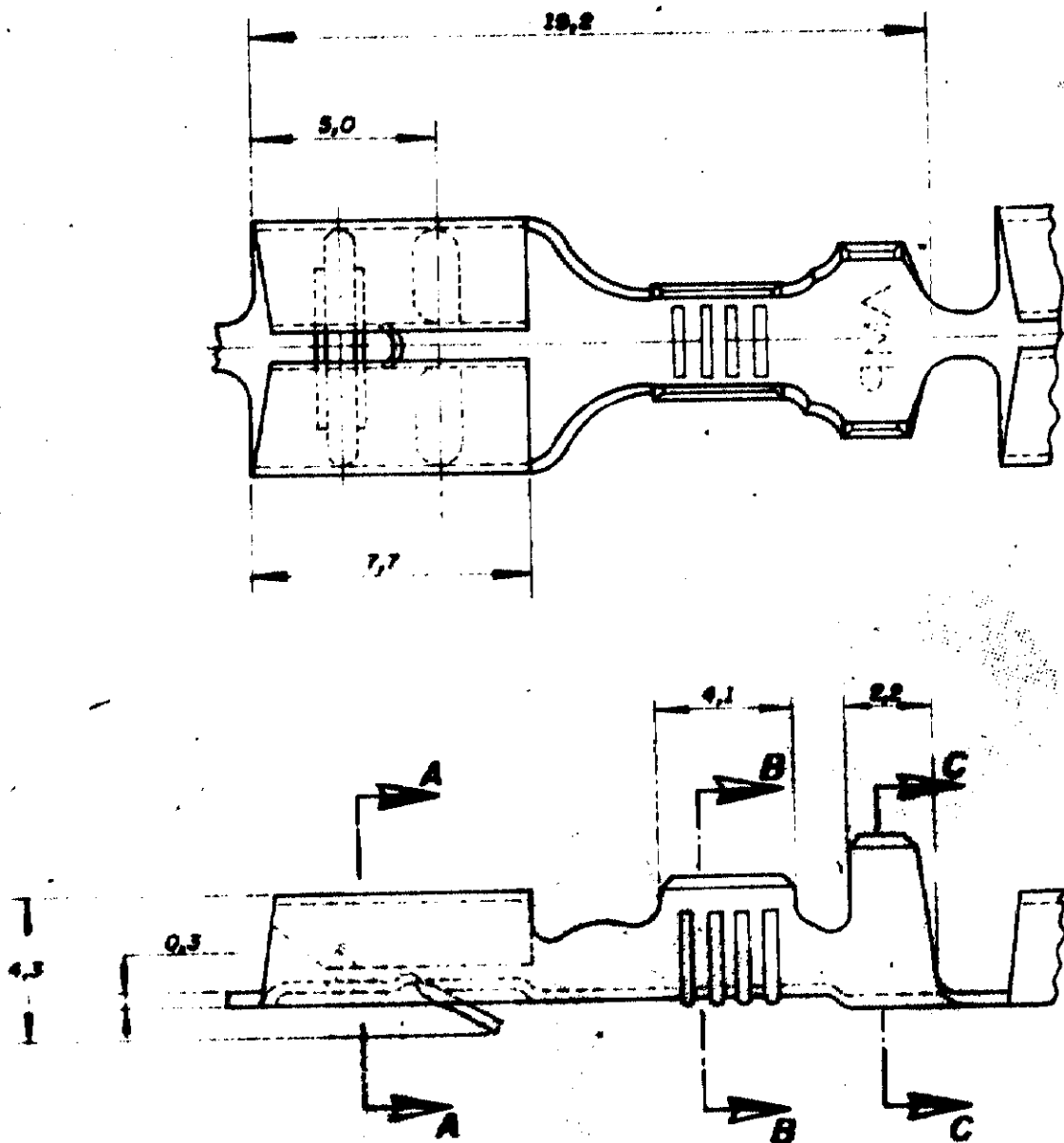


C 626 096

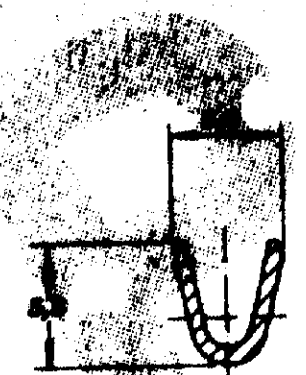
DO NOT SCALE
DIMENSIONS IN

METRIC

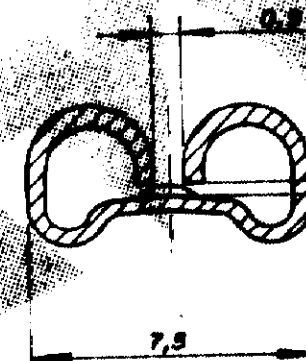
3rd ANGLE PROJECTION



SECCÃO-C/C



SECCÃO-B/B



SECCÃO-A/A

PARA LÂMINHAS
DE 0,3 DE ESPESURA

1
OBSOLETE

1 OBSOLETE PARTS: OBSOLETE CIS STREAMLINING PER D.RENAUD/D.SINISI

OTHER TREATMENT	FINISH	MATERIAL	PART NUMBER
	PRATEADO	BRONZE FOSFOROSO	
	ESTANHADO	LATÃO	
	//	BRONZE FOSFOROSO	
	ESTANHADO	LATÃO	626 096
	//	LATÃO	-1

CUSTOMER DWG for REFERENCE ONLY				THIS DRAWING IS UNPUBLISHED UNLESS FOR PUBLICATION		
TOLERANCES UNLESS OTHERWISE STATED				COPYRIGHT © BY AMP DO BRASIL LTDA S.P. ALL INTERNATIONAL RIGHTS RESERVED AND PRODUCTS NOT BEING SOLD IN THE UNITED STATES		
DEC. ± 0,3				INS. DIA. RANGE 3.15-8.00mm		SCALE //
ANGLES ± 1°				WIRE RANGE 3.3-6.0mm		
DE PAULO S.B. 23-9-87				AMP AMP do BRASIL LTDA. São Paulo, Brasil		
G1 REV PER ECO-09-026444 KK AEG 27NOV09				DESCRIPTION .250 SERIES FAST-IN-ON RECEPTACLE		
G REATIVADO - 4 DON 0-00-00				A3		
F REVISADO PF 23.9.88 DE				C 626 096		
E REDESENHADO P.S.B. 23-9-87				SHEET 08/01		
REVISION RECORD DR CHK DATE APP.						

单击下面可查看定价，库存，交付和生命周期等信息

[>>TE Connectivity\(泰科\)](#)