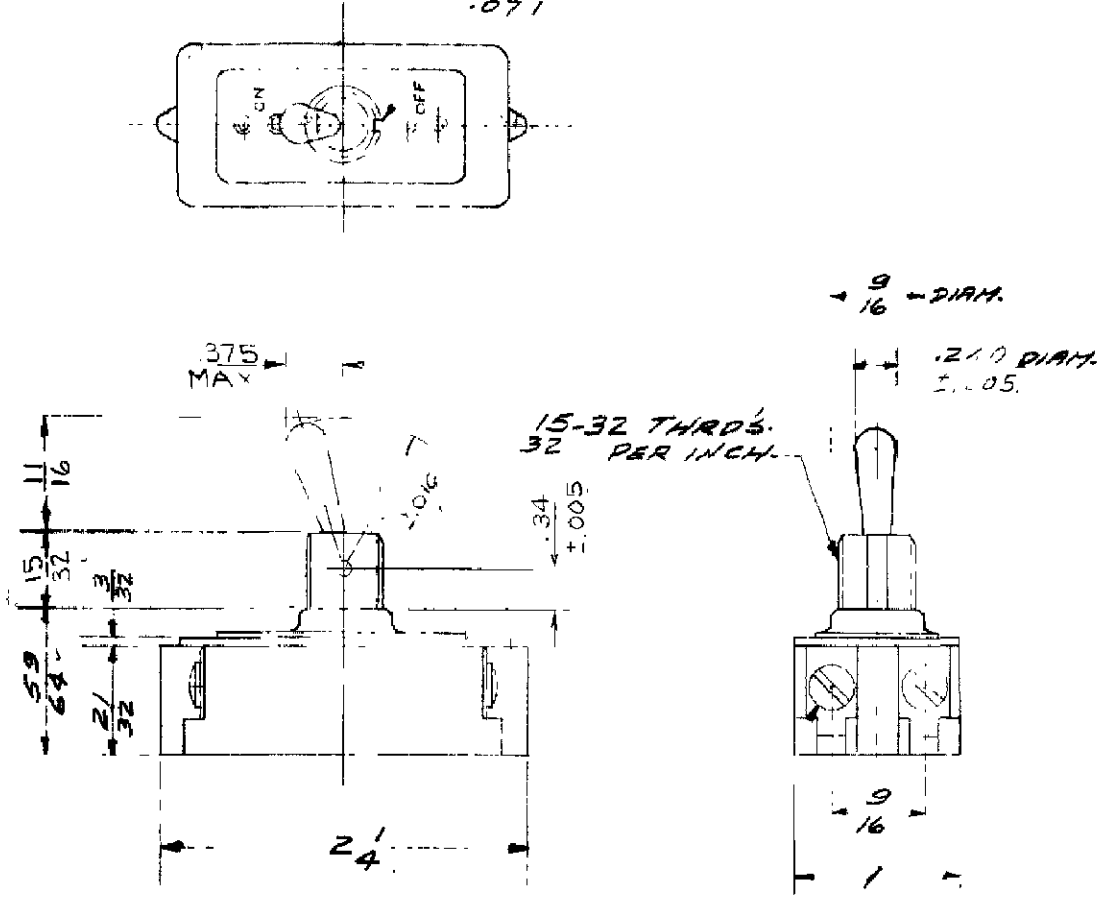


A 90-3144

RAW MAT. SPEC. WITH  
PART NO. AND AMOUNT REQ'D.


.068 X .035 DEEP KEYWAY.  
.071



A-#6-32 BINDING—  
HEAD SCREWS 1/4" LONG

BULLETIN  
**DIMENSIONS FOR 10 AMP. 250 V. ONE HOLE MTG. TOOL HANDLE SM.**

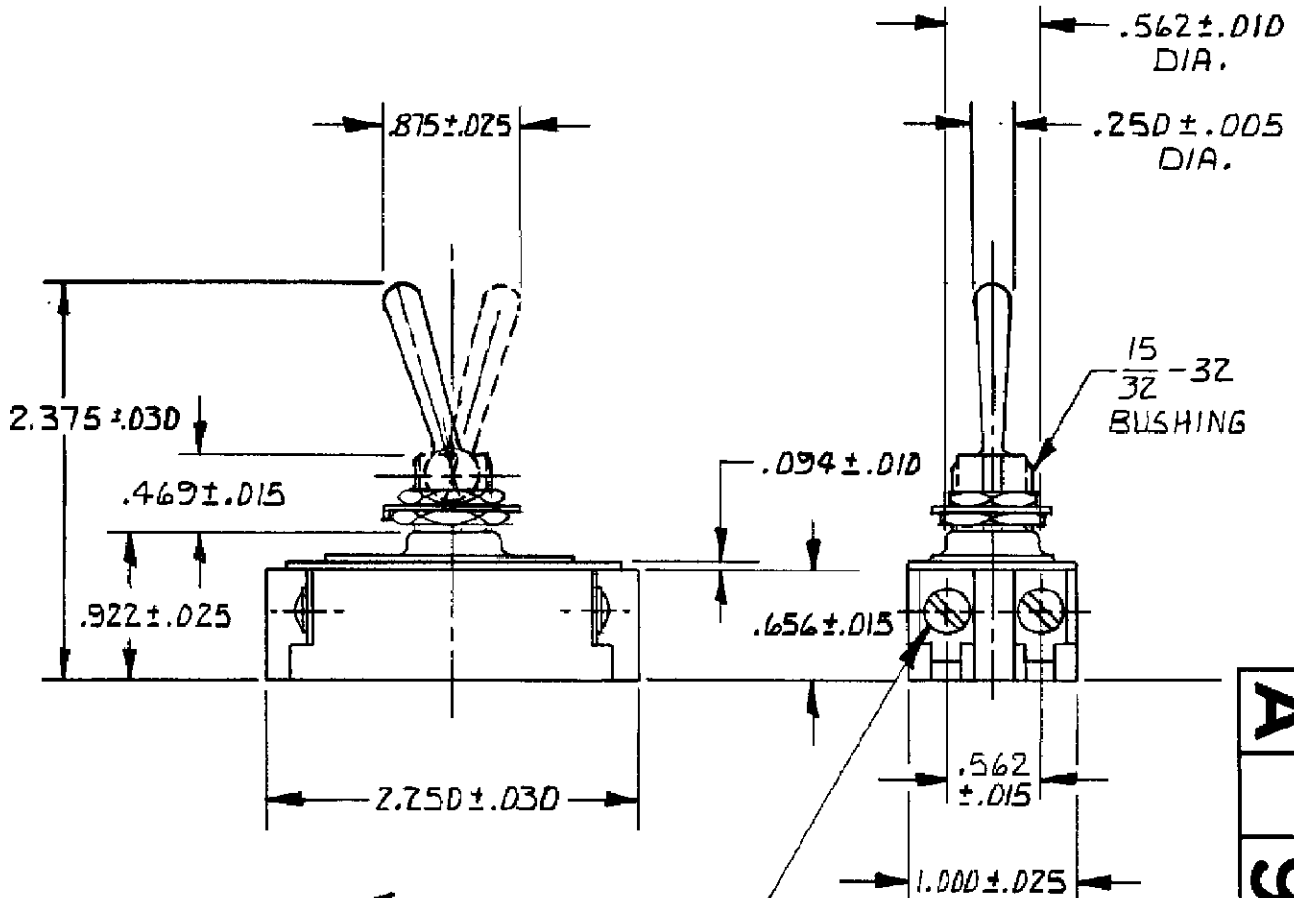
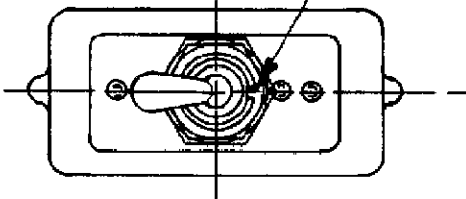
A	G.F.L.	G.G.	2-8 62	DR. R. ARTIN	3-30 -61	FIRST ASSEM. WHERE LISTED A90-3143
B				CHK. L. SOTO 2/31/61		SUP. S. NON-INTERCHANGEABLE
C				APPROV. J.E. BURGESS 4/27		SUP. D BY NON-INTERCHANGEABLE
D				DO NOT SCALE DRAWING. WORK ACCORDING TO DIMENSIONS.		SURFACE COATING
E				STANDARD TOLERANCES 50-275 APPLY TO DIMENSIONS FOR WHICH TOLERANCES ARE NOT SPECIFIED.		SCALE 1" = 1"
F				ORDER NO.		

CUTLER-HAMMER, INC. MILWAUKEE  NEW YORK 8 53 LI 57A **A 90-3144**

NOTES:

1. SCREWS, WASHER AND HEX NUTS SHIPPED UNASSEMBLED.

$.072^{+.003}_{-.004} \times .035$  DEEP KEYWAY



15  
32 - 32  
BUSHING

#6 - 32 BINDING  
HEAD SCREWS  
.250 LONG  
QUANTITY OF 4



TITLE DIMENSIONS FOR 10-20A TOGGLE WITH LEVER SEAL

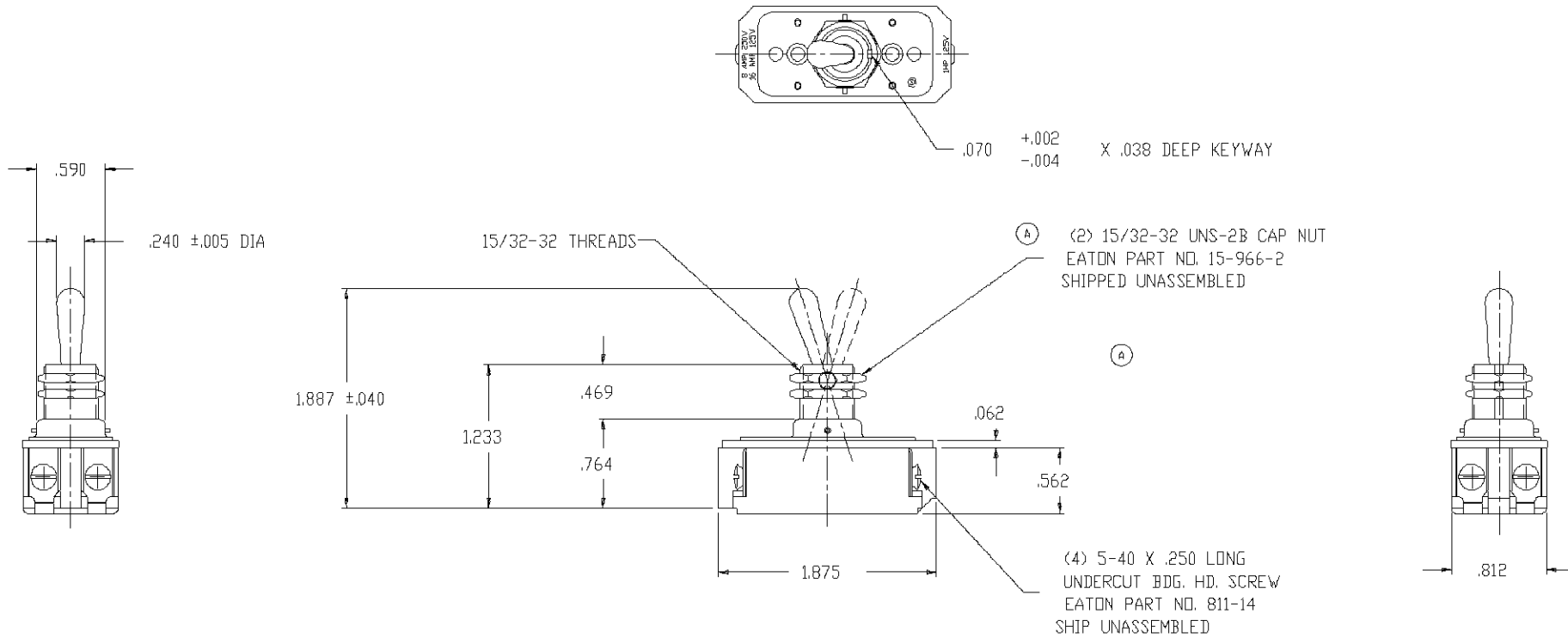
ORDER NO. 910DN 76

BASIC SPECS. SUMMARY

A		DR. G. STORY	12/1/84	APP. <i>[Signature]</i> 12/1/84
B		CHK. <i>C. Mardine</i>	12/1/84	FIRST ASSEM. WHERE LISTED
C		Cutler-Hammer F.T.N. Electrical / Electronic Control		

A 90-12054

FORM 80B



NOTE:

- 1. UNLESS OTHERWISE SPECIFIED ALL TOLERANCES TO BE  $\pm .016$ .



TITLE: DIM DWG FOR 8910K223			
DR. W. HANSON	2/1/92	SURFACE COATING	FIRST ASSEM WHERE LISTED 8910K223
CHK. W. LEONARD	2/3/92	SCALE	SUP'S
APP. M.R. DUMMER	2/3/92	DO NOT SCALE DRAWING	SUP'D BY

ORDER NO. 93719990		6/29/94	D				
A	REMOVED 15-192 NUT NOTE. ADDED "(2)" TO 15-966-2 NUT NOTE.	93719990	E				
B			F				
C							

单击下面可查看定价，库存，交付和生命周期等信息

[>>TE Connectivity\(泰科\)](#)