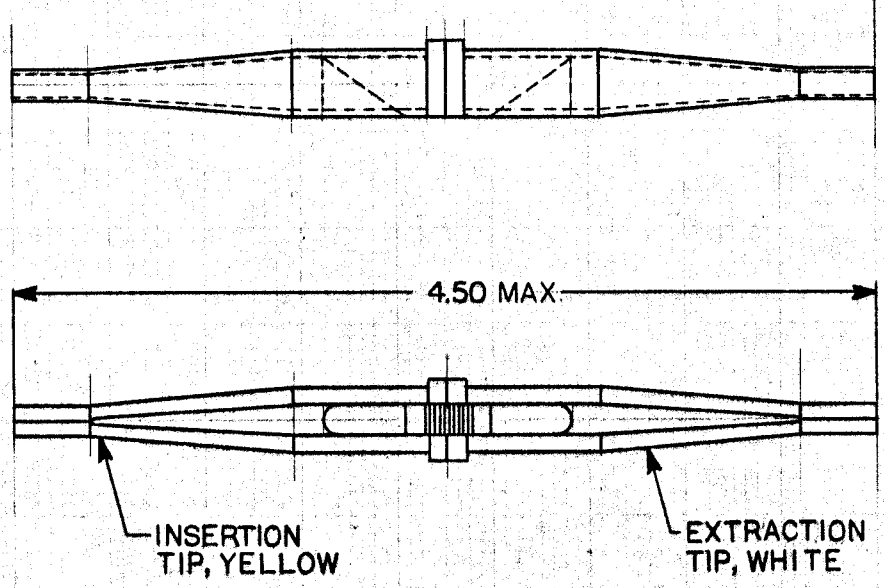


REVISIONS				
ZONE	LTR	DESCRIPTION	DATE	APPROVED
-	A	RELEASED TO MFG	4/24/77	12hr



NOTES:

1. THIS DOUBLE ENDED TOOL IS USED TO INSERT AND REMOVE ELECTRICAL CONTACTS FROM CONNECTOR BLOCKS. REFERENCE (MS3447-12)

SPECIFICATION CONTROL DRAWING

ITEM	QTY	PART NUMBER	DWG OR SPEC	DESCRIPTION
PARTS LIST				
UNLESS OTHERWISE SPECIFIED DIMENSIONS ARE IN INCHES AND TOLERANCES ARE: .XXX : ± .005 .XX : ± .002 .X : ± .001				DRAWN J BITTER 12-6-76 CHECKED R. Mottled 4/24/77 APPROVED WTZ 2-15-77
MATERIAL				APPROVED
FINISH				APPROVED
DO NOT SCALE THIS DRAWING		AD-1527	FINISH	PART NUMBER 993965
APPLICATION		NEXT ASSY	USED ON	PROJECT AD-1527
THIS DRAWING AND THE INFORMATION SET FORTH HEREON ARE THE PROPERTY OF RAYCHEM CORPORATION, AND ARE TO BE HELD IN TRUST AND CONFIDENCE. PUBLICATION, DUPLICATION, DISCLOSURE, OR USE FOR ANY PURPOSE NOT EXPRESSLY AUTHORIZED IN WRITING BY RAYCHEM CORPORATION IS PROHIBITED.		RAYCHEM		RAYCHEM CORPORATION 305 CONSTITUTION DRIVE MENLO PARK, CALIFORNIA 94025
TITLE		AD-1527 CONTACT INSERTION & EXTRACTION TOOL (FOR #12 SOLDER TACT)		
SCALE NONE		SIZE C	CODE IDENT. NO 06000	DWG NO. AD-1527-5
WEIGHT		SHEET		OF

If this document is printed it becomes uncontrolled. Check with the web for latest revision.

单击下面可查看定价，库存，交付和生命周期等信息

[>>TE Connectivity\(泰科\)](#)