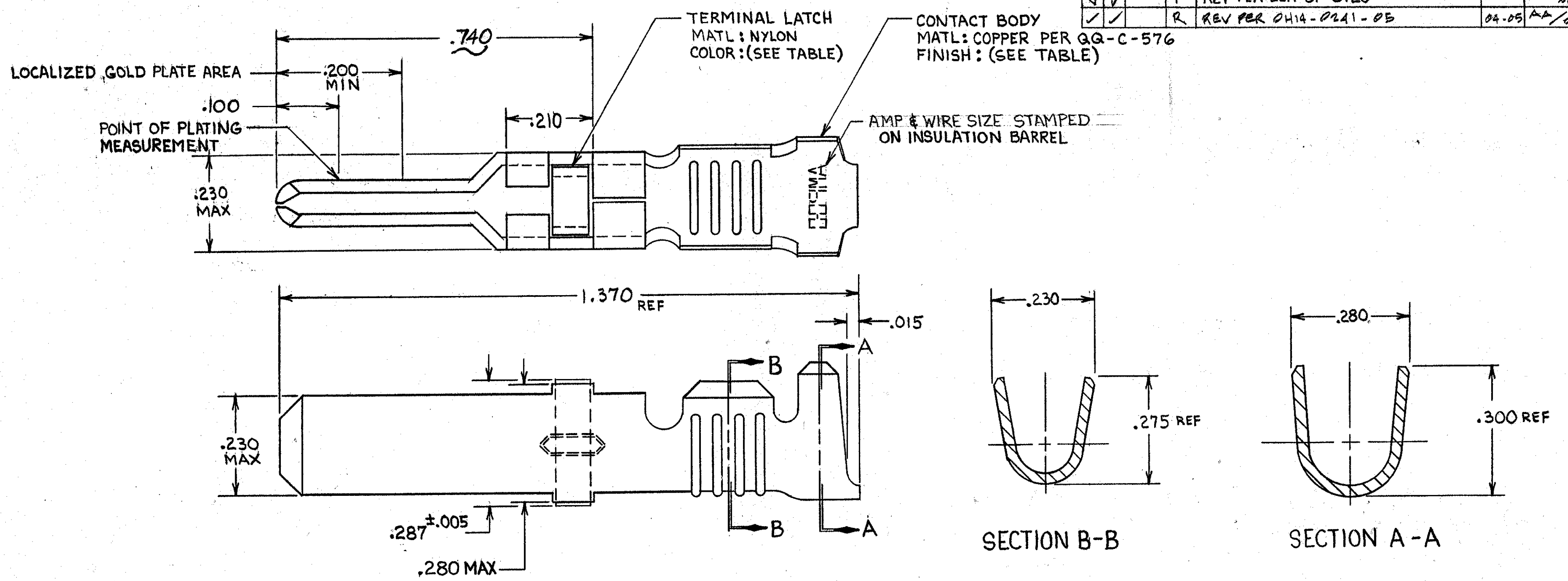


THIS DRAWING IS UNPUBLISHED; RELEASED FOR PUBLICATION
 © COPYRIGHT 19 BY AMP INCORPORATED, HARRISBURG, PA. ALL INTERNATIONAL RIGHTS RESERVED. AMP PRODUCTS MAY BE COVERED BY U.S. AND FOREIGN PATENTS AND/OR PATENTS PENDING.

REVISIONS					
P	F	ZONE	LTR	DESCRIPTION	DATE APPROVED
✓	✓		L	REDRAWN & REVISED PER ECN R-1451	7-30-85
✓	✓		M	REV. ECN R-1946	3-4-86
✓	✓		N	OBSOLETE -3 PER R-2760	3-4-87
✓	✓		P	REV PER ECN DF-5920	11-25-88
✓	✓		R	REV PER 0H14-0241-05	04-05



- ▲ REELED FOR USE WITH STANDARD APPLICATORS.
- ▲ PLATED WITH .000100 MIN SILVER PER QQ-S-365.
- ▲ PLATED WITH .000015 MIN GOLD PER MIL-G-45204 IN THE LOCALIZED GOLD PLATE AREA, GOLD FLASH ON THE REMAINDER, OVER .000030 MIN NICKEL PER QQ-N-290.
- ▲ PLATED WITH .000030 MIN GOLD PER MIL-G-45204 IN THE LOCALIZED GOLD PLATE AREA, GOLD FLASH ON THE REMAINDER, OVER .000030 MIN NICKEL PER QQ-N-290.
- ▲ PLATED WITH .000050 MIN 93-7% TIN-LEAD ALLOY OVER .000030 MIN NICKEL PER QQ-N-290.
- 6. WIRE RANGE = 10 AWG.
- 7. INSULATION RANGE = .190 - .220 DIA.
- ▲ PLATED WITH .000050 MIN TIN PER ASTM-B-545 OVER .000030 MIN NICKEL PER QQ-N-290.

BLACK	▲	66254-6	▲	66260-5
NATURAL	▲	66254-4	▲	66260-4
BLACK	▲	66254-3	▲	66260-3
BLACK	▲	66254-2	▲	66260-2
BLACK	▲	66254-1	▲	66260-1
TERMINAL LATCH COLOR	FINISH	STRIP ASS'Y P/N REF	LOOSE PIECE P/N ASS'Y	

UNLESS OTHERWISE SPECIFIED DIMENSIONS ARE IN INCHES. TOLERANCES ON: DECIMALS ±.010 ANGLES ±.010	CONTRACT NO	AMP AMP INCORPORATED Harrisburg, Pa. 17105		
	DR <i>Rich Rohrbach</i> 9-27-85			NAME
MATERIAL SEE CALLOUT	CHK <i>Larry J. Lawner</i> 10-25-85	MALE TYPE XII GROUND CONTACT LOOSE PIECE ASS'Y		
FINISH SEE DASH NO	APPD <i>Ed. Bolach</i> 10-25-85			
	DSGN APPD	SIZE	FSCM NO	DRAWING NO
	OTHER APPD	C	00779	66260
		SCALE	NTS	SHEET

单击下面可查看定价，库存，交付和生命周期等信息

[>>TE Connectivity\(泰科\)](#)