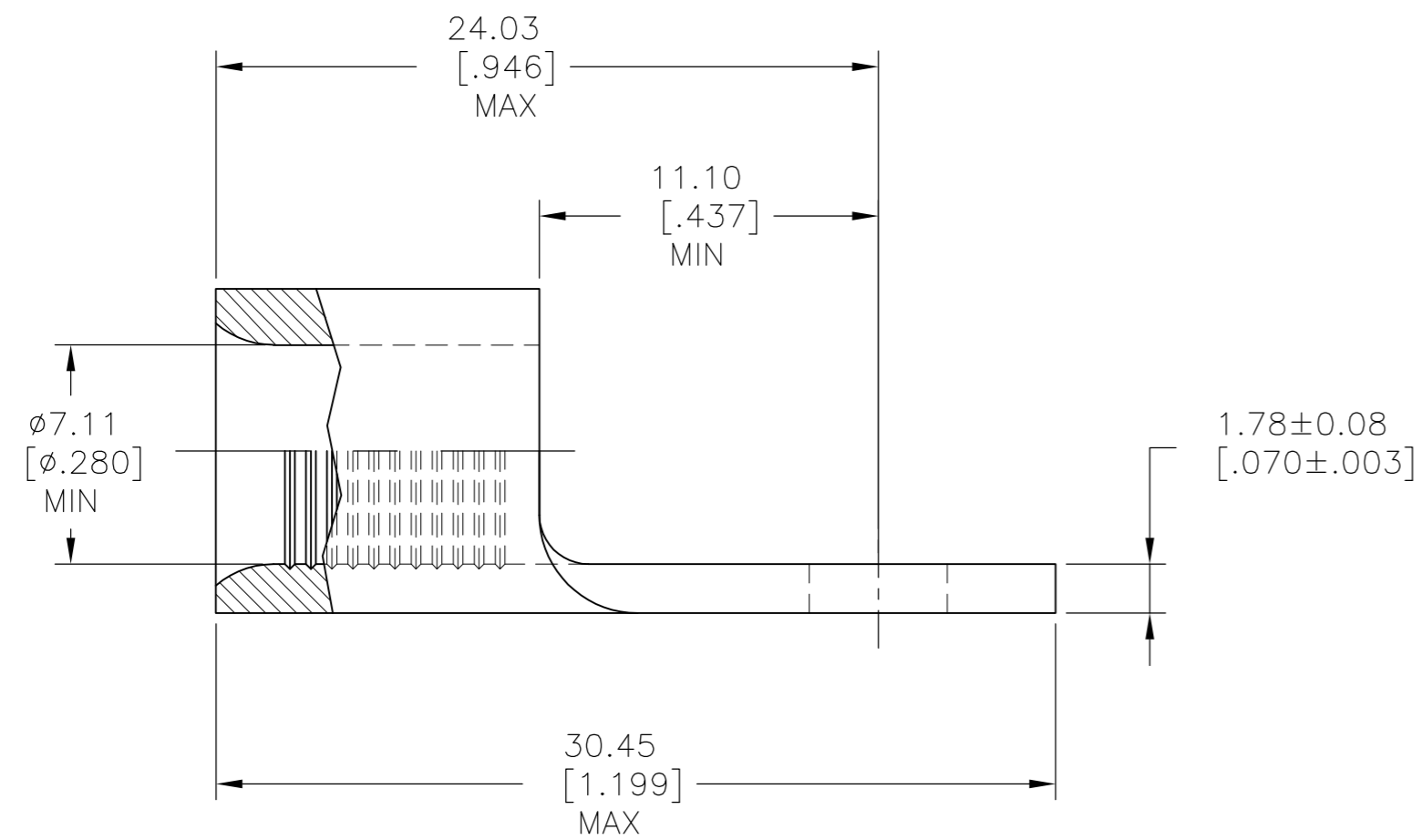
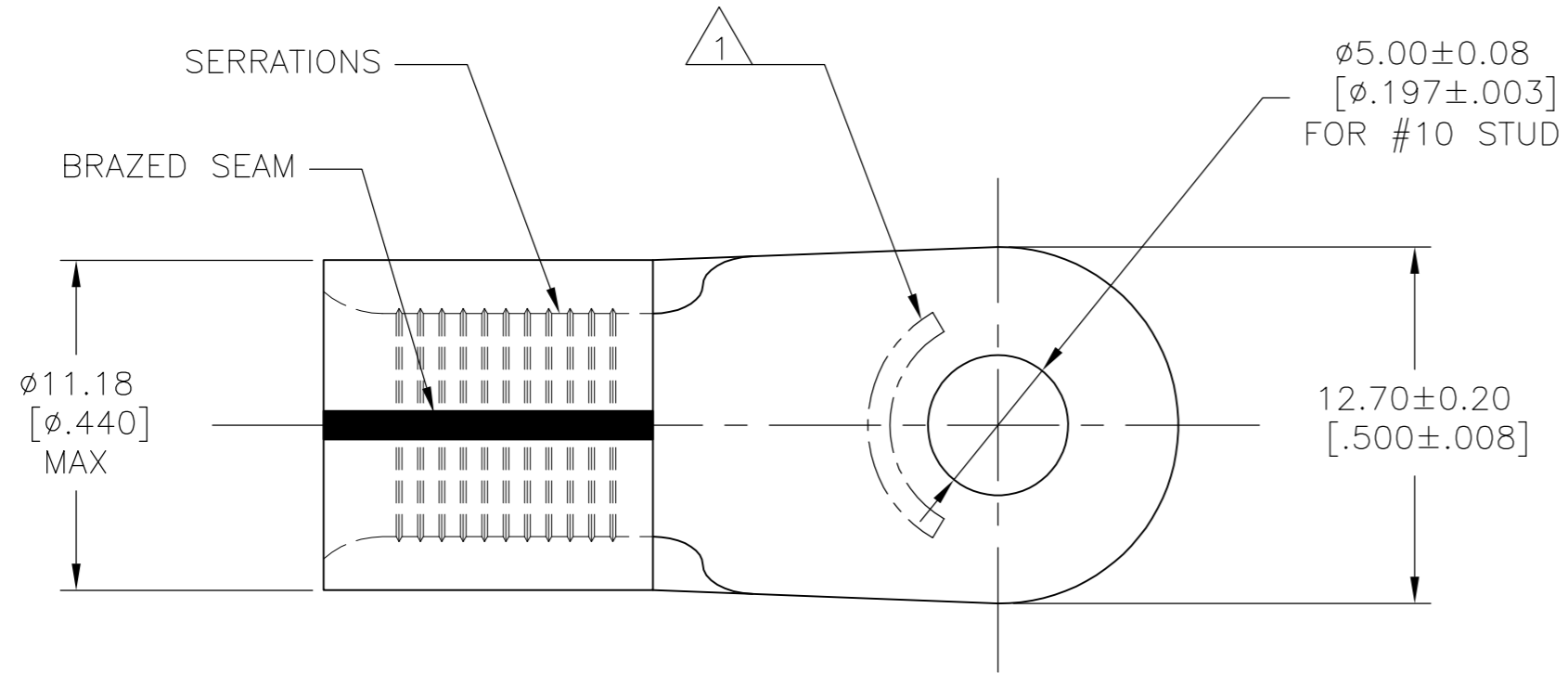


THIS DRAWING IS UNPUBLISHED. RELEASED FOR PUBLICATION  
 © COPYRIGHT - By - ALL RIGHTS RESERVED.

REVISIONS				
P	LTR	DESCRIPTION	DATE	APVD
F1		REVISED PER ECO-16-015238	25OCT2016	RS DR



<b>AMP</b> WIRE RANGE	E13288 Listed
4 AWG SOLID OR STRANDED	4 AWG STRANDED P/N'S 33114 & 2-33114-1 ONLY
LR7189 Certified	MILITARY P/N AND CLASS
4 AWG SOLID OR STRANDED P/N'S 33114 & 2-33114-1 ONLY	MS 20659-144 CLASS 2 P/N 33114 ONLY

- 1 STAMP AMP 4W\* APPROX AS SHOWN.
- 2 TIN PLATE 0.00254[.000100] MIN THK PER ASTM B545.
- 3 NICKEL PLATE 0.00762[.000300] MIN THK PER SAE AMS QQ-N-290.

OBsolete	322	LOOSE PIECE, TRAY	2	170°C[338°F] MAX	<del>2-33114-1</del>
PRELIMINARY	100	LOOSE PIECE	3	343°C[650°F] MAX	33114-1
	100	LOOSE PIECE	2	170°C[338°F] MAX	33114
	QTY	PACKAGE TYPE	FINISH	MAX OPERATING TEMPERATURE	PART NUMBER

<b>AMP INCORPORATED</b> CUSTOMER SERVICE SYSTEMS		MAX RECOMMENDED OPERATING TEMPERATURE: SEE TABLE
FOR ADDITIONAL PRODUCT INFORMATION OR COPIES OF DRAWINGS AND TECHNICAL DOCUMENTS	PRODUCT INFORMATION CENTER 1-800-522-6752	VOLTAGE RATING: NOT APPLICABLE
FOR APPLICATION TOOLING INFORMATION	TOOLING ASSISTANCE CENTER 1-800-722-1111	WIRE CROSS SECTIONAL AREA RANGE: 16.8-26.7mm <sup>2</sup> [33,100-52,600] CIR MILS SOLID OR STRANDED
FOR ORDER ENTRY	1-800-526-5142	THIS DRAWING IS A CONTROLLED DOCUMENT FOR AMP INCORPORATED. IT IS SUBJECT TO CHANGE AND THE CONTROLLING ENGINEERING ORGANIZATION SHOULD BE CONTACTED FOR THE LATEST REVISION.

THIS DRAWING IS A CONTROLLED DOCUMENT.		DWN TA BRINKMAN 3-29-93	TE Connectivity	
DIMENSIONS: mm [INCHES]		CHK DA PATTERSON 3-29-93	NAME DE MILLER 3-29-93	
TOLERANCES UNLESS OTHERWISE SPECIFIED:		APVD DE MILLER 3-29-93	PRODUCT SPEC	
0 PLC ± -		APPLICATION SPEC		
1 PLC ± -		WEIGHT		
2 PLC ± 0.20[.008]		SIZE A2		
3 PLC ± -		CAGE CODE 00779		
4 PLC ± -		DRAWING NO C=33114		
ANGLES ± -		RESTRICTED TO		
FINISH SEE TABLE		SCALE 4:1		
MATERIAL COPPER PER ASTM B-152 ANNEALED		SHEET 1 OF 1		
		REV F1		

单击下面可查看定价，库存，交付和生命周期等信息

[>>TE Connectivity\(泰科\)](#)