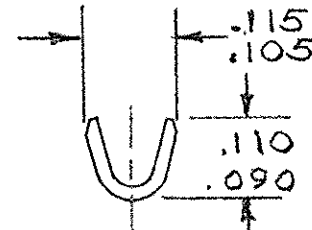
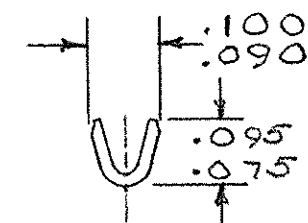
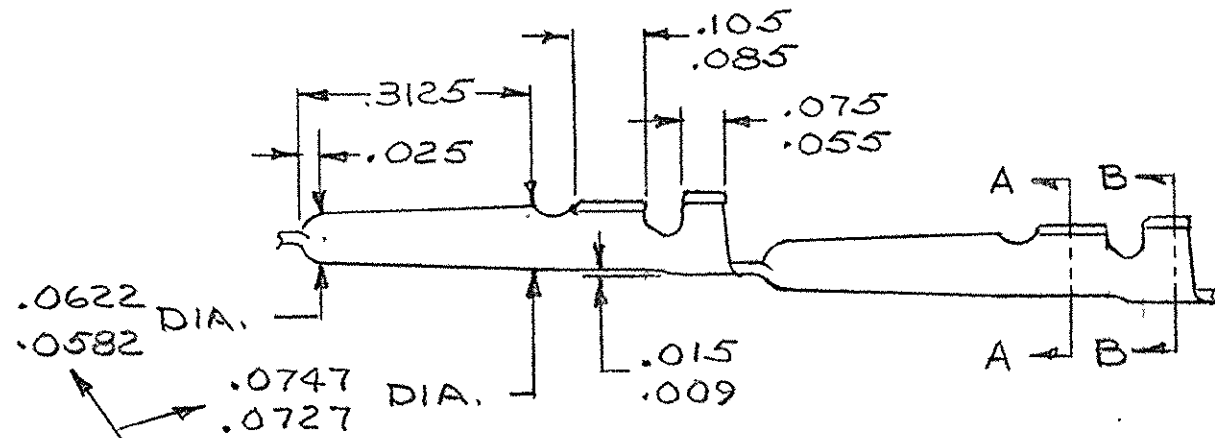
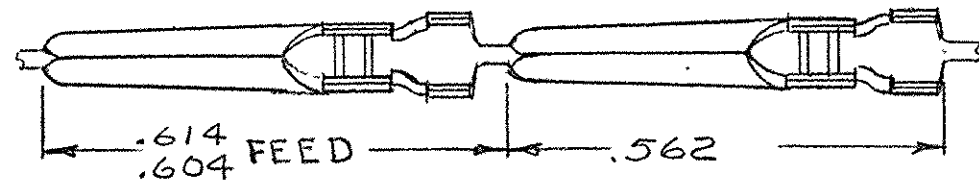


© 1962 BY AMP INCORPORATED. ALL RIGHTS RESERVED. AMP PRODUCTS COVERED BY PATENTS AND/OR PATENTS PENDING. APPROVED PER GOVT CONTRACT NO.

REVISIONS				
SYM	ZONE	DESCRIPTION	DATE	APPROVAL
D	-	REDRAWN.	U 309 11-15-62	JK
E	B.I.	REVISED CRIMP HEIGHT	L1 375 12-4-63	JK
F		REVISED	U-690 2-17-63	m.s. JK
G		REVISED	U-925 4-16-64	m.s. DS4
H		PRINT DIST WAS "39" LOC WAS "AB"	9347 10-72	CO
J	BI	ADDED TOOL NO'S AND PRODUCT SPEC. 108-9203, ECN 419	11-3-76	CFB
K		OBSOLETE 66140-3, 66141-3	EA 1049 1-11-79	DH
L		REVISED PLATING	EA 1515 8-5-80	DS
M		BRIGHT TIN-LEAD WAS BRIGHT TIN	EA 1818 6-16-81	DS
N		REVISED GOLD PLATING	EA 2139 6-17-82	DS
P		OBS 66141-2	ECN 53379 11-19-86	RS
R		OBS 66140-2	ECN 53940 4-24-87	RS
S		OBS 66141-4	ECN DF-0521 T.W. 9-26-88	JK
T		REVISED PER OH14-0139-05	1-26-06	PY RG



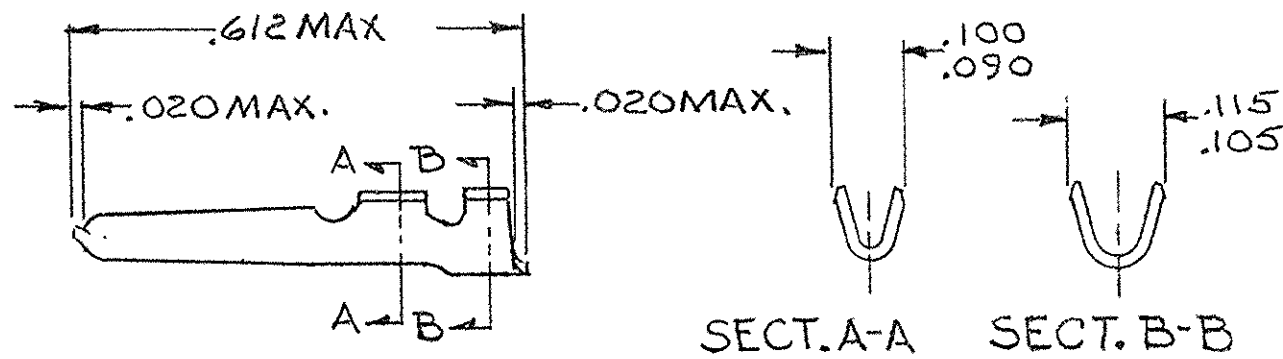
SECT. A-A

SECT. B-B

OUT OF ROUND NOT TO EXCEED TOLERANCE ON DIMENSIONS.

STRIP

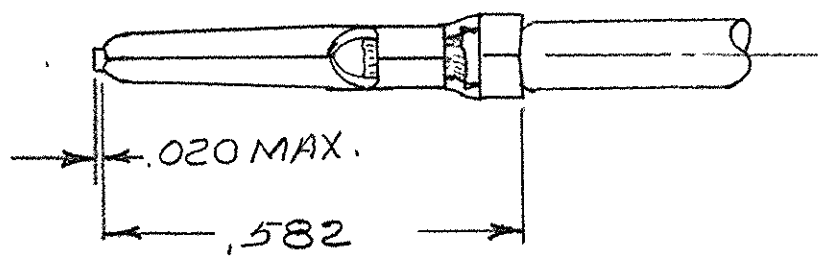
1. FOR ADDITIONAL SPECIFICATIONS SEE AMP PRODUCT SPEC. 108-9203.
 2. OBSOLETE PART NO.



SECT. A-A

SECT. B-B

LOOSE PIECE



CRIMPED VERSION.

STRIP PART NO.	LOOSE PIECE PART NO.	WIRE GAGE RANGE	INSULATION DIA RANGE	PLATING	INSERTION TOOL	HAND TOOL	CRIMP HEIGHT
5-66140-1	5-66141-1	24-20	.048-.071	.0001 MATTE TIN OVER NICKEL	811034-2	90119	.040
66140-4	2 66141-4	24-20	.048-.071	.00003 GOLD OVER .00005 NICKEL	811034-2	90119	.040
2 66140-3	2 66141-3	24-20	.048-.071	.0002 SILVER	811034-2	90119	.040
2 66140-2	2 66141-2	24-20	.048-.071	NONE	811034-2	90119	.040
66140-1	66141-1	24-20	.048-.071	.0001 BRIGHT TIN-LEAD OVER NICKEL	811034-2	90119	.040

AMP INFO		QTY REQD	NOMENCLATURE OR DESCRIPTION	PART OR IDENTIFYING NO
M 3	LOC DF			
LIST OF MATERIALS OR PARTS LIST				
UNLESS OTHERWISE SPECIFIED DIMENSIONS ARE IN INCHES TOLERANCES ON		SIGNATURE		DATE
FRACTIONS	DECIMALS	J. Kamb...		11-15-63
±	± .010	S. Kamb...		11-18-63
MATERIAL		DSGN ENGR		DATE
.016 COML. BRASS		S. Kamb...		11-19-63
HEAT TREAT		APPD		DATE
--		S. Kamb...		11-20-63
FINISH		DSGN APPD		
SEE TABLE		OTHER APPD		
AMP INCORPORATED HARRISBURG, PENNSYLVANIA		NAME		
		PIN, TAPER, INSULATION SUPPORT		
		61 SERIES, FORMED		
CODE IDENT NO		SIZE	NUMBER	
00779		C	66140	
SCALE 4:1		WT	CALC	ACTUAL
		SHEET		OF

单击下面可查看定价，库存，交付和生命周期等信息

[>>TE Connectivity\(泰科\)](#)