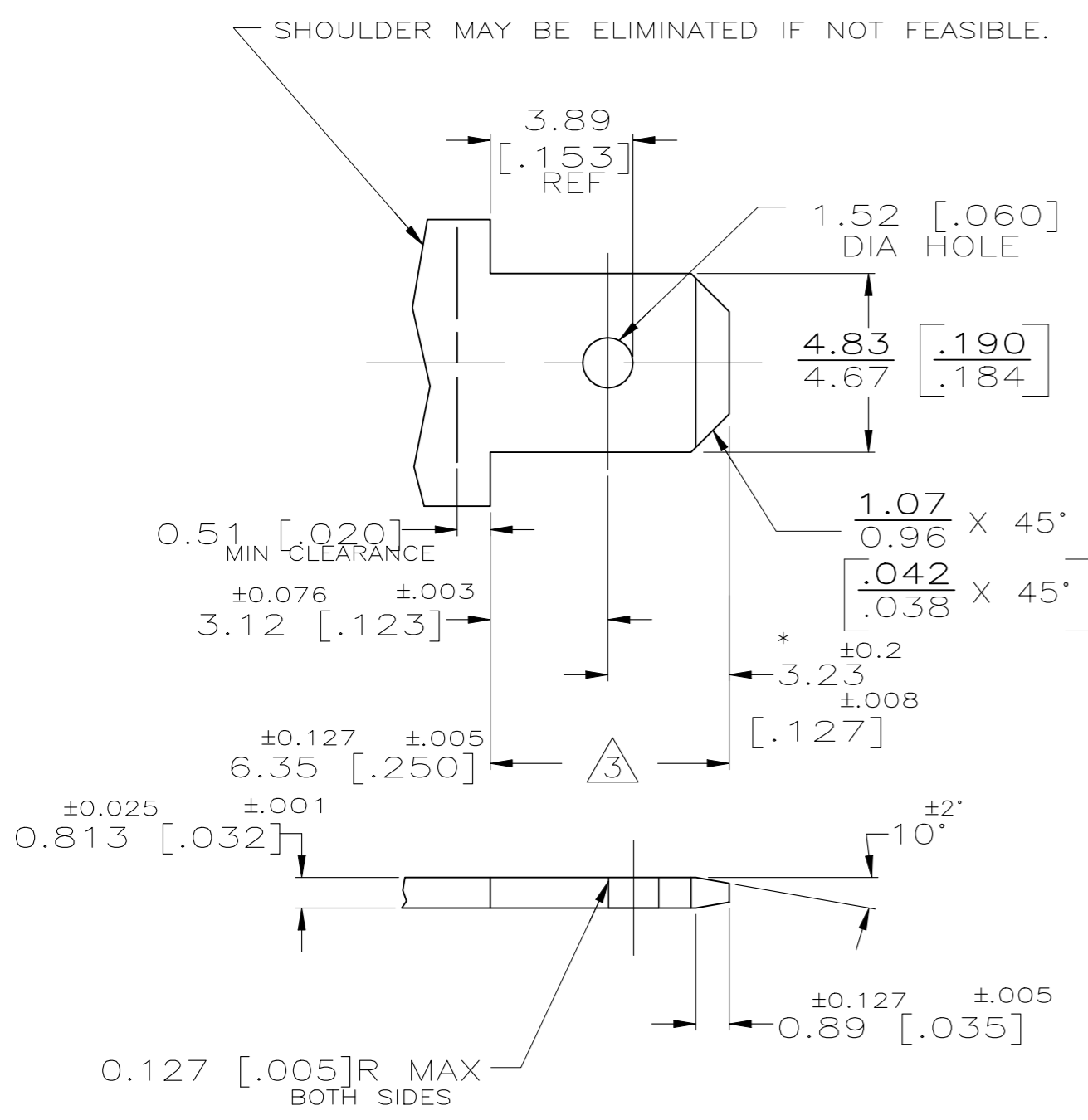
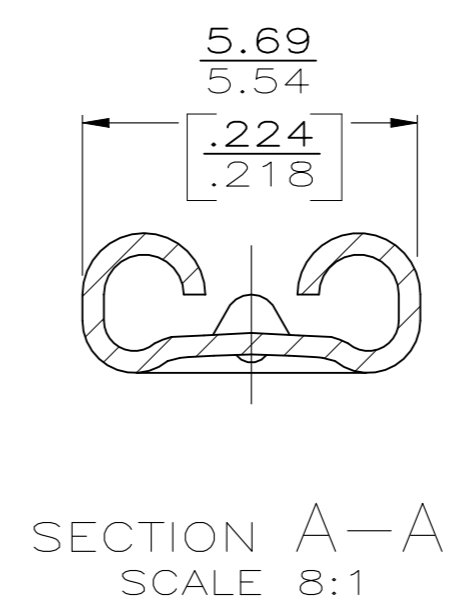
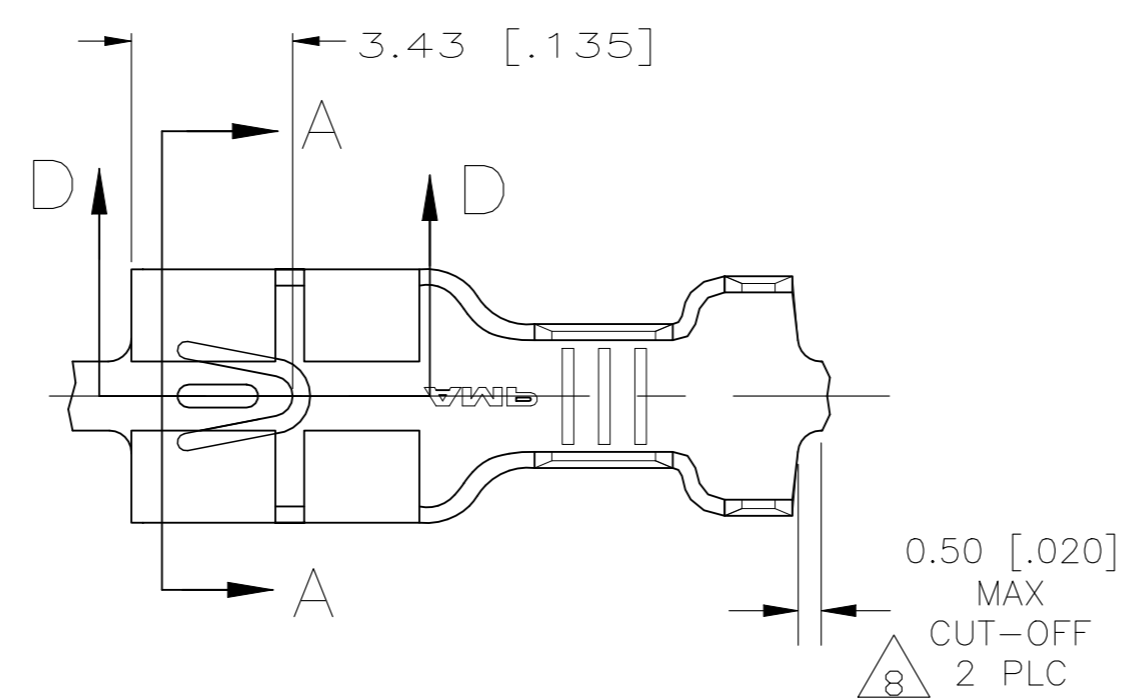


REVISIONS					
P	LTR	DESCRIPTION	DATE	DWN	APVD
M8		REVISED PER ECR-19-018140	23DEC2020	SS	EW

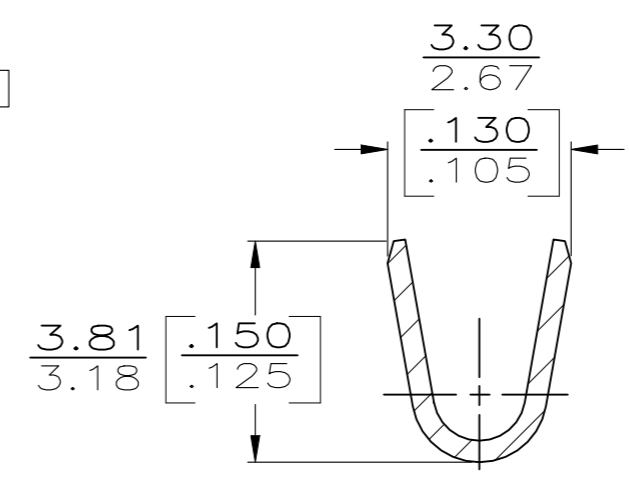
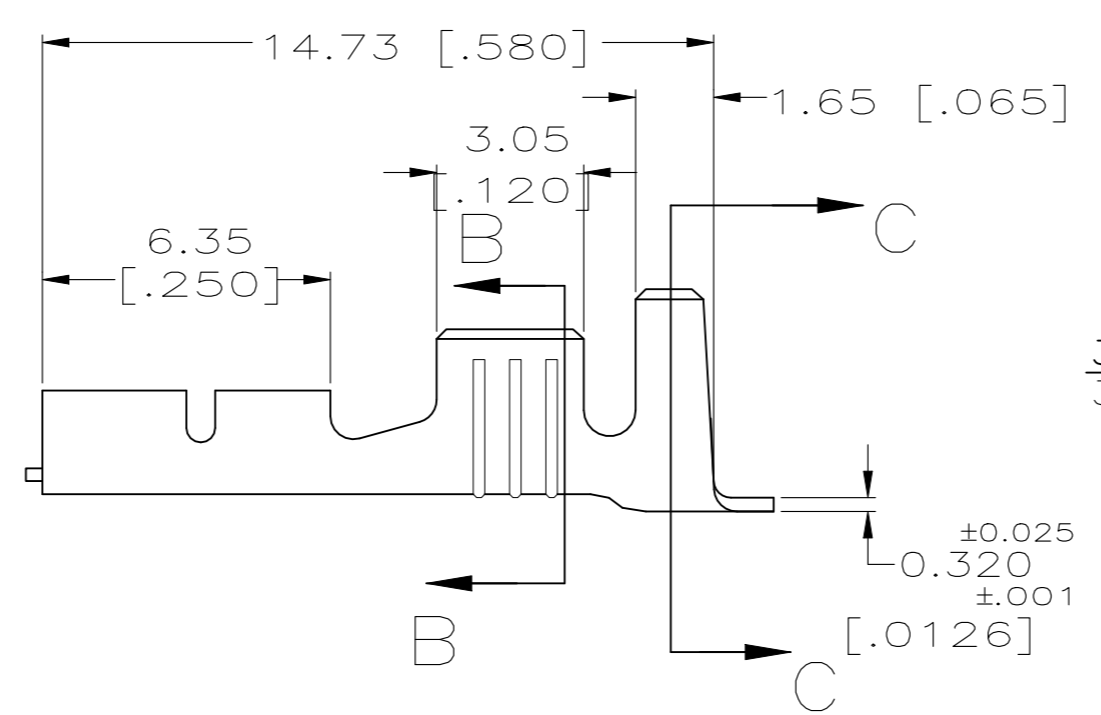
SUGGESTED MATING TAB



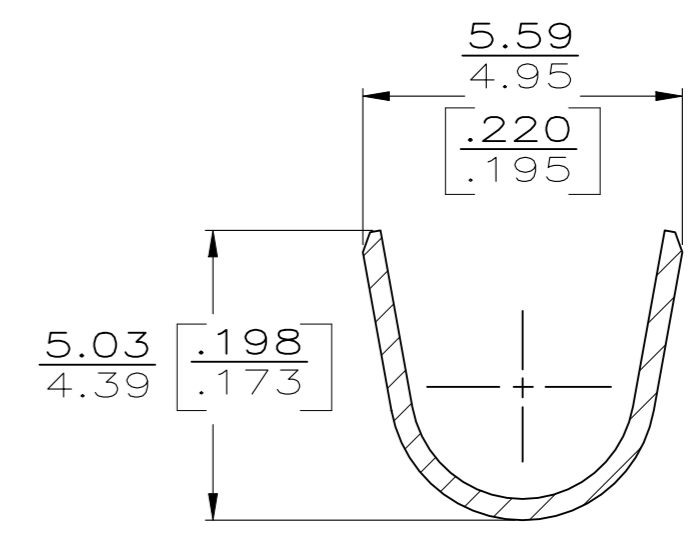
- 1 - MATL: 1/2H BRASS OR NICKEL PL STEEL.
- 2 - NO BURRS PERMISSIBLE AT HOLE.
- 3 - MUST BE FLAT WITHIN 0.076 [.003] OVER THIS LENGTH.
- 4 - HOLE MUST BE SYMMETRICAL ABOUT TAB Q̄ WITHIN 0.076 [.003]
- * TO BE USED ONLY WHEN SHOULDER IS ELIMINATED.



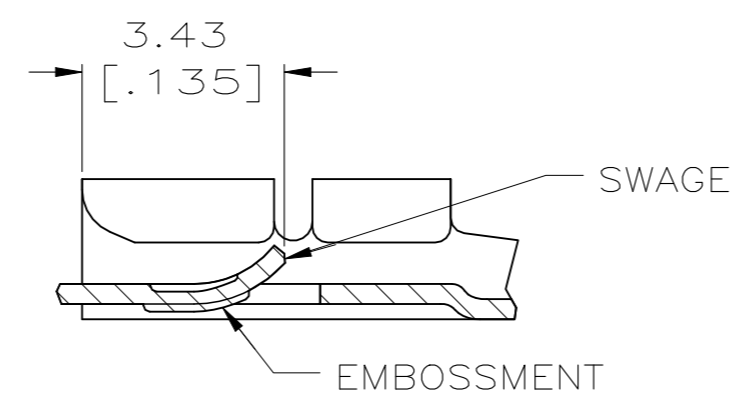
SECTION A-A
SCALE 8:1



SECTION B-B
SCALE 8:1



SECTION C-C
SCALE 8:1



SECTION D-D
SCALE 8:1

10	7	LOOSE PIECE	8	BRASS	9-1-63606-6
10	7	LOOSE PIECE	---	BRASS	9-1-63606-5
7	7	LOOSE PIECE	2	BRASS	9-1-63606-4
			8	BRASS	9-63606-6
			---	BRASS	63606-5
			2	BRASS	63606-4
			2	#4 PHOS BRONZE	4-63606-3
			2	#4 PHOS BRONZE	63606-2
			2	#4 PHOS BRONZE	63606-1
		F2DU14474AA			
		FORD P/N	FINISH	MATERIAL	PART NO.

TYPE	WIDTH	STRIP LENGTH	TYPE	WIDTH	WIRE HEIGHT	WIRE
F	4.57 [.180]	4.78 [.188]	F	2.29 [.090]	±0.051 [±.002]	2.0mm ² [14]
						1.3mm ² [16]
						0.8mm ² [18]
						±0.38 [±.015]
INSUL BARREL CRIMP			WIRE BARREL CRIMP			

THIS DRAWING IS A CONTROLLED DOCUMENT.

DWN	JR RUTH	2/25/91
CHK	MS FEHER	2/25/91
APVD	J GILLESPIE	2/25/91

TE TE Connectivity

RECPT, FASTON, LOCK-ON, 4.75 [.187] SERIES

SIZE	A2	CAGE CODE	00779	DRAWING NO	C=63606
WEIGHT	0.000000	SCALE	6:1	SHEET	1 OF 1
CUSTOMER DRAWING		REV	M8		

单击下面可查看定价，库存，交付和生命周期等信息

[>>TE Connectivity\(泰科\)](#)