

THIS DRAWING IS UNPUBLISHED. RELEASED FOR PUBLICATION  
 © COPYRIGHT - By - ALL RIGHTS RESERVED.

REVISIONS				
P	LTR	DESCRIPTION	DATE	APVD
C3		REVISED PER ECR-19-010493	18JUL2019	SR JB

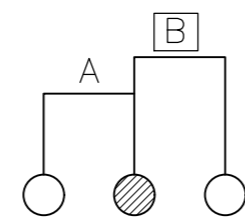
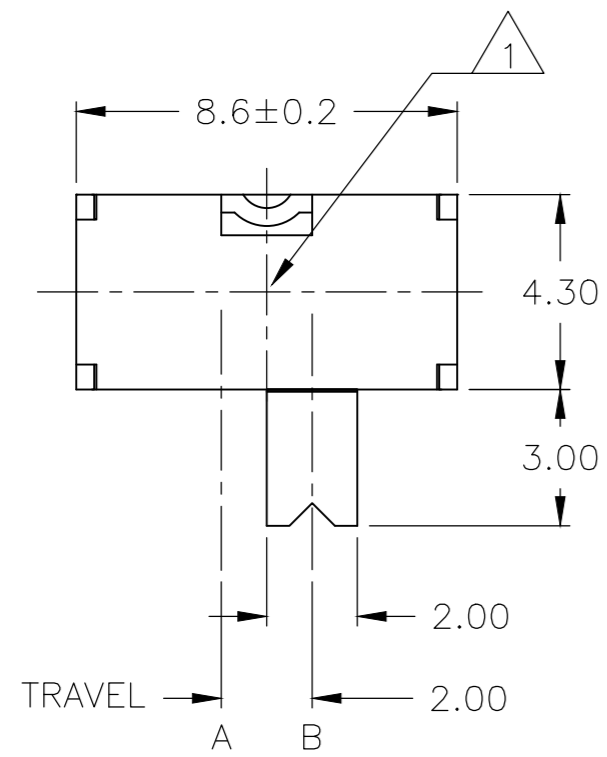
SPECIFICATIONS:  
 SINGLE POLE DOUBLE THROW  
 BREAK-BEFORE-MAKE

MATERIALS:  
 FRAME: STEEL, TIN PLATE  
 BOARD: PHENOLIC, NATURAL  
 ACTUATOR: NYLON 66 UL94HB, FINISH: BLACK.

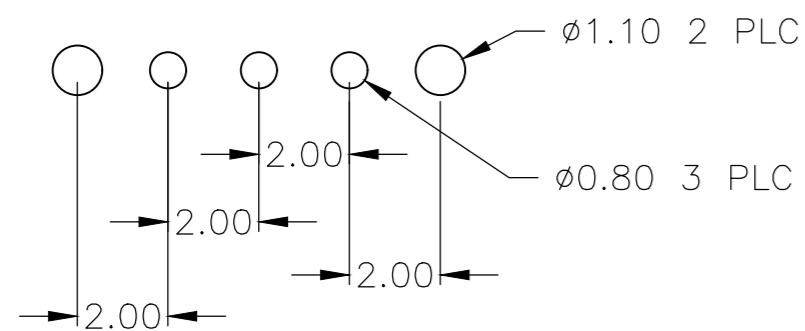
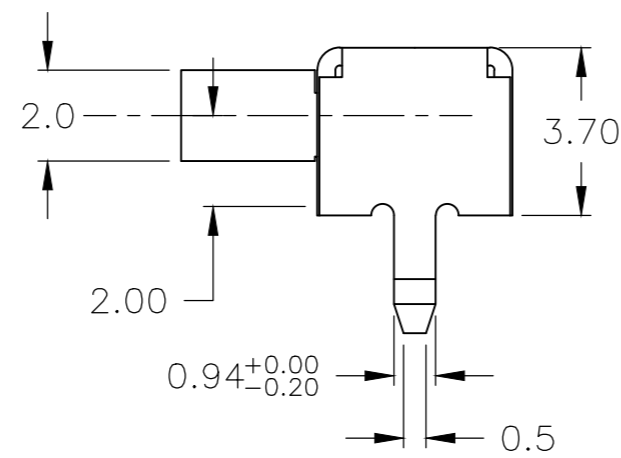
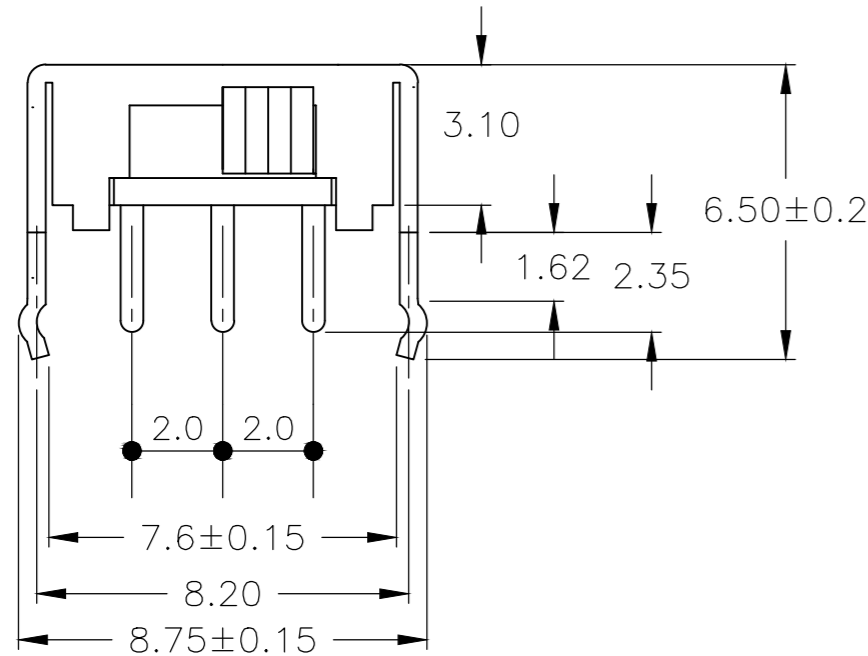
ELECTRICAL:  
 CONTACT RATING, SILVER PLATED: 200mA @ 30V DC  
 GOLD PLATED: 0.4VA @ 20V DC MAX,  
 PER EIA-448, METHOD 6  
 INITIAL CONTACT RESISTANCE, 20 MILLIOHMS MAX, PER EIA-364-23B, EACH POSITION  
 INSULATION RESISTANCE, 100 MEGOHM MIN. PER EIA-364-21C EACH POSITION  
 DIELECTRIC STRENGTH, 500 VOLT AC, PER EIA-364-20B, CONDITION 1, EACH POSITION.

MECHANICAL:  
 ACTUATION FORCE, 200+/-100 GF  
 ACTUATION TRAVEL, 2.0 MM  
 LIFE EXPECTANCY, 10,000 CYCLES, PER EIA-448, METHOD 8 AND 9  
 VIBRATION, PER EIA 364-28, CONDITION VII, LEVEL E  
 MECHANICAL SHOCK, PER EIA-364-27, CONDITION A

ENVIRONMENTAL:  
 OPERATING TEMPERATURE, -20 TO +70 DEGREES C, PER EIA 448, METHOD 10  
 STORAGE TEMPERATURE, -25 TO +85 DEGREES C  
 HUMIDITY AND TEMPERATURE CYCLING PER EIA-364-31B, METHOD III  
 TEMPERATURE LIFE PER EIA-364-17B, METHOD B, TEMPERATURE TEST CONDITION 3, TIME CONDITION B  
 THERMAL SHOCK, PER EIA-364-32C, -25 TO 85 DEGREES C  
 SOLDERABILITY, PER EIA-364-52, CLASS 2, CATEGORY 1, 95% MINIMUM COVERAGE RESISTANCE TO  
 SOLDER HEAT, PER 109-202, CONDITION B



SCHEMATIC (1P2T)



RECOMMENDED HOLE LAYOUT

1 MARK PER 202-37,

2 ALL MATERIALS AND FINISHES SHALL COMPLY WITH EU DIRECTIVE 2002/95/EC OF 27JAN2003 (ROHS)".

PRELIMINARY	GOLD	1977391-2
	SILVER	1977391-1
	PLATING MATERIAL	PART NUMBER

THIS DRAWING IS A CONTROLLED DOCUMENT.		DWN M.BINNER 12JUN2008	<b>STE</b> TE Connectivity	
DIMENSIONS: mm		CHK M SARVER 12JUN08		
TOLERANCES UNLESS OTHERWISE SPECIFIED:		APVD M SARVER 12JUN08	NAME SLIDE SWITCH, RIGHT ANGLE	
0 PLC ± -		PRODUCT SPEC	SIZE A2	CAGE CODE 00779
1 PLC ± -		APPLICATION SPEC	DRAWING NO C=1977391	RESTRICTED TO -
2 PLC ± 0.2			SCALE 6:1	SHEET 1 of 1
3 PLC ± -			REV C3	
4 PLC ± -				
ANGLES ± -				
FINISH		WEIGHT -	CUSTOMER DRAWING	
SEE NOTES		SEE NOTES		

单击下面可查看定价，库存，交付和生命周期等信息

[>>TE Connectivity\(泰科\)](#)