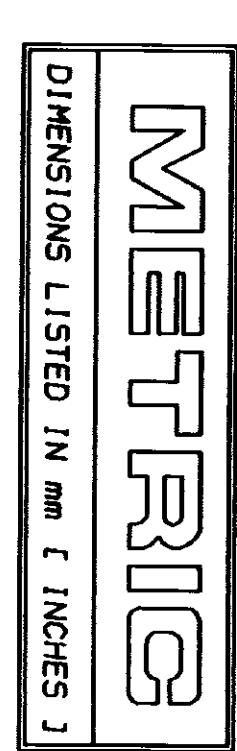


THIS DRAWING IS UNPUBLISHED.
 © COPYRIGHT 1989 BY AMP INCORPORATED. ALL INTERNATIONAL RIGHTS RESERVED.

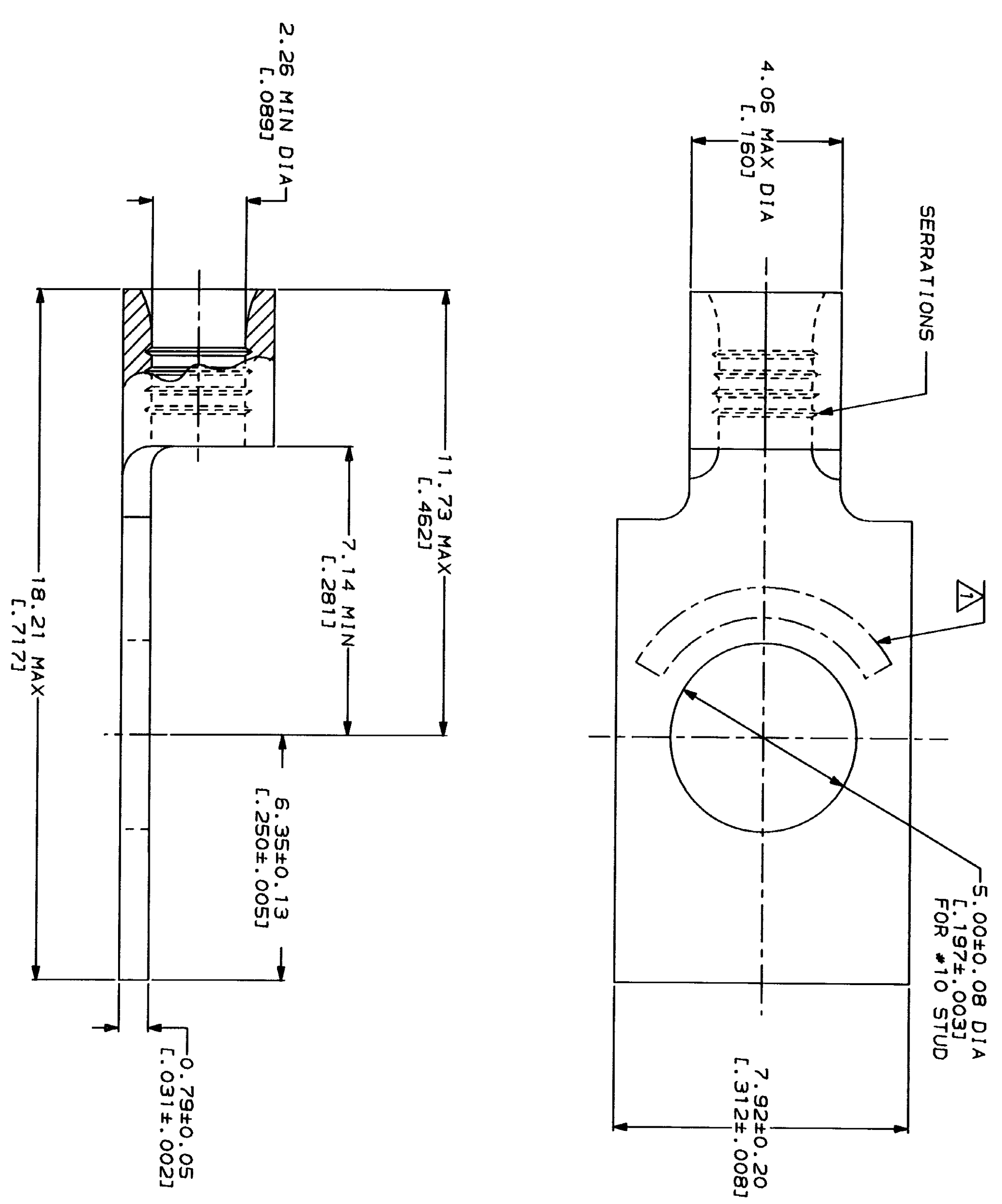
RELEASED FOR PUBLICATION
 BY AMP INCORPORATED. ALL INTERNATIONAL RIGHTS RESERVED.

LOC	DISP	REV	ZONE	LTR	DESCRIPTION	DATE	APP
G	14			A	REVISED PER 0720-0230-93	2/28/94	AMP



AMP WIRE RANGE 16-14 AWG STRANDED	UL E13288 Listed
LR7189 Certified	MILITARY P/N AND CLASS
NOT CERTIFIED	NOT APPLICABLE

△ STAMP AMP 16-14* APPROX AS SHOWN



AMP INCORPORATED
 CUSTOMER SERVICE SYSTEMS

FOR ADDITIONAL PRODUCT INFORMATION OR COPIES OF DRAWINGS AND TECHNICAL DOCUMENTS	PRODUCT INFORMATION CENTER 1-800-522-6752
FOR APPLICATION TOOLING INFORMATION	TOOLING ASSISTANCE CENTER 1-800-722-1111
FOR ORDER ENTRY	1-800-526-5142

MAX RECOMMENDED OPERATING
 TEMPERATURE:
 170°C MAX

DO NOT SCALE PRINT.
 UNLESS SPECIFIED
 DIMENSIONS IN INCHES
 TOLERANCES ON:
 2 PLG DEC ± .005
 3 PLG DEC ± .002
 ANGLES
 MATERIAL
 COPPER PER
 ASTM B-152
 ANNEALED

DR 1-28-93 TA BRINKMAN	NAME
CHK 1-28-93 DA PATTERSON	
APPD 1-28-93 DE MILLER	
APPD 1-28-93 JL HECKLEY	
PRODUCT SPEC	

AMP
 Amp Incorporated
 Harrisburg, PA 17105-3608

TERMINAL, RECTANGULAR
 TONGUE, BUDGET

FINISH
 TIN PLATE
 0.00254 [L.000100] MIN
 THK PER MIL-T-10727

APPLICATION SPEC
 WEIGHT

SIZE	CAGE CODE	DRAWING NO
SCALE 10:1	00779	320818
		SHEET 1 OF 1

单击下面可查看定价，库存，交付和生命周期等信息

[>>TE Connectivity\(泰科\)](#)