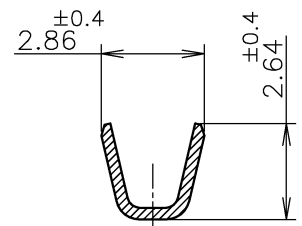
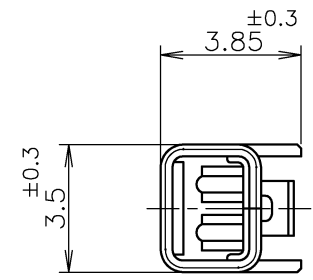
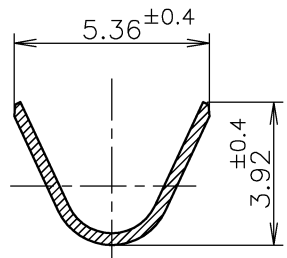


THIS DRAWING IS UNPUBLISHED. RELEASED FOR PUBLICATION
 © COPYRIGHT BY TYCO ELECTRONICS CORPORATION. ALL RIGHTS RESERVED.

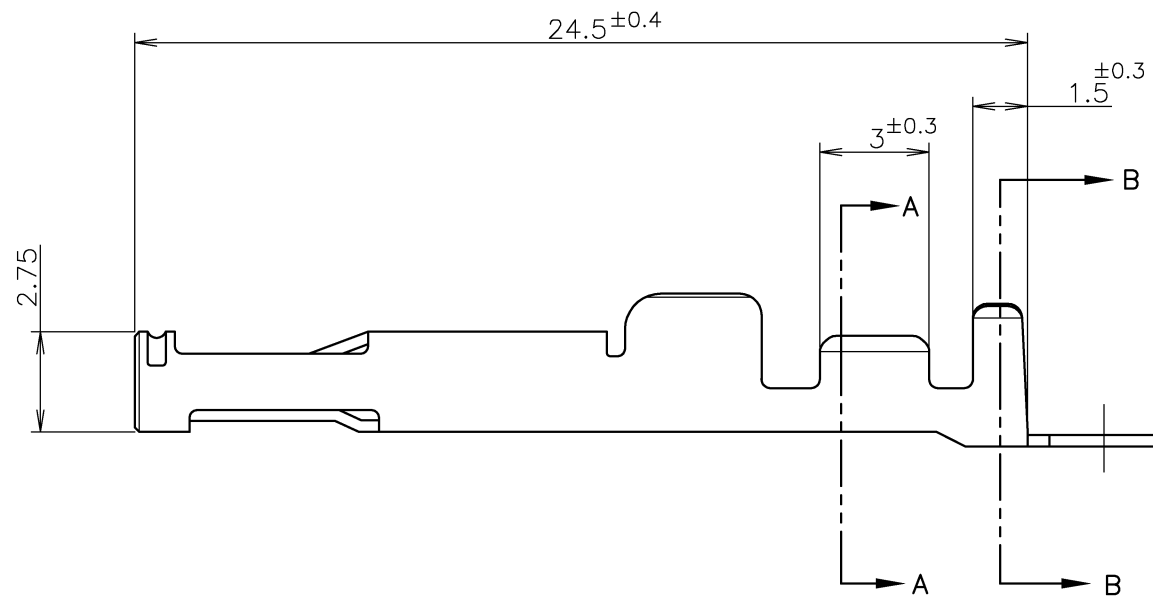
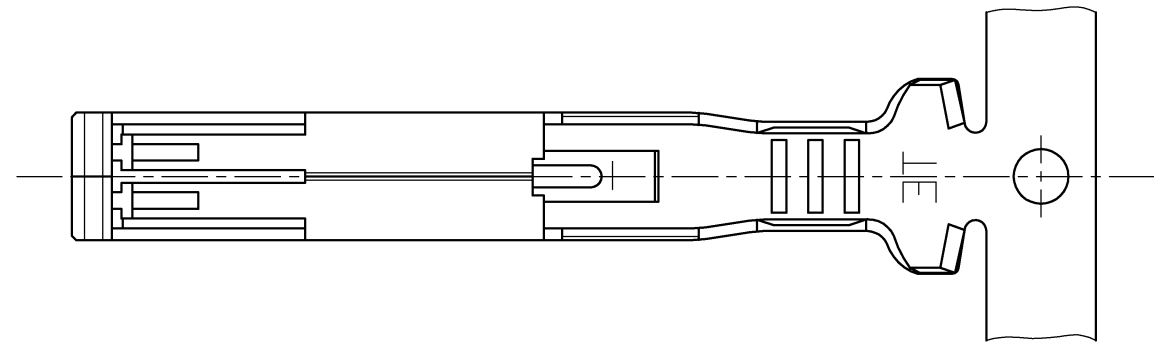
LOC	DIST	REVISIONS 変更				
P	LTR	DESCRIPTION	DATE	DWN	APVD	
J		B	REVISED	19NOV2008	M.K	T.Y



SECT A-A



SECT. B-B



注記;
 △ 材料: 銅合金
 △ 仕上げ: 材料めっき
 全面ニッケル下地めっきの上に
 接触部: 金めっき
 圧着部: 錫めっき
 △ 仕上げ: 全面錫めっき
 4 使用コネクタ型番: X-1981377-X
 △ 一般公差
 10以下: ±0.2
 10を越え30以下: ±0.25
 30を越え100以下: ±0.3
 角度: ±3°

NOTES;
 △ MATERIAL: COPPER ALLOY
 △ FINISH: PRE-PLATED
 NICKEL PL ALL OVER
 CONTACT AREA: GOLD PL.
 BARREL AREA: TIN-LEAD PL.
 △ FINISH: TIN PL ALL OVER.
 4 USED CONNECTOR P/N: X-1981377-X
 △ GENERAL TOLERANCE
 10 ≥: ±0.2
 30 ≥ 10: ±0.25
 100 ≥ 30: ±0.3
 ANGLES: ±3°

△	1-1981379-1
△	1981379-1
仕上げ FINISH	P/N

WIRE RANGE 絶合電線断面積 0.52~1.38mm ² (AWG20~16)	INSULATION DIA 被覆外径 φ 1.82~3.21 mm
--	--

THIS DRAWING IS A CONTROLLED DOCUMENT.		DWN M.KATO 17APR2008	Tyco Electronics AMP K.K. Kawasaki, Japan	
DIMENSIONS: 単位: 耗 mm		CHK T.YAMADA 17APR2008	NAME 名称	
TOLERANCES UNLESS OTHERWISE SPECIFIED: 一般公差		APVD T.YAMADA 17APR2008	PRODUCT SPEC 製品規格 108-78473	
0 PLC ± 1 PLC ± 2 PLC ± 3 PLC ± 4 PLC ± ANGLES ±		APPLICATION SPEC 取付適用規格 114-5427		
MATERIAL 材料 △ 1	FINISH 仕上 △ 2 △ 3	WEIGHT	SIZE A3	CAGE CODE 00779
CUSTOMER DRAWING		DRAWING NO 番号 G-1981379		RESTRICTED TO
SCALE 尺度 5:1		SHEET 1 of 1		REV B

单击下面可查看定价，库存，交付和生命周期等信息

[>>TE Connectivity\(泰科\)](#)