

Thermofit[®] Molded Parts Specification Control Drawing

Part Number : 101A052-3-01

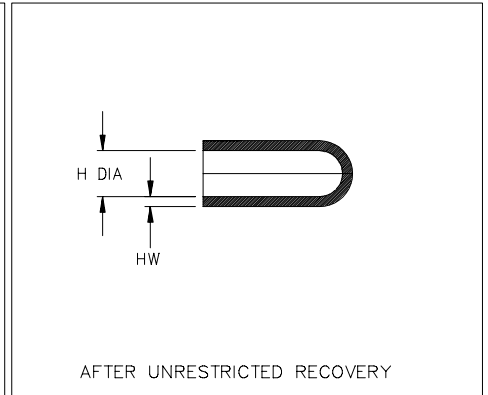
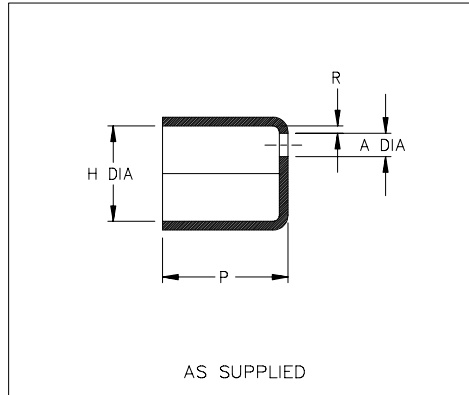
Description : Cap

If this document is printed it becomes uncontrolled.
Check for the latest revision.

LIMITED DISTRIBUTION

NOTES

- All dimensions are in $\frac{\text{inches}}{\text{[millimeters]}}$
- Dimensions appearing in table are as follows:
a - As Supplied
b - After Unrestricted Recovery
- Coating is optional. As supplied dimensions appearing in table are for uncoated parts. When coating is added, entry diameters will be reduced by .06 max.



PART NUMBER	H		P Min a	A ±20% a	HW ±20% b	R Ref a
	Min a	Max b				
101A052-3-01	.77 [19,5]	.37 [9,4]	.97 [24,6]	.19 [4,8]	.08 [2,03]	.06 [1,5]

Raychem

RAYCHEM CORPORATION
300 CONSTITUTION DRIVE
MENLO PARK, CALIFORNIA 94025
(415) 361-6055

Revision : A

Date : 04/25/91

Part Number : 101A052-3-01

Description : Cap

Thermofit[®] Molded Parts Specification Control Drawing

Part Number : 101A052-3-01

Description : Cap

LIMITED DISTRIBUTION

MATERIAL DASH NO.	MATERIAL DESCRIPTION	RT SPEC	COATING SLASH NO.	COATING S NO.	COATING DESCRIPTION
-3	Polyolefin, Semi-Rigid	RT-301			

ORDERING INFORMATION

Base part number 101A052
 Material dash number -3
 (See Compatability Chart)
 Modification number -01
 (If necessary, see front of scd binder
for a complete list)
 Adhesive slash number /XX
 (If necessary, see Compatability Chart)

THIS DRAWING IS SUBJECT TO CHANGE WITHOUT NOTICE; CONSULT YOUR
NEAREST FIELD REPRESENTATIVE FOR CURRENT REVISION

Raychem

RAYCHEM CORPORATION
300 CONSTITUTION DRIVE
MENLO PARK, CALIFORNIA 94025
(415) 361-6055

Revision : A

Date : 04/25/91

Part Number : 101A052-3-01

Description : Cap

单击下面可查看定价，库存，交付和生命周期等信息

[>>TE Connectivity\(泰科\)](#)