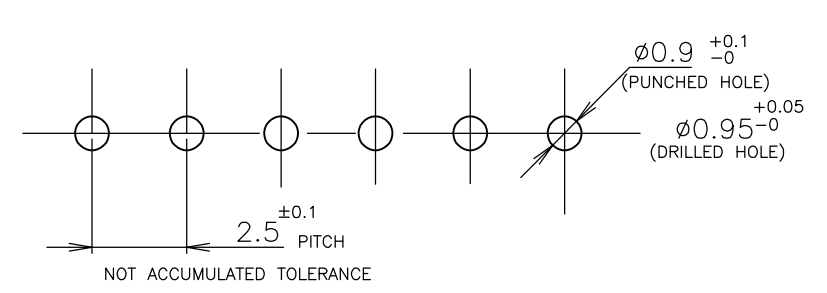
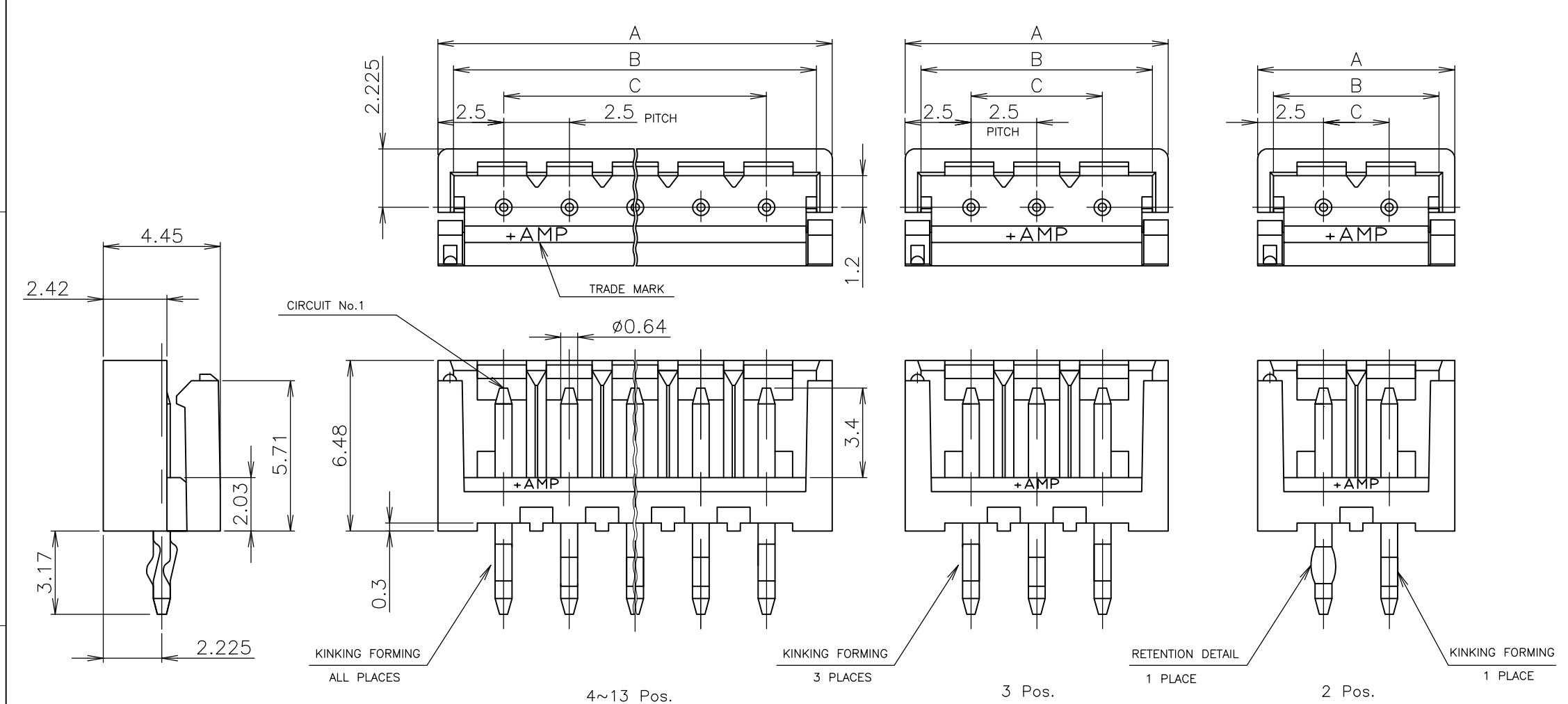


THIS DRAWING IS UNPUBLISHED. RELEASED FOR PUBLICATION
 © COPYRIGHT By - ALL RIGHTS RESERVED.

| REVISIONS 変更 | | | | |
|-----------------|-----|------------------------|---------|----------|
| P | LTR | DESCRIPTION | DATE | DWN APVD |
| | B2 | REVISED(ECR-16-011887) | 08SEP16 | T.Q W.H |



RECOMMENDABLE P.C.BOARD LAYOUT
(B.C.B THK:1.0~1.6)

- NOTES;
1. MATERIAL : HOUSING - 66NYLON GF (UL94V-0)
POST - PRE-TIN BRASS
 2. PRODUCT SPEC : 108-5385
 3. MATING COUNTER PART NUMBER : P/N 177534

| COLOR | DIMENSIONS (mm) | | | | PART No. |
|---------|-----------------|------|------|----------|------------|
| | 30.0 | 34.2 | 35.0 | 13 | |
| BLACK | 27.5 | 31.7 | 32.5 | 12 | 3-917500-2 |
| | 25.0 | 29.2 | 30.0 | 11 | 3-917500-1 |
| | 22.5 | 26.7 | 27.5 | 10 | 3-917500-0 |
| | 20.0 | 24.2 | 25.0 | 9 | 2-917500-9 |
| | 17.5 | 21.7 | 22.5 | 8 | 2-917500-8 |
| | 15.0 | 19.2 | 20.0 | 7 | 2-917500-7 |
| | 12.5 | 16.7 | 17.5 | 6 | 2-917500-6 |
| | 10.0 | 14.2 | 15.0 | 5 | 2-917500-5 |
| | 7.5 | 11.7 | 12.5 | 4 | 2-917500-4 |
| | 5.0 | 9.2 | 10.0 | 3 | 2-917500-3 |
| NATURAL | 2.5 | 6.7 | 7.5 | 2 | 2-917500-2 |
| | 30.0 | 34.2 | 35.0 | 13 | 1-917500-3 |
| | 27.5 | 31.7 | 32.5 | 12 | 1-917500-2 |
| | 25.0 | 29.2 | 30.0 | 11 | 1-917500-1 |
| | 22.5 | 26.7 | 27.5 | 10 | 1-917500-0 |
| | 20.0 | 24.2 | 25.0 | 9 | 917500-9 |
| | 17.5 | 21.7 | 22.5 | 8 | 917500-8 |
| | 15.0 | 19.2 | 20.0 | 7 | 917500-7 |
| | 12.5 | 16.7 | 17.5 | 6 | 917500-6 |
| | 10.0 | 14.2 | 15.0 | 5 | 917500-5 |
| 7.5 | 11.7 | 12.5 | 4 | 917500-4 | |
| 5.0 | 9.2 | 10.0 | 3 | 917500-3 | |
| 2.5 | 6.7 | 7.5 | 2 | 917500-2 | |

OBSOLETE
OBSOLETE
OBSOLETE
OBSOLETE
OBSOLETE
OBSOLETE

| | | | | | |
|--|--|------------------------------------|---|------------------------|--|
| THIS DRAWING IS A CONTROLLED DOCUMENT. | | DWN A.ONO 07DEC94 | TE Connectivity GF POST HDR ASSEMBLY 2.5mm PITCH METRIC INTERCONNECT SYSTEM | | |
| DIMENSIONS: 単位: 耗 mm | | CHK S.KUBOUCHI 07DEC94 | | | |
| TOLERANCES UNLESS OTHERWISE SPECIFIED: 一般公差 | | PRODUCT SPEC 製品規格 SEE NOTE 2 | | RESTRICTED TO | |
| 0-PLC ± 0-10mm: ±0.2 1-PLC ± 10-30mm: ±0.25 2-PLC ± 30-99mm: ±0.3 3-PLC ± Angle: ±3' 4-PLC ± ANGLE ± | | APPLICATION SPEC 取付適用規格 | | SIZE A3 | |
| MATERIAL 材料 SEE NOTE 1 | | FINISH 仕上 SEE NOTE | | CAGE CODE 00779 | |
| | | WEIGHT 0.000000 | | DRAWING NO C-917500 | |
| | | CUSTOMER DRAWING | | SCALE 尺度 5:1 | |
| | | | | SHEET 1 OF 1 | |
| | | | | REV B2 | |

单击下面可查看定价，库存，交付和生命周期等信息

[>>TE Connectivity\(泰科\)](#)