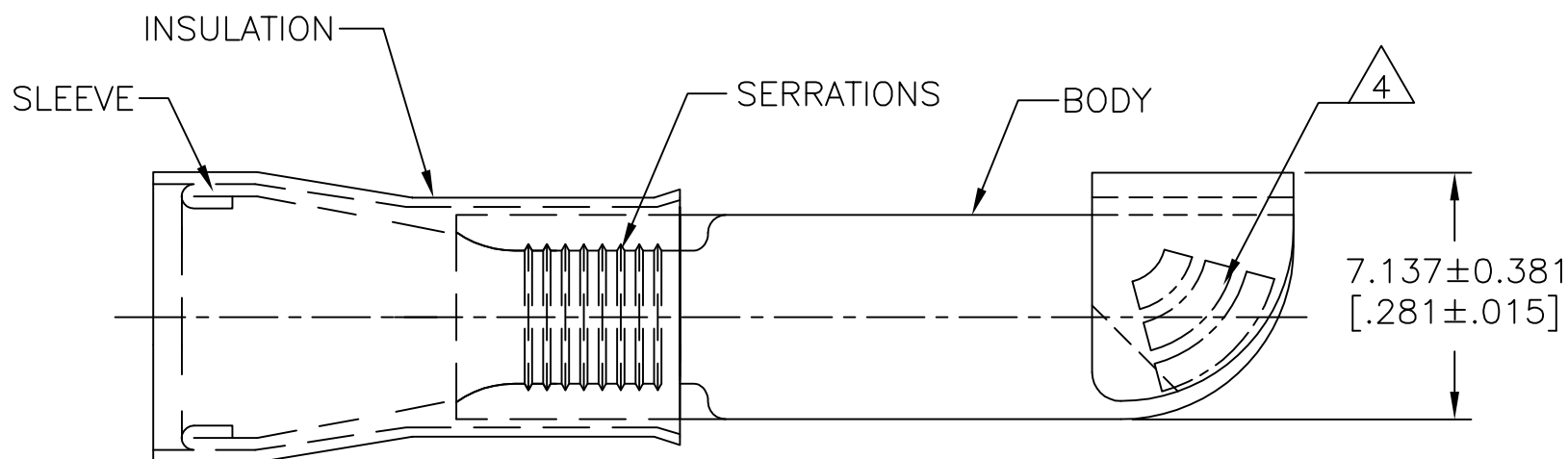
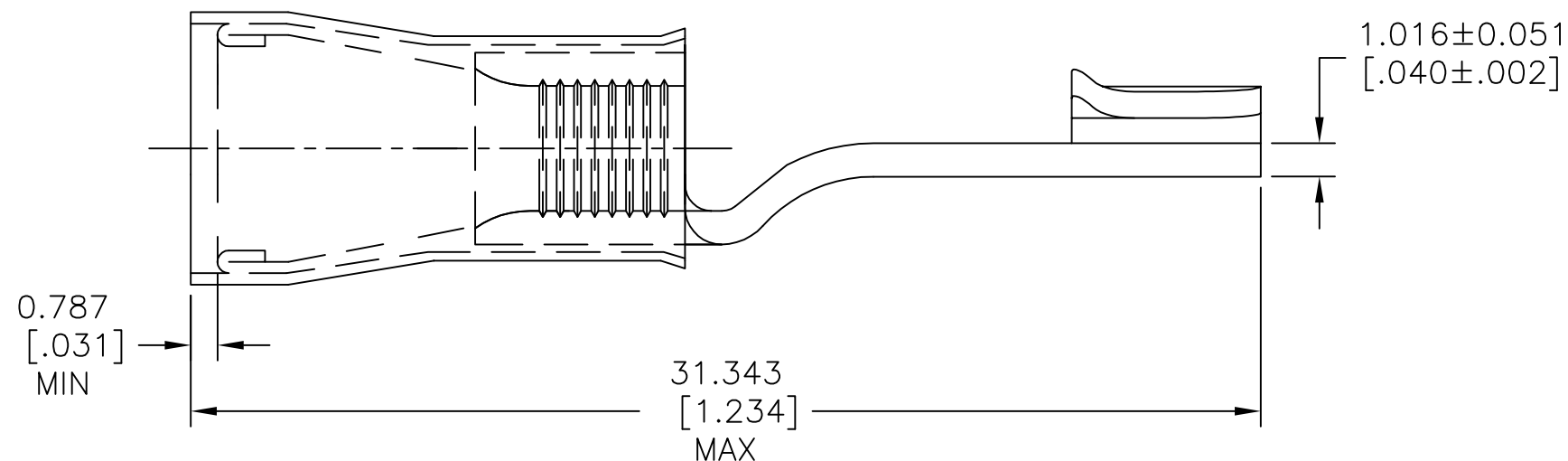


P	LTR	DESCRIPTION	DATE	DWN	APVD
	B1	REDRAWN PER ECR 09-016745	28JUL09	JR	TM
	B2	REVISED PER ECO-17-007400	27NOV2017	RS	DR



AMP WIRE RANGE	RU FILE E13288
12-10 AWG STRANDED	12-10 AWG STRANDED

- 1 WIRE INSUL ϕ 3.810-5.842 [ϕ .150-.230]
- 2 MATERIAL: BODY - CU PER ASTM B152
SLEEVE - CU PER ASTM B152
INSULATION - NYLON ASTM D4066 TYPE 1.
- 3 FINISH: BODY & SLEEVE: TIN PER ASTM B-545
INSULATION - COLOR: YELLOW.
- 4 STAMP AMP 12-10* 6-9 APPROX AS SHOWN.



500	LOOSE PIECE	320620
QTY	PACKAGE TYPE	PART NO

MAX RECOMMENDED OPERATING TEMPERATURE: 105°C [221°F] VOLTAGE RATING: 300 V MAX CIRCULAR MIL AREA: 2.62-6.64mm ² [5,180-13,100] STRANDED	THIS DRAWING IS A CONTROLLED DOCUMENT.		DWN jr_ruth 12JUN09	TE Connectivity NAME TOM MICHIELUTTI PRODUCT SPEC UL 486A-B			RESTRICTED TO		
	DIMENSIONS: mm [INCHES]	TOLERANCES UNLESS OTHERWISE SPECIFIED:	CHK TOM MICHIELUTTI 12JUN09				APVD TOM MICHIELUTTI 12JUN09	SIZE	CAGE CODE
		0 PLC ± - 1 PLC ± - 2 PLC ± - 3 PLC ± 0.127[.005] 4 PLC ± - ANGLES ± 5° FINISH		APPLICATION SPEC 114-2157 WEIGHT -	A3	00779	C=320620	-	
MATERIAL			CUSTOMER DRAWING			SCALE 5:1	SHEET 1 OF 1	REV B2	

单击下面可查看定价，库存，交付和生命周期等信息

[>>TE Connectivity\(泰科\)](#)