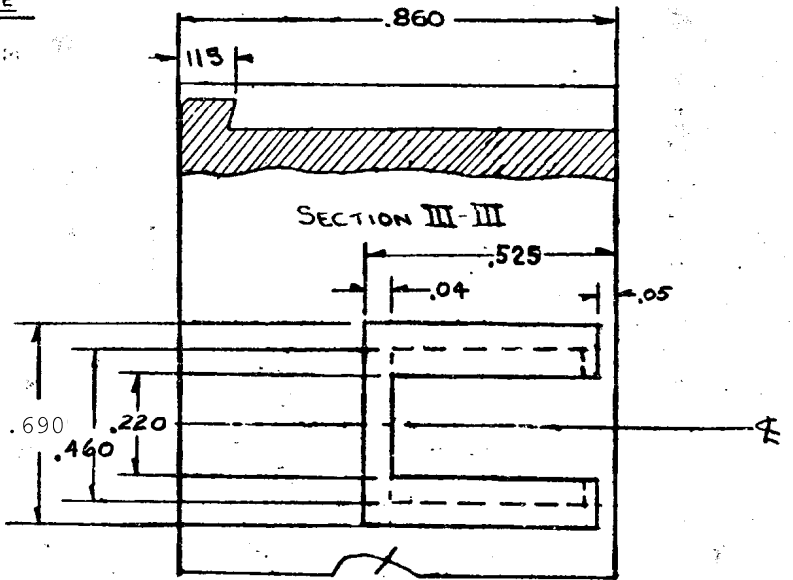


RECOMMENDED MINIMUM HOLE



△ OBSOLETE

C2	REVISED PER ECR-21-101087	SS	VS	ESMT2025
C1	ECR-13-010956	MGT	R.P.	06AUG2013
C	Added 1-190514-0 NATURAL	12/5	gld	7-771
R	MATERIAL CHANGE			
A	CHG'G MAT'L			

REQUIRED PER ASSEMBLY	

1480516-1	BLACK NYLON		
1480516-0	NATURAL NYLON		
OWNER	NUMBER	NAME	REMARKS
© 1969 BY INCORPORATED. ALL RIGHTS RESERVED. PRODUCTS COVERED BY PATENTS AND/OR PATENTS PENDING.			
DW HILLBISH 6/3/69	MATERIAL AND FINISH <b>NYLON</b>		CLASS .086 DIA
RUM 9/6/69	TOLERANCE EXCEPT AS NOTED .015 ± .005		TYP WIRE - LANGE - INSULATION TYPE
F. J. ... 7/2/69	SCALE 1" = 1"		LOG CM
10 CIRCUIT SOCKET HOUSING			REV C2

单击下面可查看定价，库存，交付和生命周期等信息

[>>TE Connectivity\(泰科\)](#)