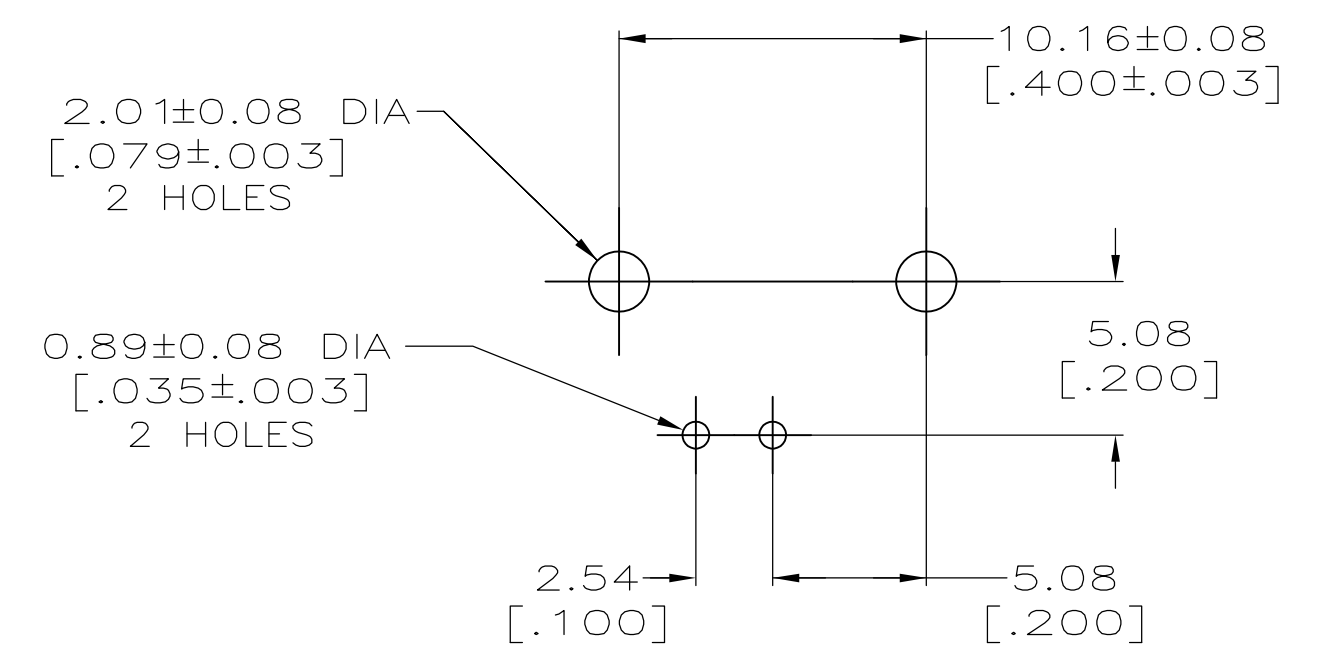
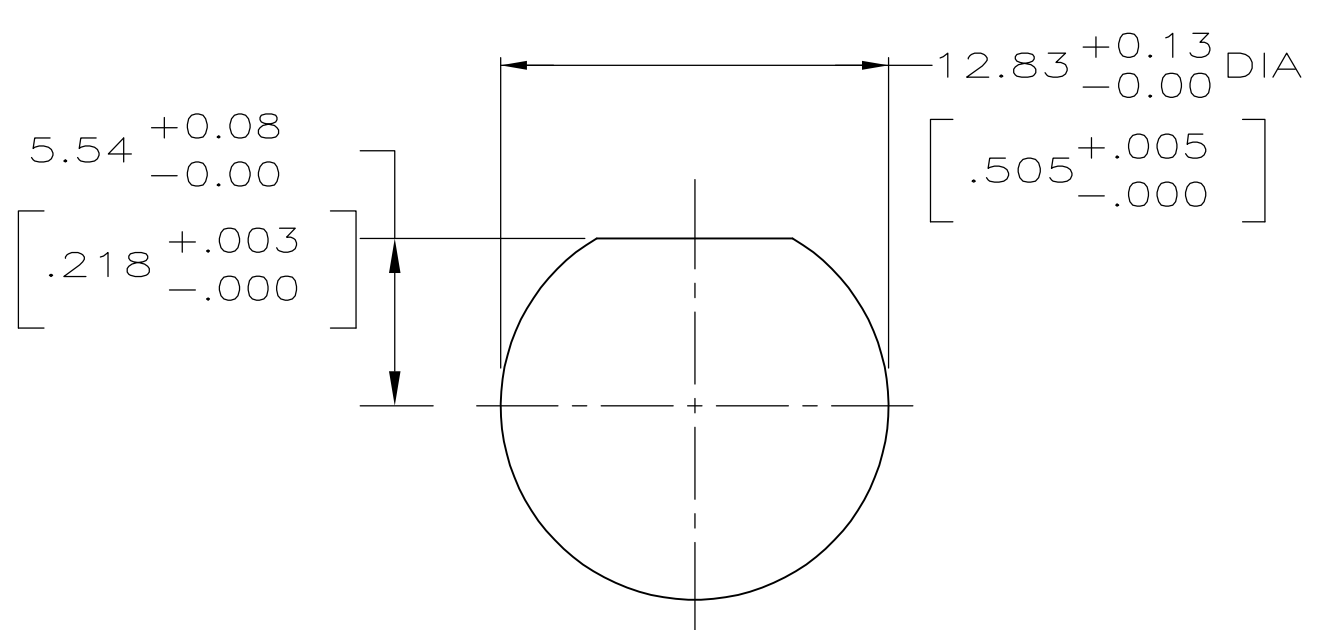
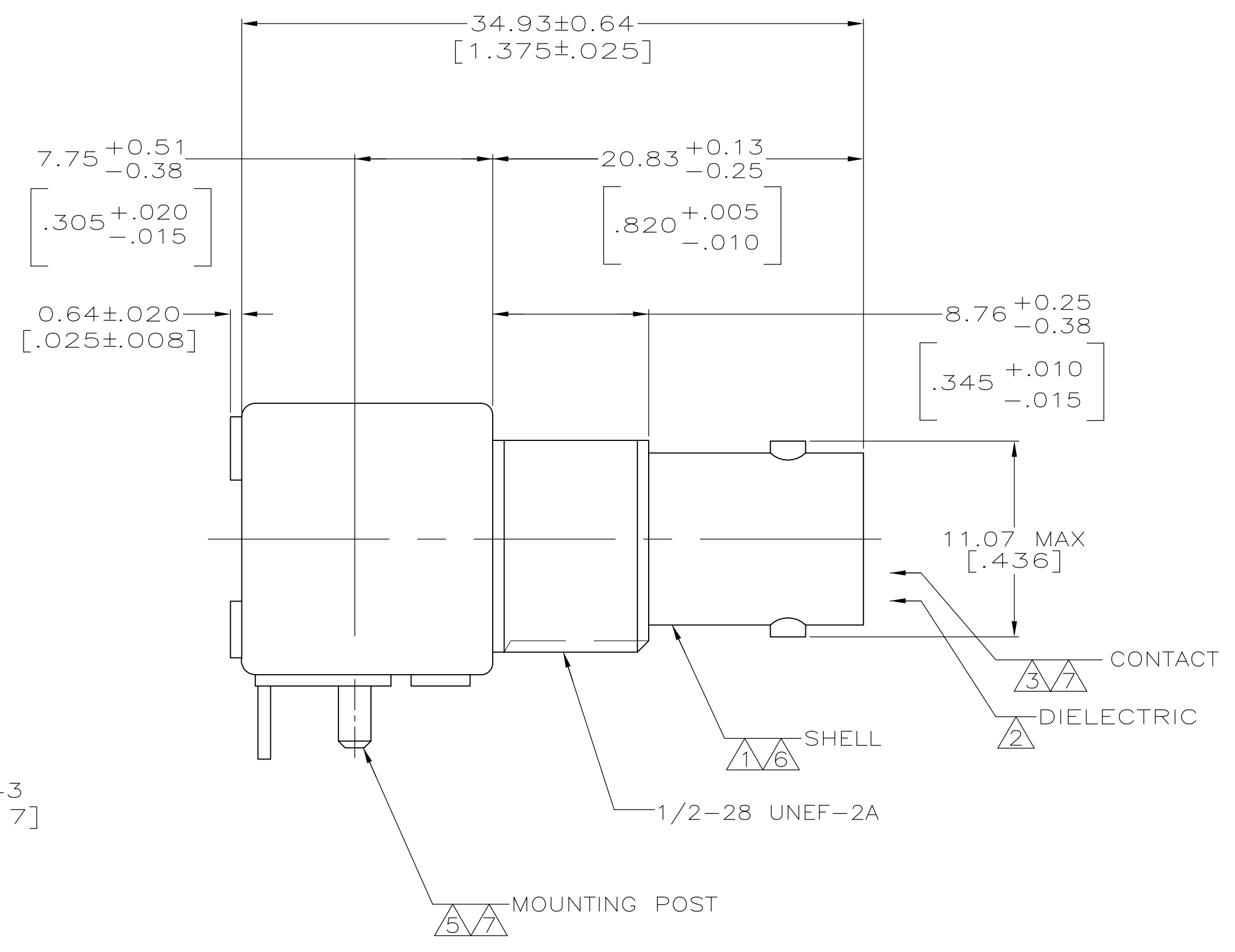
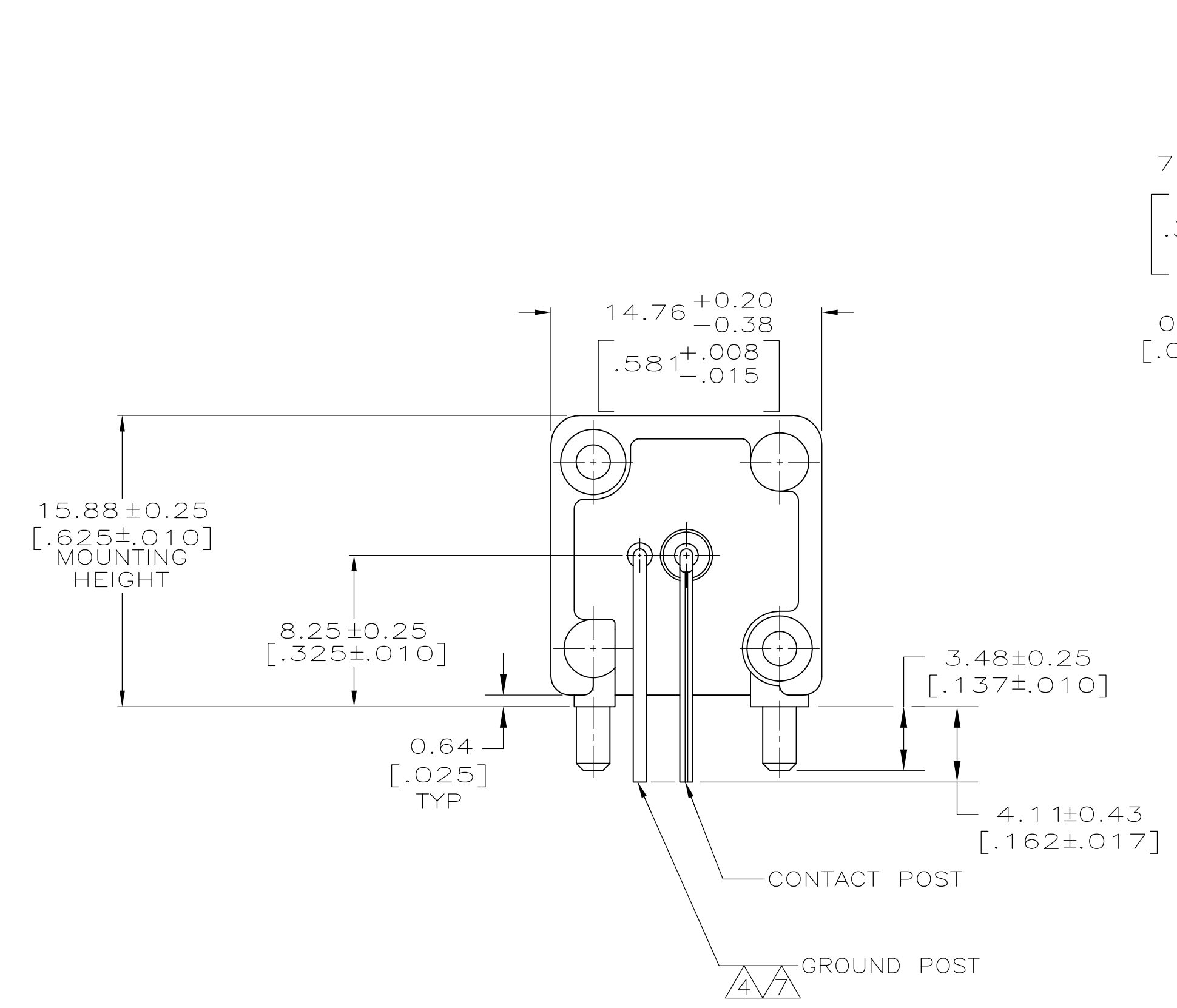


LOC	DIST	REVISIONS			
		REV	DESCRIPTION	DATE	BY
AJ	16	A1	REVISED PER ECO-11-005030	11MAR11	RK HMR



- ① ZINC PER QQ-Z-363.
- ② POLYMETHYLPENTENE PER ASTM-D-1238.
- ③ PHOSPHOR BRONZE PER QQ-B-750.
- ④ BRASS PER ASTM-B-453.
- ⑤ BRASS PER ASTM-B-16.
- ⑥ NICKEL PLATE PER QQ-N-290, 3.81  $\mu\text{m}$  [ $.000150$ ] MINIMUM THICK.
- ⑦ TIN PLATE PER ASTM-B-545, 3.81  $\mu\text{m}$  [ $.000150$ ] MINIMUM THICK.
- 8. SEE INSTRUCTION SHEET 408-2769.

5227661-1  
PART NUMBER

THIS DRAWING IS A CONTROLLED DOCUMENT.		DIN J. ALCORTA - 26APR2005		STE TE Connectivity	
DIMENSIONS: mm [INCHES]		TOLERANCES UNLESS OTHERWISE SPECIFIED:		APVD J. HAVENER 26APR2005	
0 PLC ± -		1 PLC ± -		NAME JACK, RIGHT ANGLE, PCB	
1 PLC ± -		2 PLC ± 0.05 [.002]		PRODUCT SPEC 108-12078	
2 PLC ± -		3 PLC ± -		APPLICATION SPEC	
3 PLC ± -		4 PLC ± -		SIZE CAGE CODE DRAWING NO	
4 PLC ± -		ANGLES ± -		A1 00779 C=5227661	
MATERIAL		FINISH		WEIGHT	
①②③④⑤⑥⑦		①②③④⑤⑥⑦		A1 00779 C=5227661	
CUSTOMER DRAWING		SCALE 4:1		SHEET 1 OF 1 REV A1	

单击下面可查看定价，库存，交付和生命周期等信息

[>>TE Connectivity\(泰科\)](#)