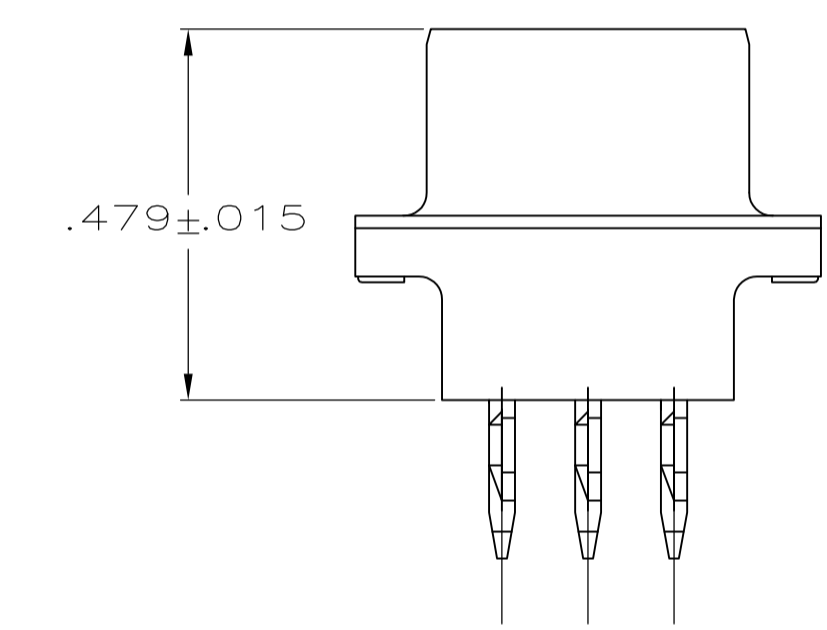
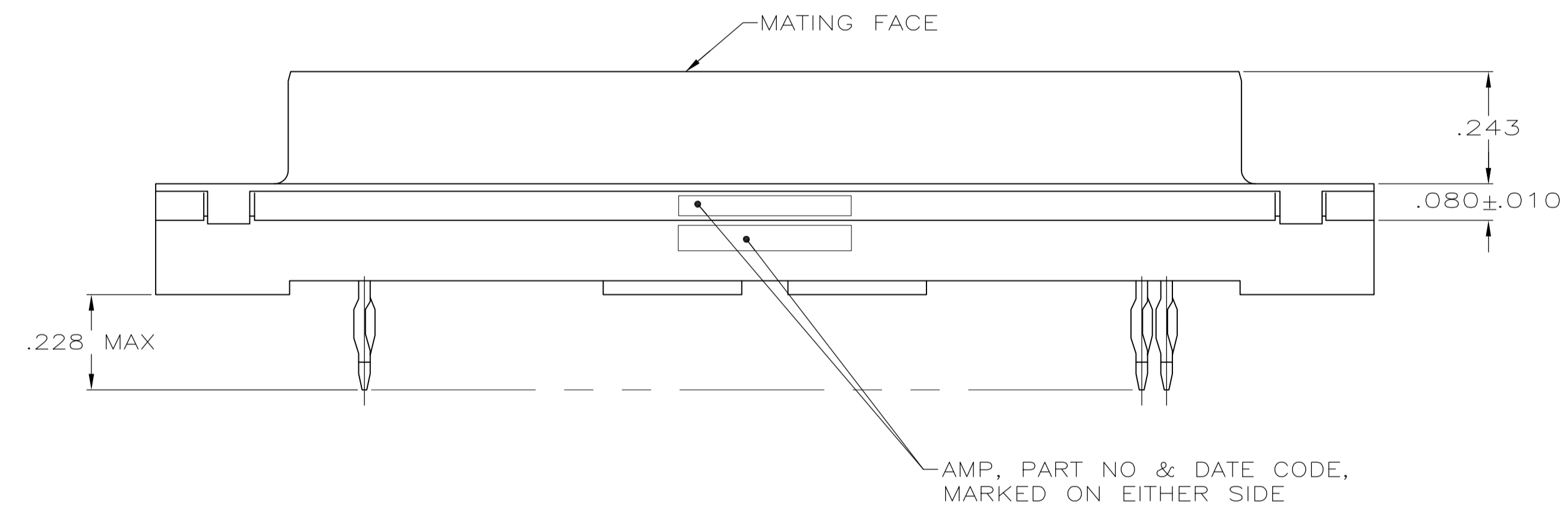


- 1 FOR USE WITH .093 MINIMUM THICK PRINTED CIRCUIT BOARD. REFER TO APPLICATION SPECIFICATION FOR PRINTED CIRCUIT BOARD LAYOUT DIMENSIONS AND FINISH RECOMMENDATIONS.
- 2 DUPLEX PLATED: GOLD FLASH ON MATING SURFACE, BRIGHT TIN OR BRIGHT TIN LEAD ON COMPLIANT PIN, ALL OVER NICKEL.
- 3 .000030 MINIMUM GOLD IN MATING AREA.
.000100 MINIMUM TIN OR TIN-LEAD ON COMPLIANT PIN.
ALL OVER .000050 MINIMUM NICKEL.
OR
GOLD FLASH OVER PALLADIUM NICKEL
.000030 MINIMUM TOTAL IN MATING AREA.
.000100 MINIMUM TIN OR TIN-LEAD ON COMPLIANT PIN.
ALL OVER .000050 MINIMUM NICKEL.
- 4 PLATED .0002-.0004 BRIGHT TIN



SUPERSEDED BY 747143-2	747143-2
	747143-1
CONTACT FINISH	PART NO

THIS DRAWING IS A CONTROLLED DOCUMENT. DIMENSIONING AND TOLERANCING PER ASME Y14.5M-2009		DIN D. HARDY 04-12-94	TE Connectivity	
DIMENSIONS: INCHES		CHK R. STONE 04-26-94	NAME	
TOLERANCES UNLESS OTHERWISE SPECIFIED:		APVD	RCPT ASSY, SIZE 5, 50 POSN, AMPLIMITE™	
0 PLC ± -	1 PLC ± -	PRODUCT SPEC	HDP, MDM PROFILE, W/ ACTION	
2 PLC ± -	3 PLC ± .005	APPLICATION SPEC	PIN CONT & METAL SHELL	
4 PLC ± -	ANGLES ± ± °	114-40026	SIZE	CAGE CODE
MATERIAL: HOUSING: FLAME RETARDANT 94V-0, PAIRED THERMOPLASTIC; COLOR: BLACK; CONTACTS: COPPER ALLOY; SHELL: CARBON STEEL		FINISH: CONTACTS: SEE TABLE; SHELL: △	RESTRICTED TO	
WEIGHT		A1	DRAWING NO	747143
CUSTOMER DRAWING		SCALE	4:1	SHEET 1 OF 1

单击下面可查看定价，库存，交付和生命周期等信息

[>>TE Connectivity\(泰科\)](#)