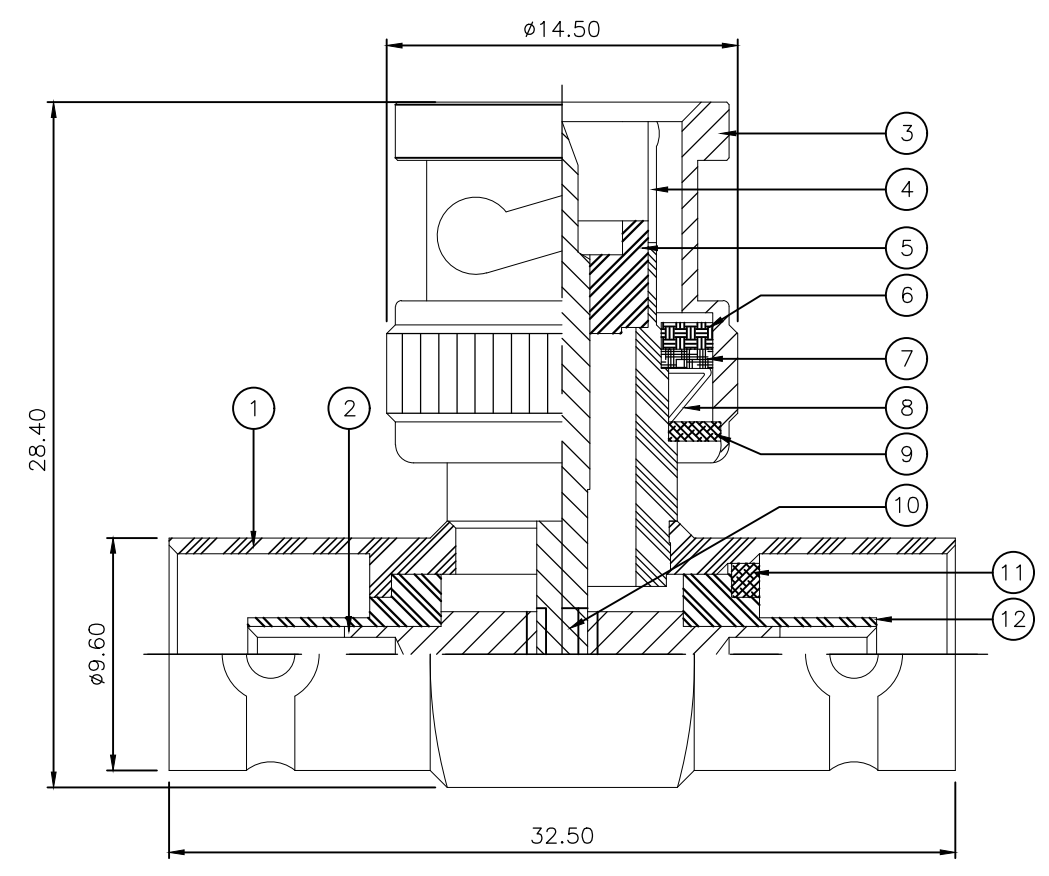


P	LTR	DESCRIPTION	DATE	DWN	APVD
	B1	REVISED PER ECO-20-016530	23NOV2020	RZ	RS

NOTES:

- 1 PACK IN ACCORDANCE WITH AMP SPEC 107-3275
- 2 100 TRAY PACK IN ACCORDANCE WITH AMP SPEC 107-3275
- 3 Ag PLATING
- 4 Ni PLATING
- 5 THIS ITEM MUST BE WHITE
- 6 ELECTRICAL CHARACTERISTICS
 FREQUENCY RANGE: DC - 2 GHz
 NOMINAL IMPEDANCE: 75 Ohm
 INSULATION RESISTANCE: 5000 MOhm
 WORKING VOLTAGE: 500 Volts RMS at Sea Level
 DIELECTRIC WITHSTAND VOLTAGE: 1500 Volts RMS Max
 CONTACT RESISTANCE:
 CENTRE CONTACT: 1.50 mOhm Max
 OUTER CONTACT: 0.20 mOhm Max
 VSWR @ xGHz: N/A
 INSERTION LOSS xdb: N/A
- 7 MECHANICAL CHARACTERISTICS
 COUPLING RETENTION FORCE: N/A
 CABLE RETENTION FORCE: N/A
 DURABILITY: 500 Cycles Min
- 8 ENVIRONMENTAL CHARACTERISTICS
 OPERATING TEMPERATURE: -65 to +165 DegC
- 9 FOR TECHNICAL DATA REFER TO YOUR LOCAL TYCO ELECTRONICS SALES OFFICE
- 10 ALL DIMENSIONS ARE NOMINAL FOR REFERENCE ONLY UNLESS OTHERWISE STATED



QTY	QTY PER ASSY	MATERIAL	DESCRIPTION	ITEM
2	2	PTFE	INSULATION	12
1	1	BRASS	SLEEVE	11
1	1	BRASS	CONTACT II	10
1	1	BRASS	WASHER	9
1	1	SPRING STEEL	SPRING	8
1	1	BRASS	RETAINING RING	7
1	1	SILICON RUBBER	GASKET	6
1	1	PTFE	INSULATION	5
1	1	BRASS	BODY 2	4
1	1	BRASS	SHELL	3
1	1	BRASS	CONTACT I	2
1	1	BRASS	BODY 1	1
6--0	1--0			

QTY	QTY PER ASSY	MATERIAL	DESCRIPTION	ITEM
6--0	1--0			

THIS DRAWING IS A CONTROLLED DOCUMENT.		DWN J.SANDWELL 13JUN06
DIMENSIONS: mm		CHK S.PARLOW 13JUN06
TOLERANCES UNLESS OTHERWISE SPECIFIED:		APVD F.WHEELER-KING 13JUN06
0 PLC	± -	PRODUCT SPEC
1 PLC	± -	
2 PLC	± -	APPLICATION SPEC
3 PLC	± -	
4 PLC	± -	
ANGLES	± -	
MATERIAL	FINISH	WEIGHT
SEE TABLE	-	0.000000

DWN J.SANDWELL 13JUN06		TE Connectivity	
CHK S.PARLOW 13JUN06			
APVD F.WHEELER-KING 13JUN06		NAME BNC TEE ADAPTOR J-P-J 75 OHM	
PRODUCT SPEC		-	
APPLICATION SPEC		-	
SIZE	CAGE CODE	DRAWING NO	RESTRICTED TO
	A300779	C-1478039	-
CUSTOMER DRAWING		SCALE	SHEET
		NTS	1 OF 1
		REV	B1

单击下面可查看定价，库存，交付和生命周期等信息

[>>TE Connectivity\(泰科\)](#)