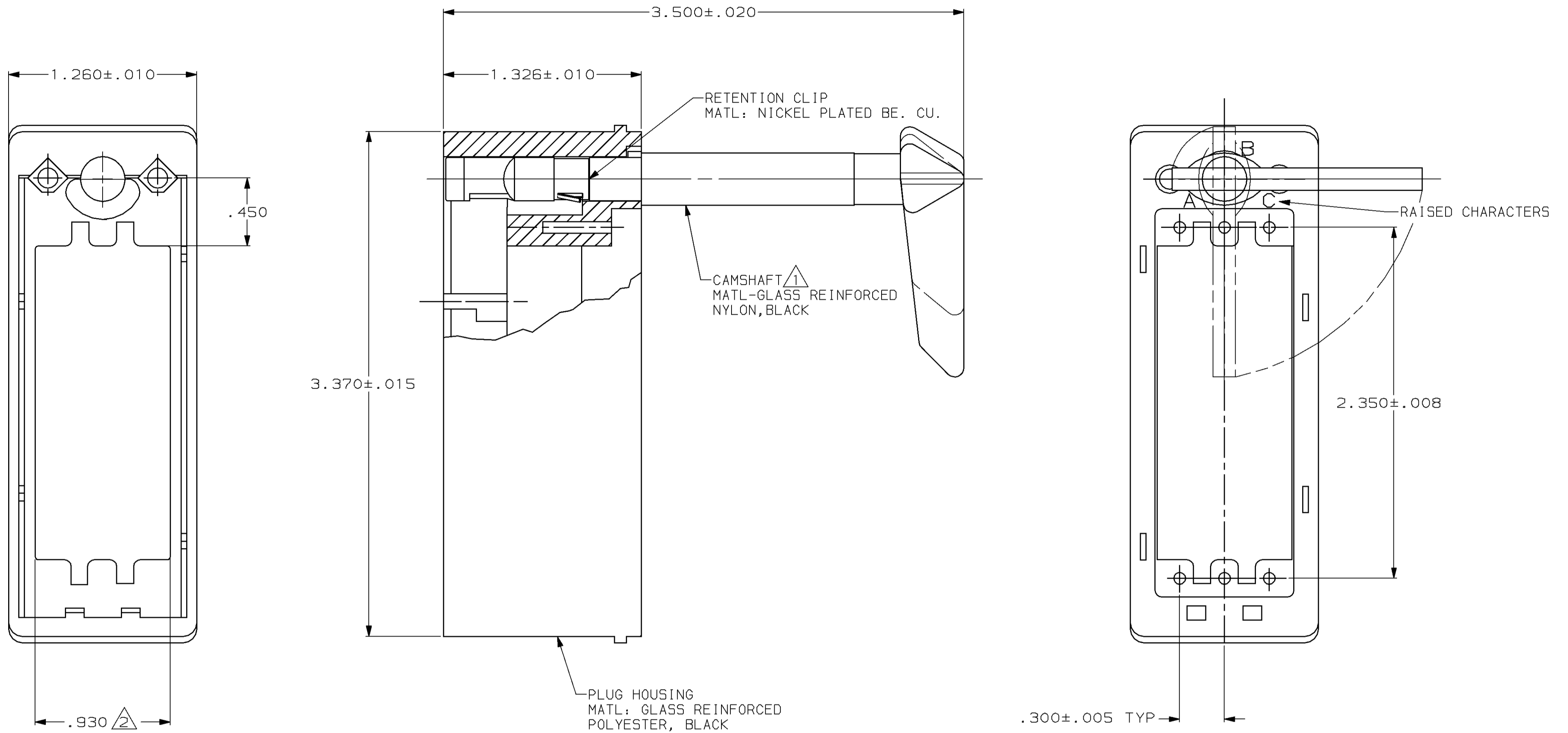


THIS DRAWING IS UNPUBLISHED. RELEASED FOR PUBLICATION
 BY AMP INCORPORATED. ALL RIGHTS RESERVED.

LOC	DTST	REVISIONS			
P	LTR	DESCRIPTION	DATE	OWN	APVD
DF	EO	M	REDRAW PER 0600-5102-96	03-14-96	JB DBM



- $\triangle 1$ CAMSHAFT SHOWN ASSEMBLED, PACKAGED UNASSEMBLED,
- $\triangle 2$ APPLIES TO MIDDLE AND ENDS OF PRODUCT
- $\triangle 3$ AS SHOWN EXCEPT WITHOUT CAMSHAFT.
- $\triangle 4$ SAME AS -1 EXCEPT GENERAL ELECTRIC PART NO. (218A4550P1) STAMPED ON KIT BAG.
- $\triangle 5$ SAME AS -3 EXCEPT: USES SHORT HANDLED CAM SHAFT.
- $\triangle 6$ SAME AS -1 EXCEPT SPECIAL KEYWAY.

OBSOLETE	$\triangle 6$	206527-5
OBSOLETE	$\triangle 5$	206527-4
OBSOLETE	$\triangle 4$	206527-3
	$\triangle 3$	206527-2
	-	206527-1
REMARKS		PART NUMBER

<small>THIS DRAWING IS A CONTROLLED DOCUMENT FOR AMP INCORPORATED. IT IS SUBJECT TO CHANGE AND THE CONTROLLING ENGINEERING ORGANIZATION SHOULD BE CONTACTED FOR THE LATEST REVISION.</small>		DWN J.A.Baker 03-13-96 CHK D.MUMMEY 03-14-96 APVD D.MUMMEY 03-14-96 PRODUCT SPEC - APPLICATION SPEC - WEIGHT - CUSTOMER DRAWING	AMP AMP Incorporated Harrisburg, PA 17105-3608 PLUG KIT, ZERO ENTRY SIZE I (3,40 POS. MODULES) STANDARD SIZE A2 CAGE CODE 00779 DRAWING NO. C=206527 SCALE 2:1 SHEET 1 OF 1 REV M
DIMENSIONS: in 	TOLERANCES UNLESS OTHERWISE SPECIFIED: 0 PLC ±- 1 PLC ±- 2 PLC ±- 3 PLC ±- 4 PLC ±- ANGLES ±- FINISH -		

单击下面可查看定价，库存，交付和生命周期等信息

[>>TE Connectivity\(泰科\)](#)