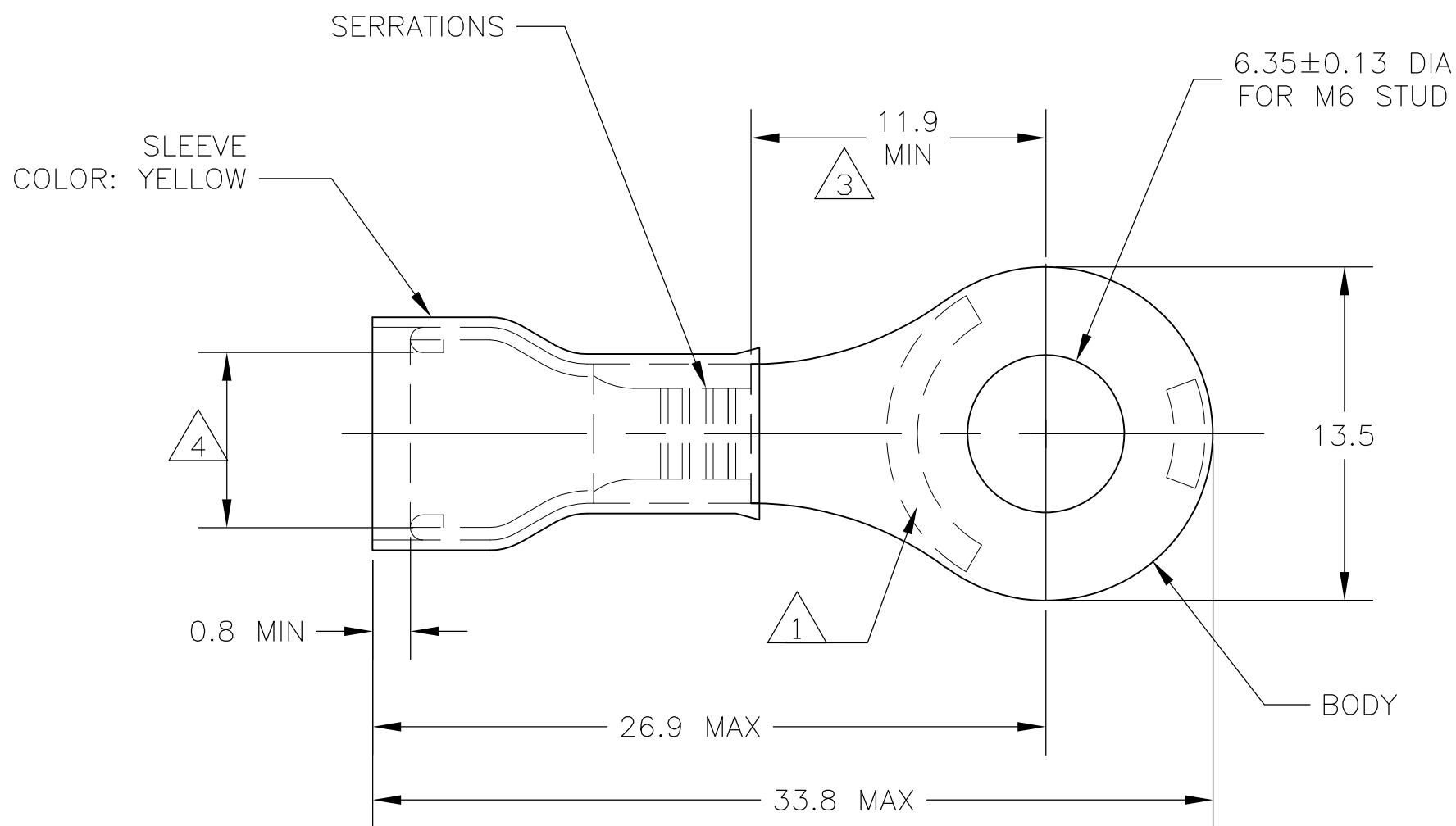


THIS DRAWING IS UNPUBLISHED. RELEASED FOR PUBLICATION  
 © COPYRIGHT BY TYCO ELECTRONICS CORPORATION. ALL RIGHTS RESERVED.

| LOC | DIST | REVISIONS |     |                       |         |     |      |
|-----|------|-----------|-----|-----------------------|---------|-----|------|
| G   | 14   | P         | LTR | DESCRIPTION           | DATE    | DWN | APVD |
|     |      |           | F1  | REV PER ECR 07-015095 | 25JUN07 | JR  | TM   |



- 1 STAMP "AMP 12-10\*", LOCATION APPROX AS SHOWN.
- 2 TONGUE THICKNESS IS 1.0±0.05
- 3 APPLIES TO EDGE OF METAL WIRE BARREL TO CENTER OF STUD HOLE.
- 4 WIRE INSULATION DIA RANGE 3.8-6.4
- 5 BODY - COPPER PER ASTM B-152 SLEEVE - COPPER PER ASTM B-152 INSULATION - NYLON
- 6 BODY - TIN PL PER ASTM B-545 SLEEVE - TIN PL PER ASTM B-545 INSULATION - COLOR - YELLOW
- 7 105°C MAX OPERATING TEMPERATURE.
- 8 300 VOLT MAX
- 9 2.62-6.64mm<sup>2</sup> [5,180 - 13,100 CMA] SOLID OR STRANDED

|     |              |         |
|-----|--------------|---------|
| 500 | LOOSE PIECE  | 130205  |
| QTY | PACKAGE TYPE | PART NO |

|  |              |                                  |   |                    |
|--|--------------|----------------------------------|---|--------------------|
| THIS DRAWING IS A CONTROLLED DOCUMENT.   |              | DWN<br>jr_ruth<br>10APR07        | Tyco Electronics Corporation<br>Harrisburg, PA 17105-3608 |                    |
| DIMENSIONS:<br>mm INCHES   |              | CHK<br>T MICHIELUTTI<br>10APR07  | NAME<br>TERMINAL RING TONGUE,<br>PIDG, WIRE SIZE 12-10    |                    |
| TOLERANCES UNLESS OTHERWISE SPECIFIED:<br>0 PLC ± -<br>1 PLC ± 0.2<br>2 PLC ± -<br>3 PLC ± -<br>4 PLC ± -<br>ANGLES ± 5° |              | APVD<br>T MICHIELUTTI<br>10APR07 | PRODUCT SPEC<br>-<br>APPLICATION SPEC<br>-                |                    |
| MATERIAL<br>-5   | FINISH<br>-6 | WEIGHT<br>-                      | SIZE<br>A3  | CAGE CODE<br>00779 |
| CUSTOMER DRAWING   |              |                                  | DRAWING NO<br>G-130205                                    | RESTRICTED TO<br>- |
| SCALE<br>4:1   |              |                                  | SHEET<br>1 OF 1   | REV<br>F1          |

单击下面可查看定价，库存，交付和生命周期等信息

[>>TE Connectivity\(泰科\)](#)