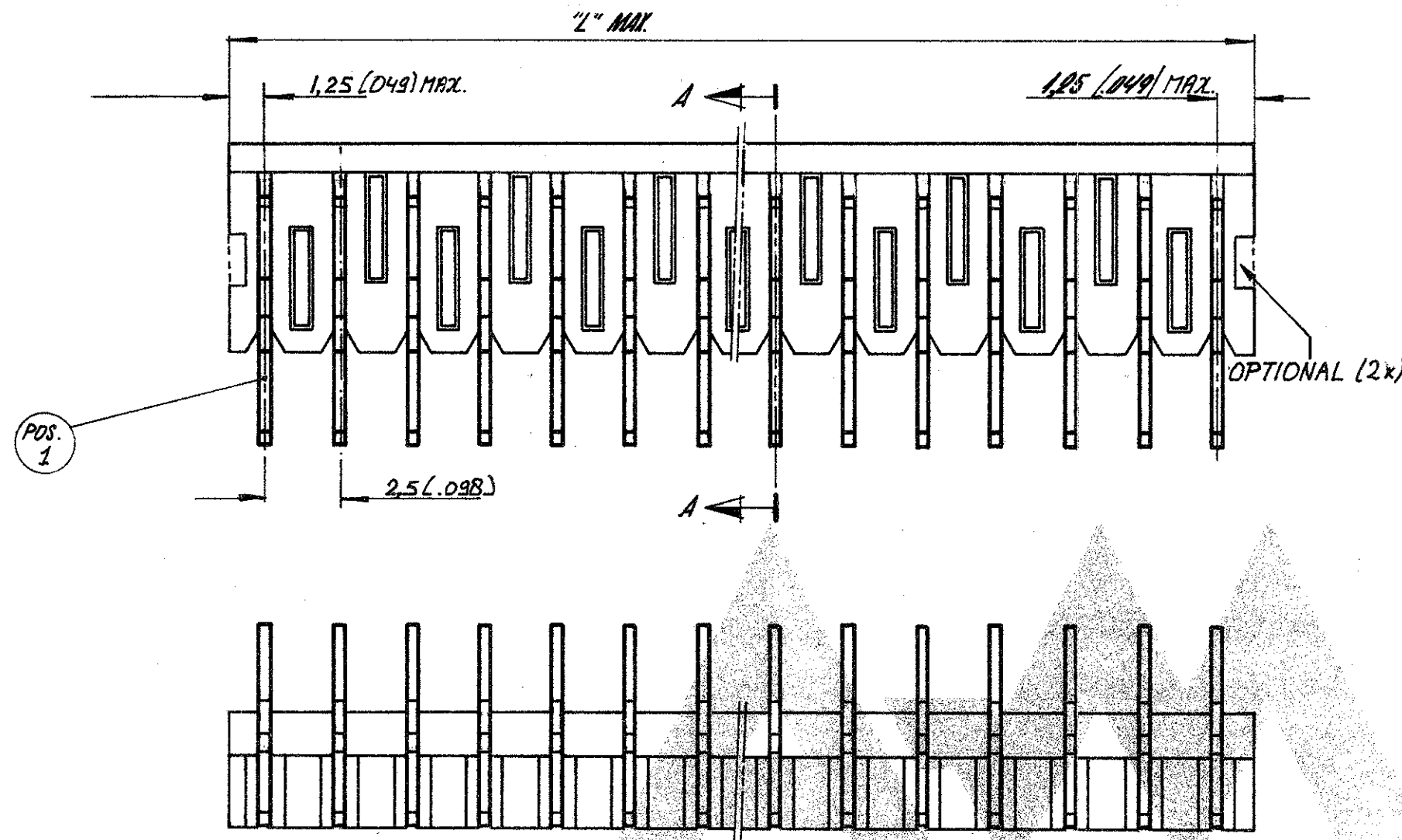


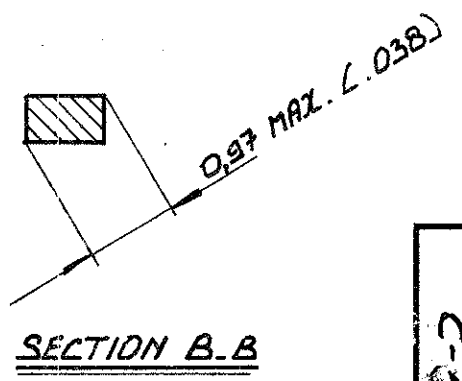
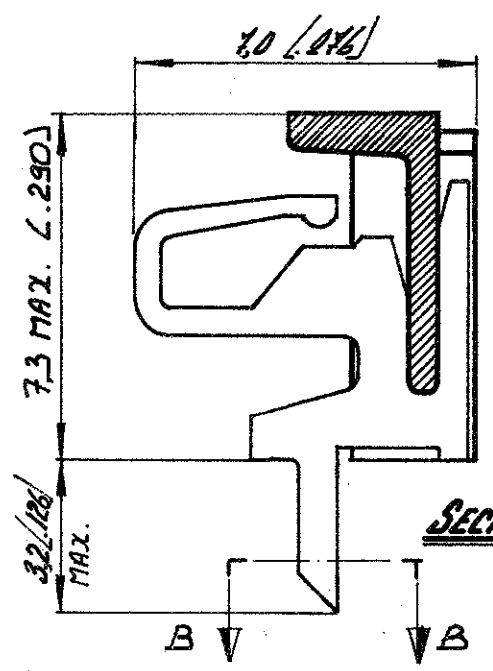
DRAWING MADE IN AMERICAN PROJECTION



	ORDER NUMBER	NUMBER OF POSITIONS	"L" MAX.	
			MM.	INCH.
	5164897-2	2	5,0	.197
1 OBSOLETE	-3	3	7,5	.295
	-4	4	10,0	.394
	-5	5	12,5	.492
1 OBSOLETE	-6	6	15,0	.591
	-7	7	17,5	.689
1 OBSOLETE	-8	8	20,0	.787
	-9	9	22,5	.886
	-10	10	25,0	.984
	-11	11	27,5	1.083
	-12	12	30,0	1.181
	-13	13	32,5	1.280
	-14	14	35,0	1.378
	-15	15	37,5	1.476
	-16	16	40,0	1.575
	-17	17	42,5	1.673
-18	18	45,0	1.772	
-19	19	47,5	1.870	
2-5164897-0	20	50,0	1.969	

MATERIAL: HOUSING: P.C., 90% GLASS FILLED.
 CONTACT: BRASS
 PLATING: TIN OVER NICKEL BARRIER

1 OBSOLETE PARTS: OBSOLETE CIS STREAMLINING PER D.RENAUD/D.SINISI



SEE TABLE.	SEE ABOVE.	SEE ABOVE.
ORDER NO.	MATERIAL	PLATING
CUSTOMER COPY FOR REFERENCE ONLY		
DR R. Coolan	DATE 01 MAR 05	©1980 BY AMP-HOLLAND N.V. ALL RIGHTS RESERVED A-MP PRODUCTS COVERED BY PATENTS AND/OR PATENTS PENDING.
CHK	DATE	
DE	DATE	WIRE-RANGE
APP	DATE	INSUL-RANGE
		FIRST USED
	SCALE N.T.S.	SIZE B
		NO C-5164897
		REV A1
NAME 2-20 POS. MALE HEADER ASS'Y. RIGHT ANGLED FOR MINI MATCH INTERCONNECTION SYSTEM, PITCH: 2.5 mm.		

A1	ECO-09-026495	28NOV09	KK	AEG
ltr	rev. rec.	date dwn	apvd	

NUMBER C-5164897

单击下面可查看定价，库存，交付和生命周期等信息

[>>TE Connectivity\(泰科\)](#)