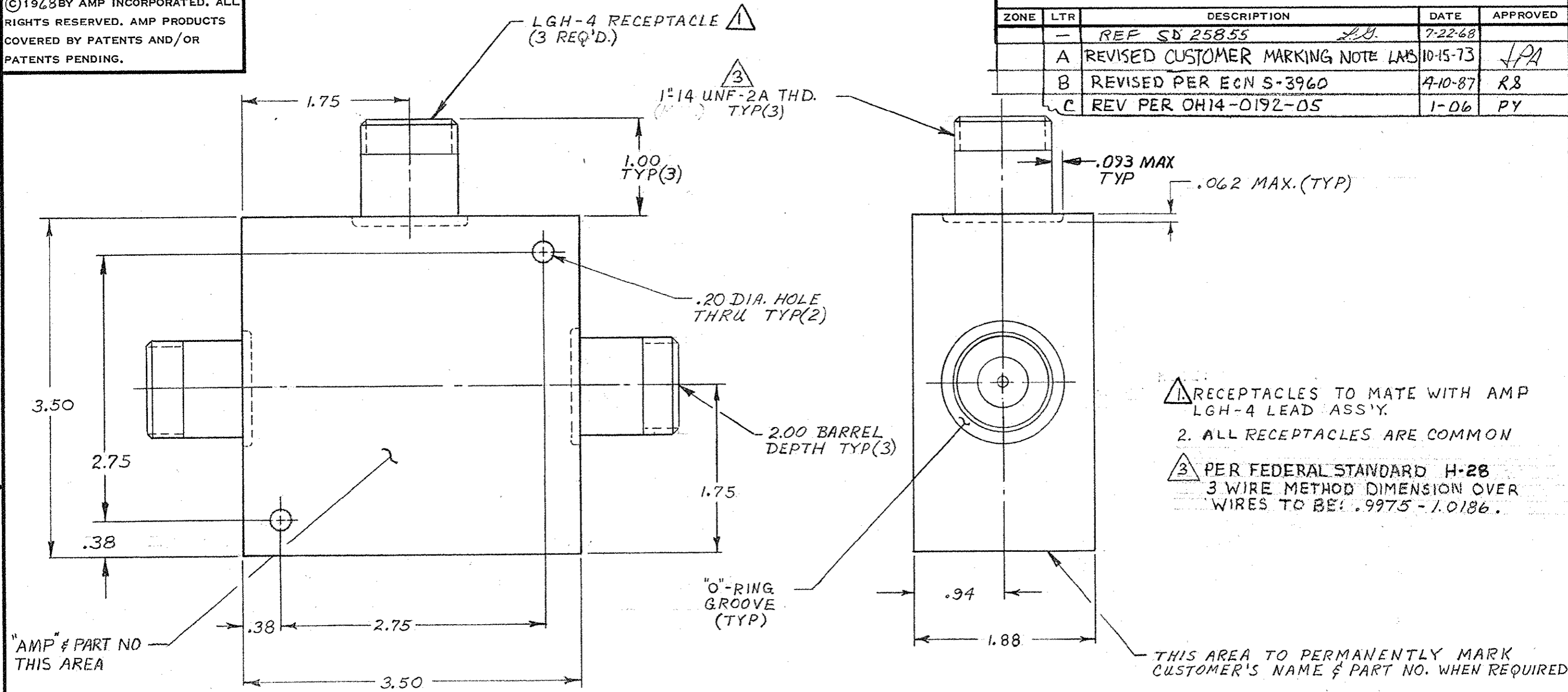


DRAWING MADE IN AMERICAN PROJECTION

© 1968 BY AMP INCORPORATED. ALL RIGHTS RESERVED. AMP PRODUCTS COVERED BY PATENTS AND/OR PATENTS PENDING.

REVISIONS				
ZONE	LTR	DESCRIPTION	DATE	APPROVED
	-	REF SD 25855	7-22-68	
A		REVISED CUSTOMER MARKING NOTE LMS	10-15-73	JPA
B		REVISED PER ECN S-3960	4-10-87	RS
C		REV PER OH14-0192-05	1-06	PY



- 1. RECEPTACLES TO MATE WITH AMP LGH-4 LEAD ASS'Y.
- 2. ALL RECEPTACLES ARE COMMON
- 3. PER FEDERAL STANDARD H-28 WIRE METHOD DIMENSION OVER WIRES TO BE: .9975 - 1.0186.

"AMP" & PART NO THIS AREA

QTY REQD	QTY REQD	ITEM NO.	DWG SIZE	PART OR IDENTIFYING NO.	NOMENCLATURE OR DESCRIPTION	SYMBOL
-2	-1					

PART NO	DESCRIPTION
5-850554-1	AS SHOWN, TIN PLATED PINS
850554-1	AS SHOWN, TIN-LEAD PLATED PINS

NEXT ASSY	FINAL ASSY	NEXT ASSY	USED ON

UNLESS OTHERWISE SPECIFIED:
DIMENSIONS ARE IN INCHES
TOLERANCES
.00 ± .04 ANGLES
.000 ± .015

CONTRACT NO.
DR *L. J. Gib* 7-22-68
CHK
APPD
APPD
DSGN APPD *J. W. Shaw* 7-25-68
OTHER APPD

MATERIAL:
EPOXY

FINISH:
NATURAL

AMP AMP INCORPORATED
CAPITRON DIVISION
ELIZABETHTOWN, PENNSYLVANIA

NAME "T" CONNECTOR
LGH-4

SIZE **B** CODE IDENT NO. 00779 NUMBER 850554

SCALE *H* WT SHEET 1 OF 1

单击下面可查看定价，库存，交付和生命周期等信息

[>>TE Connectivity\(泰科\)](#)