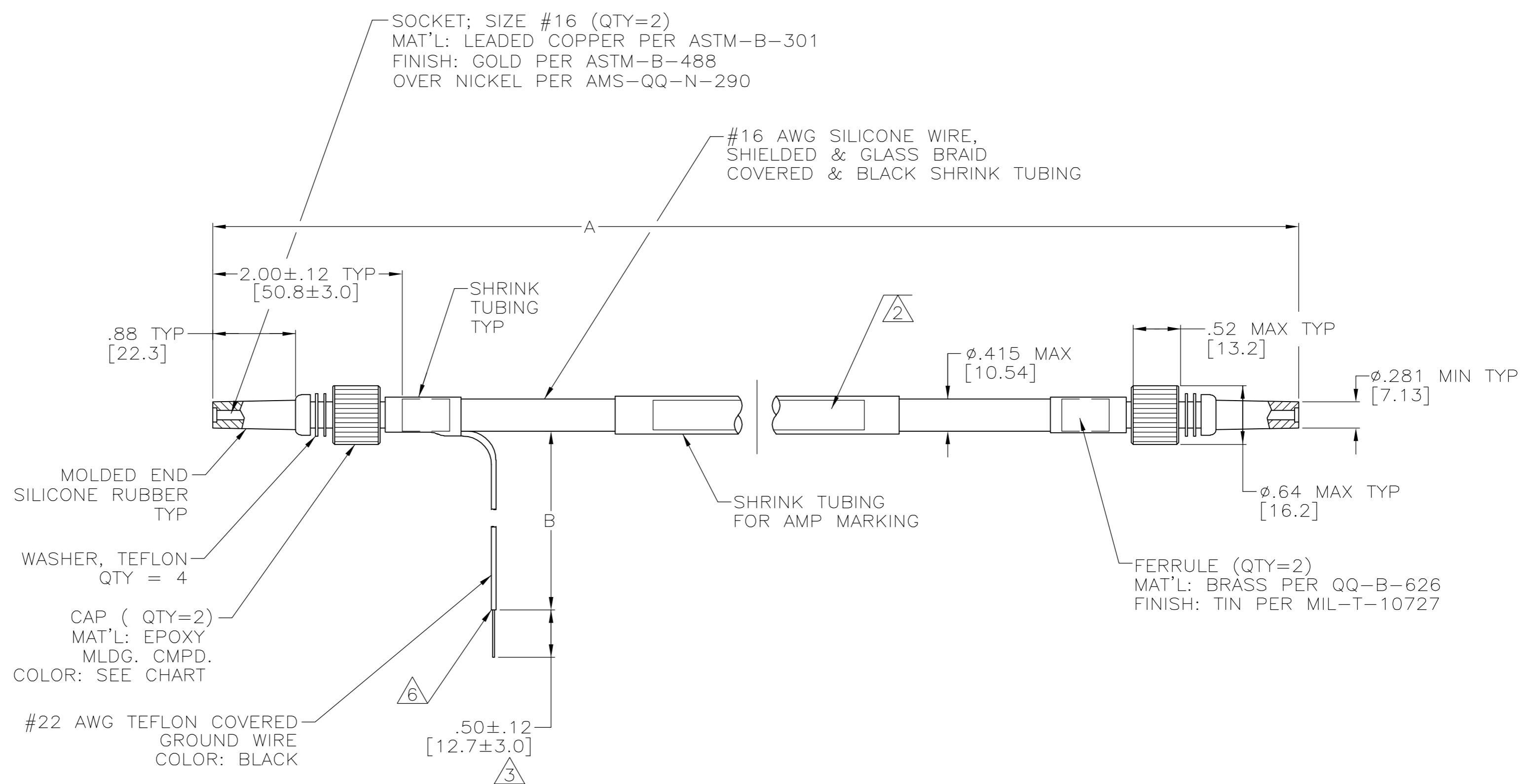


THIS DRAWING IS UNPUBLISHED.		RELEASED FOR PUBLICATION		- .N/A .	
COPYRIGHT N/A BY TYCO ELECTRONICS CORPORATION.		ALL RIGHTS RESERVED.			
PART NO.	A $\triangle 1$	B $\triangle 1$	CAP COLOR	REMARKS	
447391-1	19.00 [482.6]	6.00 [152.4]	GREEN	$\triangle 3$	
447391-2	27.00 [685.8]	6.00 [152.4]	GREEN	$\triangle 3$	
447391-3	35.00 [889.0]	6.00 [152.4]	GREEN	$\triangle 3$	
447391-4	42.00 [1066.8]	6.00 [152.4]	GREEN	$\triangle 3$	
447391-5	51.00 [1295.4]	6.00 [152.4]	GREEN	$\triangle 3$	
447391-6	59.00 [1498.6]	6.00 [152.4]	GREEN	$\triangle 3$	
447391-7	67.00 [1701.8]	6.00 [152.4]	GREEN	$\triangle 3$	
5-447391-1	19.00 [482.6]	6.00 [152.4]	GREEN	$\triangle 6$	
5-447391-2	27.00 [685.8]	6.00 [152.4]	GREEN	$\triangle 6$	
5-447391-3	35.00 [889.0]	6.00 [152.4]	GREEN	$\triangle 6$	
5-447391-4	42.00 [1066.8]	6.00 [152.4]	GREEN	$\triangle 6$	
5-447391-5	51.00 [1295.4]	6.00 [152.4]	GREEN	$\triangle 6$	
5-447391-6	59.00 [1498.6]	6.00 [152.4]	GREEN	$\triangle 6$	
5-447391-7	67.00 [1701.8]	6.00 [152.4]	GREEN	$\triangle 6$	

LOC	DIST	REVISIONS					
DF	S0	P	LTR	DESCRIPTION	DATE	DWN	APVD
		F		REV PER ECO-05-002357	08-05	AA	DE

- $\triangle 1$ TOLERANCE OF LEAD LENGTH:
UP TO 24 INCHES [609.6] = ± 1.2 [± 3.0]
24 INCHES [609.6] & UP = $\pm 1\%$
- $\triangle 2$ MARKED PER MIL-STD-130.
- $\triangle 3$ PIGTAIL IS SOLDER DIPPED.
- 4. TO MATE WITH AMP LGH-1
RECEPTACLE WITH .88 [22.3] BARREL DEPTH.
- 5. OPERATING VOLTAGE: 20 KVDC AT 0 TO 70,000 FEET,
-55°C TO 125°C.
- $\triangle 6$ INSULATION CUT, BUT NOT REMOVED.



THIS DRAWING IS A CONTROLLED DOCUMENT.		DWN	T.SHUEY	24-SEP-90	 Tyco Electronics Corporation Harrisburg, Pa 17105-3608
DIMENSIONS:		CHK	D.EABY	25-SEP-90	
INCHES [mm]		APVD	D.EABY	25-SEP-90	
		PRODUCT SPEC			
TOLERANCES UNLESS OTHERWISE SPECIFIED:		APPLICATION SPEC			
0 PLC ± -		WEIGHT	-		
1 PLC ± -		SCALE	1:1		
2 PLC ± .02 [0.5]		SHEET	1 OF 1		
3 PLC ± -		REV	F		
4 PLC ± -		MATERIAL SEE CALLOUTS FINISH SEE CALLOUTS SIZE A2 CAGE CODE 00779 DRAWING NO C=447391 RESTRICTED TO -			
ANGLES ± -		CUSTOMER DRAWING			
FINISH SEE CALLOUTS					

单击下面可查看定价，库存，交付和生命周期等信息

[>>TE Connectivity\(泰科\)](#)