

THIS DRAWING IS UNPUBLISHED.

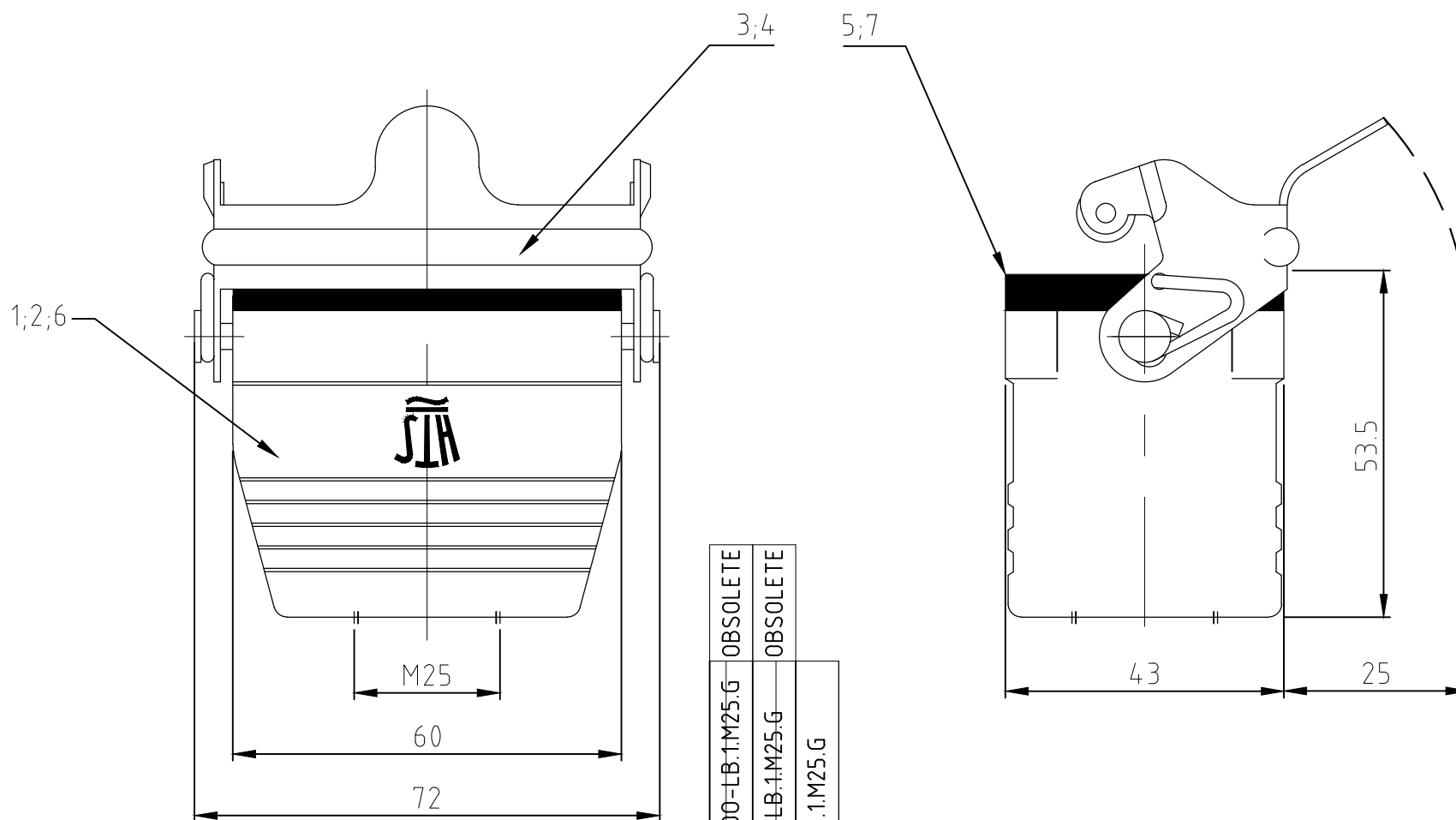
RELEASED FOR PUBLICATION

REVISIONS

© COPYRIGHT - TE Connectivity

ALL RIGHTS RESERVED.

P	LTR	DESCRIPTION	DATE	DWN	APVD
	A5	REVISED PER ECR-17-014013	08FEB2018	SRG	MKO



HB-EMV-6.KDO-LB.1.M25.G	OBSOLETE
HB-K-6.KDO-LB.1.M25.G	OBSOLETE
HB.6.KDO-LB.1.M25.G	

QTY	DESCRIPTION / BENENNUNG	MATERIAL	SURFACE / OBERFLÄCHE	COLOR / FARBE	ITEM NO. POS.	REMARKS / BEMERKUNGEN
1	Profildichtung/profile seal	Neoprene	leitfähig/conductive	schwarz/black	7	
1	Kupplungsgehäuse HB/cable-to-cable hood	Aluminium/ALU	SEE NOTE 2	grau/grey	6	
1	Profildichtung/profile seal	Neoprene	-	schwarz/black	5	
1	LB-Bügel/side clip	V2A/stainless steel	blank/even		4	
1	LB-Bügel/side clip	Stahl/steel	verzinkt/zink plated	blau/blue	3	
1	Kupplungsgehäuse HB-K/cable-to-cable hood	Aluminium/ALU	aluminiumoxid	schwarz/black	2	
1	Kupplungsgehäuse HB/cable-to-cable hood	Aluminium/ALU	-	grau/grey	1	

Bemerkungen:

- 1 Material: Gehäuse: Alu-Druckguß-Legierung
- 2 Oberfläche: Lackierung - grau
 - Aluminium-oxid-Schicht + Lackierung schwarz
 - chromitAL TCP passivation + Lackierung schwarz
- 3 Lackierung im Gehäuseinnere ist nicht notwendig

Notes:

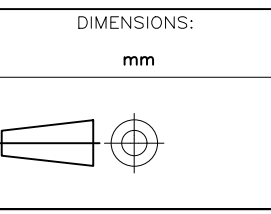
- 1 Material: Housing: aluminium diecasting alloy
- 2 Surface: Varnisch- grey
 - aluminium oxid + varnish black
 - chromitAL TCP passivation + varnish black
- 3 Varnish on the inside not necessarily

THIS DRAWING IS A CONTROLLED DOCUMENT.

DWN SCHNEIDER 10.06.2003
 CHK SCHNEIDER 10.06.2003
 APVD -
 PRODUCT SPEC -
 APPLICATION SPEC -
 WEIGHT -



CABLE-TO-CABLE HOOD
 KUPPLUNGSGEHAUSE ASSY HB.6.KDO-LB.1.M25.G



TOLERANCES UNLESS OTHERWISE SPECIFIED:
 n. ISO 8015
 n. ISO 2768 - mH - E
 n. DIN 16901 - 14.0

0 PLC ± -
 1 PLC ± ±
 2 PLC ± ±
 3 PLC ± ±
 4 PLC ± ±
 ANGLES ± -

MATERIAL 1
 FINISH 2

SIZE A3 CAGE CODE 00779 DRAWING NO C=1106417 RESTRICTED TO -

CUSTOMER DRAWING SCALE 1:1 SHEET 1 OF 1 REV A5

单击下面可查看定价，库存，交付和生命周期等信息

[>>TE Connectivity\(泰科\)](#)