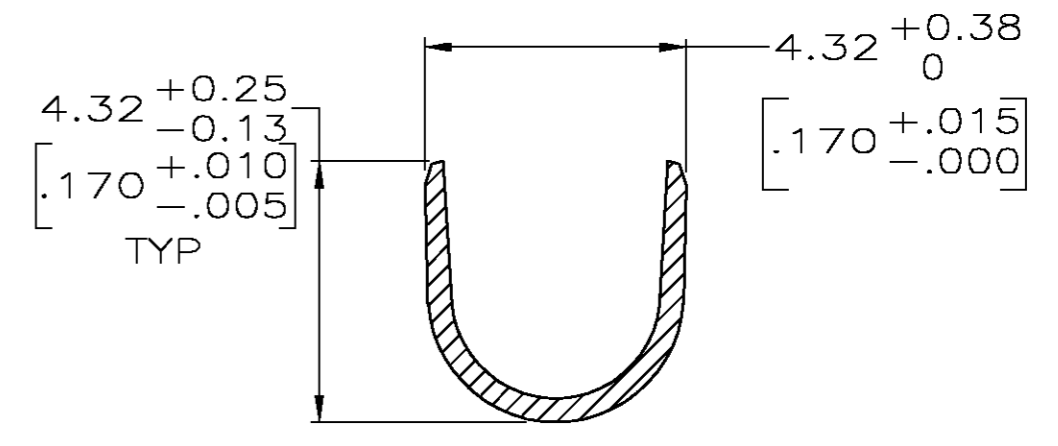
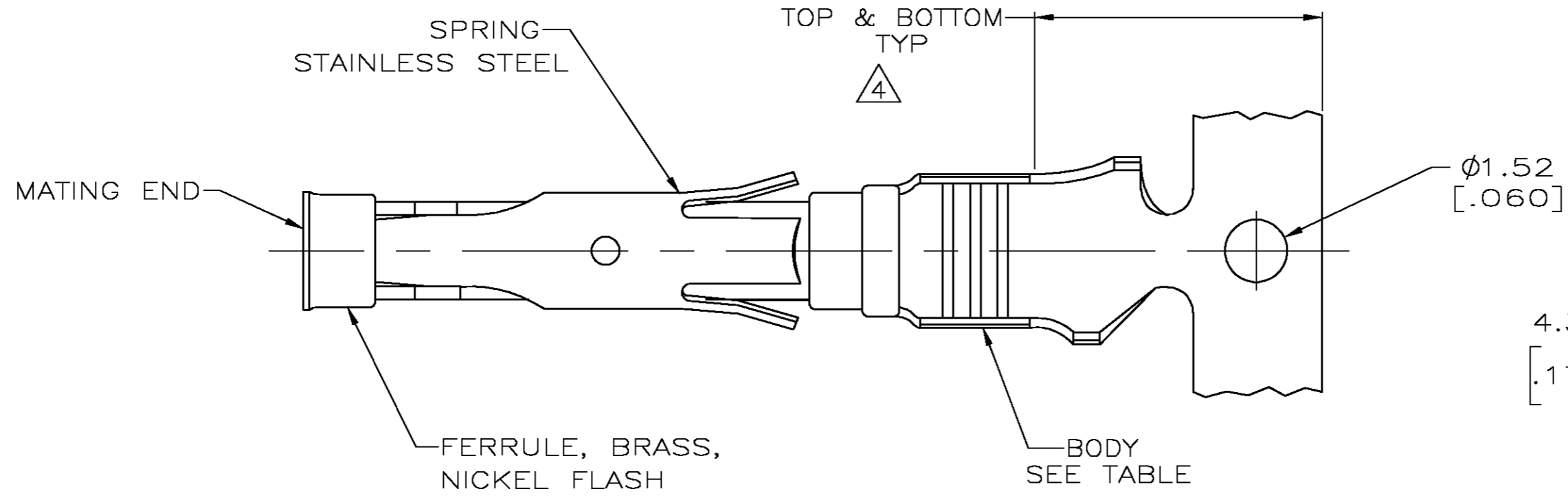
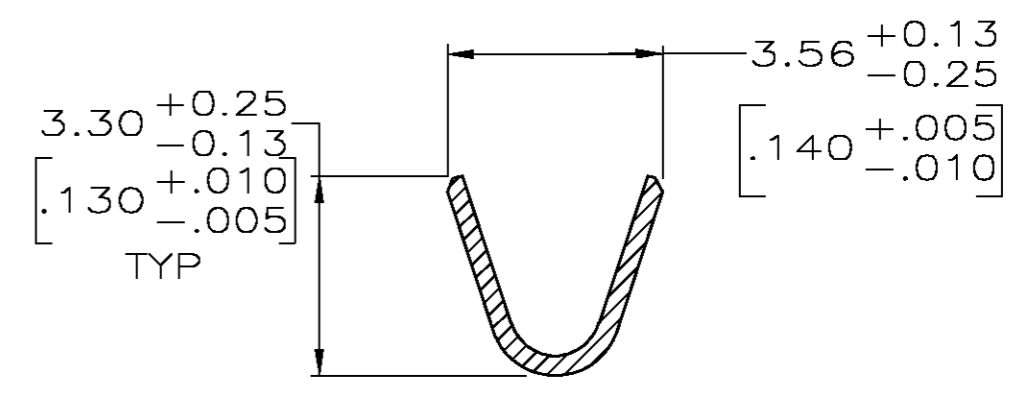
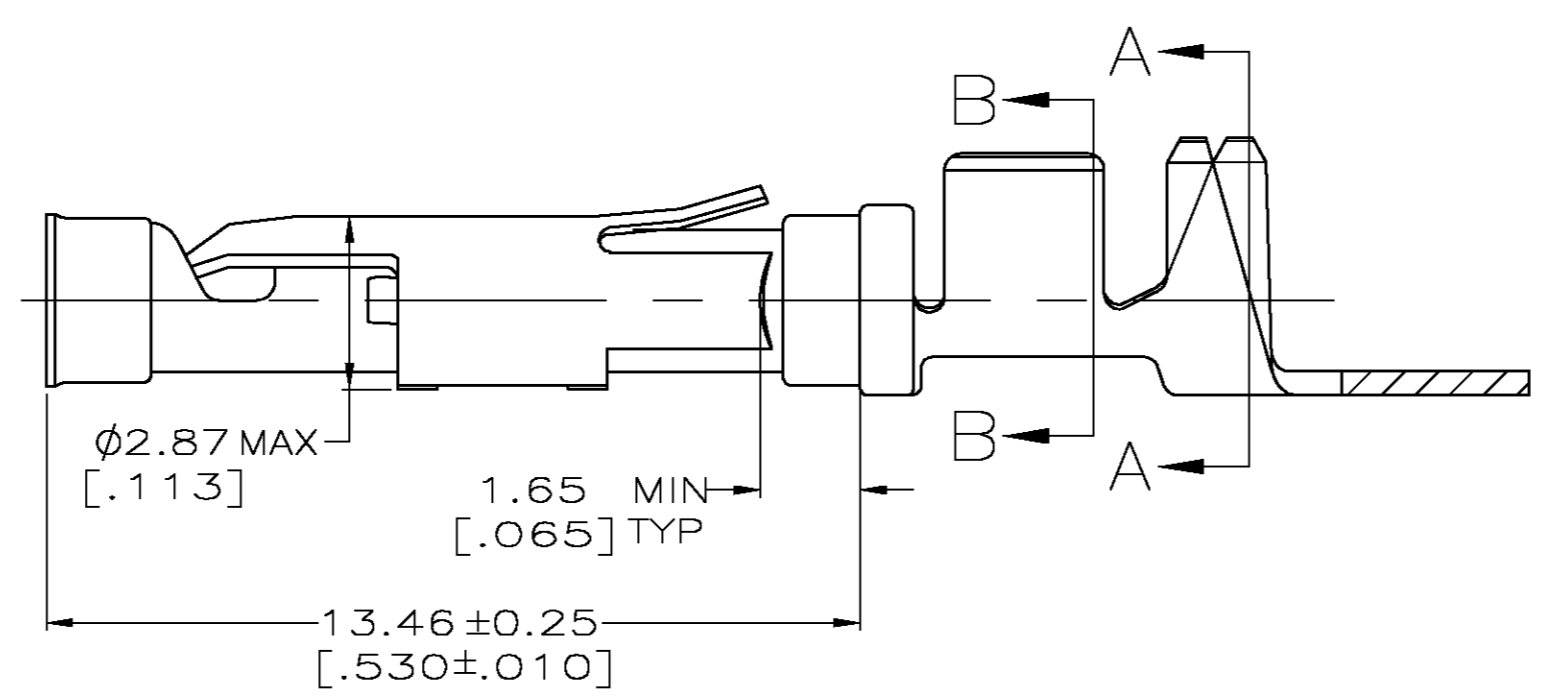
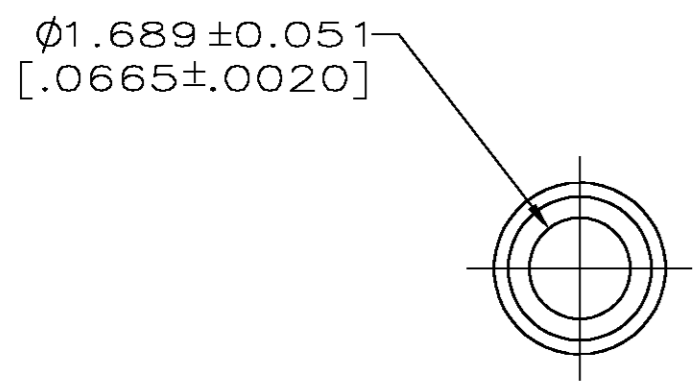


THIS DRAWING IS UNPUBLISHED. RELEASED FOR PUBLICATION
 © COPYRIGHT BY TYCO ELECTRONICS CORPORATION. ALL RIGHTS RESERVED.

LOC		DIST		REVISIONS			
P	LTR	DESCRIPTION		DATE	DWN	APVD	
FT	0	W		REVISED PER 0G3B-0956-04	11/19/04	SS	GS



SECTION A-A



SECTION B-B

- 1. 0.51µm [.000020] MIN GOLD PER MIL-G-45204 ON MATING END FOR A LENGTH OF 5.08 [.200] MIN WITH GOLD FLASH ON THE REMAINDER OVER 0.76µm [.000030] MIN NICKEL PER QQ-N-290.
- 2. 1.27µm [.000050] MIN TIN-LEAD PER MIL-T-10727 OVER 0.76µm [.000030] MIN NICKEL PER QQ-N-290.
- 3. 0.76µm [.000030] MIN GOLD PER MIL-G-45204 ON MATING END FOR A LENGTH OF 5.08 [.200] MIN WITH GOLD FLASH ON THE REMAINDER OVER 0.76µm [.000030] MIN NICKEL PER QQ-N-290.
- 4. GOLD PLATING NEED NOT APPEAR IN THIS AREA.
- 5. REVERSE REELED FOR MINI-APPLICATOR.
- 6. WIRE RANGE 14-18 AWG. INSULATION RANGE 2.79[.110]-3.81[.150].
- 7. 0.38µm [.000015] MIN GOLD PER MIL-G-45204 ON MATING END FOR A LENGTH OF 5.08 [.200] MIN, 1.27µm [.000050] MIN TIN-LEAD PER MIL-T-10727 FOR A LENGTH OF 5.69 [.224] MIN ON OPPOSITE END, BOTH OVER 1.27µm [.000050] MIN NICKEL PER QQ-N-290 ON ENTIRE CONTACT.
- 8. 1.27µm [.000050] MIN TIN PER MIL-T-10727 OVER 0.76µm [.000030] MIN NICKEL PER QQ-N-290.

8	BRASS	-	1-66598-4	
8	PHOSPHOR BRONZE	-	1-66598-3	
8	CU-NI ALLOY	1-66601-2	1-66598-2	
3	CU-NI ALLOY	1-66601-0	1-66598-1	
8	BRASS	-	1-66598-0	
8	BRASS	66601-9	66598-9	
OBSELETE	7	BRASS	66601-5	66598-8
2	BRASS	-	66598-7	
3	PHOSPHOR BRONZE	66601-4	66598-6	
OBSELETE	2	PHOSPHOR BRONZE	66601-3	66598-5
1	BRASS	-	66598-3	
3	BRASS	66601-2	66598-2	
2	BRASS	66601-1	66598-1	
8	BODY FINISH	BODY MATERIAL	LOOSE PIECE REF	PART NUMBER

THIS DRAWING IS A CONTROLLED DOCUMENT.

DWN: M. HOFFECKER 8-11-88
 CHK: J. McCLINTON 8-11-88

TYCO Electronics Tyco Electronics Corporation
 Harrisburg, PA 17105

NAME: SOCKET ASSEMBLY, .062, TYPE III+

SIZE: A2 CAGE CODE: 00779 DRAWING NO: C=66598 RESTRICTED TO: -

MATERIAL: SEE CALLOUTS FINISH: SEE CALLOUTS WEIGHT: - SCALE: 8:1 SHEET: 1 OF 1 REV: W

CUSTOMER DRAWING

单击下面可查看定价，库存，交付和生命周期等信息

[>>TE Connectivity\(泰科\)](#)