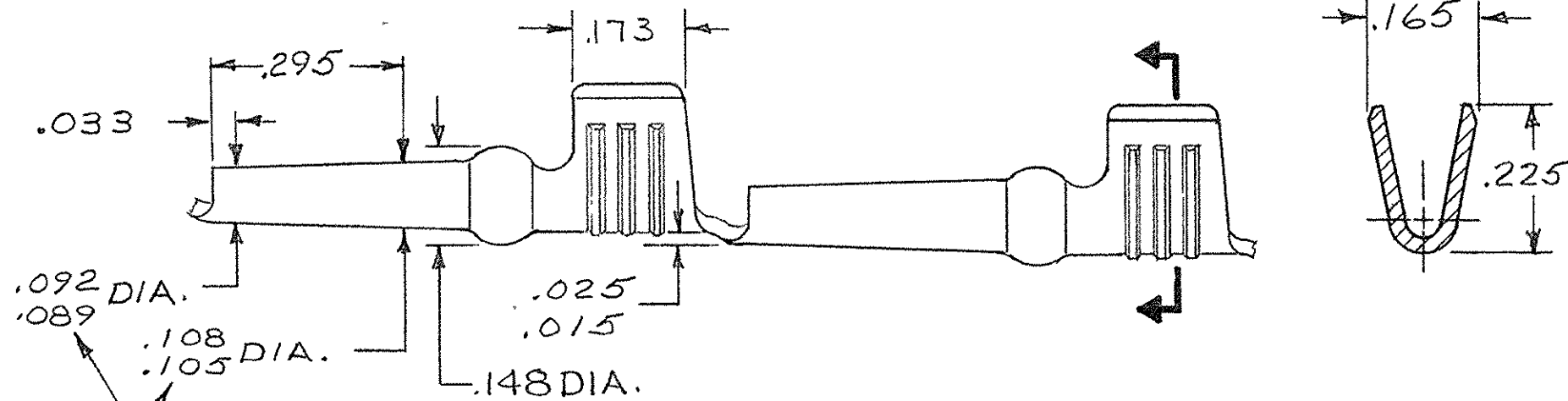
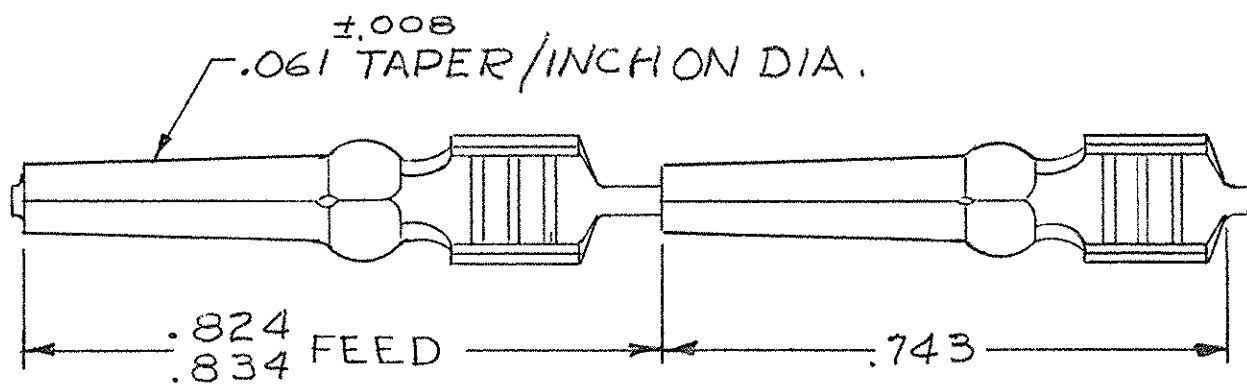


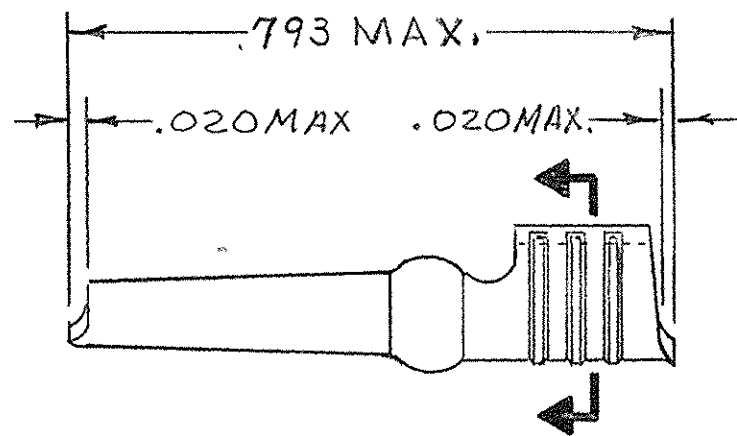
© 1960 BY AMP INCORPORATED. ALL RIGHTS RESERVED. AMP PRODUCTS COVERED BY PATENTS AND/OR PATENTS PENDING. APPROVED PER GOVT CONTRACT NO.

NUMBER 42107

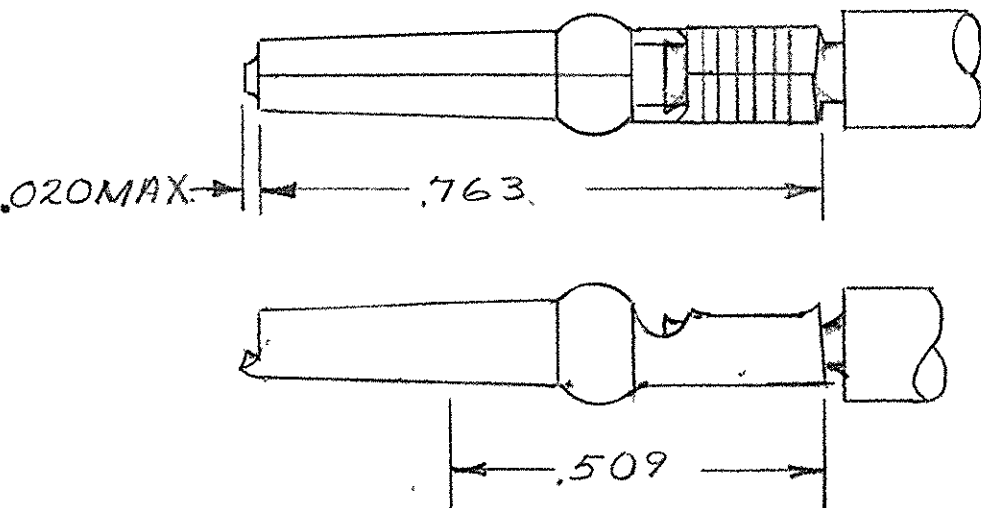


OUT OF ROUND NOT TO EXCEED TOLERANCE ON DIMENSION.

STRIP



LOOSE PIECE



MAX. INSTALLED EXTENSION CRIMPED VERSION

| REVISIONS | | | | |
|-----------|------|---|-----------|-----------------|
| SYM | ZONE | DESCRIPTION | DATE | APPROVAL |
| E | | REVISED & REDRAWN | 7-981 | 8-8-63 J.C. |
| F | | OBSOLETE 42107-1 & 42279-4 | 2102 DR | 5-11-69 D.H. |
| G | | PRINT DIST WAS "39" LOC WAS "AB" | 3347 | 10-72 CO |
| H | | REVISED WORDING IN TABLE & NAME | 468 | 1-13-77 DJA |
| J | | .0001 BRIGHT TIN WAS .0002 TIN ON 42107-2 | EA 1049 | 1-3-79 DJH |
| K | | REVISED PLATING | EA 1515 | 8-1-80 DS |
| L | | BRIGHT TIN-LEAD WAS BRIGHT TIN | EA 1818 | 6-16-81 DS |
| M | | REVISED GOLD PLATING | EA 2139 | 6-16-82 DS |
| N | | .176 WAS .175, REVISED PICTURE | ECN S3056 | 4-29-85 JM |
| P | | OBS 42279-3 | ECN S3379 | 11-24-86 R.R. |
| R | | OBS 42107-4 | ECN S3733 | 4-14-87 R.R. |
| | | OBS 42279-2 | ECN S3940 | 4-28-87 R.R. |
| S | | REVISED PER OH14-0139-05 | | 1-25-06 PY R.R. |

⚠ OBSOLETE PART NO.

| | | | | | | | |
|----------|----------------|----------------------|-----------|--------------------------------|-------------|-----------|--------------------|
| | 5-42107-2 | 5-42279-1 | 12-14 | .0000 MATTE TIN | 380306-8 | 47689 | #12-113 #14-102 |
| OBSOLETE | 42107-1 | 42279-4 | 12-14 | PLAIN | 380306-8 | 47689 | #12-113 #14-102 |
| OBSOLETE | 42107-4 | 42279-3 | 12-14 | .00003 GOLD OVER .00005 NICKEL | 380306-8 | 47689 | #12-113 #14-102 |
| | 42107-3 | 42279-2 | 12-14 | .0002 SILVER | 380306-8 | 47689 | #12-113 #14-102 |
| | 42107-2 | 42279-1 | 12-14 | .0001 BRIGHT TIN-LEAD | 380306-8 | 47689 | #12-113 #14-102 |
| | STRIP PART NO. | LOOSE PIECE PART NO. | WIRE SIZE | FINISH | INSERT TOOL | HAND TOOL | CRIMP HEIGHT |

| | | | | | |
|---|----------|----------|-------------------------------|------------------------|--------------|
| M 3 | INFO | QTY REQD | NOMENCLATURE OR DESCRIPTION | PART OR IDENTIFYING NO | |
| S | 12 | | | | |
| LIST OF MATERIALS OR PARTS LIST | | | | | |
| UNLESS OTHERWISE SPECIFIED DIMENSIONS ARE IN INCHES TOLERANCES ON | | | SIGNATURE | | DATE |
| FRACTIONS | DECIMALS | ANGLES | DR <i>J. Kaufman</i> | | 8-12-63 |
| ± | ± | ± | CHK <i>J. Kaufman</i> | | 8-18-63 |
| MATERIAL | | | DSGN ENGR <i>R.G. Hollett</i> | | 8-14-63 |
| .025 COML. BRASS | | | APPD <i>J. Kaufman</i> | | 8/14/63 |
| HEAT TREAT | | | DSGN APPD | | |
| FINISH | | | OTHER APPD | | |
| SEE TABLE | | | CODE IDENT NO | | SIZE |
| | | | 00779 | | C |
| | | | NUMBER | | 42107 |
| SCALE 4-1 | | | WT | | CALC |
| | | | ACTUAL | | SHEET 1 OF 1 |

AMP AMP INCORPORATED HARRISBURG, PENNSYLVANIA

PIN, TAPER, 88 SERIES, NON-INSULATION SUPPORT

单击下面可查看定价，库存，交付和生命周期等信息

[>>TE Connectivity\(泰科\)](#)