

THIS DRAWING IS UNPUBLISHED.

RELEASED FOR PUBLICATION

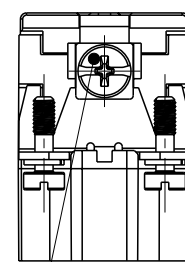
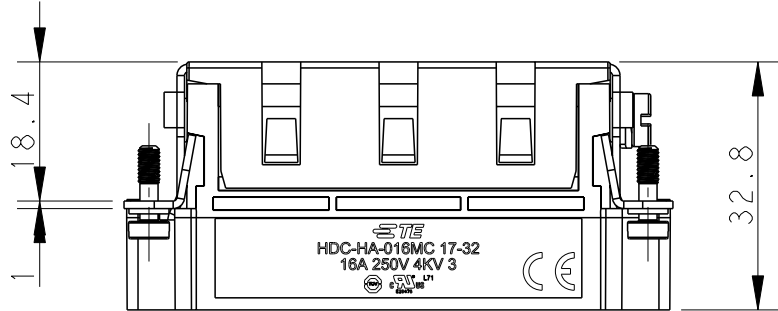
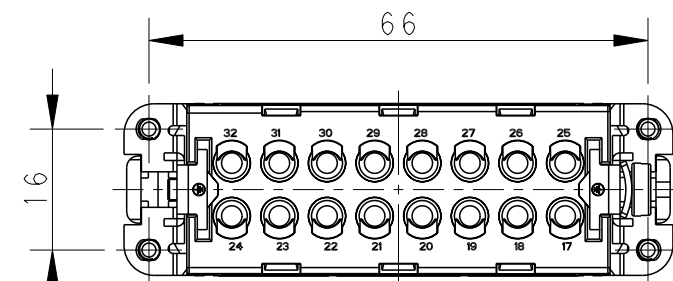
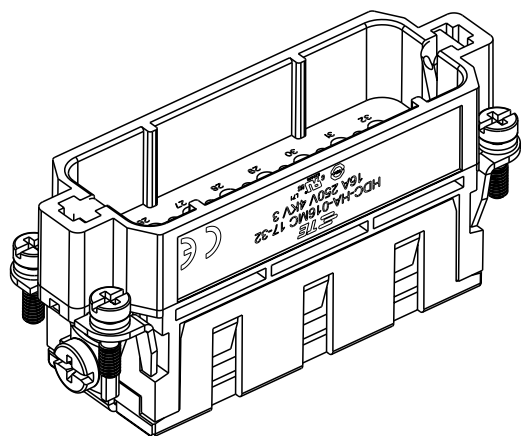
20

© COPYRIGHT 20 BY -

ALL RIGHTS RESERVED.

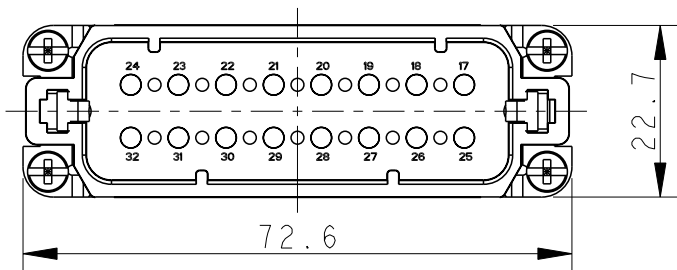
REVISIONS

P	LTR	DESCRIPTION	DATE	DWN	APVD
	A	INITIAL	25Jan2015	DW	CW
	B	ECR-20-016101	09JUN2021	BS	CW

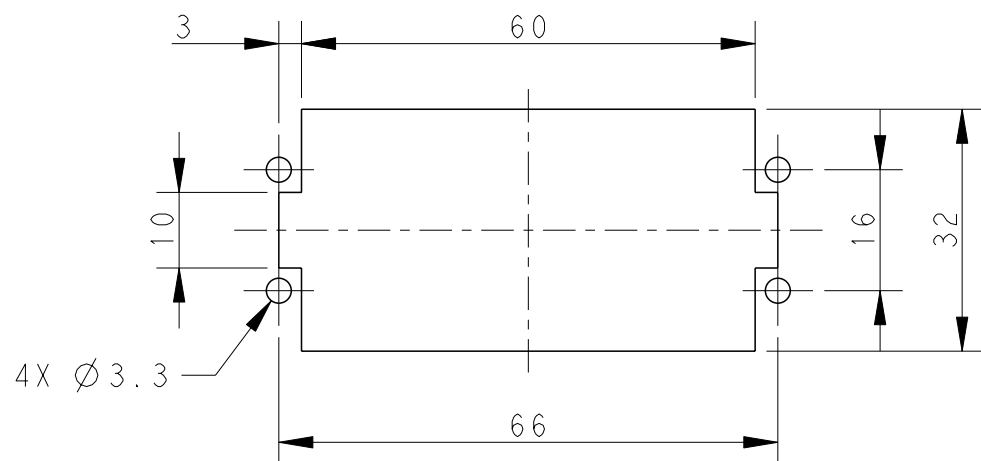


M4 SCREW
RECOMMENDED

4X M3 SCREW, RECOMMENDED TIGHTENING TORQUE 0.5Nm
TIGHTENING TORQUE 1.2Nm



PANEL CUT FOR INSERTS FOR USE
WITHOUT HOODS/ HOUSINGS



NOTES:

- TECHNICAL CHARACTERISTICS:
INSULATION MATERIAL: PC
RATED VOLTAGE: 250 V
RATED CURRENT: 16 A
INSULATION RESISTANCE: $\geq 400M\Omega$
RATED IMPULSE VOLTAGE: 4 KV
POLLUTION DEGREE: 3
FLAMMABILITY: UL94V-0
MATING CYCLES: 500 CYCLES
WIRE RANGE: 0.14-4 mm² (26-12 AWG)
CONTACT TYPE: CRIMP CONTACT
- CONTACT NEED TO BE ORDERED SEPARATELY.
(ORDER No. REFER TO DRAWING: T20300X10XX000)

注释:

- 技术参数:
绝缘材料: PC
额定电压: 250V
额定电流: 16A
绝缘电阻: $\geq 400M\Omega$
额定脉冲电压: 4 KV
污染等级: 3
阻燃等级: UL94V-0
插拔次数: 500次
接线范围: 0.14-4 mm² (26-12 AWG)
接线类型: 冷压接
- 端子需要单独订购.
(订货号参考图面: T20300X10XX000)

HA-016-MC 17-32	T2010324101-000
DESCRIPTION	PART NUMBER

THIS DRAWING IS A CONTROLLED DOCUMENT.		DWN	22Jan2015	 TE Connectivity	NAME	HA-016-MC 17-32	
DIMENSIONS:		CHK	22Jan2015				
mm		APVD	22Jan2015				
TOLERANCES UNLESS OTHERWISE SPECIFIED:		PRODUCT SPEC	108-137045				
0 PLC ±-		APPLICATION SPEC	114-137045	SIZE	CAGE CODE	DRAWING NO	RESTRICTED TO
1 PLC ±-		WEIGHT	-	A3	00779	T2010324101000	-
2 PLC ±-		Customer Drawing		SCALE	1:1	SHEET	1 OF 1
3 PLC ±-							REV
4 PLC ±-							B
ANGLES ±-							
FINISH							
-							
-							

printed on 18 Jun 2021 14:46 (China Standard Time) from TE236667

A

A

D

D

C

B

单击下面可查看定价，库存，交付和生命周期等信息

[>>TE Connectivity\(泰科\)](#)