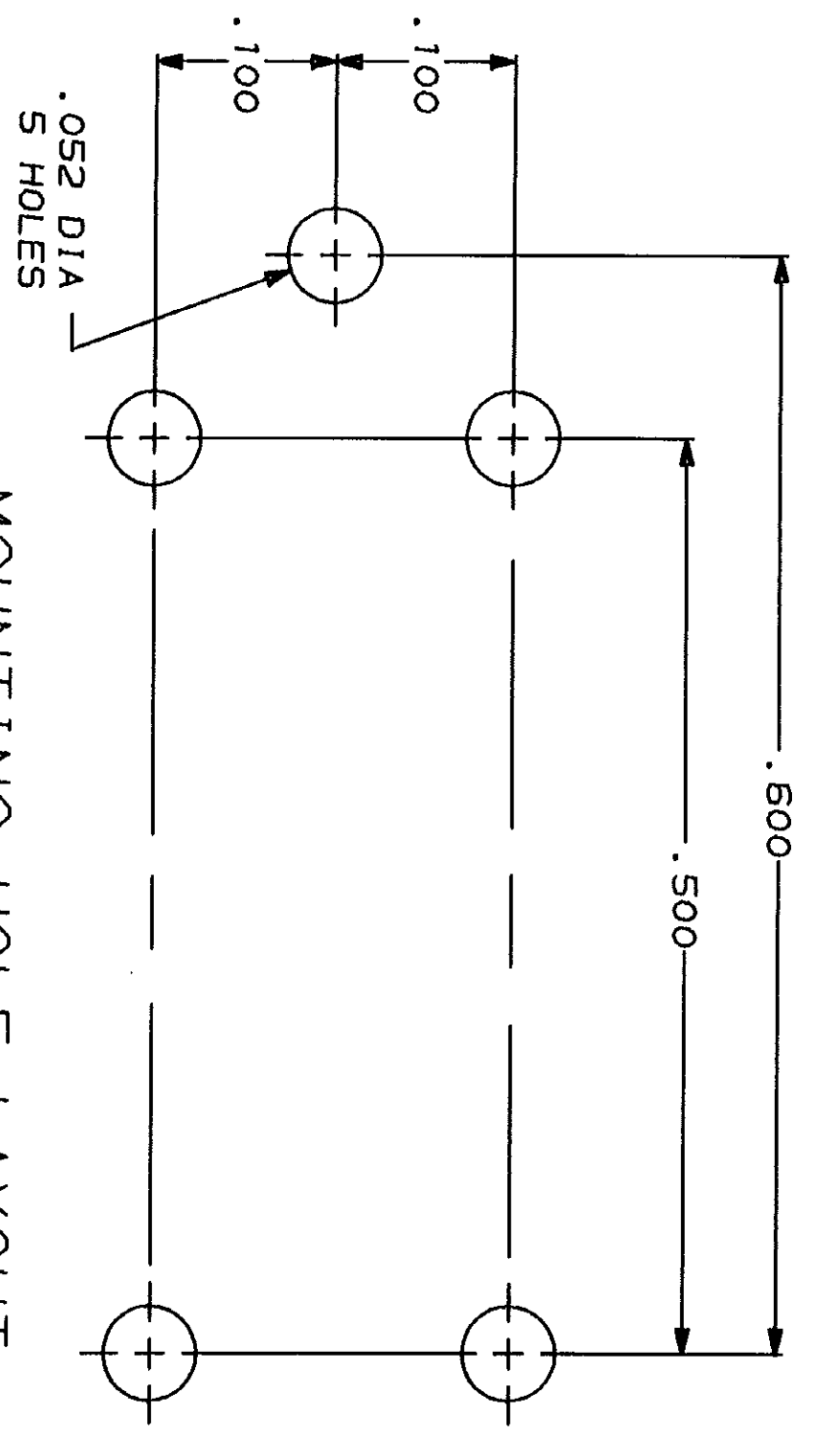
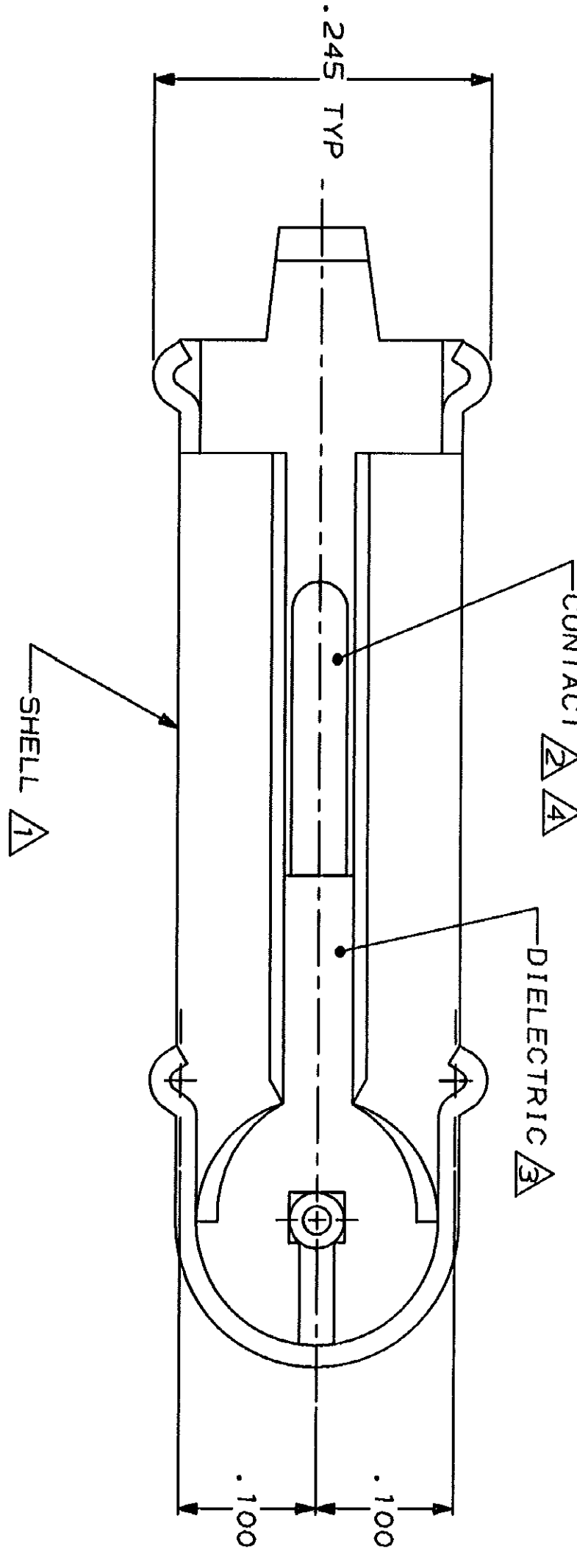
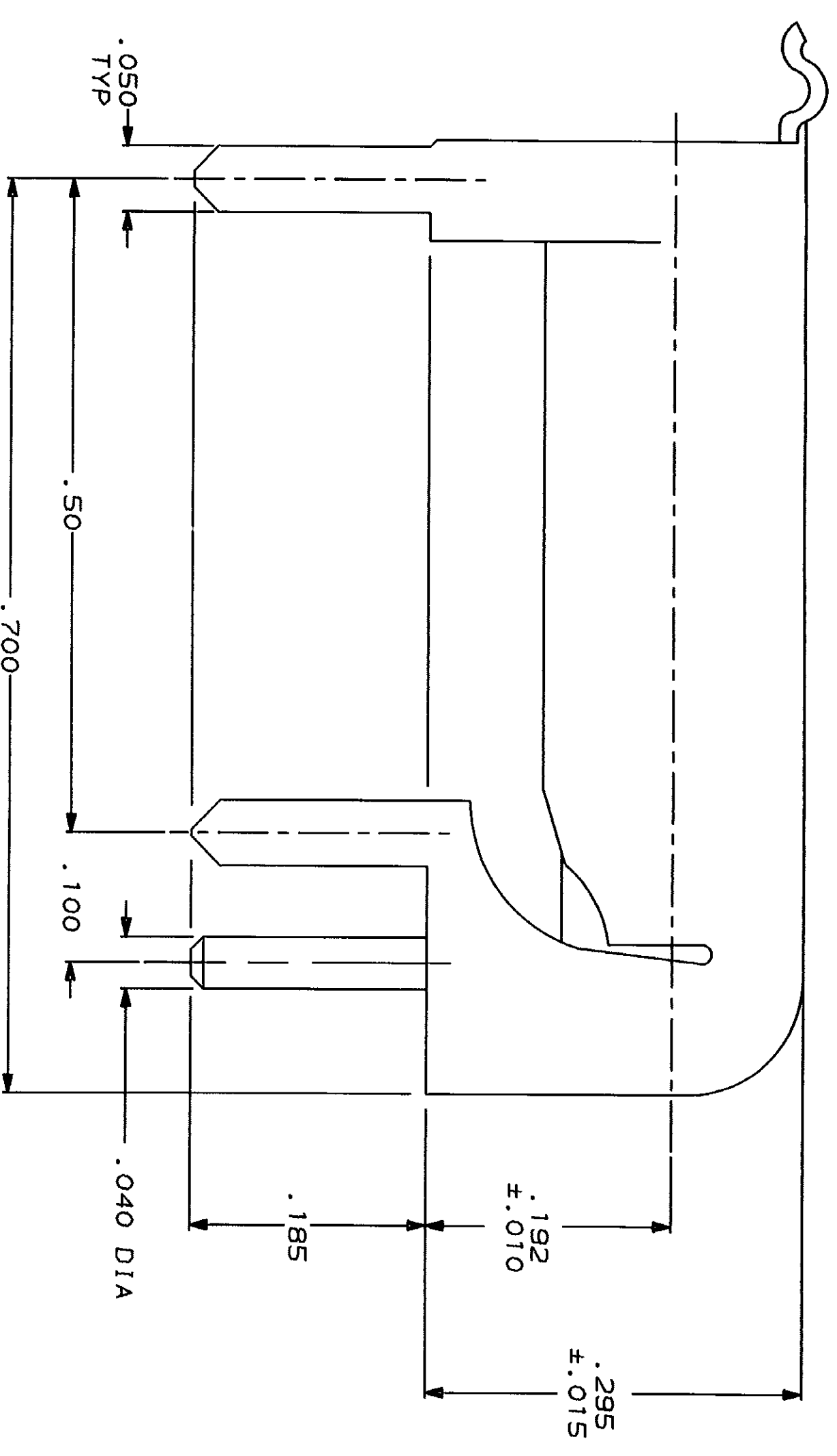


LOC	DIST	REV	ZONE	LTR	DESCRIPTION	DATE	APPD
AJ	16			J	REVISED AND REDRAWN PER AJ-4040	6-29-89	JG
				K	OBS -2 PER AJ-3015	02/02/93	JPD



- 1 BRASS PER MIL-C-50
- 2 BRASS PER QQ-B-626
- 3 POLYPROPYLENE, GENERAL PURPOSE.
- 4 GOLD PLATE PER MIL-G-45204, .000030 MIN THK.
- 5 NICKEL PLATE PER QQ-N-290
- 6. FOR USE WITH .125 MAX PRINTED CIRCUIT BOARD.
- 7. SEE I.S. 1204.

MOUNTING HOLE LAYOUT

OBsolete	50105-2
SHELL FINISH	50105-1
PART NUMBER	

DO NOT SCALE PRINT. UNLESS SPECIFIED DIMENSIONS IN INCHES TOLERANCES ON:		DR	J.L. GROFT	6-30-89	AMP INCORPORATED 1000 Industrial Blvd., Po. 17105
1 PLG DEC ± .01		CHK	S.J. MAGARO	9-28-89	
2 PLG DEC ± .01		APPD	M. SNEED	1-16-90	
3 PLG DEC ± .008		APPD	M. SNEED	1-16-90	
MATERIAL		PRODUCT SPEC	108-12081	NAME	SOCKET, PCB, LOCKING LATCH, MINIATURE
SEE NOTES 1 & 2		APPLICATION SPEC		SIZE	
SEE TABLE		SCALE	10:1	FSCH NO	
		WEIGHT		DRAWING NO	50105
				SHEET	1 OF 1

单击下面可查看定价，库存，交付和生命周期等信息

[>>TE Connectivity\(泰科\)](#)