

SHEET 1 OF 1

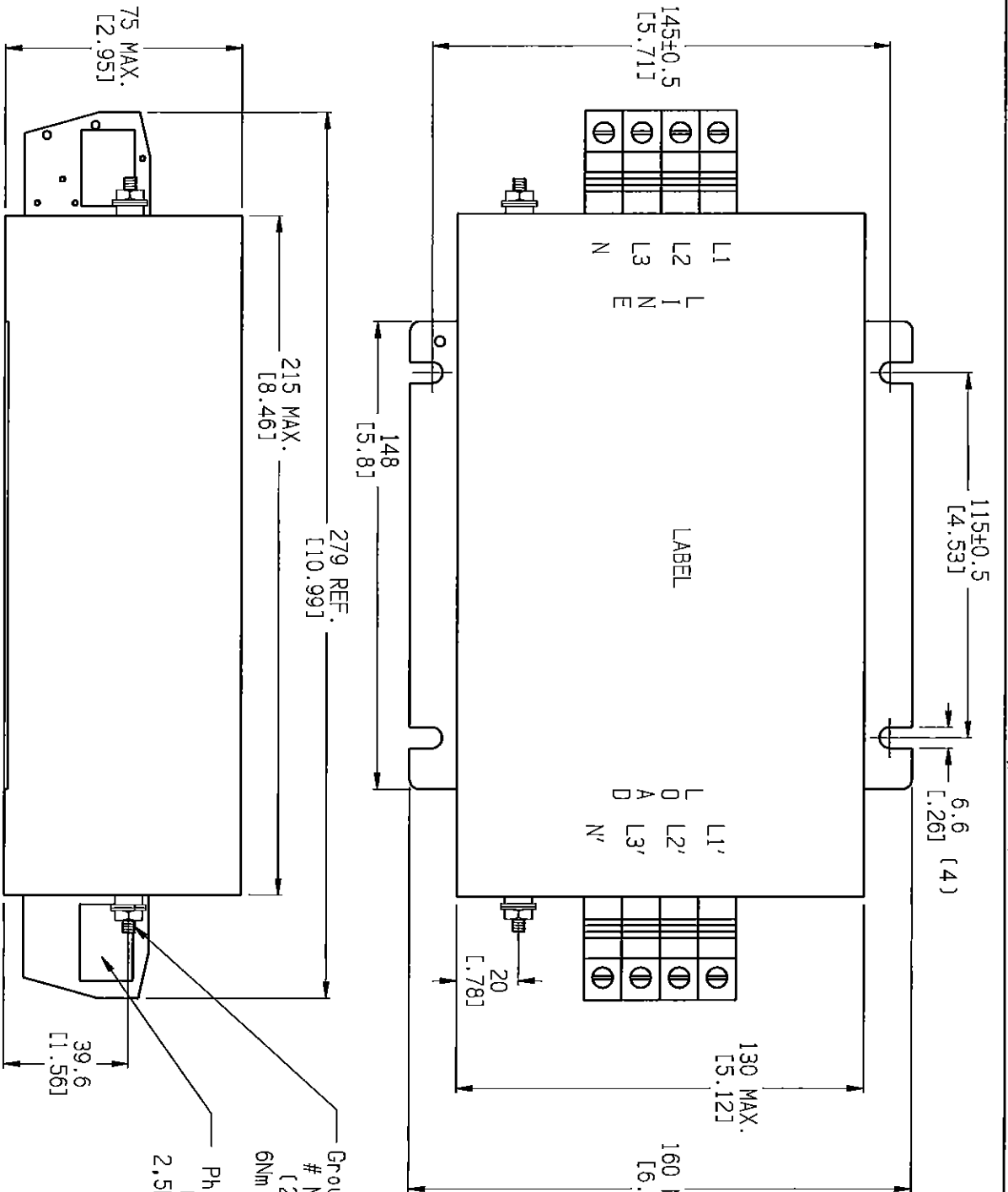
EC #	APPRVD.	DATE	REV.
15-017185	TAM	01DEC15	B

SPECIFICATION

63Amp/40°C 50-60Hz
 480VAC Phase to Phase
 277VAC Phase to Neutral/Gnd
 Hipot rating (2sec.):
 Phase to Ground 1850VDC
 Phase to Phase 1450VDC
 Neutral to Ph/Gnd 1450VDC
 Surge: 2500V - 1,2/50µs
 Burst: 3500V

ATTENUATION

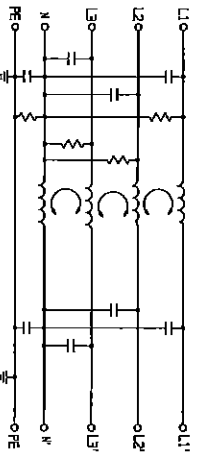
Conn. Mode - 88dBµV at 150kHz
 Dif. Mode - 75dBµV at 150kHz



Ground terminal
 # M6 Screw
 (2 Places)
 6Nm Max. Torque

Phoenix HDFK16
 (8 Places)
 2.5Nm Max. Torque

UNLESS SPECIFIED, TOLERANCE TO BE ±0.51 [0.0201].



63AYC10B-3.cxd LAYOUT: New Layout 2

SHEET SIZE: A
 THIRD ANGLE PROJECTION

THIS INFORMATION IS CONFIDENTIAL AND PROPRIETARY TO TYCO ELECTRONICS CORPORATION AND ITS WORLDWIDE SUBSIDIARIES AND AFFILIATES. IT MAY NOT BE DISCLOSED TO ANYONE OTHER THAN TYCO ELECTRONICS PERSONNEL, WITHOUT WRITTEN AUTHORIZATION FROM TYCO ELECTRONICS CORPORATION, HARRISBURG, PENNSYLVANIA USA.

TE TE Connectivity

PFI FILTER

TE PART NO.:	66090067-3
SCALE:	1/2
DATE:	01DEC15
DRWG. NUMBER:	63AYC10B
DRW. BY:	LJD
DRWG.:	TAM
REV.:	B

单击下面可查看定价，库存，交付和生命周期等信息

[>>TE Connectivity\(泰科\)](#)