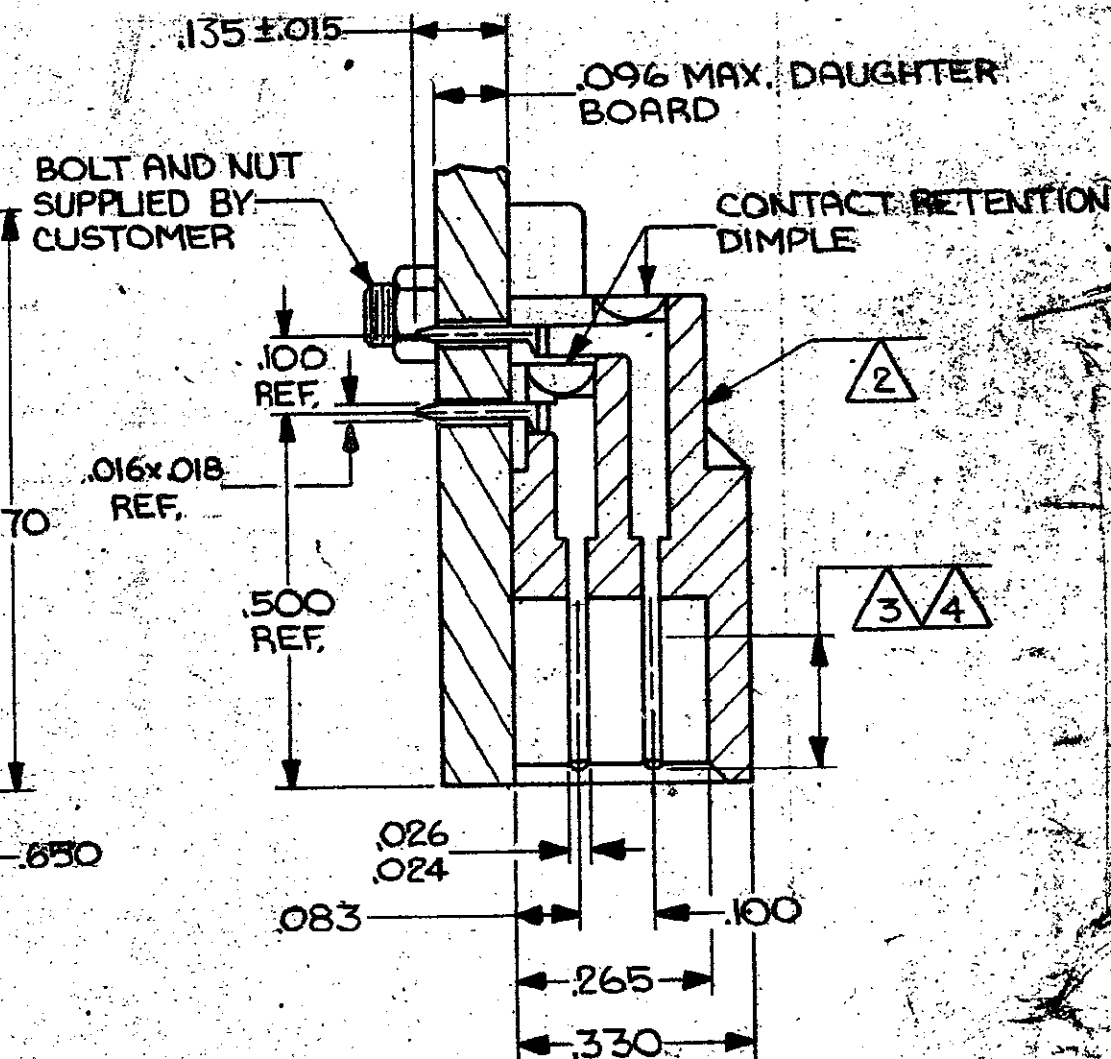
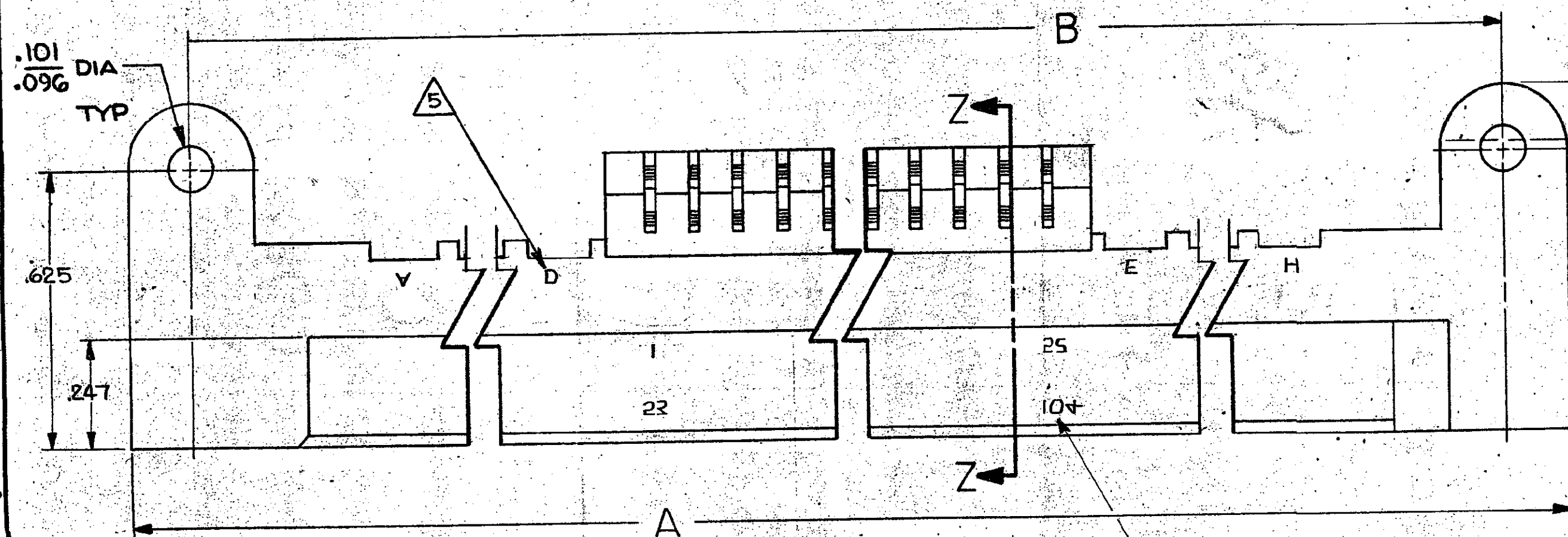
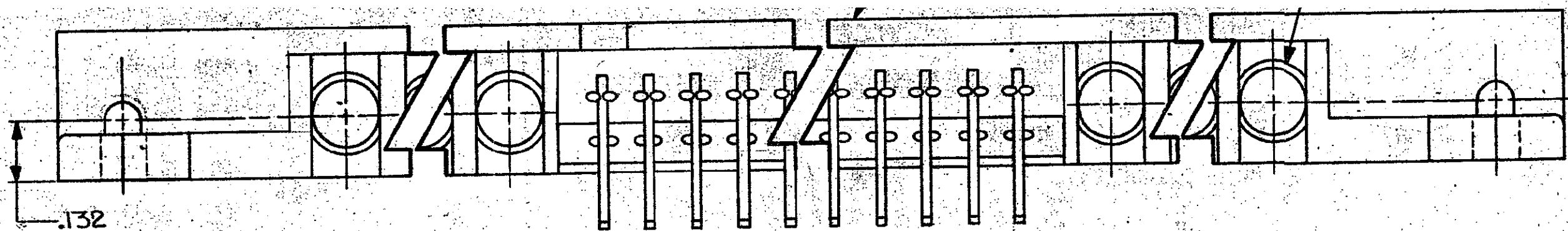


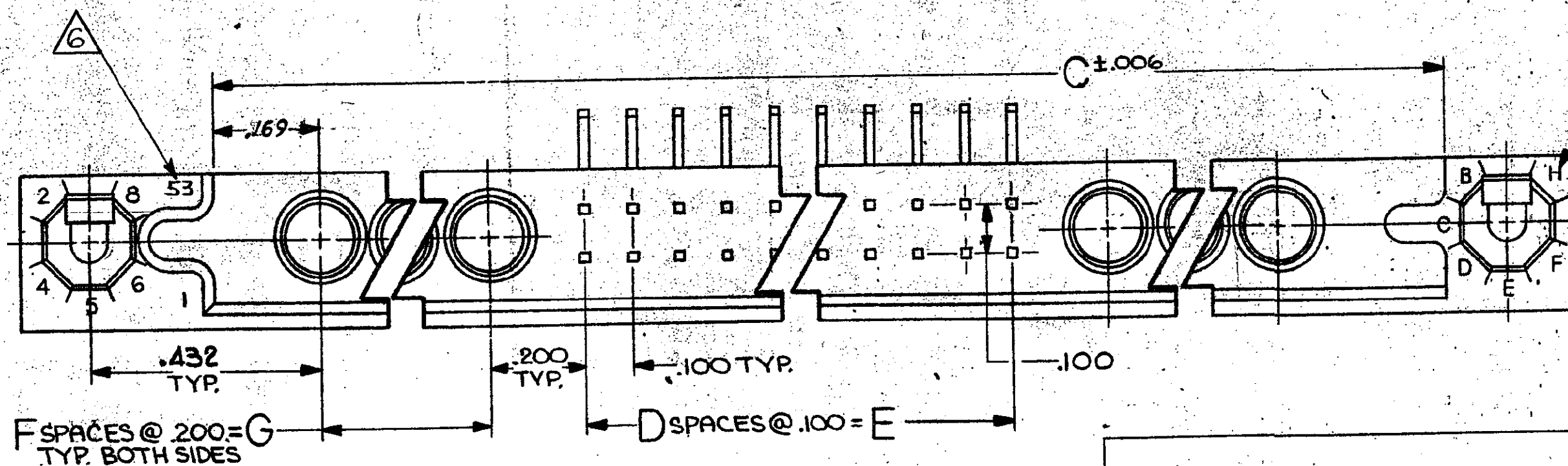
© COPYRIGHT 19 BY AMP INCORPORATED, HARRISBURG, PA.  
 ALL INTERNATIONAL RIGHTS RESERVED. AMP INCORPORATED PRODUCTS  
 COVERED BY U. S. AND FOREIGN PATENTS AND/OR PATENTS PENDING.

THIS DRAWING IS UNPUBLISHED  
 RELEASED FOR PUBLICATION 19

		REVISIONS		
NO.	ZONE/LTR	DESCRIPTION	DATE	APPROVED
0		RELEASED WAS 5085-10693	5-89	
1	A	REV PER DF-2126 T.W.	8-89	DM
2	B	REV PER DF-4316 AJG	8-91	DM
3	C	REV 0600-5641-96 TT	9-97	DM
4	D	ECO-10-002916 PY	2-10	DM



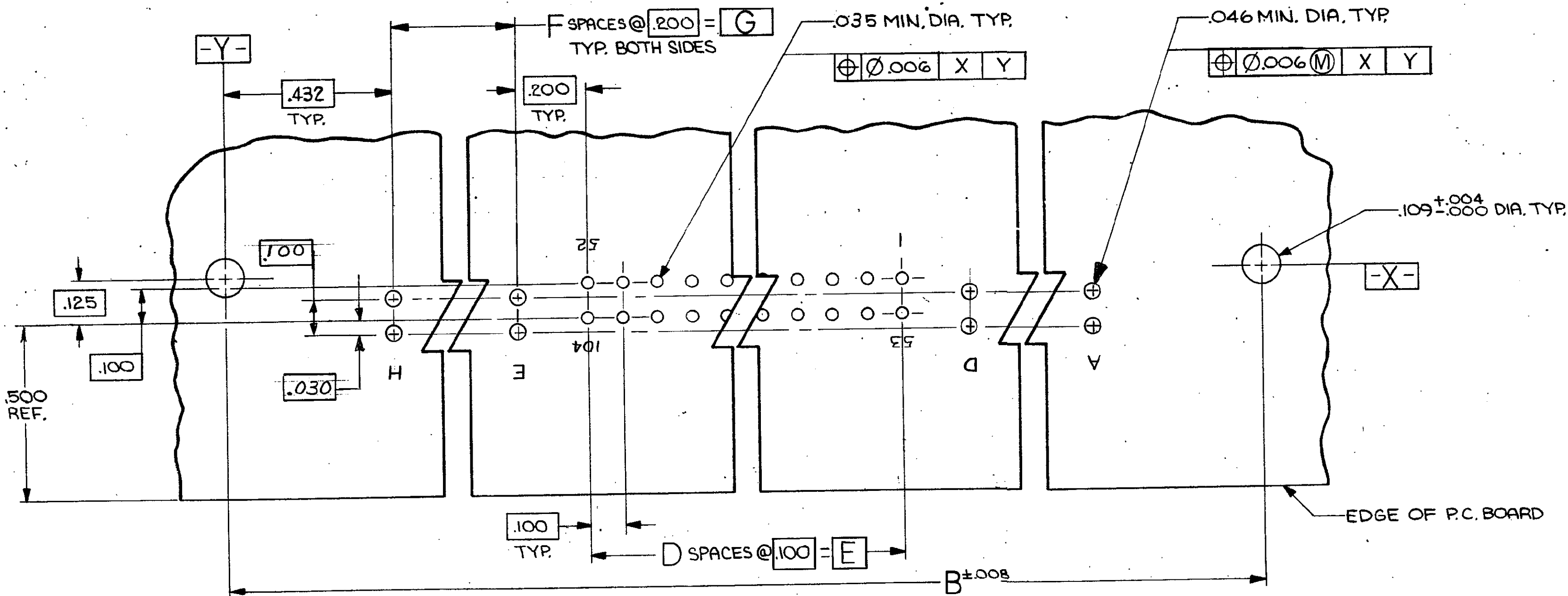
SECTION Z-Z



MOLDED KEY POS. INDICATORS

UNLESS OTHERWISE SPECIFIED DIMENSIONS ARE IN INCHES. TOLERANCES ON: DECIMALS ±.010 ANGLES MATERIAL FINISH	CONTRACT NO	AMP INCORPORATED Harrisburg, Pa.	
	DR <i>W. Seufert</i>	4-9-84	NAME BOX 1001 SERIES, PIN HEADER ASSEMBLY, WITH COAX
	CHK <i>P.M. Rangan</i>	6/4/87	SIZE CODE IDENT NO DRAWING NO
	APPD <i>P.M. Rangan</i>	6/4/84	C 00779 533171
	APPD <i>D. Hoff</i>	6/4/89	REV D
	DSGN APPD		SCALE 4:1
	OTHER APPD		SHEET 1 OF 2

CUSTOMER DRAWING



RECOMMENDED P.C. BOARD LAYOUT

- 1 "AMP", PART NO., AND DATE CODE MARKED THIS AREA
- 2 HOUSING MATERIAL: GLASS-FILLED POLYESTER, COLOR-BLUE.
- 3 CONTACT FINISH: .000050 NICKEL UNDERPLATE ALL OVER, .000050 GOLD IN THIS AREA, .000100 TIN LEAD ON SOLDER TAIL.
- 4 CONTACT MATERIAL: BRASS.
- 5 COAX POS. (A,B,C,D,E,F,G, H) MARKED ON OPPOSITE SIDE ONLY.
- 6 ONLY CONT. POS. MARKED ON OPPOSITE SIDE ONLY. NUMBERS INDICATING EVERY FIFTH CAVITY MARKED ON SIDE. NUMBERS INDICATING END CAVITIES MARKED ON MATING FACE.
- 7 WILL ACCEPT MICROMINATURE COAX CONTACT, AMP P/N 227602-1 & 227604-1 INSERT COAX CONTACT P/N 227602-1 FROM THIS SIDE BEFORE MOUNTING TO P.C. BOARD.

	.600	3	0.600	6	2.675	3.065	3.355	8	14	1-533171-0
oBS	↑	↑	1.100	11	3.175	3.565	3.855	↑	24	↑ -9
			1.600	16	3.675	4.065	4.355		34	-8
oBS			2.100	21	4.175	4.565	4.855		44	-7
oBS			2.600	26	4.675	5.065	5.355		54	-6
			3.100	31	5.175	5.565	5.855		64	-5
oBS			3.600	36	5.675	6.065	6.355		74	-4
oBS			4.100	41	6.175	6.565	6.855		84	-3
	↓	↓	4.600	46	6.675	7.065	7.355	↓	94	↓ -2
oBS	.600	3	5.100	51	7.175	7.565	7.855	8	104	533171-1
	G	F	E	D	C	B	A	COAX POS	POS	PART NO.

UNLESS OTHERWISE SPECIFIED DIMENSIONS ARE IN INCHES. TOLERANCES ON: DECIMALS ± ANGLES ±	CONTRACT NO		<b>AMP</b>   AMP INCORPORATED Harrisburg, Pa.		
	DR	4-9-84			
	MATERIAL	CHK C.P.M. Reagan 6/4/84	NAME BOX 1001, SERIES, PIN HEADER ASSEMBLY, WITH COAX		
	FINISH	APPD C.P.M. Reagan 6/4/84	SIZE CODE IDENT NO	DRAWING NO	REV
	DSGN APPD	C	00779	533171	D
	OTHER APPD	SCALE 4:1		SHEET 2 OF 2	

CUSTOMER DRAWING

单击下面可查看定价，库存，交付和生命周期等信息

[>>TE Connectivity\(泰科\)](#)