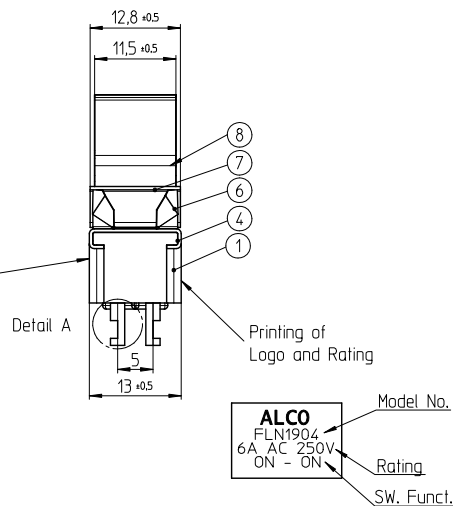
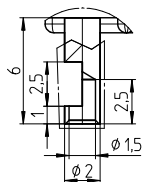
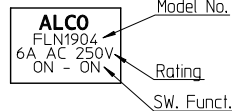


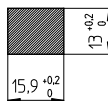
Detail A
Scale 5:1



Date Code Printing
last digit of year
A-L = January to December
Day

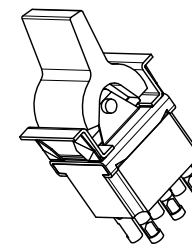
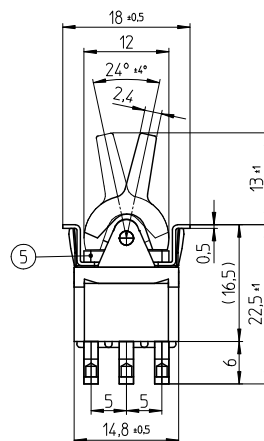
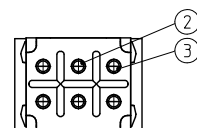


Panel Cutout
thickness 1 to 2.5mm



Specifications

TE PN	Part	Rating	Initial Contact Resistance	Insulation Resistance	Dielectric Strength	Endurance
2-6437630-6 3-6437630-7 2-6437630-7	FLN1904	AC 125V 6A AC 250V 6A	MAX 10 milliohms at DC 2 ~ 4V 1A	MIN 1000 M Ohms at DC 500V	AC 1kV/1min (AC 1.2kV/1sec)	electrically 50,000 cycles at 20 cycles/minute (rated load resistive) mechanically 100,000 cycles at 20 cycles/minute



Function Chart



TE PN	Button	Part	Terminals 1 and 2 4 and 5	Terminals 2 and 3 5 and 6
2-6437630-6	white	FLN1904	ON	ON
3-6437630-7	black	FLN1904	ON	ON
2-6437630-7	red	FLN1904	ON	ON

Materials Chart

Item	Part Name	Material	Color
1	Case	Polyester Resin	Black
2	Common	C3602BD	Ep-Cu/Ni 3,Au F b
3	Fixed contact	C3602BD+Ag	Ep-Cu/Ni 3,Au F b
4	Frame	SUS	
5	Mounting Sleeve	C3602BD	Ep-Cu/Ni 3 b
6	Leaf spring	SUS	
7	Plate	SUS	
8	Button	Nyron Resin	

PART NO:		PART NAME:		MATERIAL/SURFACE:		OPTIONAL DESCRIPTION:	
PART LIST							
TOLERANCES UNLESS OTHERWISE SPECIFIED ACCORDING TO ISO 8015 and ISO 2768-1							
DIMENSIONS: mm							
Test dimen. / Prüfmaß: □; auxiliary dimen. / Hilfsmaß: (); theor. dimen. / theor. Maß: □							
production control dimen. / Fertigungs-kontr.maß: [] ; dimen. for measure. technology / messtechn. rel. Maß: [] ;							
DRAWER		D&E		DATE		04.01.2007 SA008712	
CHECKED				DATE			
APPROVED				DATE			
ECR-NO:		DATE		NAME		INFO	
SCALE:		NAME:		DWG NO:		DWG NO: C-1968521	
						OPTIONAL NO: Customer Drawing	
REPLACEMENT FOR:		DWG LOC NO: IF		SHEET: 1 OF 1		REVISION: A A 2	

单击下面可查看定价，库存，交付和生命周期等信息

[>>TE Connectivity\(泰科\)](#)