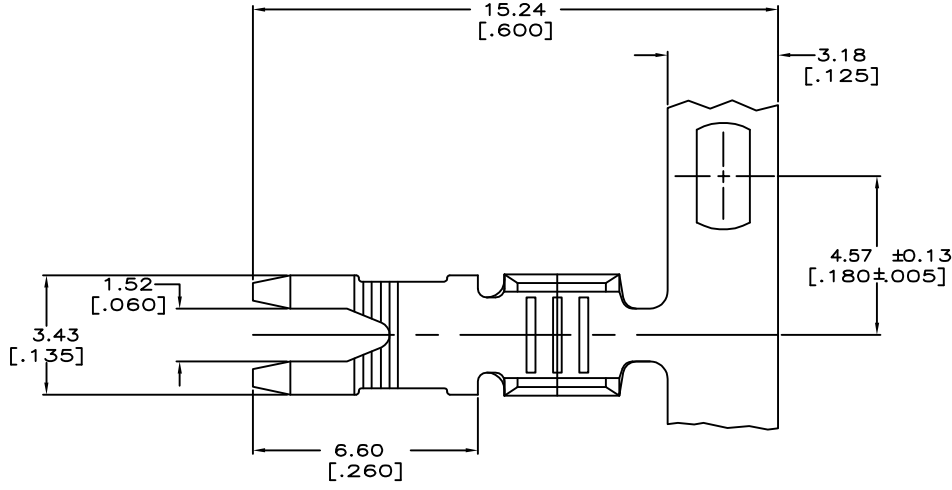
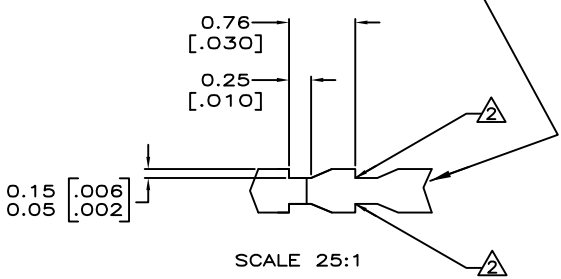
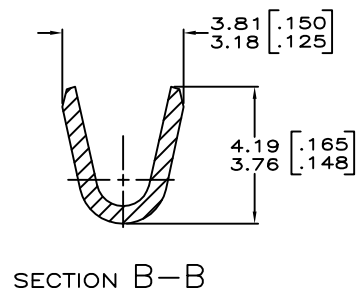
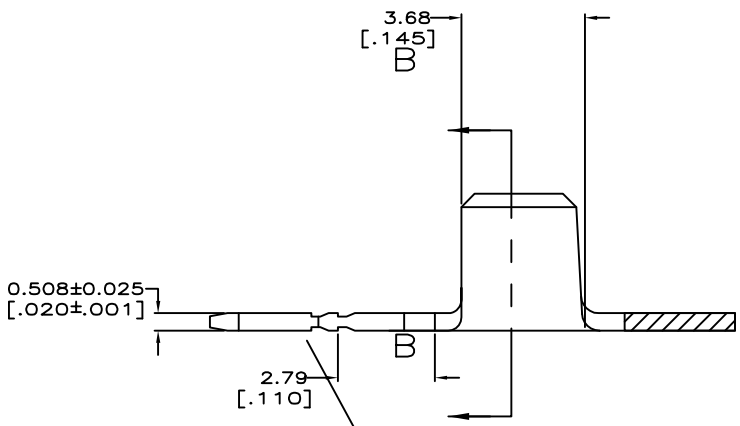


THIS DRAWING IS UNPUBLISHED. RELEASED FOR PUBLICATION
 © COPYRIGHT - By - ALL RIGHTS RESERVED.

LOC		DST		REVISIONS			
P	LTR	DESCRIPTION	DATE	DRN	APRD		
AF	50						
B1		ECR-13-017177	05NOV13	PKS	RRP		



1 CONTINUOUS STRIP ON REELS
 FOR OPTIMUM RETENTION IN POKE-IN TYPE MAG-MATE TERMINALS, ONE OF THE SERRATIONS, AS SHOWN, MUST BE ENGAGED WITH THE EDGE OF THE LEAF



0.8-2.0 mm ² [18 - 14] AWG WIRE RANGE	63775-1
--	---------

THIS DRAWING IS A CONTROLLED DOCUMENT.		DRN MICHAEL S. FEJER 08/FEB/04	TE Connectivity	
DIMENSIONS: INCHES		CHK JEFF R. RUTH 09/FEB/04	NAME	
TOLERANCES UNLESS OTHERWISE SPECIFIED:		APVD	TAB, POKE-IN, MAG-MATE™	
0 PLC ± -	1 PLC ± -	PRODUCT SPEC	-	
2 PLC ± 0.25 [010]	3 PLC ± -	APPLICATION SPEC	114-2050	
4 PLC ± -	ANGLES ± -	WEIGHT	-	
MATERIAL BRASS	FINISH TIN PLATE	SIZE A2	CAGE CODE 00779	DRAWING NO C=63775
CUSTOMER DRAWING		SCALE 10:1	SHEET 1 of 1	REV B1

单击下面可查看定价，库存，交付和生命周期等信息

[>>TE Connectivity\(泰科\)](#)