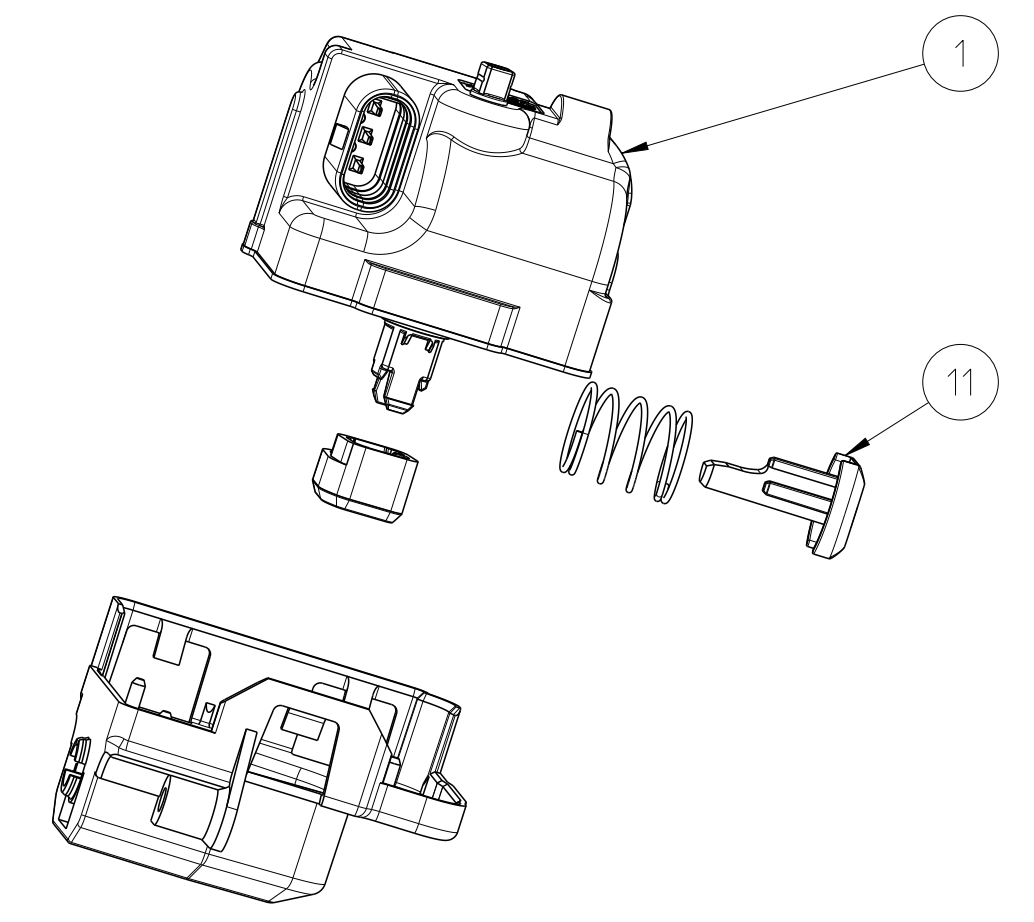
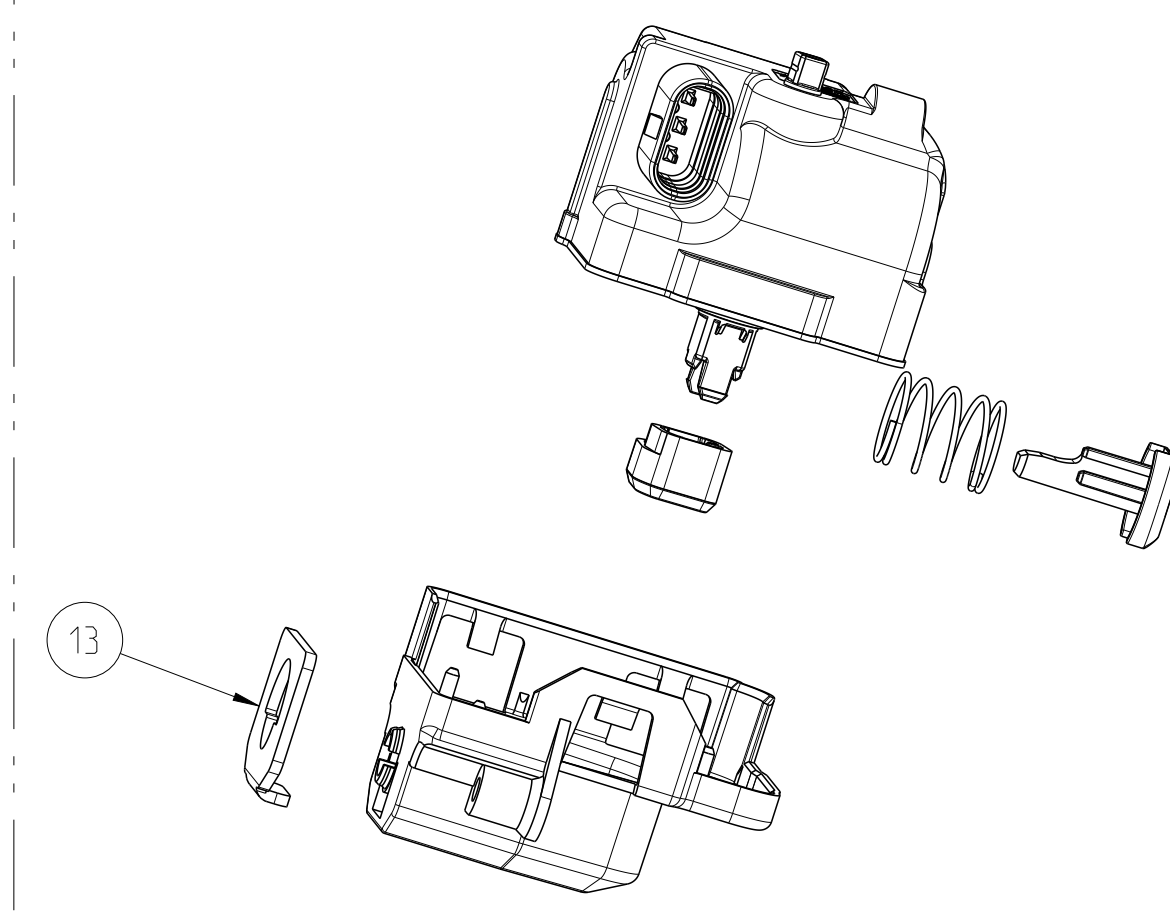


QTY.	REV.	DATE	BY	CHKD.	DESCRIPTION	MATERIAL	REVISION OF EACH ASSY	ITEM NO.													
1	1	-	-	-	WHITE WEISS	PE FOAM	Klebebad, Aktuatorföchtung ADHESIVE LAYER PAD, ACTUATOR SEAL	13													
1	1	-	-	-	WHITE WEISS	PE FOAM	Klebebad, Aktuatorföchtung ADHESIVE LAYER PAD, ACTUATOR SEAL	12													
1	1	-	-	-	SCHWARZ BLACK	PA66 GF33	Verriegelungsstift special LOCKING PIN, SPECIAL	11													
-	-	-	1	1	GRAU-SCHWARZ GREY-BLACK	-	Aktuator, 80deg, mit Hebel ACTUATOR, 80DEG, WITH LEVER	10													
-	-	-	1	1	SCHWARZ BLACK	PA GF-GB	Schutzkappe, Aktuator CARRIER, ACTUATOR	9													
1	1	-	-	-	SCHWARZ BLACK	PA GF-GB	Schutzkappe, Aktuator CARRIER, ACTUATOR	8													
-	-	-	-	-	SCHWARZ BLACK	PA GF-GB	Schutzkappe, Aktuator CARRIER, ACTUATOR	7													
-	-	-	1	1	SCHWARZ BLACK	PA66 GF33	Verriegelungsstift LOCKING PIN	6													
-	-	-	-	-	SCHWARZ BLACK	PA66 GF33	Verriegelungsstift LOCKING PIN	5													
1	1	1	1	1	Optional Verzinkt OPTIONALLY ZINC COATED	STAINLESS STEEL	Druckfeder D12H16d1 COMPRESSION SPRING D12H16d1	4													
1	1	1	1	1	SCHWARZ BLACK	POM	Nocke, Aktuator CAM, ACTUATOR	3													
-	-	-	-	-	SCHWARZ BLACK	POM	Nocke, Aktuator CAM, ACTUATOR	2													
1	1	1	-	-	GRAU-SCHWARZ GREY-BLACK	-	Aktuator, 80deg, ohne Hebel ACTUATOR, 80DEG, WITHOUT LEVER	1													
4	-2	3	-2	0	-3	1	-3	1	-2	2	-2	9	-2	9	-1	1	-1	SURFACE /Oberflaeche COLOR/Farbe	MATERIAL Werkstoff	DESCRIPTION Beschreibung	ITEM NO.
REVISION OF EACH ASSY																					
QTY. PER ASSY																					

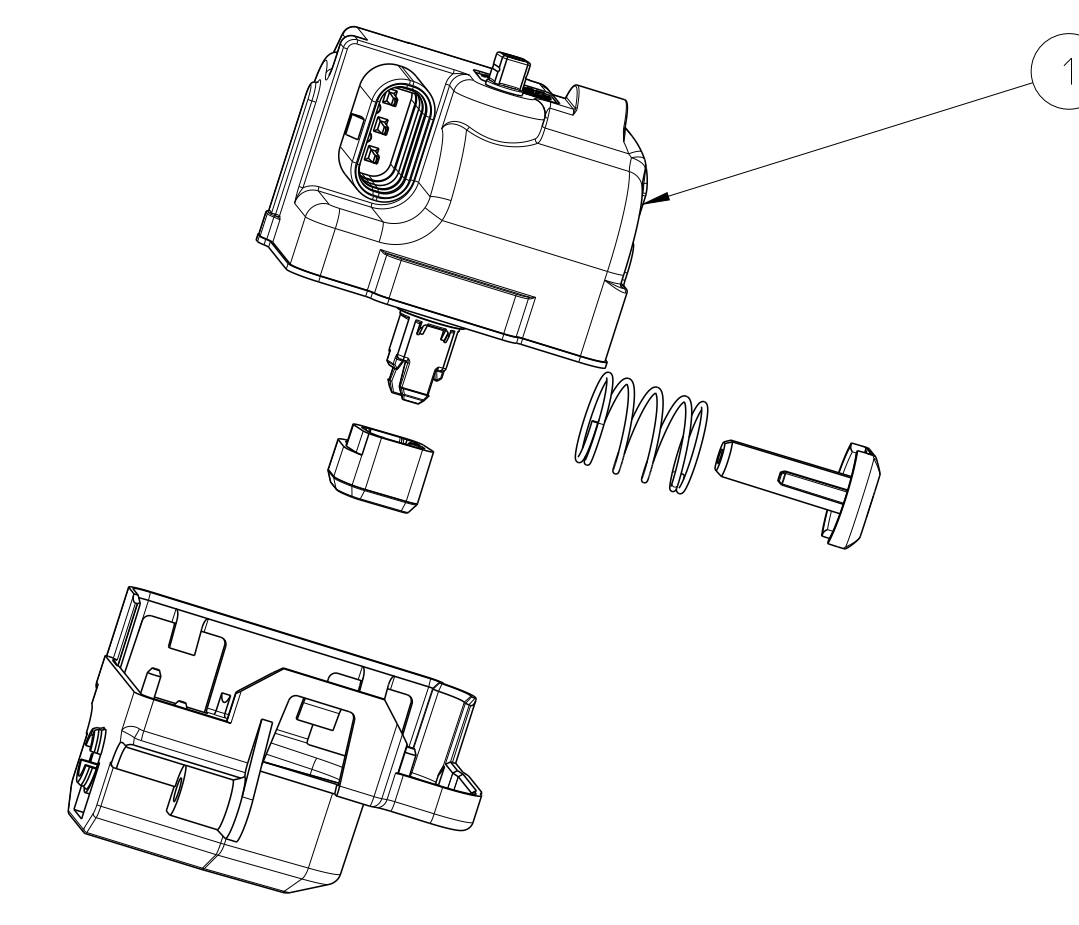
9-2177804-2 AS SHOWN



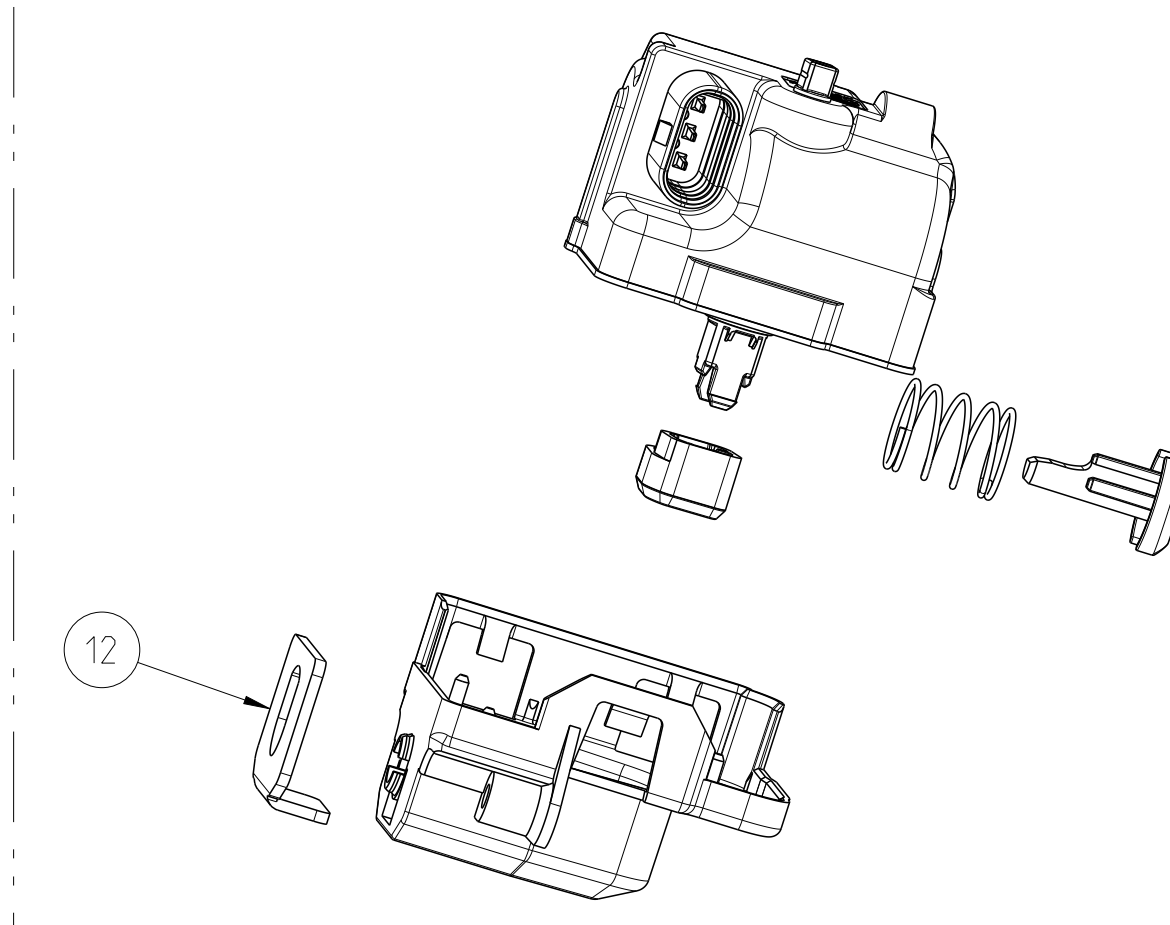
3-2177804-2 AS SHOWN



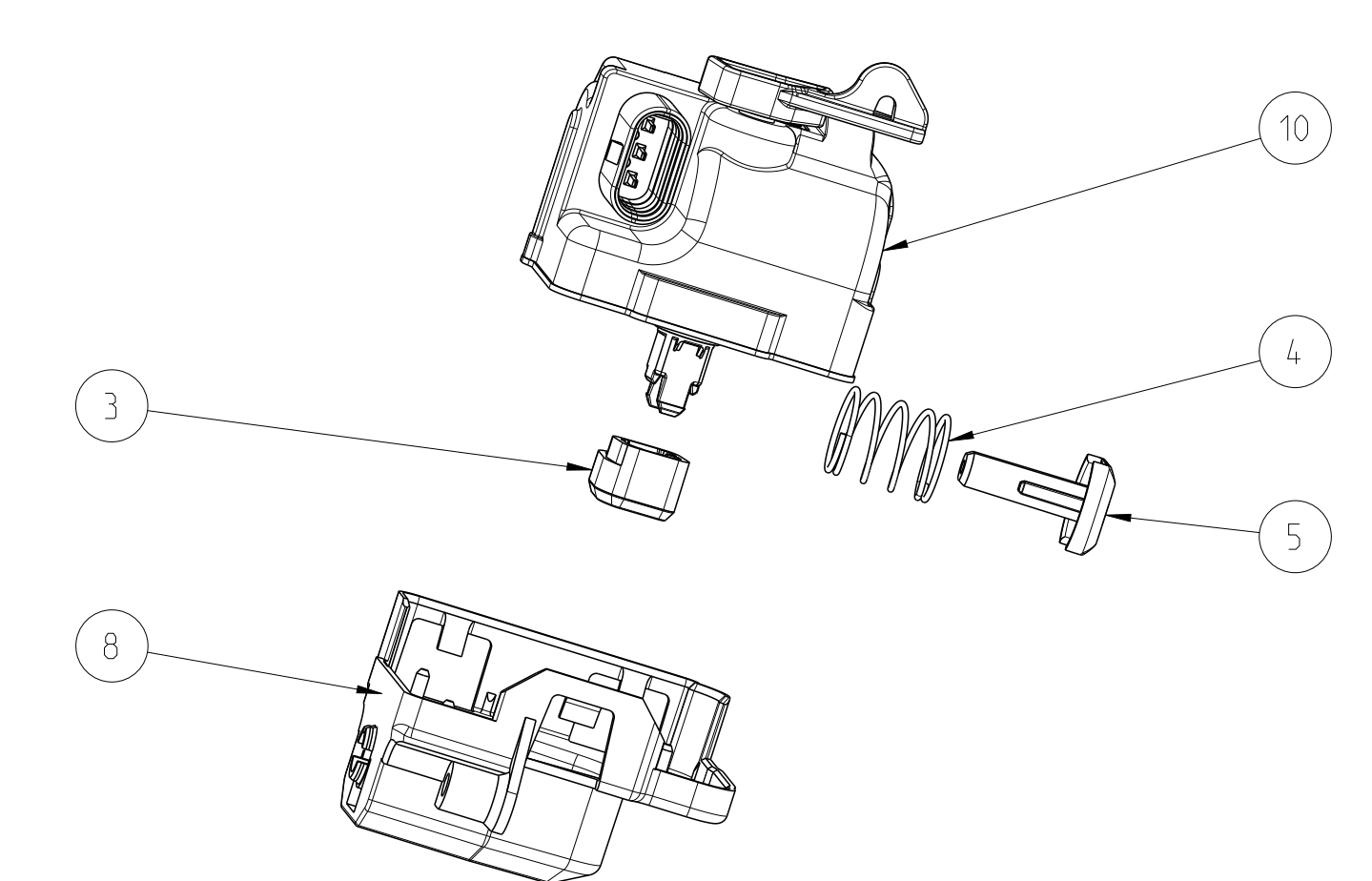
2-2177804-2 AS SHOWN



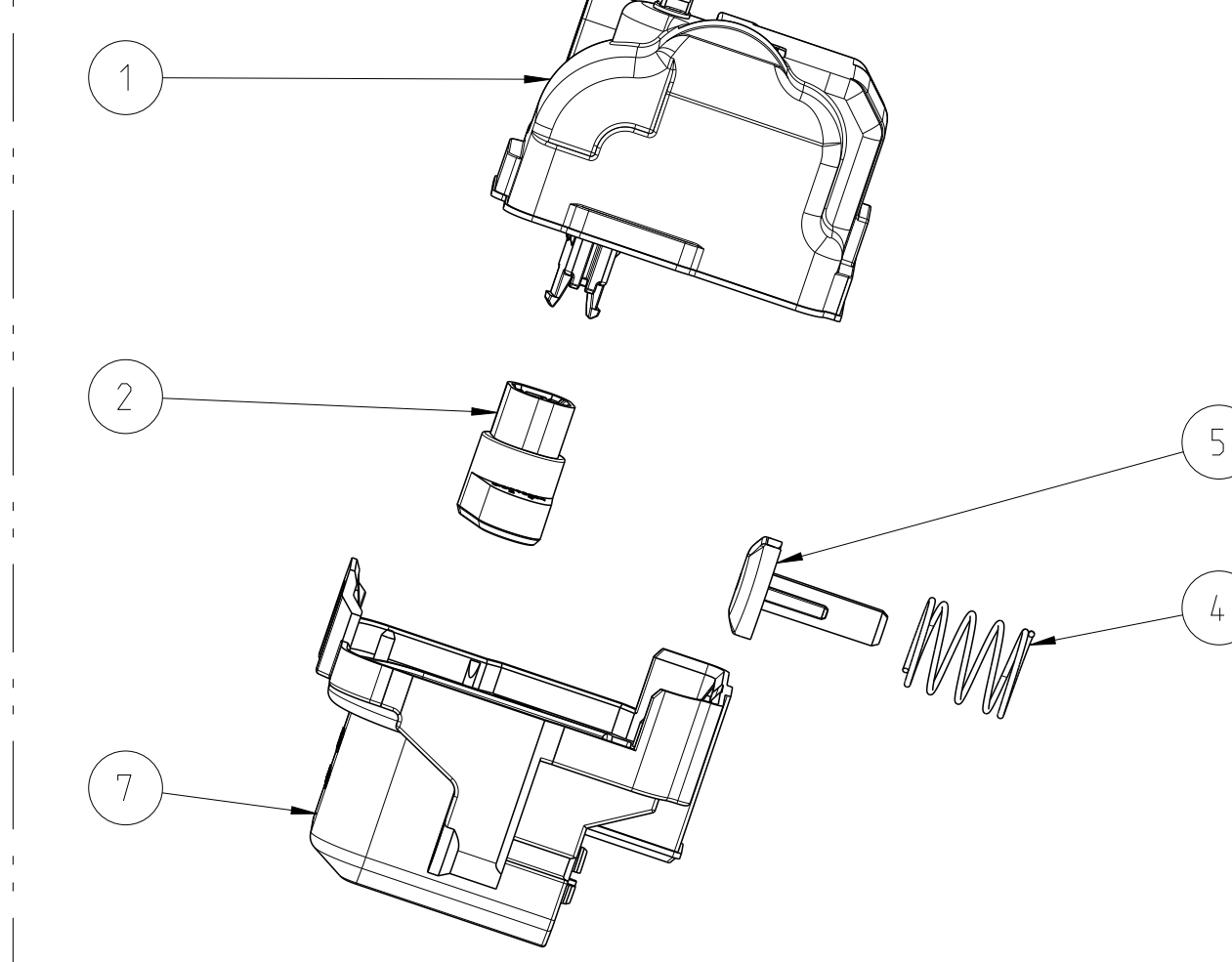
4-2177804-2 AS SHOWN



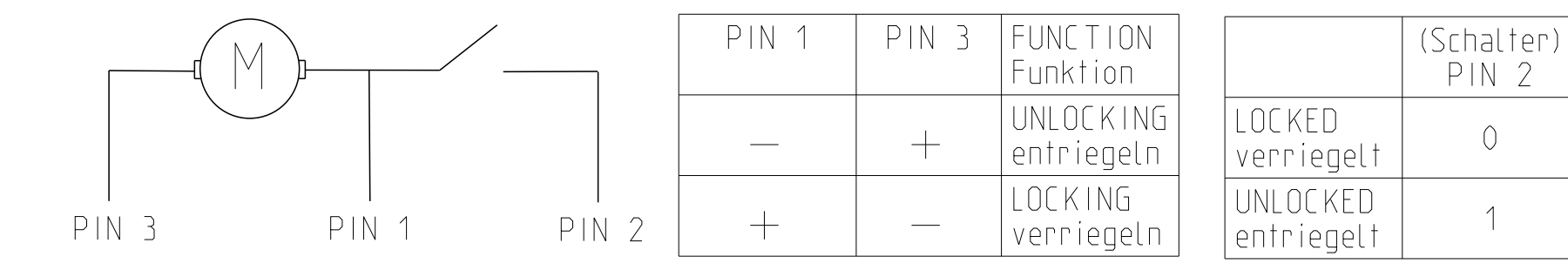
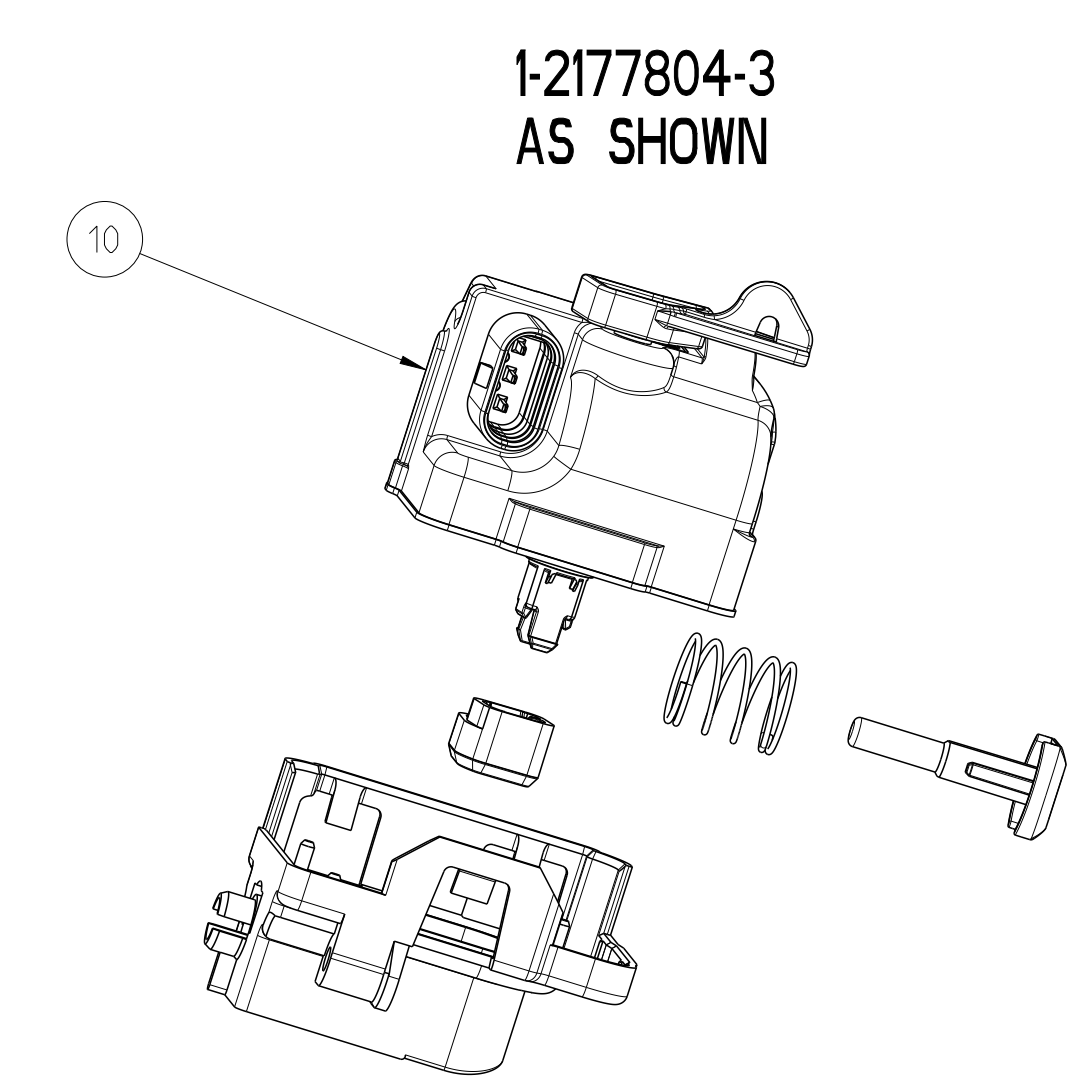
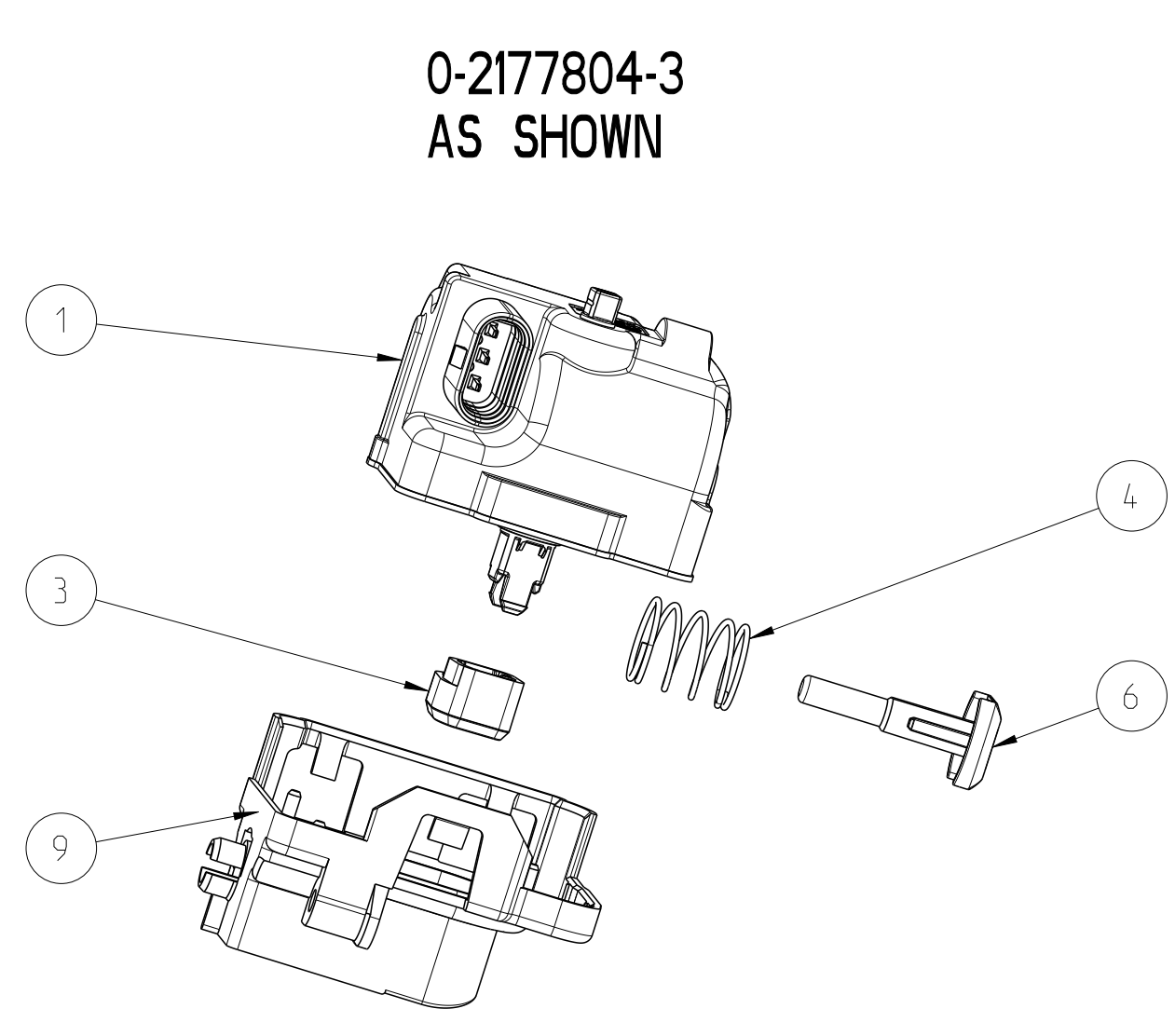
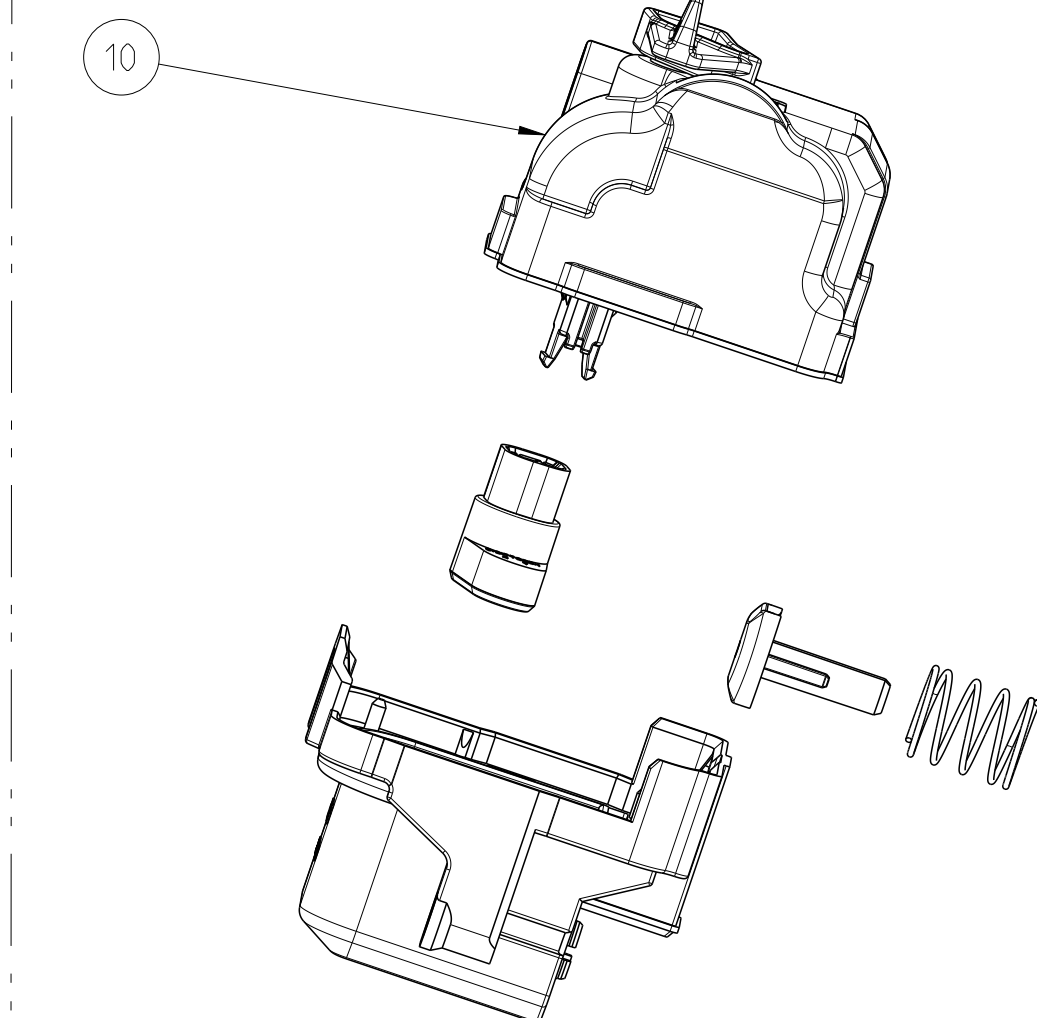
1-2177804-2 AS SHOWN



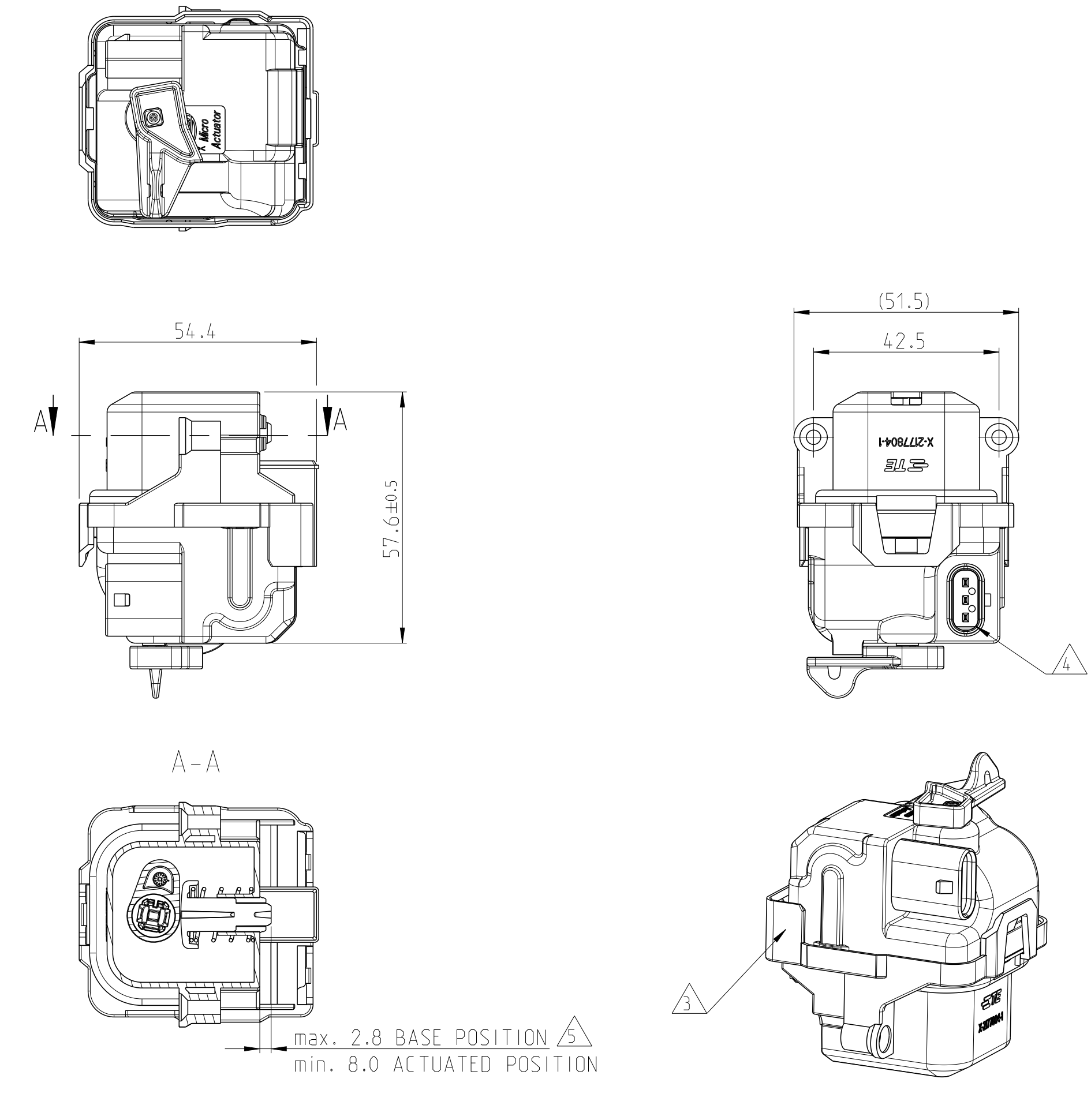
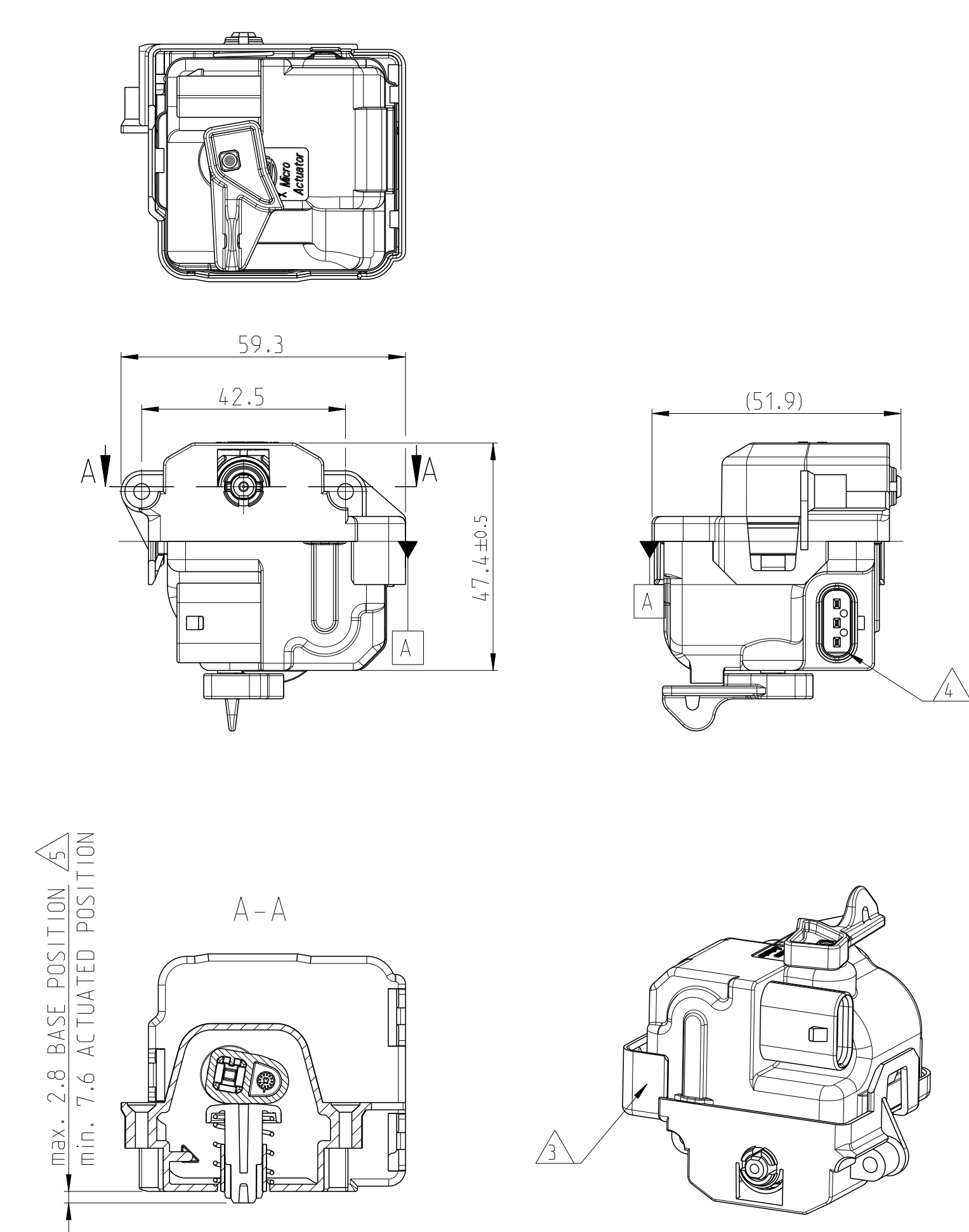
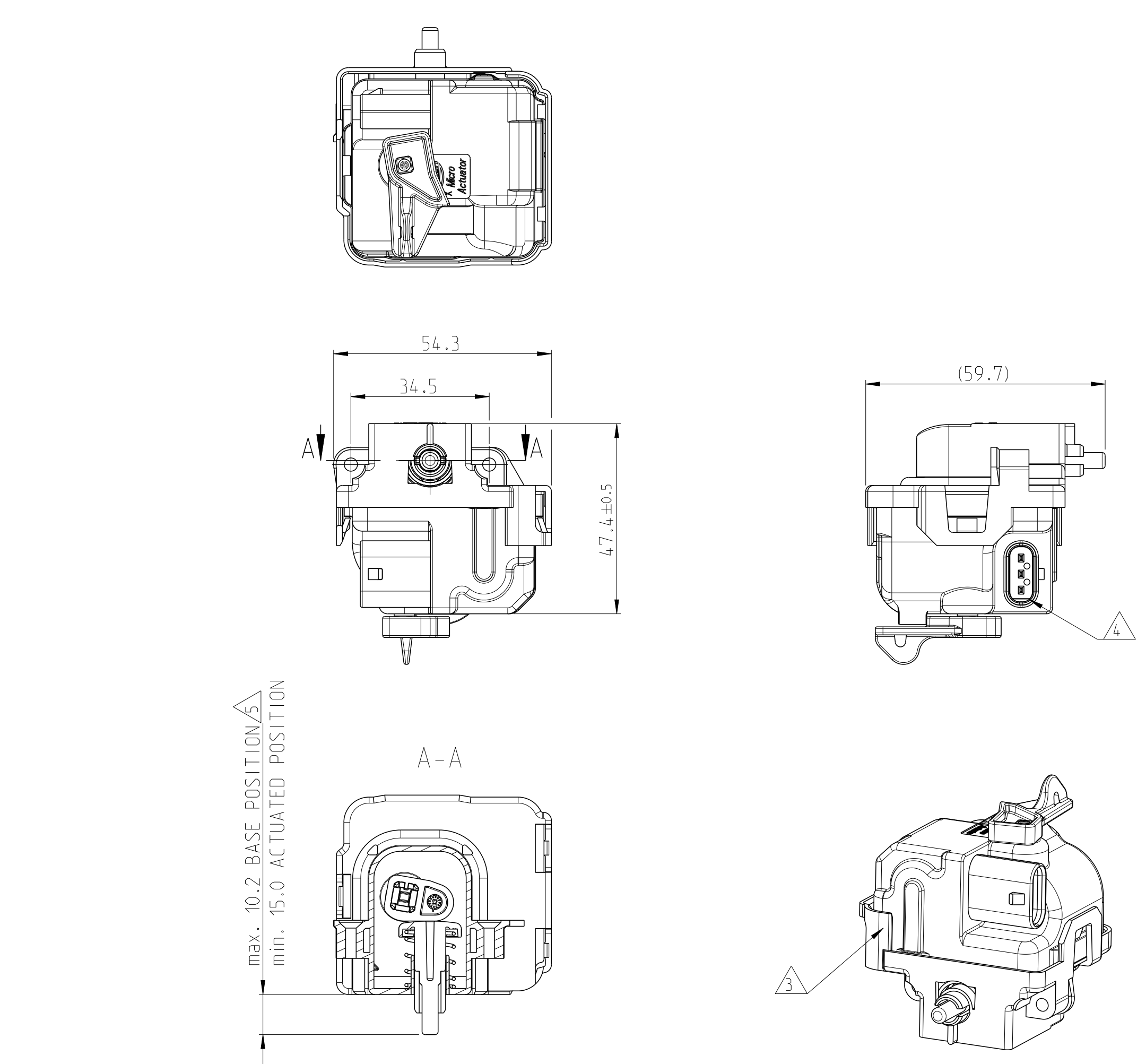
9-2177804-1 AS SHOWN



1-2177804-1 AS SHOWN



TECHNICAL DATA / Technische Daten	
NOMINAL VOLTAGE Nennspannung	12V
MAX. CURRENT CONSUMPTION AT $U_{Bmax}$ AND $-40^{\circ}C$ (WORST-CASE BLOCKING CURRENT) Max. Stromaufnahme bei $U_{Bmax}$ und $-40^{\circ}C$ (worst case Blockierstrom)	worst case = 3.2A
MAX. CURRENT CONSUMPTION AT $U_p$ AND $R_T$ (BLOCKING CURRENT) Max. Stromaufnahme bei $U_p$ und $R_T$ (Blockierstrom)	$I_{max} = 1.8A$
TEST VOLTAGE Pruefspannung $U_p$	13V $\pm$ 0.1V
OPERATING VOLTAGE Betriebsspannung $U_B$	9V ... 15.5V
TEST TEMPERATURE Pruefemperatur $R_T$	$-23^{\circ}C \pm 5^{\circ}C$
OPERATING TEMPERATURE RANGE Betriebstemperaturbereich	$-40^{\circ}C \dots +85^{\circ}C$
ACTUATING TIME FROM BASE POSITION TO ACTUATED POSITION VOLTAGE AND OPERATING TEMPERATURE RANGES Stellzeit von Basisposition in Verriegelungsposition ueber Betriebsspannungs- und Temperaturbereich	40ms < 1 < 200ms
TRIGGER TIME Ansteuerzeit	MAX. 300ms
THERMAL OVERLOAD PROTECTION Thermischer Ueberlastschutz	NOT EXISTING Nicht vorhanden
LIFE TIME Lebensdauer	10.000 SWITCHING CYCLES IN TOTAL 10.000 Schaltzyklen gesamt
CONDUCTED INTERFERENCE Leitungsgebundene Stoerausendungen	INTENSITY 3 CUT-OFF VOLTAGE PEAKS < 75V/ Schaefergrad 3 Abschaltspannungsspitzen < 75V/
CONDUCTED INTERFERENCE OF ELECTRONIC DEVICE Leitungsgebundene Stoerausendungen elektronischer Gerate	INTENSITY 1 - 10 dB $\mu$ V IN ALL RANGES Schaefergrad 1 - 10 dB $\mu$ V in allen Bereichen
PROTECTION DEGREE Schutzart	IP 5K4



DIESE ZEICHNUNG IST EIN KONTROLLIERTES DOKUMENT. DIMENSIONEN UND TOLERANZEN GEMÄSS: GPS ISO STANDARDS.  
 THIS DRAWING IS A CONTROLLED DOCUMENT. DIMENSIONING AND TOLERANCING PER GPS ISO STANDARDS.

**STE** TE Connectivity  
 ACTUATOR LOCKING UNIT, ASSY

DATE: 16MAR2012  
 DRAWN BY: V. Shiba A  
 CHECKED BY: E. W. H. Brock  
 DATE: 02APR2012  
 DATE: 10APR2012

MATERIAL: -  
 WEIGHT: 70g/67g  
 CUSTOMER DRAWING: -  
 SCALE: 1:1  
 SHEET: 1 OF 1  
 REV: H5



单击下面可查看定价，库存，交付和生命周期等信息

[>>TE Connectivity\(泰科\)](#)