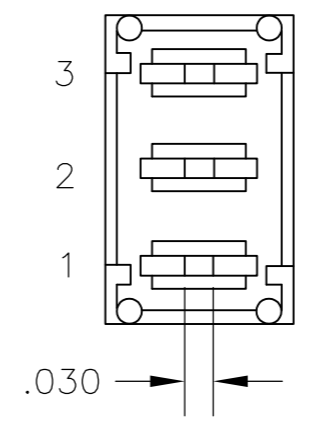
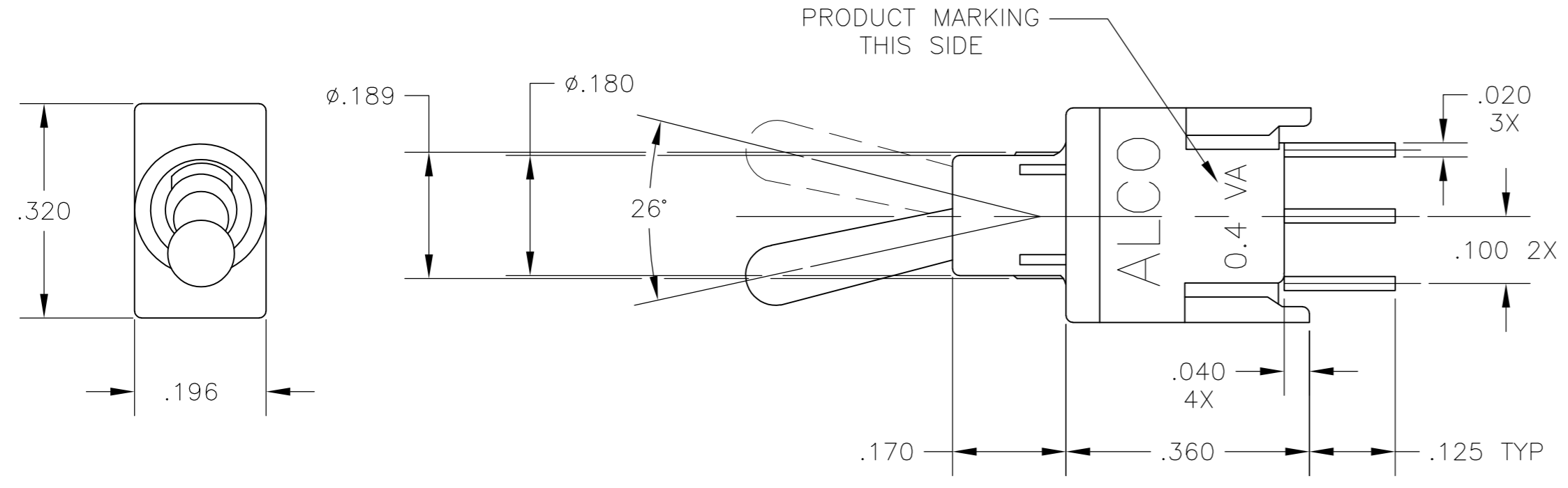


THIS DRAWING IS UNPUBLISHED. RELEASED FOR PUBLICATION
 © COPYRIGHT - By - ALL RIGHTS RESERVED.

LOC		DIST		REVISIONS			
AD	00	P	LTR	DESCRIPTION	DATE	DWN	APVD
		B2		REVISED PER ECO-11-004917	11MAR11	RK	HMR



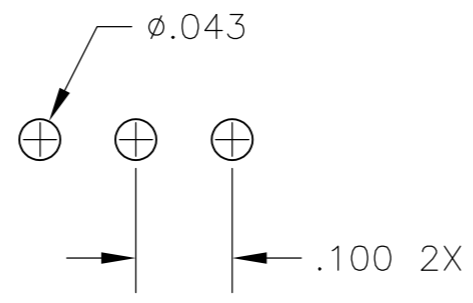
SPECIFICATIONS:

MATERIALS:
 CASE: HIGH TEMPERATURE POLYESTER
 ACTUATOR: NICKEL PLATED COPPER ALLOY
 MOVABLE CONTACT: GOLD OVER NICKEL OVER COPPER ALLOY
 STATIONARY CONTACT: GOLD OVER NICKEL OVER COPPER ALLOY
 TERMINALS: TIN LEAD OVER COPPER ALLOY
 ACUATOR SEAL: O-RING

ELECTRICAL:
 CONTACT RATING: 0.4 VA@ 20 VDC OR PEAK AC
 INITIAL CONTACT RESISTANCE: 20 MILLIOHMS MAX.
 INSULATION RESISTANCE: 1,000 MEGOHMS AT 500 VDC MIN.
 DIELECTRIC STRENGTH: 1,000 VOLTS RMS AT SEA LEVEL
 LIFE EXPECTANCY: 2 POSITION: 80,000 CYCLES
 3 POSITION: 60,000 CYCLES
 MOMENTARY: 30,000 CYCLES

ENVIRONMENTAL:
 OPERATING TEMPERATURE: -22°F TO +185°F (-30°C TO +85°C)
 STORAGE TEMPERATURE: -67°F TO +185°F (-55°C TO +85°C)

PC MOUNT



PC HOLE PATTERN
 TOLERANCES FOR ALL PCB LAYOUT
 DIMENSIONS TO BE ±.002

NOTES

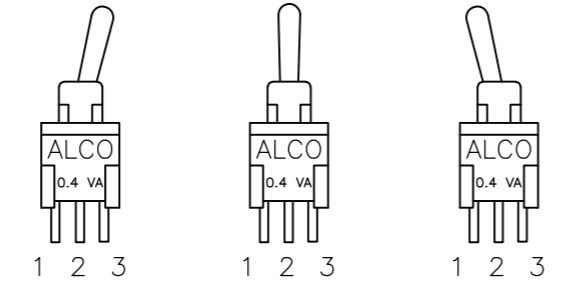
1. INTERPRET DRAWING PER ASME Y14.5M-1994.

PART NUMBERING SEQUENCE

MODEL	NO OF POLES	CONTACT RATING	FUNCTION	CONTAC PLATING	TERMINATORS	ACTUATOR	BUSHING (PLAIN)	TAPE & REEL PKGNG.
\triangle TST	1	1	<ul style="list-style-type: none"> D ON NONE ON E ON OFF ON F ON NONE (ON) G (ON) OFF (ON) H ON OFF (ON) 	G	<ul style="list-style-type: none"> PC P.C. PCV P.C. WITH BRACKET RA RIGHT ANGLE VRA VERTICAL RIGHT ANGLE 	<ul style="list-style-type: none"> 1 .206" 2 .250" 4 .400" 	D	TR \triangle 7

FUNCTION CHART

THE FOLLOWING FUNCTIONS AVAILABLE IN SINGLE POLE.



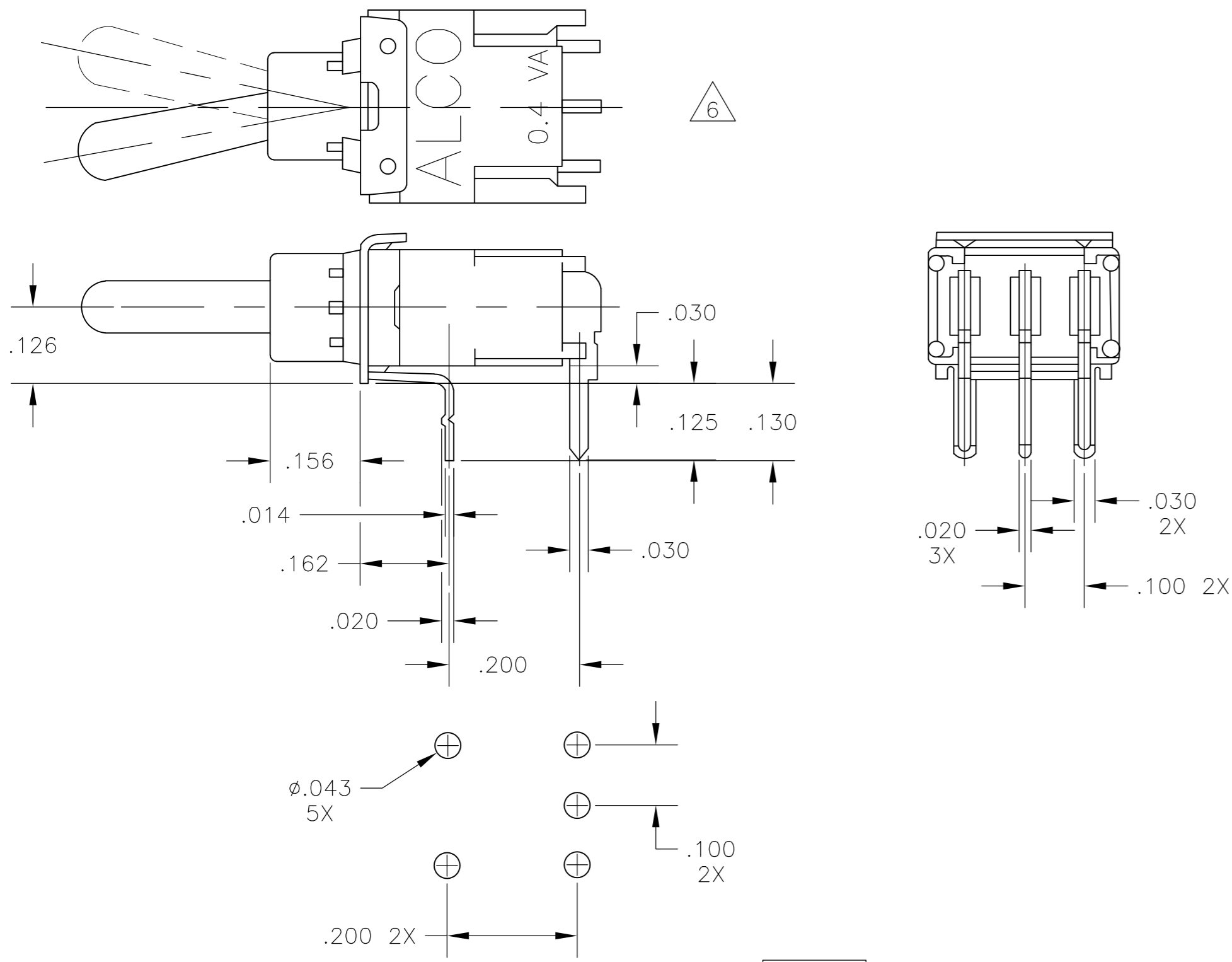
NONE	INDICATES NO MECH-ANICAL POSITION.	D	2 POSITIONS	ON	NONE	ON
		E	3 POSITIONS	ON	OFF	ON
OFF	INDICATES A MECH-ANICAL POSITION WITH NO ELECTRICAL CONNECTION.	F	2 POSITIONS	ON	NONE	(ON)
		G	3 POSITIONS	(ON)	OFF	(ON)
		H	3 POSITIONS	ON	OFF	(ON)

TERMINALS CONNECTED: 1-2 - 2-3

THIS DRAWING IS A CONTROLLED DOCUMENT.		DWN	11JUL90	TE TE Connectivity							
DIMENSIONS: INCHES		CHK	20DEC90								
TOLERANCES UNLESS OTHERWISE SPECIFIED:		APVD	20DEC90								
<ul style="list-style-type: none"> 0 PLC ± - 1 PLC ± - 2 PLC ± - 3 PLC ± .010 4 PLC ± - ANGLES ± 3' 		NAME	OUTLINE DRAWING SEALED TOGGLE SWITCH. SINGLE POLE. TST SERIES								
MATERIAL	SEE SPECIFICATIONS	FINISH	SEE SPECIFICATIONS	SIZE	A2	CAGE CODE	00779	DRAWING NO	C=1-1437564-1	RESTRICTED TO	-
CUSTOMER DRAWING		WEIGHT	-	SCALE	5:1	SHEET	1 of 3	REV	B2		

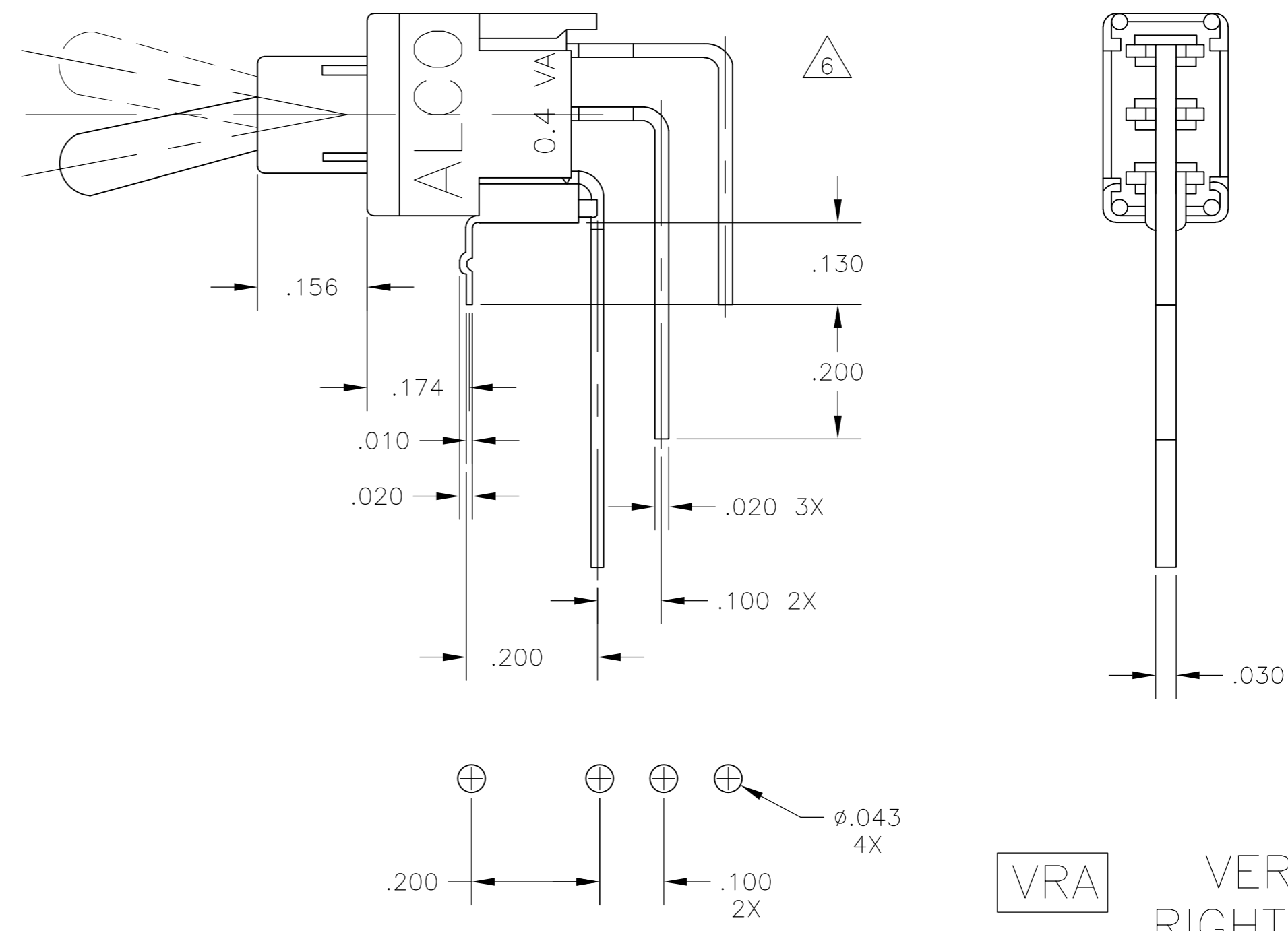
THIS DRAWING IS UNPUBLISHED. RELEASED FOR PUBLICATION
 © COPYRIGHT - By - ALL RIGHTS RESERVED.

LOC		DIST		REVISIONS			
P	LTR	DESCRIPTION	DATE	DWN	APVD		
AD	00	SEE SHEET 1	-	-	-		



TOLERANCES FOR ALL PCB LAYOUT DIMENSIONS TO BE ±.002

RA RIGHT ANGLE



TOLERANCES FOR ALL PCB LAYOUT DIMENSIONS TO BE ±.002

VRA VERTICAL RIGHT ANGLE

THIS DRAWING IS A CONTROLLED DOCUMENT.		DWN	11JUL90		TE Connectivity		
DIMENSIONS: INCHES		CHK	20DEC90		NAME		
TOLERANCES UNLESS OTHERWISE SPECIFIED:		APVD	20DEC90		PRODUCT SPEC		
0 PLC ± - 1 PLC ± - 2 PLC ± - 3 PLC ± .010 4 PLC ± - ANGLES ± 3°		APPLICATION SPEC			OUTLINE DRAWING SEALED TOGGLE SWITCH. SINGLE POLE. TST SERIES		
MATERIAL	SEE SPECIFICATIONS	FINISH	SEE SPECIFICATIONS	WEIGHT	-	RESTRICTED TO	
CUSTOMER DRAWING		SCALE	5:1	SHEET	2 of 3	REV	B2

1-1437564-1

4

3

2

1

THIS DRAWING IS UNPUBLISHED. RELEASED FOR PUBLICATION
 © COPYRIGHT - By - ALL RIGHTS RESERVED.

LOC	DIST	REVISIONS			
P	LTR	DESCRIPTION	DATE	DWN	APVD
AD	00	SEE SHEET 1	-	-	-

Technical drawing of the actuator assembly. The top view shows a cylindrical body with a top cap and four pins. Dimensions include a top cap height of .156, a body diameter of .400, and pin diameters of .014 (2X) and .020 (3X). The side view shows a total height of .374 and a base width of .195. A detail view shows a pin with a diameter of $\phi.043$ and a length of .100 (4X).

ACTUATORS

Three perspective views of the actuator assembly labeled 1, 2, and 4. View 1 shows a top view with a diameter of $\phi.100$ and a height of .206. View 2 shows a side view with a diameter of $\phi.100$ and a height of .250. View 4 shows a side view with a diameter of $\phi.100$ and a height of .400.

3-1437564-9	TST11HGSRA2D	OBSOLETE
3-1437564-8	TST11HGSA2D	OBSOLETE
3-1437564-7	TST11GGSRA4D	OBSOLETE
3-1437564-6	TST11GGSRA1D	OBSOLETE
3-1437564-5	TST11GGRA1D	OBSOLETE
3-1437564-4	TST11GGPC4D	OBSOLETE
3-1437564-3	TST11GGPC1D	OBSOLETE
3-1437564-2	TST11FGVRA1D	OBSOLETE
3-1437564-1	TST11FGSRA1D	OBSOLETE
3-1437564-0	TST11FGSPC1D	OBSOLETE
2-1437564-9	TST11FGRA1D	OBSOLETE
2-1437564-8	TST11FGPCV1D	OBSOLETE
2-1437564-7	TST11FGPC1D	OBSOLETE
2-1437564-6	TST11EGVRA1D	OBSOLETE
2-1437564-5	TST11EGSRA2D	OBSOLETE
2-1437564-4	TST11EGSRA1D	OBSOLETE
2-1437564-3	TST11EGRA1D	OBSOLETE
2-1437564-2	TST11EGPCV4D	OBSOLETE
2-1437564-1	TST11EGPCV1D	OBSOLETE
2-1437564-0	TST11EGPC1D	OBSOLETE
1-1437564-9	TST11DGWW1D	OBSOLETE
1-1437564-8	TST11DGVRA2D	OBSOLETE
1-1437564-7	TST11DGVRA1D	
1-1437564-6	TST11DGSRA1D	OBSOLETE
1-1437564-5	TST11DGSRA1D	OBSOLETE
1-1437564-4	TST11DGSPC1D	OBSOLETE
1-1437564-3	TST11DGRA2D	OBSOLETE
1-1437564-1	TST11DGRA1D	
1-1437564-0	TST11DGPCV1D	
1437564-9	TST11DGPC4D	OBSOLETE
1437564-7	TST11DGPC1D	
P/N	ALCO P/N	

TOLERANCES FOR ALL PCB LAYOUT DIMENSIONS TO BE $\pm.002$

PCV

PC WITH VERTICAL SUPPORT BRACKET

THIS DRAWING IS A CONTROLLED DOCUMENT.		DWN	11JUL90	TE Connectivity	
DIMENSIONS: INCHES		CHK	20DEC90	NAME	
TOLERANCES UNLESS OTHERWISE SPECIFIED:		APVD	20DEC90	PRODUCT SPEC	
0 PLC \pm -		APVD	20DEC90	APPLICATION SPEC	
1 PLC \pm -		WEIGHT	-	SIZE	A2
2 PLC \pm -		FINISH	SEE SPECIFICATIONS	CAGE CODE	00779
3 PLC \pm .010		CUSTOMER DRAWING		DRAWING NO	C=1-1437564-1
4 PLC \pm -		SCALE	5:1	SHEET	3 OF 3
ANGLES \pm 3°		REV	B2	RESTRICTED TO	

1471-9 (3/11)

Downloaded From Onevac.com

1-1437564-1

单击下面可查看定价，库存，交付和生命周期等信息

[>>TE Connectivity\(泰科\)](#)