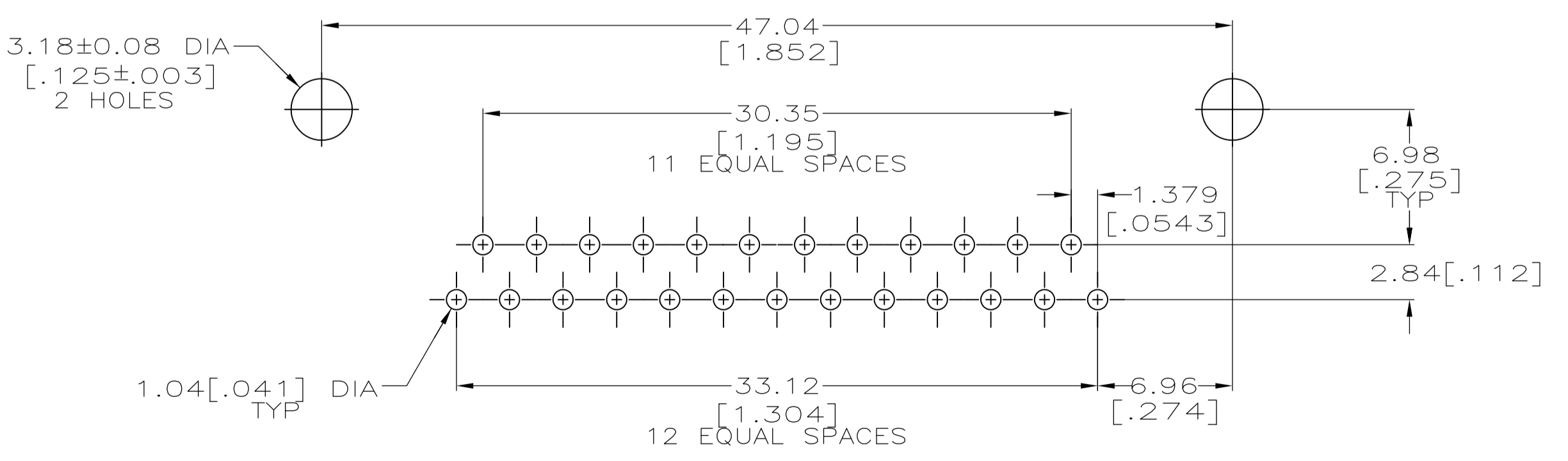
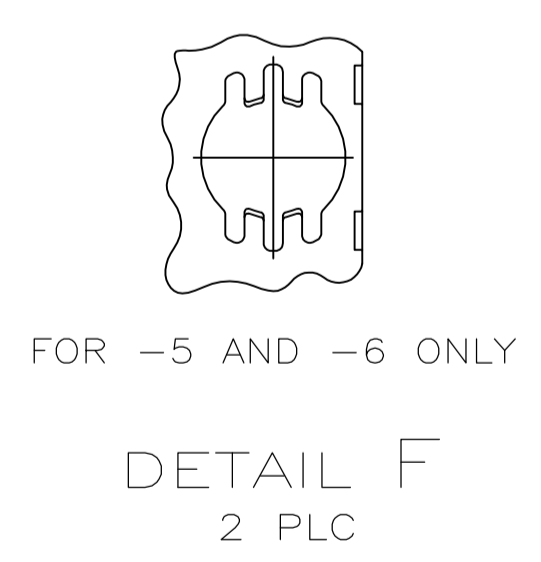
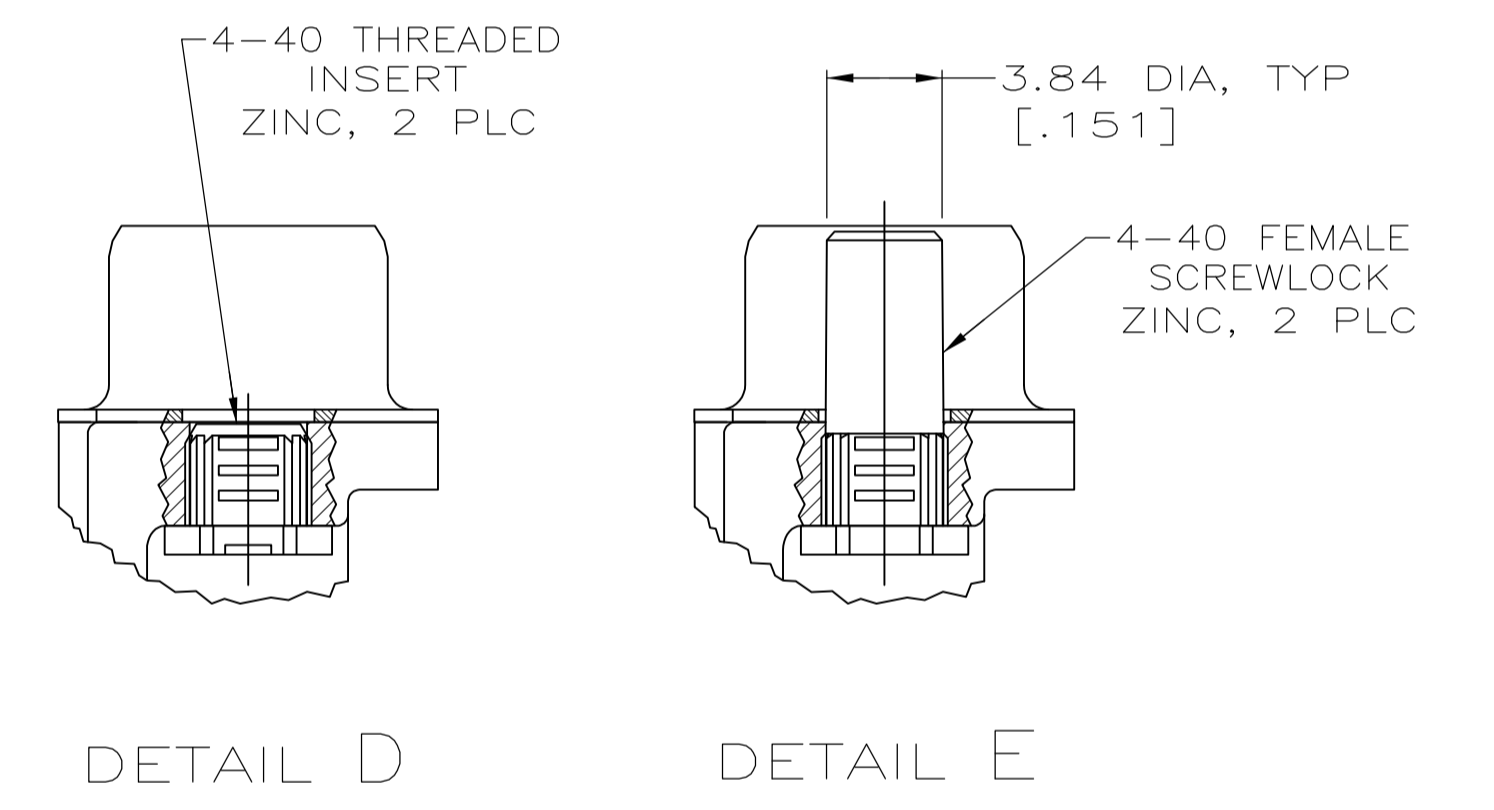
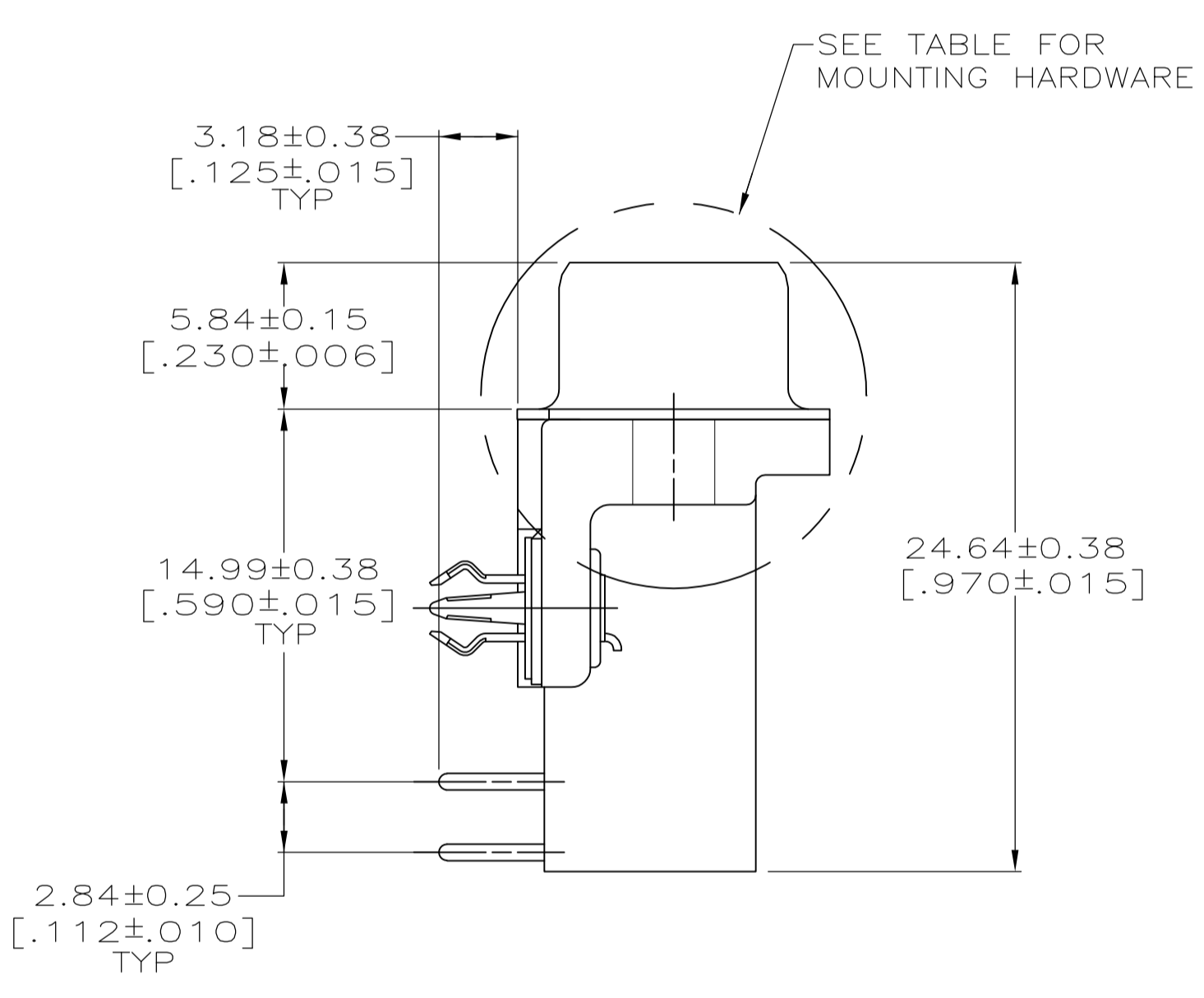
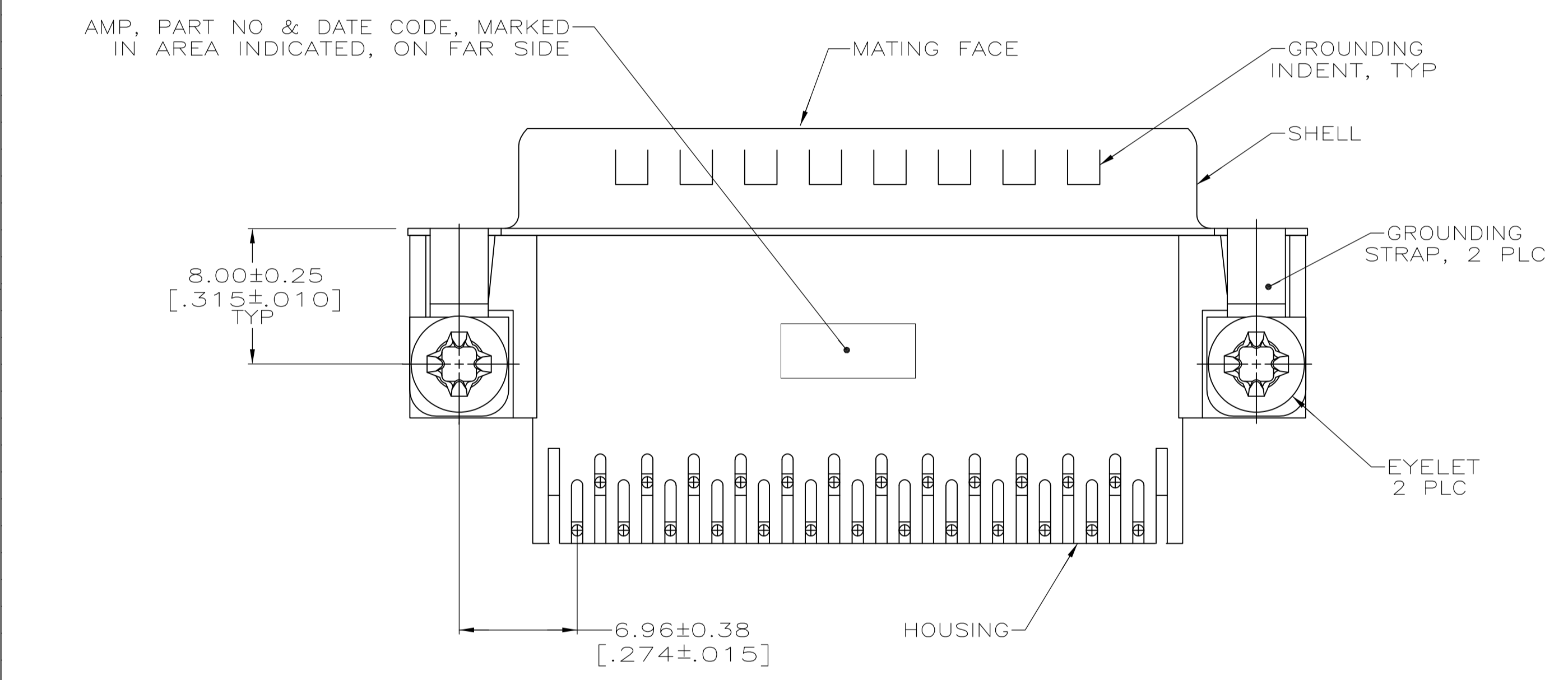


- ⚠ HOUSING: NYLON OR POLYESTER, FLAME RETARDANT 94V-0 RATED, GLASS FILLED, BLACK.  
SHELLS: CARBON STEEL.  
CONTACTS: BRASS.  
BOARDLOCKS: COPPER ALLOY.  
EYELETS: BRASS.
- ⚠ SHELLS: 2.54µm [.000100] MIN TIN OVER 1.27µm [.000050] MIN COPPER.  
EYELETS: 5.08µm [.000200] MIN TIN OVER COPPER FLASH.  
SCREWLOCKS AND INSERTS: CLEAR CHROMATE.  
BOARDLOCKS AND CONTACTS: SEE TABLE.
- ⚠ GOLD FLASH ON THE MATING SURFACES, 2.54µm [.000100] MIN TIN OR TIN-LEAD PLATE ON THE SOLDER END, 1.27µm [.000050] MIN NICKEL UNDERPLATE ON THE ENTIRE CONTACT.
- ⚠ 0.76µm [.000030] MIN GOLD PLATE ON THE MATING SURFACES, 2.54µm [.000100] MIN TIN OR TIN-LEAD PLATE ON THE SOLDER END, 1.27µm [.000050] MIN NICKEL UNDERPLATE ON THE ENTIRE CONTACT  
-OR-  
GOLD FLASH OVER PALLADIUM-NICKEL PLATE, 0.76µm [.000030] MIN TOTAL ON THE MATING SURFACES, 2.54µm [.000100] MIN TIN OR TIN-LEAD PLATE ON THE SOLDER END, 1.27µm [.000050] MIN NICKEL UNDERPLATE ON THE ENTIRE CONTACT.
- ⚠ 5.08µm [.000200] MIN TIN-LEAD OVER 1.27µm [.000050] MIN NICKEL.
- ⚠ 5.08µm [.000200] MIN TIN OVER 1.27µm [.000050] MIN NICKEL.
- ⚠ OBSOLETE PARTS: OBSOLETE CIS STREAMLINING PER D.RENAUD/D.SINISI.



RECOMMENDED P.C. BOARD MOUNTING DIMENSIONS  
P.C. BOARD THICKNESS: 1.57 [.062]

⚠ OBSOLETE	SEE DETAIL D	⚠ 6	⚠ 4	6-747834-7
	SEE DETAIL E	⚠ 5	⚠ 4	747834-6
SUPSD BY 747834-4	SEE DETAIL E	⚠ 5	⚠ 3	747834-5
⚠ SUPERSEDED	SEE DETAIL D	⚠ 5	⚠ 4	747834-4
SUPSD BY 747834-4	SEE DETAIL D	⚠ 5	⚠ 3	747834-3
⚠ OBSOLETE	-	⚠ 5	⚠ 4	747834-2
⚠ OBSOLETE	-	⚠ 5	⚠ 3	747834-1
	MOUNTING HARDWARE	BOARDLOCK FINISH	CONTACT FINISH	PART NUMBER

THIS DRAWING IS A CONTROLLED DOCUMENT. DIMENSIONING AND TOLERANCING PER ASME Y14.5M-2009.

DIMENSIONS: mm [INCHES]	TOLERANCES UNLESS OTHERWISE SPECIFIED:	DIN W.G. LENKER 16-NOV-89	APVD R. STONE 05-FEB-90	NAME M.D. GALLOWAY 06-FEB-90
0 PLC ± -	1 PLC ± -	2 PLC ± -	3 PLC ± 0.13 [.005]	4 PLC ± -
ANGLES ± ± °				
MATERIAL	FINISH	SIZE 114-40010	WEIGHT -	SCALE 4:1
		CAGE CODE 00779	DRAWING NO. 747834	SHEET 1 OF 1
		CUSTOMER DRAWING	REV W	

STE TE Connectivity  
PLUG ASSEMBLY, SIZE 3, 25 POSITION, RIGHT ANGLE, FRONT METAL SHELL, .590 SERIES, BOARDLOCKS, AMPLIMATE® HD-20

单击下面可查看定价，库存，交付和生命周期等信息

[>>TE Connectivity\(泰科\)](#)