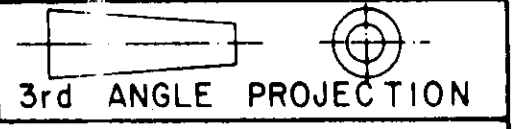


8 7 6 5 4 3 2 1

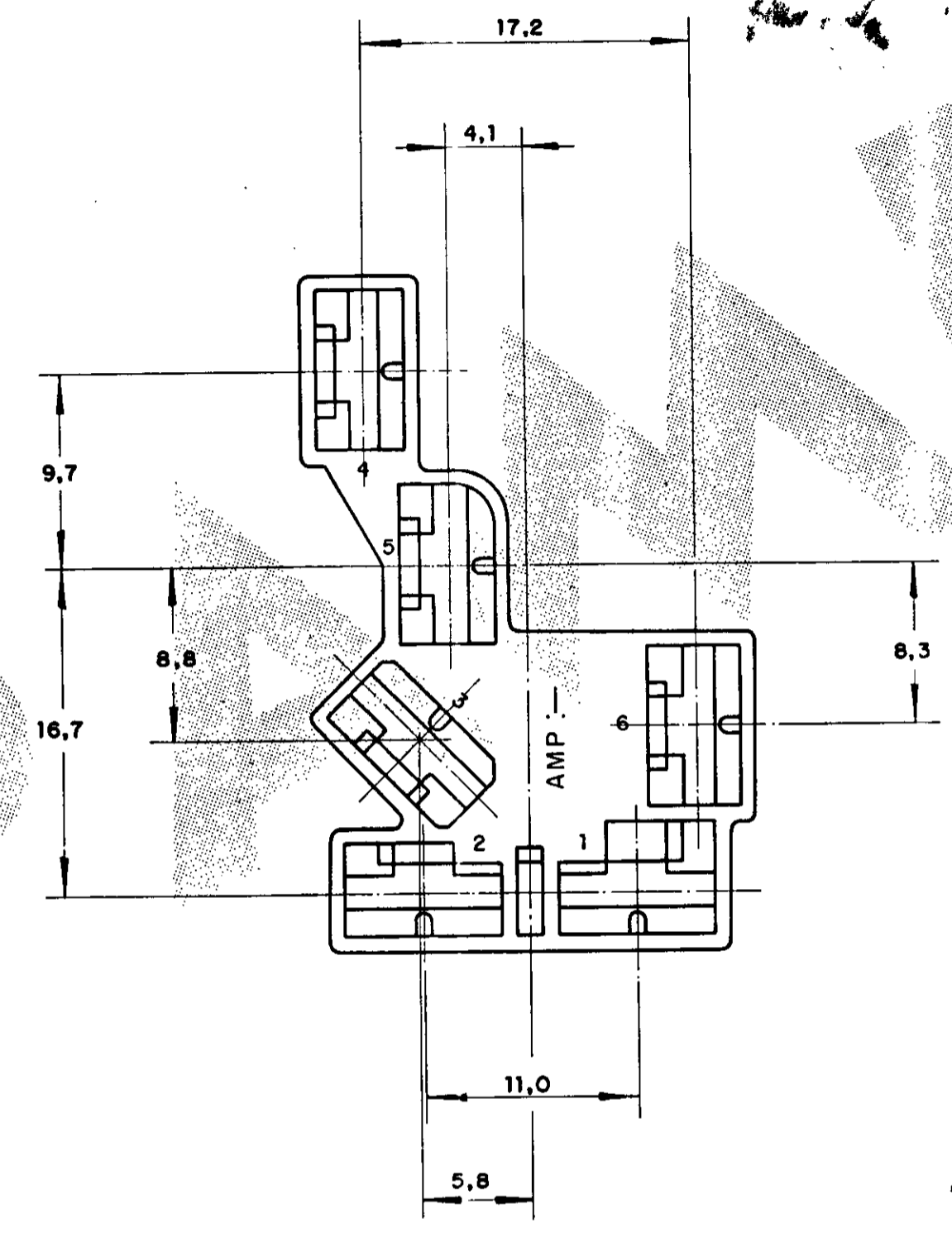
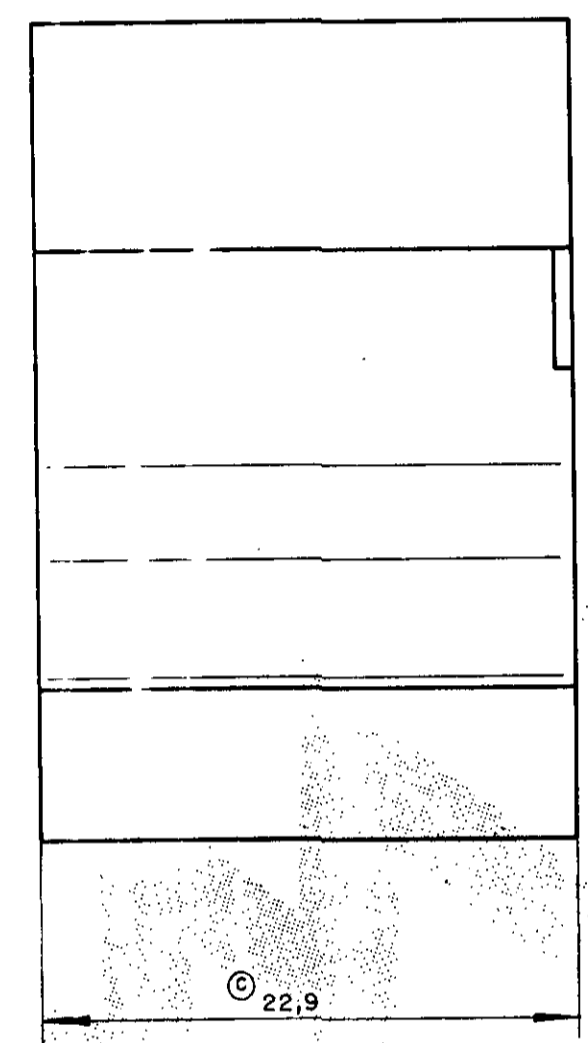
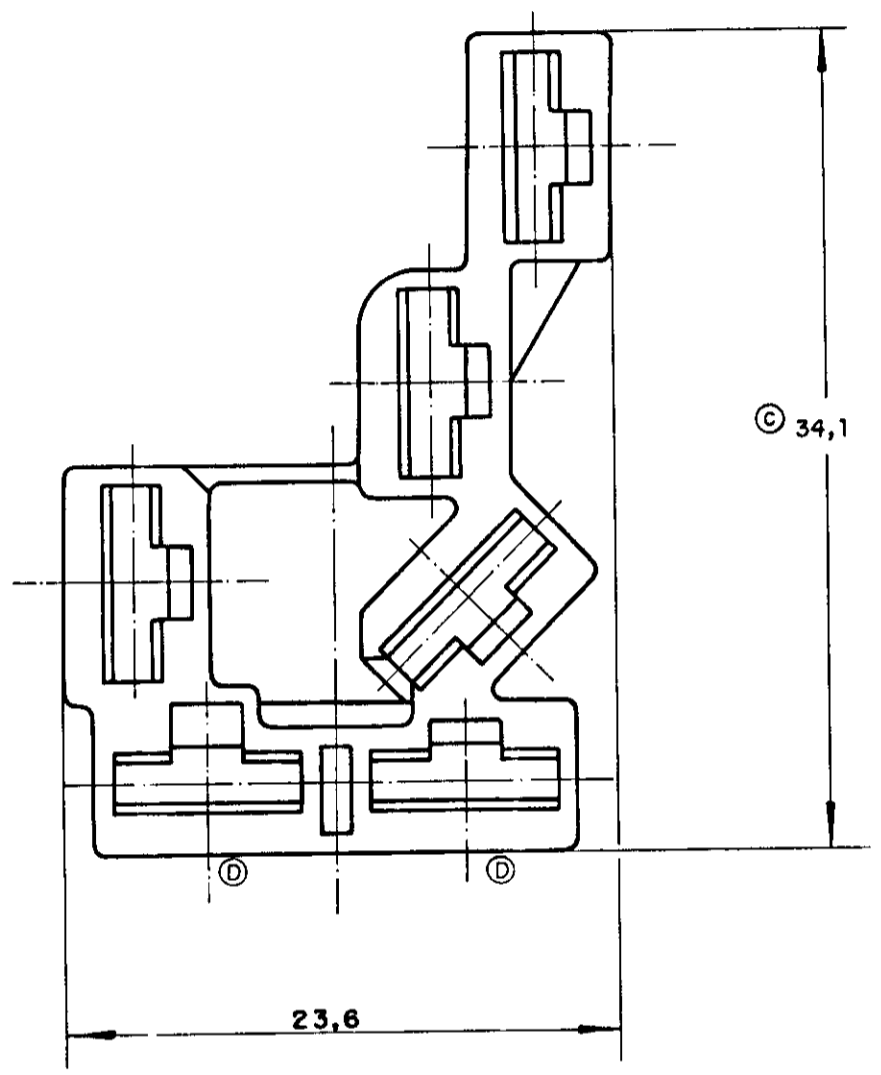
DO NOT SCALE
DIMENSIONS IN mm.

METRIC



C 626 241

G
F
E
D
C
B
A



- ①- SEE RESTRICTED CUSTOMER DRAWING NUMBER 626241-1. ①- VER DESENHO RESTRITO 626241-1.
- ② OBSOLETE PARTS: OBSOLETE CIS STREAMLINING PER D.RENAUD/D.SINISI

② OBSOLETE	PRETO BLACK	P.A. 6.6	626 241 - 3
			① 626 241 - 2
			① 626 241 - 1
PART NUMBER V.W.	FINISH	MATERIAL	PART NUMBER
CUSTOMER DWG for REFERENCE ONLY		THIS DRAWING IS UNPUBLISHED RELEASED FOR PUBLICATION 19 C COPYRIGHT 1983 BY AMP DO BRASIL LTDA. ALL INTERNATIONAL RIGHTS RESERVED AMP PRODUCTS MAY BE COVERED BY U.S. AND FOREIGN PATENTS AND/OR PATENTS PENDING.	
TOLERANCES UNLESS OTHERWISE STATED DEC. ±0,5 ANGLES ±1°		TMS DIA RANGE	WIRE RANGE
DR <i>J. Renaud</i> AUG. 18, 83		AMP do BRASIL LTDA. São Paulo, Brasil	
D1 REV PER ECO-09-026444	KK AEG 17DEC08	DESCRIPTION 6 WAY .250 FASTIN-ON REC. HSG	
D REVISADO EC 415-95	M.R.B. <i>J.R.B.</i> NOV 95	DWG NO A2 C 626 241	
C ERA 250 E 35,7 EON 3625	PF -- 07-01-93	SHEET 1 OF 2	
B REVISADO	G.F.M. T.ABV. 4.6.84		
A REDES. C/ MODIFICAÇÕES	G.F.M. T.A.BV. 18.8.83		
ISS REVISION RECORD	DR CHK DATE APP.		

6 5 4 3 2 1

单击下面可查看定价，库存，交付和生命周期等信息

[>>TE Connectivity\(泰科\)](#)