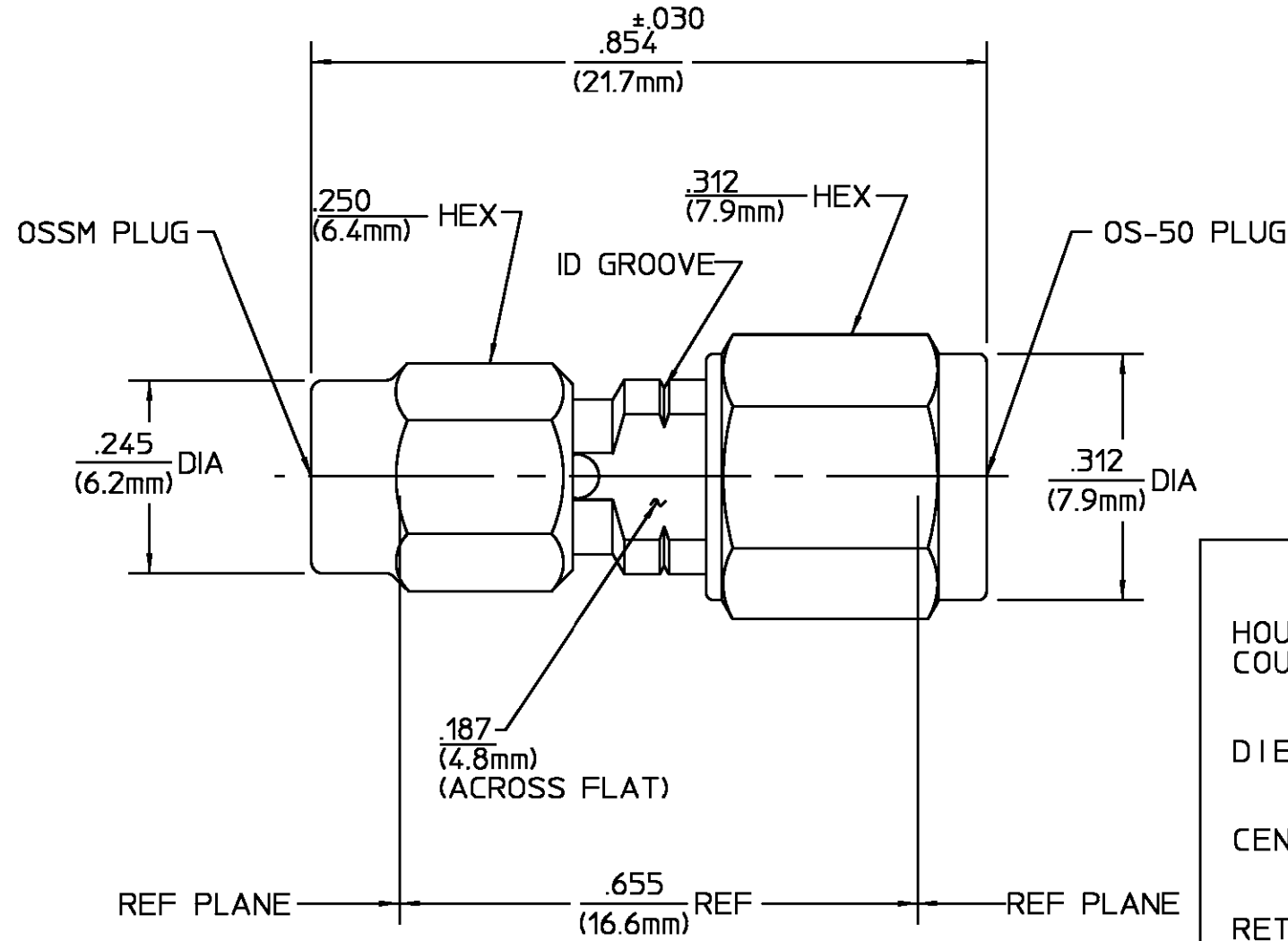


REVISIONS			
REV	DESCRIPTION	DATE	APPROVED
01 ₀	RELEASED	11-26-90	<i>DRY</i>
B	PER EC 0U20-0116-01-02	01NOV01	<i>C. Hoang</i> 01NOV01



HOUSING COUPLING NUT	STAINLESS STEEL PER ASTM-A484 AND ASTM-A582, TYPE 303	PASSIVATE PER ASTM-A380
DIELECTRIC	TFE FLUOROCARBON PER ASTM-D-1457	N/A
CENTER CONTACT	BRASS PER ASTM-B-16, HALF HARD	GOLD PLATE PER MIL-G-45204
RETAINING RING	BERYLLIUM COPPER PER ASTM B 194, ALLOY C17200, CONDITION H	N/A
GASKET	SILICONE RUBBER PER ZZ-R-765	N/A

COMPONENT	MATERIAL	FINISH
-----------	----------	--------

UNLESS OTHERWISE SPECIFIED DIMENSIONS ARE IN INCHES TOLERANCE ON FRAC. DEC. ANGLES ± 1/64 ± .005 ± 1°	DRAWN BY: CKM DATE: 11/12/90	AMP Incorporated 140 Fourth Avenue Waltham, MA 02451-7599
	CHECKED BY: M.Y. DATE: 11-19-90	
	APP'D BY: <i>DRY</i> DATE: 11-26-90	

NOTES:
1. CAPTURED CENTER CONTACT

These drawings and specifications are the property of Omni Spectra Incorporated and shall not be reproduced or copied or used in whole or in part as the basis for the manufacture or sale of item(s) without written permission.	USE ASSY PROCEDURE	TITLE OS50 PLUG TO OSSM PLUG ADAPTER	
	NO. AP. N/A	SIZE B	REV 01 ₀
		CODE IDENT NO. 26805	8581-2141-02
	SCALE 5:1	SHEET 1 OF 1	

CUSTOMER DRAWING

AMP PART # 1063388-1
SHEET 1 OF 1 REV B

单击下面可查看定价，库存，交付和生命周期等信息

[>>TE Connectivity\(泰科\)](#)