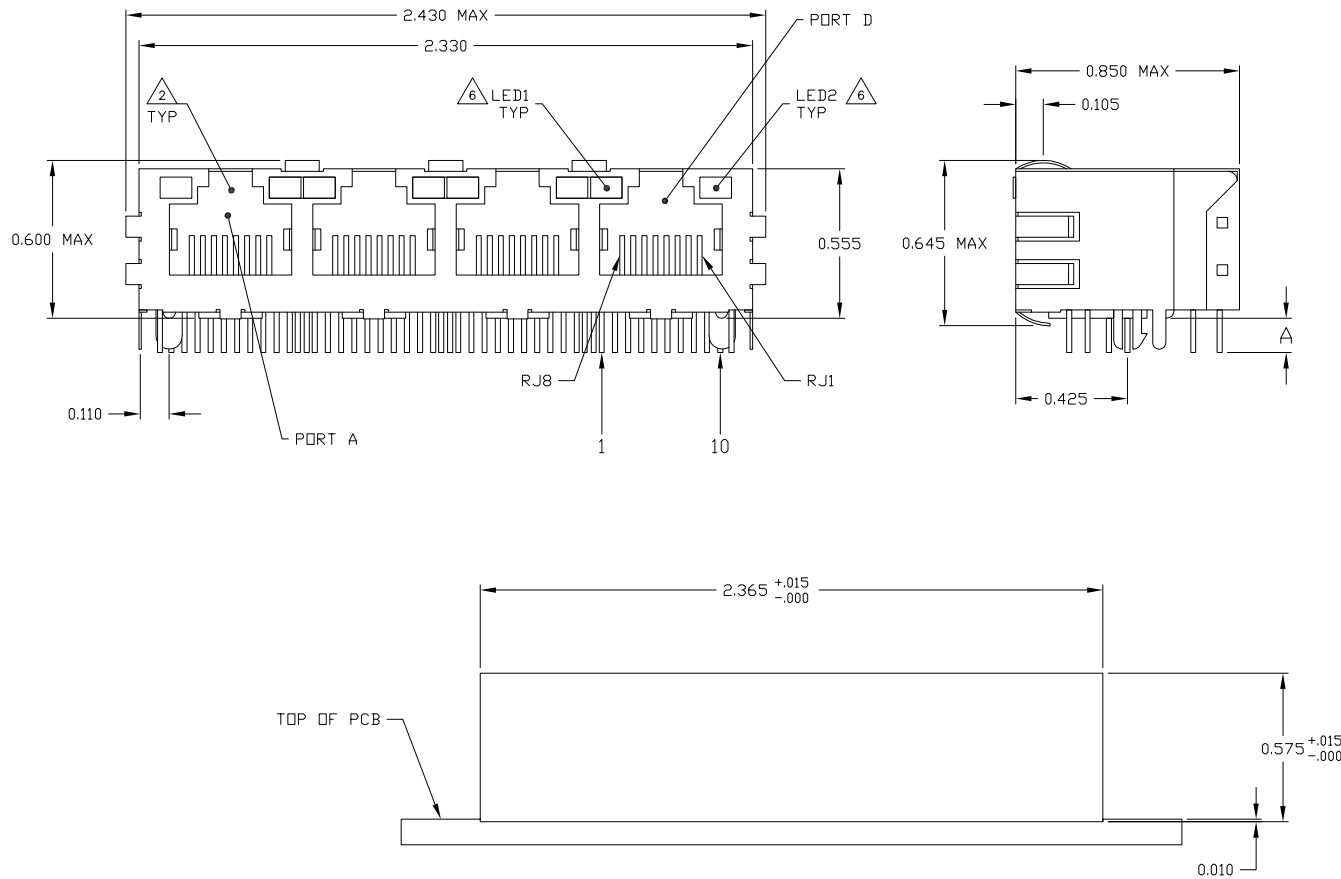
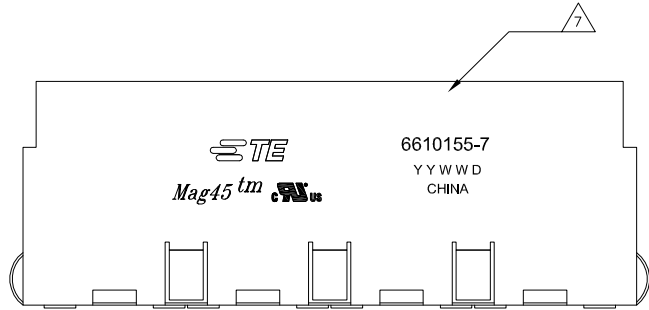


LOC		REV		REVISIONS	
AA	22	DATE	DESCRIPTION	DATE	BY
D		21NOV2008	ECO-08-030703	VL	LR
E		20MAY2011	ECO-11-013427	EL	LR

MECHANICAL:



1X4 SUGGESTED PANEL CUTOUT

- 1 MATERIALS:
 - HOUSING - THERMOPLASTIC PET POLYESTER FLAMMABILITY RATING UL 94V-0.
 - SHIELD - 0.010" THICK, C26800 BRASS PREPLATED WITH 30μINCH MIN SEMI-BRIGHT NICKEL. SOLDER TABS POST DIPPED WITH 100μINCH MIN SAC SOLDER.
 - MOD JACK CONTACTS - 0.0157" X 0.018" PHOSPHOR BRONZE, 50μINCH MIN OVERALL NICKEL UNDERPLATE WITH SELECT 50μINCH MIN HARD GOLD FINISH PLATE. SOLDER TAILS WITH 100μINCH MIN MATTE TIN AND/OR SAC SOLDER DIP.
 - LIGHT EMITTING DIODE(LED) - DIFFUSED EPOXY LENS, 0.020" X 0.020" CARBON STEEL WIREFRAME LEADS PRE-PLATED WITH 80μINCH SILVER OVER 40μINCH NICKEL UNDERPLATE OVER 40μINCH COPPER UNDERPLATE. POST-PLATED WITH 100μIN MIN MATTE TIN AND/OR SAC SOLDER DIP OR PURE TIN SOLDER DIP.

- 2 RJ45 JACK CAVITY CONFORMS TO FCC RULES AND REGULATIONS PART 68, SUB PART F.

- 3 MAGNETICS
 - IMPEDANCE: 100 OHMS
 - TURNS RATIO (CHIP: CABLE): 1:1 ALL FOUR PAIRS
 - OPEN CIRCUIT INDUCTANCE (OCL): 350μH MIN @100kHz, 0.1VRMS, 8mADC BIAS FROM 0°C TO 70°C, ALL FOUR PAIRS
 - ALL FOUR PAIRS BI-DIRECTIONAL
 - PERFORMANCE @ 25°C:
 - INSERTION LOSS (IL): 1.1dB MAX FROM 0.5MHZ TO 100MHZ
 - RETURN LOSS (RL): 18dB MIN FROM 0.5MHZ TO 40MHZ
 - 12-20LOG(f/80)dB MIN FROM 40.1MHZ TO 100MHZ
 - CROSSTALK ATTENUATION: 35dB MIN FROM 0.5MHZ TO 4.0MHZ
 - 33-20*LOG(f/50)dB MIN FROM 4.0.1MHZ TO 100MHZ
 - COMMON MODE REJECTION RATIO (CMRR): 30dB MIN FROM 0.5MHZ TO 100MHZ
 - ISOLATION VOLTAGE: 2250VDC (MAX) FOR 60 SECONDS WITH A RISE TIME OF 500V/SEC AND WITH ALL PORTS CONNECTED.

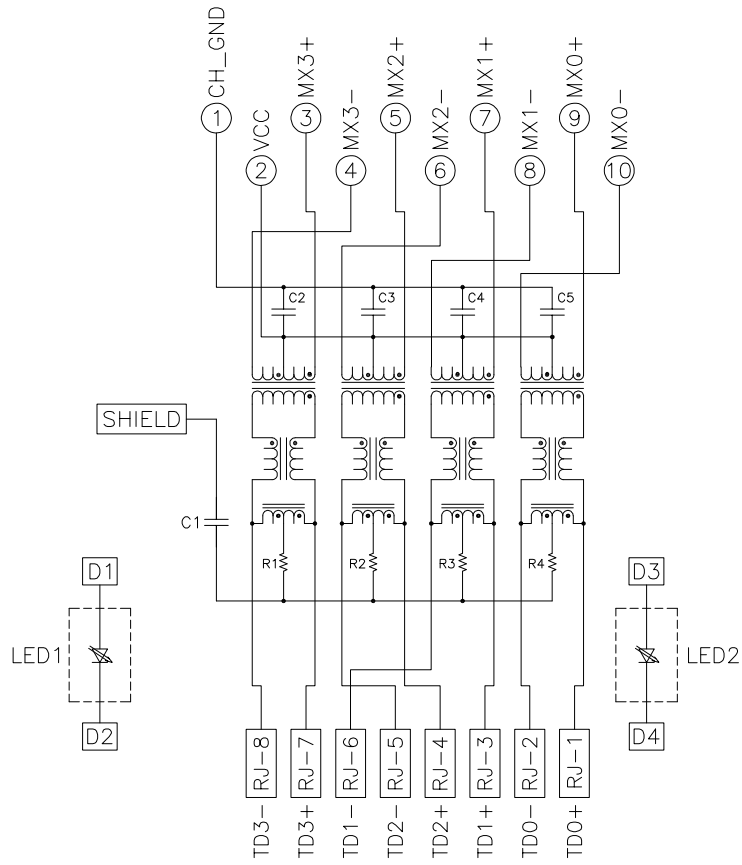
- 4 OPERATING TEMPERATURE: FROM 0°C TO +70°C.
- 5 INDICATED MAGNETIC CONNECTIONS ARE SYMMETRICAL TO SUPPORT AUTO-MDI/MDIX.
- 6 LEDs WITHOUT BUILT-IN RESISTOR
 - LEDS ARE DRIVEN WITH CONSTANT CURRENT AT APPROX 20 mA
 - LED COLOR: DOMINANT WAVELENGTH (λD): GREEN 568 nm TYP @ IF=20 mA
 - FORWARD VOLTAGE (VF): GREEN 2.2V TYP @ IF=20 mA
 - DOMINANT WAVELENGTH (λD): ORANGE 605 nm TYP @ IF=20 mA
 - FORWARD VOLTAGE (VF): ORANGE 2.1V TYP @ IF=20 mA
- 7 TE CONNECTIVITY LOGO, PART NUMBER, DATE CODE, COUNTRY OF ORIGIN AND AGENCY APPROVAL MARKING IN APPROXIMATE LOCATION SHOWN.

- 8 THESE PARTS ARE RECOMMENDED FOR WAVE SOLDERING PROCESS, PREHEAT TEMPERATURE IS 120°C TO 160°C, 120 SECONDS TO 180 SECONDS, PEAK WAVE SOLDERING TEMPERATURE IS 260°C MAX, 10 SECONDS MAX.

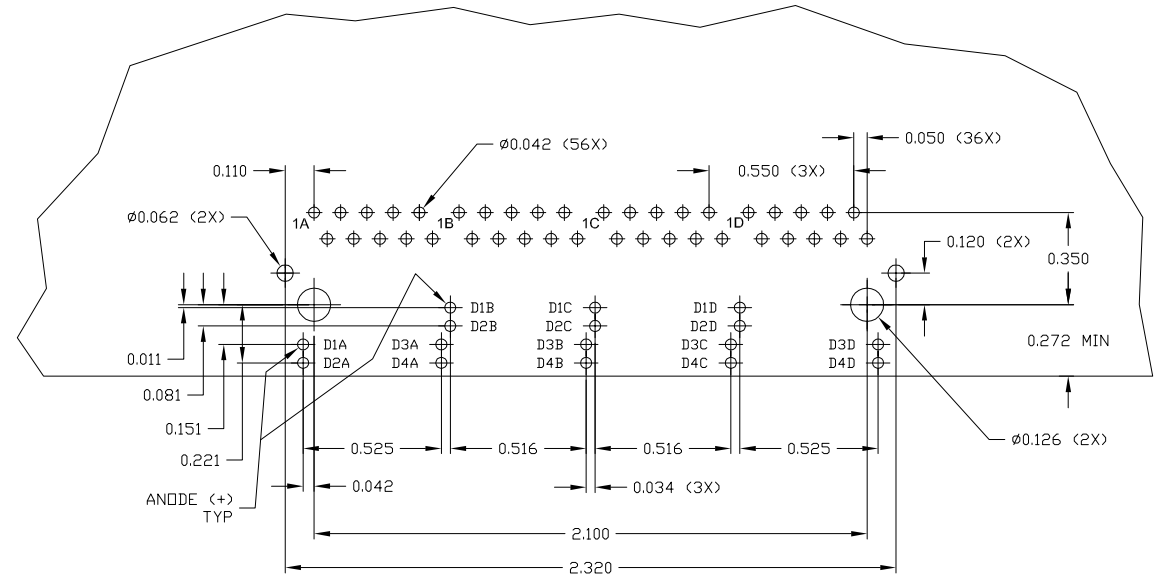
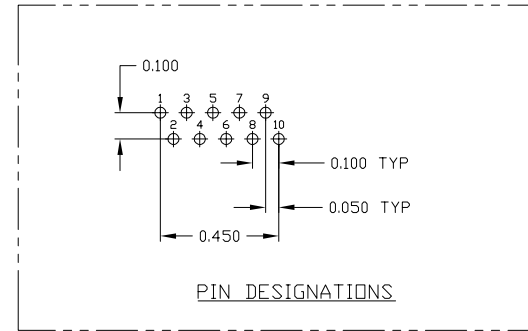
0.160±0.010	GREEN	GREEN	1-6610155-5
0.145±0.010	GREEN	ORANGE	1-6610155-2
0.145±0.010	GREEN	GREEN	6610155-7
DIM "A"	LED1	LED2	PART NUMBER

DIMENSIONS:		REV. ATTADIA - 10/20/2008		TE Connectivity	
INCHES	NO. PARTS	REV. DATE	NO. PARTS	REV. DATE	REV. DATE
0.160 ± 0.010	1	1	1	1	1
0.145 ± 0.010	2	2	2	2	2
0.145 ± 0.010	3	3	3	3	3
0.145 ± 0.010	4	4	4	4	4
0.145 ± 0.010	5	5	5	5	5
0.145 ± 0.010	6	6	6	6	6
0.145 ± 0.010	7	7	7	7	7
0.145 ± 0.010	8	8	8	8	8
0.145 ± 0.010	9	9	9	9	9
0.145 ± 0.010	10	10	10	10	10
0.145 ± 0.010	11	11	11	11	11
0.145 ± 0.010	12	12	12	12	12
0.145 ± 0.010	13	13	13	13	13
0.145 ± 0.010	14	14	14	14	14
0.145 ± 0.010	15	15	15	15	15
0.145 ± 0.010	16	16	16	16	16
0.145 ± 0.010	17	17	17	17	17
0.145 ± 0.010	18	18	18	18	18
0.145 ± 0.010	19	19	19	19	19
0.145 ± 0.010	20	20	20	20	20
0.145 ± 0.010	21	21	21	21	21
0.145 ± 0.010	22	22	22	22	22
0.145 ± 0.010	23	23	23	23	23
0.145 ± 0.010	24	24	24	24	24
0.145 ± 0.010	25	25	25	25	25
0.145 ± 0.010	26	26	26	26	26
0.145 ± 0.010	27	27	27	27	27
0.145 ± 0.010	28	28	28	28	28
0.145 ± 0.010	29	29	29	29	29
0.145 ± 0.010	30	30	30	30	30
0.145 ± 0.010	31	31	31	31	31
0.145 ± 0.010	32	32	32	32	32
0.145 ± 0.010	33	33	33	33	33
0.145 ± 0.010	34	34	34	34	34
0.145 ± 0.010	35	35	35	35	35
0.145 ± 0.010	36	36	36	36	36
0.145 ± 0.010	37	37	37	37	37
0.145 ± 0.010	38	38	38	38	38
0.145 ± 0.010	39	39	39	39	39
0.145 ± 0.010	40	40	40	40	40
0.145 ± 0.010	41	41	41	41	41
0.145 ± 0.010	42	42	42	42	42
0.145 ± 0.010	43	43	43	43	43
0.145 ± 0.010	44	44	44	44	44
0.145 ± 0.010	45	45	45	45	45
0.145 ± 0.010	46	46	46	46	46
0.145 ± 0.010	47	47	47	47	47
0.145 ± 0.010	48	48	48	48	48
0.145 ± 0.010	49	49	49	49	49
0.145 ± 0.010	50	50	50	50	50
0.145 ± 0.010	51	51	51	51	51
0.145 ± 0.010	52	52	52	52	52
0.145 ± 0.010	53	53	53	53	53
0.145 ± 0.010	54	54	54	54	54
0.145 ± 0.010	55	55	55	55	55
0.145 ± 0.010	56	56	56	56	56
0.145 ± 0.010	57	57	57	57	57
0.145 ± 0.010	58	58	58	58	58
0.145 ± 0.010	59	59	59	59	59
0.145 ± 0.010	60	60	60	60	60
0.145 ± 0.010	61	61	61	61	61
0.145 ± 0.010	62	62	62	62	62
0.145 ± 0.010	63	63	63	63	63
0.145 ± 0.010	64	64	64	64	64
0.145 ± 0.010	65	65	65	65	65
0.145 ± 0.010	66	66	66	66	66
0.145 ± 0.010	67	67	67	67	67
0.145 ± 0.010	68	68	68	68	68
0.145 ± 0.010	69	69	69	69	69
0.145 ± 0.010	70	70	70	70	70
0.145 ± 0.010	71	71	71	71	71
0.145 ± 0.010	72	72	72	72	72
0.145 ± 0.010	73	73	73	73	73
0.145 ± 0.010	74	74	74	74	74
0.145 ± 0.010	75	75	75	75	75
0.145 ± 0.010	76	76	76	76	76
0.145 ± 0.010	77	77	77	77	77
0.145 ± 0.010	78	78	78	78	78
0.145 ± 0.010	79	79	79	79	79
0.145 ± 0.010	80	80	80	80	80
0.145 ± 0.010	81	81	81	81	81
0.145 ± 0.010	82	82	82	82	82
0.145 ± 0.010	83	83	83	83	83
0.145 ± 0.010	84	84	84	84	84
0.145 ± 0.010	85	85	85	85	85
0.145 ± 0.010	86	86	86	86	86
0.145 ± 0.010	87	87	87	87	87
0.145 ± 0.010	88	88	88	88	88
0.145 ± 0.010	89	89	89	89	89
0.145 ± 0.010	90	90	90	90	90
0.145 ± 0.010	91	91	91	91	91
0.145 ± 0.010	92	92	92	92	92
0.145 ± 0.010	93	93	93	93	93
0.145 ± 0.010	94	94	94	94	94
0.145 ± 0.010	95	95	95	95	95
0.145 ± 0.010	96	96	96	96	96
0.145 ± 0.010	97	97	97	97	97
0.145 ± 0.010	98	98	98	98	98
0.145 ± 0.010	99	99	99	99	99
0.145 ± 0.010	100	100	100	100	100
0.145 ± 0.010	101	101	101	101	101
0.145 ± 0.010	102	102	102	102	102
0.145 ± 0.010	103	103	103	103	103
0.145 ± 0.010	104	104	104	104	104
0.145 ± 0.010	105	105	105	105	105
0.145 ± 0.010	106	106	106	106	106
0.145 ± 0.010	107	107	107	107	107
0.145 ± 0.010	108	108	108	108	108
0.145 ± 0.010	109	109	109	109	109
0.145 ± 0.010	110	110	110	110	110
0.145 ± 0.010	111	111	111	111	111
0.145 ± 0.010	112	112	112	112	112
0.145 ± 0.010	113	113	113	113	113
0.145 ± 0.010	114	114	114	114	114
0.145 ± 0.010	115	115	115	115	115
0.145 ± 0.010	116	116	116	116	116
0.145 ± 0.010	117	117	117	117	117
0.145 ± 0.010	118	118	118	118	118
0.145 ± 0.010	119	119	119	119	119
0.145 ± 0.010	120	120	120	120	120
0.145 ± 0.010	121	121	121	121	121
0.145 ± 0.010	122	122	122	122	122
0.145 ± 0.010	123	123	123	123	123
0.145 ± 0.010	124	124	124	124	124
0.145 ± 0.010	125	125	125	125	125
0.145 ± 0.010	126	126	126	126	126
0.145 ± 0.010	127	127	127	127	127
0.145 ± 0.010	128	128	128	128	128
0.145 ± 0.010	129	129	129	129	129
0.145 ± 0.010	130	130	130	130	130
0.145 ± 0.010	131	131	131	131	131
0.145 ± 0.010	132	132	132	132	132
0.145 ± 0.010	133	133	133	133	133
0.145 ± 0.010	134	134	134	134	134
0.145 ± 0.010	135	135	135	135	135
0.145 ± 0.010	136	136	136	136	136
0.145 ± 0.010	137	137	137	137	137
0.145 ± 0.010	138	138	138	138	138
0.145 ± 0.010	139	139	139	139	139
0.145 ± 0.010	140	140	140	140	140
0.145 ± 0.010	141	141	141	141	141
0.145 ± 0.010	142	142	142	142	142
0.145 ± 0.010	143	143	143	143	143
0.145 ± 0.010	144	144	144	144	144
0.145 ± 0.010	145	145	145	145	145
0.145 ± 0.010	146	146	146	146	146
0.145 ± 0.010	147	147	147	147	147
0.145 ± 0.010	148	148	148	148	148
0.145 ± 0.010	149	149	149	149	149
0.145 ± 0.010					

7G05 SERIES GIGABIT CIRCUIT



C1 = 1000pF, 2kV DECOUPLING CAPACITOR
 R1-R4 = 75 OHMS, 1/16W RESISTORS
 C2-C5 = 0.1µF, 10%, 50V, X7R CAPACITORS



SUGGESTED PCB LAYOUT
 (Component Side)

THIS DRAWING IS A CONTROLLED DOCUMENT.		REV. 01	DATE 10/20/2005	BY: ATTADIA	10/20/2005
DRAWN BY: FAROLE		CHK. FAROLE	10/20/2005		
DIMENSIONS: INCHES					
0.100	± 0.005				
0.150	± 0.005				
0.200	± 0.005				
0.300	± 0.005				
0.400	± 0.005				
MATERIAL: -					
FINISH: -					
WEIGHT: -					
CUSTOMER DRAWING		SCALE: 4:1	SHEET: 2 of 2	REV: F	

单击下面可查看定价，库存，交付和生命周期等信息

[>>TE Connectivity\(泰科\)](#)