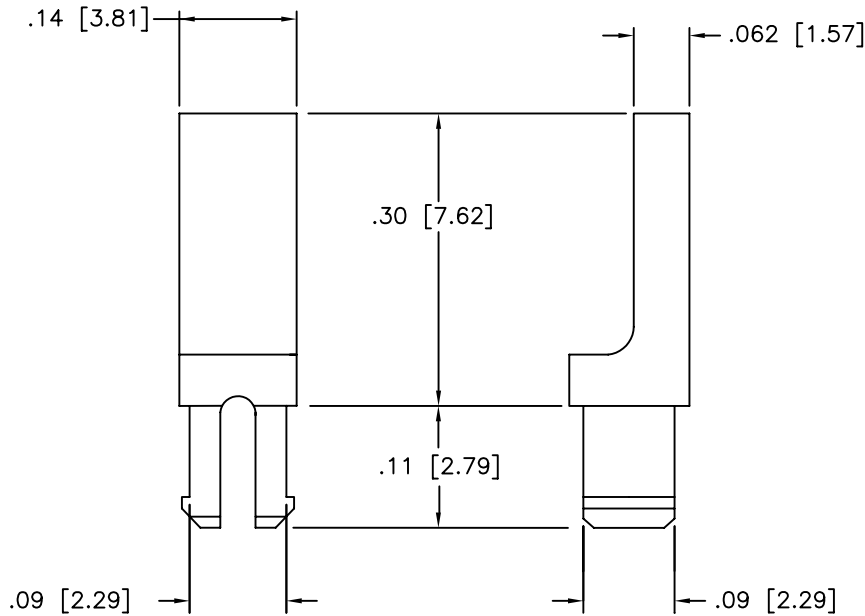


THIS DRAWING AND THE INFORMATION SET FORTH HEREON ARE THE PROPERTY OF TYCO ELECTRONICS CORPORATION AND ARE TO BE HELD IN TRUST AND CONFIDENCE. PUBLICATION, DUPLICATION, DISCLOSURE OR USE FOR ANY PURPOSE NOT EXPRESSLY AUTHORIZED IN WRITING BY TYCO ELECTRONICS CORPORATION IS PROHIBITED.

REVISION


REV	DESCRIPTION	DATE	APPROVED
E	REVISED PER ECN T-18229	93-JUN-01	J.BLAIR
F	REDRAWN PER DCR# C040886	August/12/04	M.HIGGY

If this document is printed it becomes uncontrolled.
Check for the latest revision.






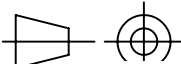
NOTES:

1. PART USED FOR KEYING ALL MTC CONNECTOR ASSEMBLIES.

 WEIGHT: 0.0002 Lbs. [0.091 gm.] MAXIMUM.

SPECIFICATION CONTROL DRAWING

© 2004 Tyco Electronics Corporation.
All rights reserved

ITEM	QTY.	PART NO	DWG OR SPEC NO	DESCRIPTION
PARTS LIST				
UNLESS OTHERWISE SPECIFIED DIMENSIONS ARE INCHES. METRIC DIMENSIONS ARE IN BRACKETS. DECIMAL TOLERANCES .XXX ± .005 [.13 mm] .XX ± .01 [.25 mm] .X ± [mm] ANGLE TOLERANCE .X ±		DRAWN ZS.ORBAN APPROVED M.HIGGY MATERIAL FINISH	DATE August/4/04 DATE August/4/04	 TYCO ELECTRONICS 300 Constitution Drive Menlo Park, CA. 94025 USA  TITLE <h2 style="text-align: center;">MTC KEYING PIN</h2>
WEIGHT		THIRD ANGLE PROJECTION 		SIZE A CAGE CODE: 06090 DWG. NO. D-659-0045 F
CAD FILE C040886.DWG		Downloaded From Oneyac.com : THIS DRAWING SHEET 1 OF 1		

单击下面可查看定价，库存，交付和生命周期等信息

[>>TE Connectivity\(泰科\)](#)