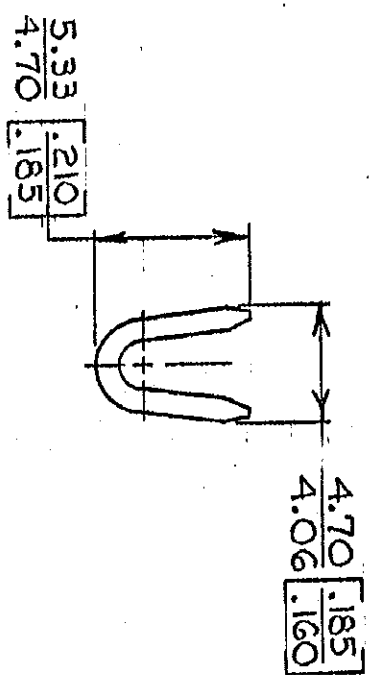
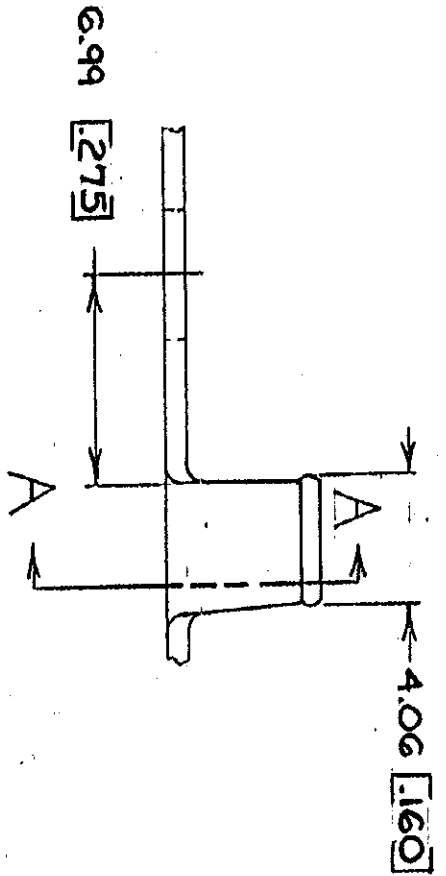
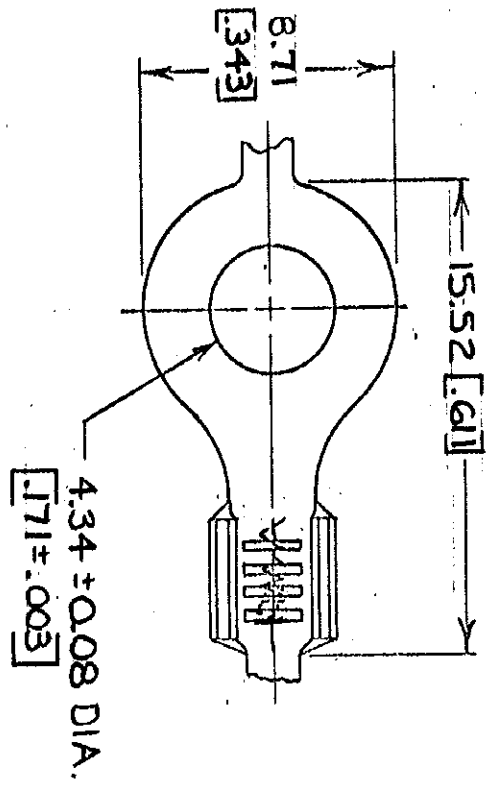


© COPYRIGHT 1965 BY AMP INCORPORATED, HARRISBURG, PA.  
 ALL INTERNATIONAL RIGHTS RESERVED. AMP INCORPORATED PRODUCTS  
 COVERED BY U. S. AND FOREIGN PATENTS AND/OR PATENTS PENDING.



SECT A-A

- 1. CONTINUOUS STRIP, ON REELS.
- 2. DIMENSIONS IN BRACKETS ARE IN INCHES.

**METRIC**

REVISIONS		DATE	APPROVED
1	REDRAWN & REVISED	9/26/78	[Signature]
2	REV PER AF-6785	9/29/78	[Signature]

UNLESS OTHERWISE SPECIFIED DIMENSIONS ARE IN MILLIMETERS TOLERANCES ON DECIMALS ARE ±0.05 ANGLES 1°	CONTRACT NO.	NAME	AMP INCORPORATED Harrisburg, Pa.
M4 #8	08-20mm <sup>2</sup> [8-14]	TIN FINISH	076 BRASS [030] MATERIAL
STUD SIZE	WIRE SIZE	FINISH	MATERIAL
DR [Signature]	4-26-78	DR [Signature]	7-19-78
CHK [Signature]	7-19-78	APPD [Signature]	8-1-78
APPD [Signature]	8-1-78	DSGN APPD	OTHER APPD
FINISH	SEE TABLE	SIZE	B
SCALE	00779	CODE IDENT NO	40517
OTHER APPD		DRAWING NO	

单击下面可查看定价，库存，交付和生命周期等信息

[>>TE Connectivity\(泰科\)](#)