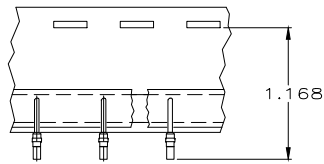
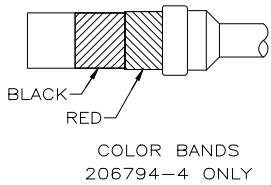
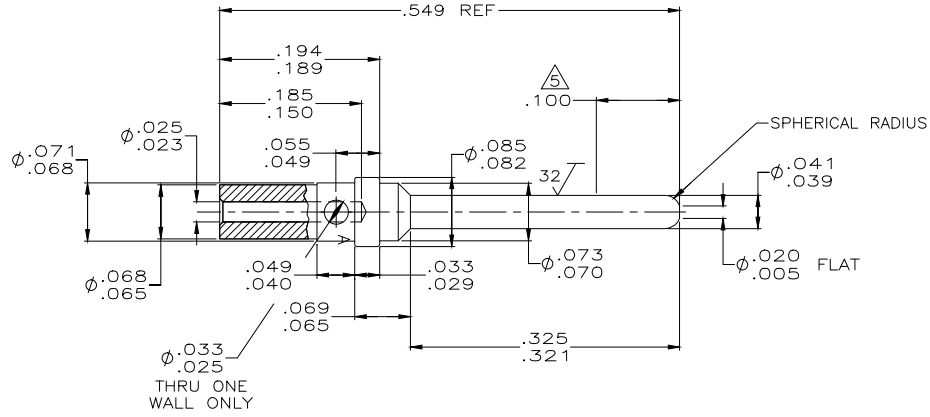


THIS DRAWING IS UNPUBLISHED. RELEASED FOR PUBLICATION
 © COPYRIGHT - By - ALL RIGHTS RESERVED.

REVISIONS				
P	LTR	DESCRIPTION	DATE	DWN APVD
H	REV PER ECO	17-002439	11MAR11	CT RL

1. ALL DIMENSIONS APPLY AFTER PLATING.
2. THIS PART COMPLIES WITH SPEC. MIL-C-24308/11, EXCEPT WIRE BARREL.
3. ALL DIAMETERS CONCENTRIC WITH EACH OTHER WITHIN .004 T.I.R.
4. ALL SURFACES HAVE A 63 SURFACE FINISH OR BETTER UNLESS OTHERWISE NOTED.
5. POINT OF PLATING MEASUREMENT.
6. FINISH: PLATED GOLD PER ASTM-B-488 OVER COPPER PER AMS-2418.
7. RESTRICTED TO SPACE SYSTEMS LORAL.
8. FINISH: PLATED GOLD PER ASTM-B-488 OVER NICKEL PER AMS-QQ-N-290.



TAPE MOUNTED
 206794-3 ONLY
 SCALE: NTS

7	NO COLOR CODE	8	COPPER ALLOY	206794-7
7	NO COLOR CODE	6	COPPER ALLOY	206794-6
SUPERSEDED BY 206794-3				
	TAPE MOUNTED	-	206794-4	206794-5
	COLOR CODED	-	206794-2	206794-4
	TAPE MOUNTED	-	206794-2	206794-3
	AS SHOWN	6	COPPER ALLOY #187	206794-2
	REMARKS	FINISH	MATERIAL	PART NUMBER

DIMENSIONS:		TOLERANCES UNLESS OTHERWISE SPECIFIED:		DWN		C.C. THOMAS		7/24/00	
INCHES		0 PLC ± -		CHK		R.GROSS		9-5-00	
		1 PLC ± -		APVD		R.GROSS		9-5-00	
		2 PLC ± -		PRODUCT SPEC		NAME		-	
		3 PLC ± .025		APPLICATION SPEC		-		-	
		4 PLC ± ± 2"		SIZE		CAGE CODE		DRAWING NO	
MATERIAL		FINISH		WEIGHT		A2		00779	
COPPER ALLOY		SEE TABLE		CUSTOMER DRAWING		C=206794		RESTRICTED TO	
						SCALE		10:1	
						SHEET		1 of 1	
						REV		H	

单击下面可查看定价，库存，交付和生命周期等信息

[>>TE Connectivity\(泰科\)](#)