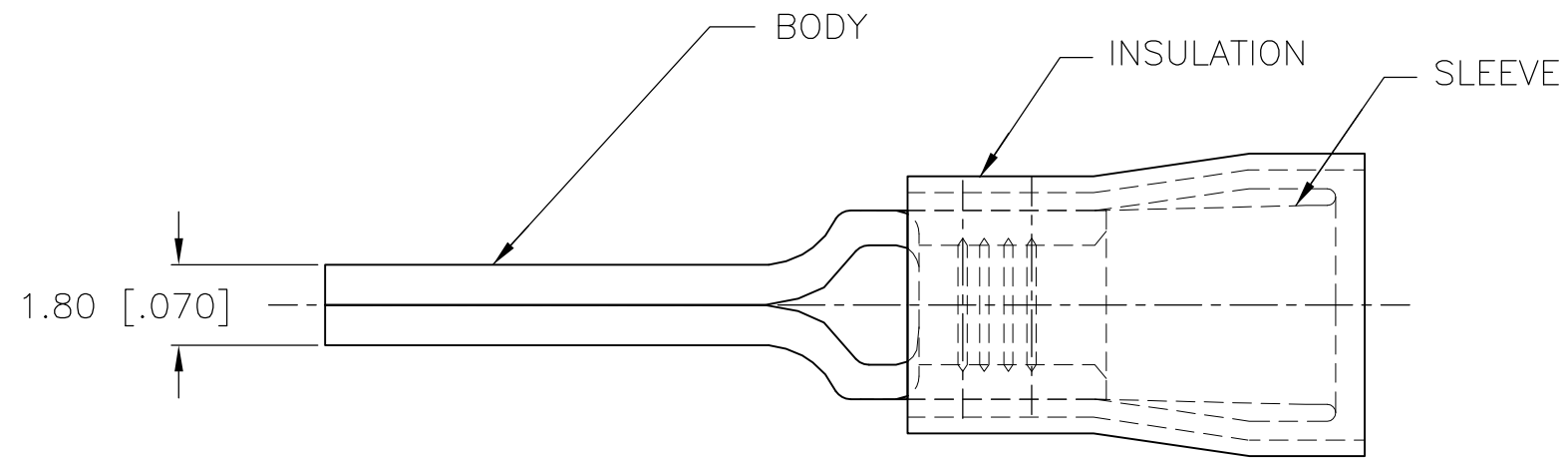


THIS DRAWING IS UNPUBLISHED. RELEASED FOR PUBLICATION  
 © COPYRIGHT - By - ALL RIGHTS RESERVED.

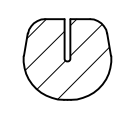
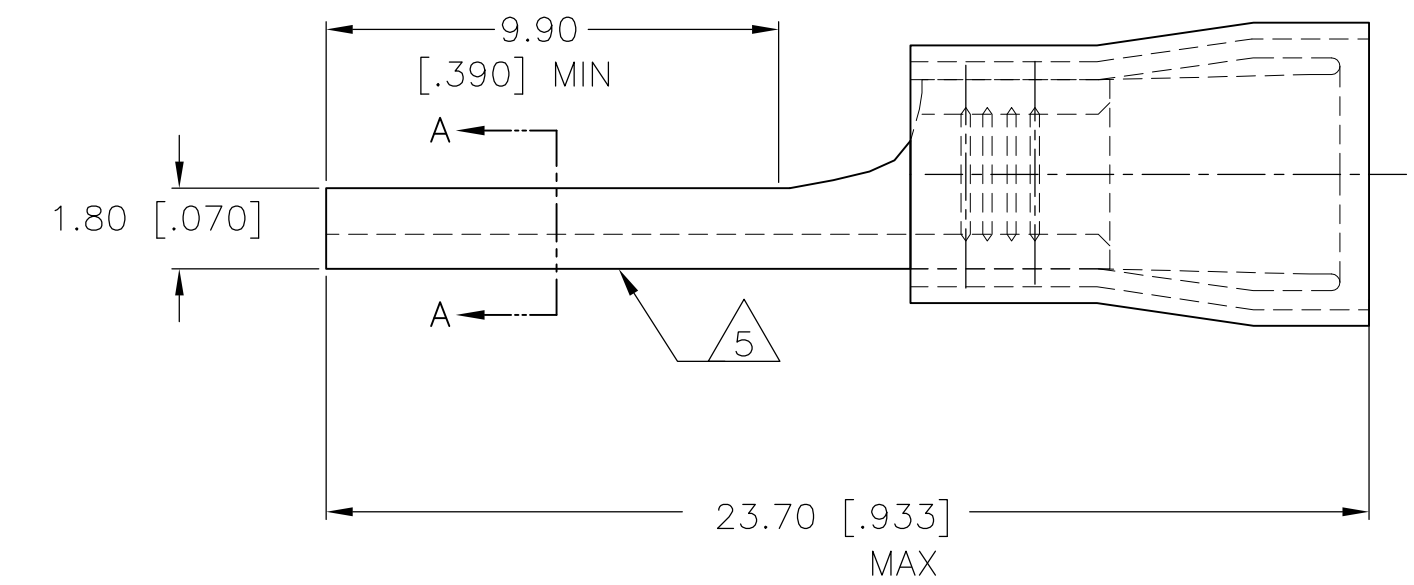
LOC	DIST	REVISIONS					
		P	LTR	DESCRIPTION	DATE	DWN	APVD
G	14		F1	REVISED PER ECO-14-003208	17MAR2014	NK	DR



**AMP**  
WIRE RANGE

16-14 AWG  
STRANDED

- 1 WIRE INSULATION DIA.  
2.92-4.32 [.115-.170] DIA.
- 2 MATERIAL: BODY - CU PER ASTM B152  
SLEEVE - CU PER ASTM B152  
INSULATION - NYLON
- 3 FINISH: BODY - TIN PL. PER ASTM B545  
SLEEVE - TIN PL. PER ASTM B545  
INSULATION - COLOR - BLUE
- 4 LOOSE PIECE P/N 165172
- 5 STAMP AMP 16-14\* APPROX AS SHOWN



SECTION A-A

4000	ON TAPE	696274-2
QTY	PACKAGE TYPE	PART NO

<b>AMP INCORPORATED</b> <b>CUSTOMER SERVICE SYSTEMS</b>		MAX RECOMMENDED OPERATING TEMPERATURE: 105°C [221° F]	THIS DRAWING IS A CONTROLLED DOCUMENT.		DWN JR RUTH 01DEC00 CHK T MICHIELUTTI 01DEC00 APVD T MICHIELUTTI 01DEC00	TE Connectivity			
FOR ADDITIONAL PRODUCT INFORMATION OR COPIES OF DRAWINGS AND TECHNICAL DOCUMENTS 1-800-522-6752	PRODUCT INFORMATION CENTER 1-800-522-6752	VOLTAGE RATING: 300V MAX	DIMENSIONS: mm [INCHES]	TOLERANCES UNLESS OTHERWISE SPECIFIED: 0 PLC ± - 1 PLC ± - 2 PLC ± 0.20 [.008] 3 PLC ± - 4 PLC ± - ANGLES ± -	PRODUCT SPEC - APPLICATION SPEC - WEIGHT -	NAME TERMINAL, WIRE PIN, PIDG WIRE SIZE, 16-14 AWG			
FOR APPLICATION TOOLING INFORMATION 1-800-722-1111	TOOLING ASSISTANCE CENTER 1-800-722-1111	CIRCULAR MIL AREA: 1.0-2.6mm <sup>2</sup> [1,974-5,131] STRANDED		MATERIAL 2	FINISH 3	SIZE A3	CAGE CODE 00779	DRAWING NO C-696274	RESTRICTED TO -
FOR ORDER ENTRY 1-800-526-5142	THIS DRAWING IS A CONTROLLED DOCUMENT FOR AMP INCORPORATED. IT IS SUBJECT TO CHANGE AND THE CONTROLLING ENGINEERING ORGANIZATION SHOULD BE CONTACTED FOR THE LATEST REVISION.		CUSTOMER DRAWING			SCALE 6:1	SHEET 1 OF 1	REV F1	

单击下面可查看定价，库存，交付和生命周期等信息

[>>TE Connectivity\(泰科\)](#)