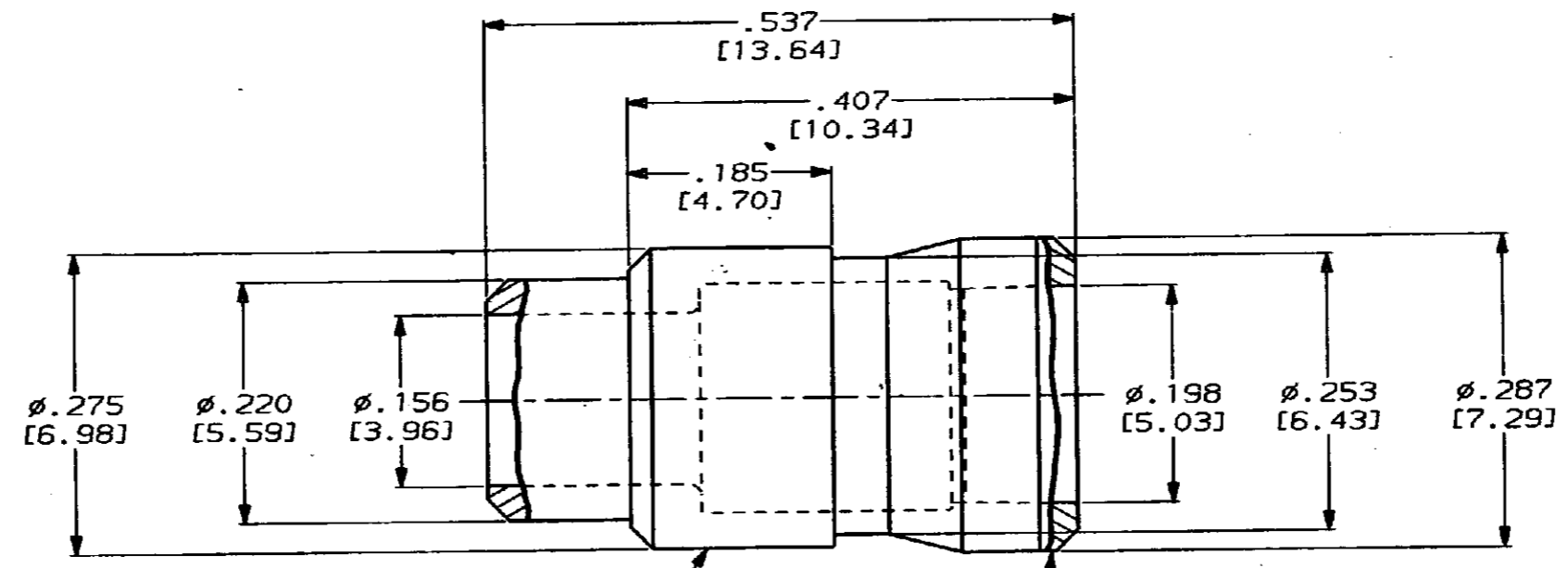


DRAWING MADE IN THIRD ANGLE PROJECTION

THIS DRAWING IS UNPUBLISHED. RELEASED FOR PUBLICATION .19
 © COPYRIGHT 19 BY AMP INCORPORATED. ALL INTERNATIONAL RIGHTS RESERVED.

PROD 4971 CODE	LOC DF	DIST AO	PJ	F	REVISIONS			DATE	APPD
					ZONE	LTR	DESCRIPTION		
					0		RELEASED PER NPR 89-0317 TW	8-8-89	SW/89



REDUCER BODY
 MATL: LEADED COPPER
 FINISH: .000015 MIN GOLD
 PER MIL-G-45204 OVER .000040
 MIN NICKEL PER QQ-N-290

END CAP
 MATL: POLYPROPYLENE

1. DIMENSIONS IN BRACKETS ARE IN MILLIMETERS. METRIC EQUIVALENTS ARE BASED UPON 1.00 INCH = 25.4 mm.

		446743-1	
		PART NO	
DO NOT SCALE PRINT. UNLESS SPECIFIED DIMENSIONS IN INCHES (mm) TOLERANCES ON: 2 PLC DEC ± .0005 (0.127) 3 PLC DEC ± .0005 (0.127) ANGLES ±		AMP INCORPORATED Harrisburg, Pa. 17105	
MATERIAL SEE CALLOUTS		NAME PIN CAVITY REDUCER, ARINC 600, SIZE 5 TO SIZE 12	
FINISH SEE CALLOUTS		SIZE B	FSCM NO 00779
		APPLICATION SPEC -	DRAWING NO 446743
		WEIGHT -	SCALE 8:1
			SHEET 1 OF 1

CUSTOMER DRAWING

单击下面可查看定价，库存，交付和生命周期等信息

[>>TE Connectivity\(泰科\)](#)