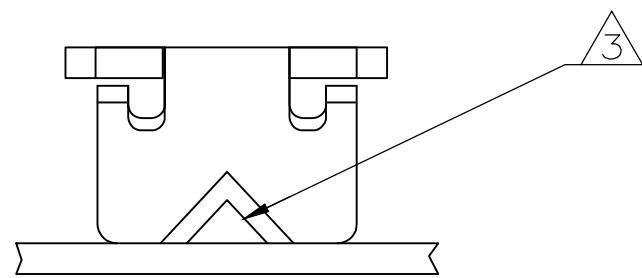
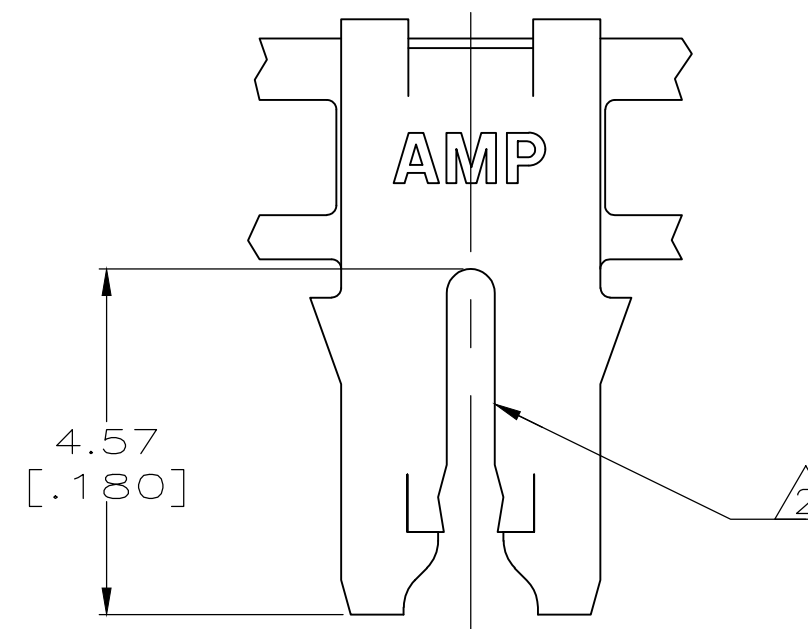
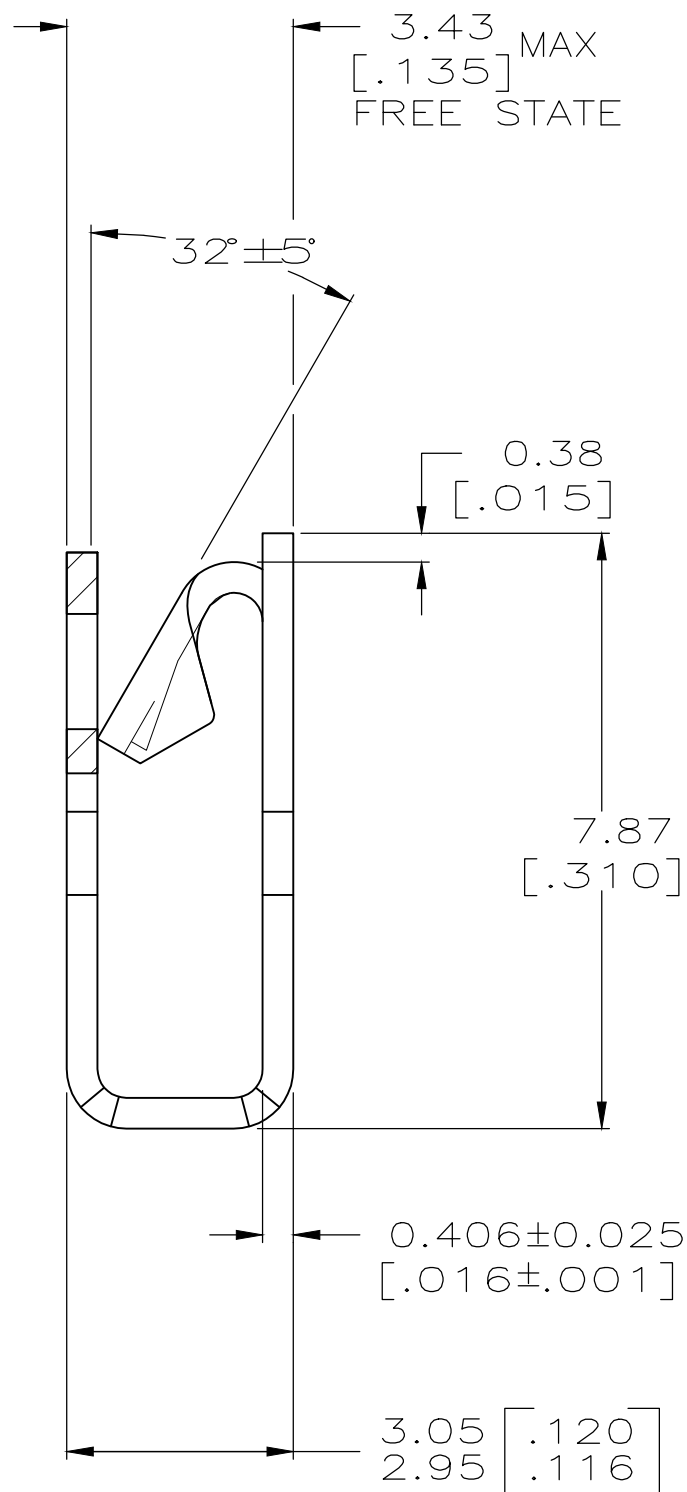
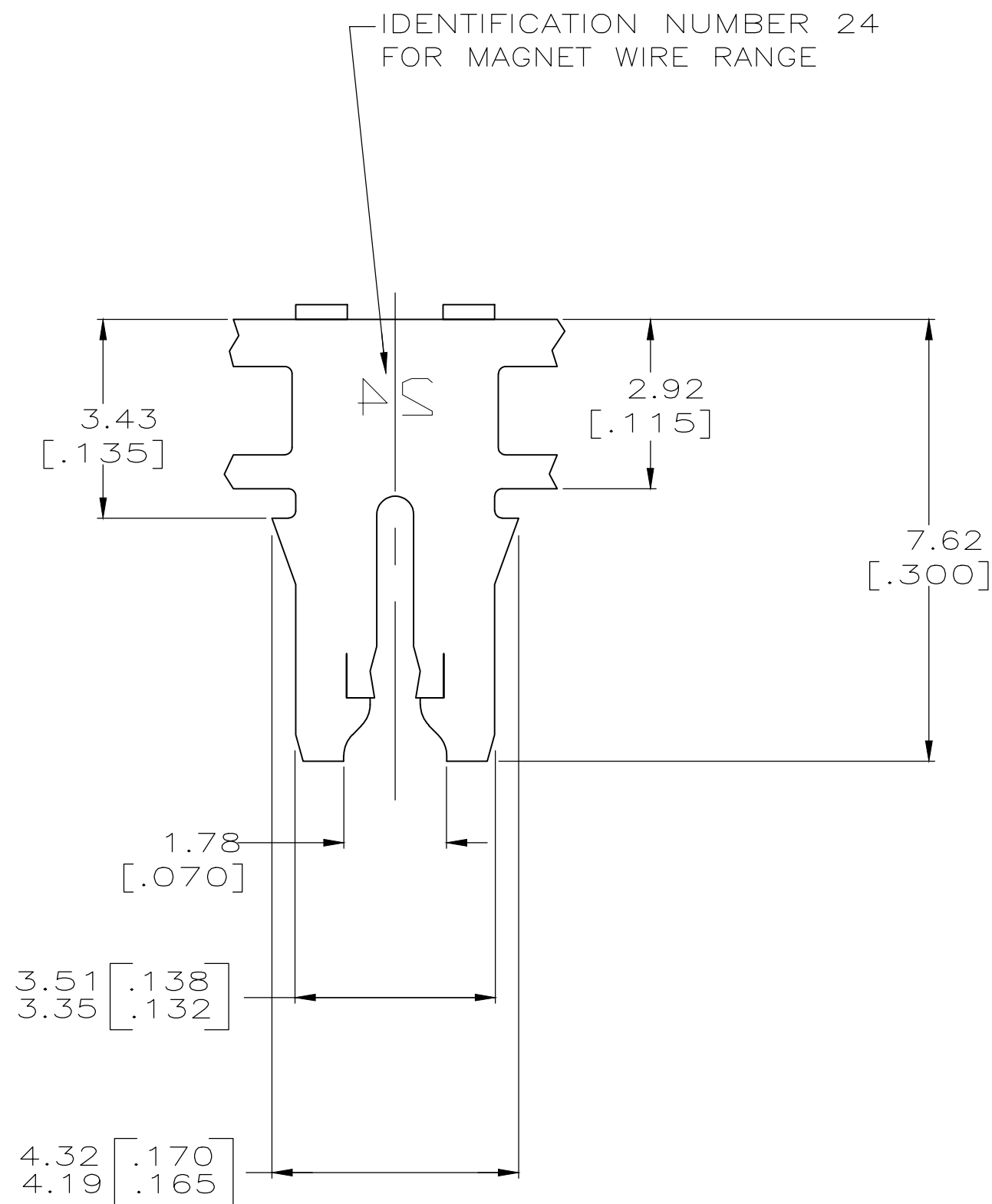


THIS DRAWING IS UNPUBLISHED. RELEASED FOR PUBLICATION
 © COPYRIGHT - By - ALL RIGHTS RESERVED.

REVISIONS				
P	LTR	DESCRIPTION	DATE	DWN APVD
T		REVISED PER ECR-19-011896	29SEP2019	ANDY KPS



- 1 CONTINUOUS STRIP ON REELS WITH TERMINALS LOCATED ON 5.59±0.08 [.220±.003] CENTERS.
- 2 SLOT ACCEPTS 0.80-1.20mm [#20-#16.5] AWG COPPER MAGNET WIRE.
SLOT ACCEPTS 0.95-1.20mm [#18.5-#16.5] AWG ALUMINUM MAGNET WIRE.
ALUMINUM WIRE RANGE APPLIES FOR POST-TIN PLATED VERSIONS ONLY. A SINGLE WIRE ONLY.
- 3 POKE-IN ACCEPTS A 0.50-0.90mm² [#20-#18] AWG SOLID OR FUSED STRANDED LEAD WIRE.
- 4 TIN PLATED
- 5 PAPER SPLICED - RESTRICTED TO BSH GERMANY
- 6 SPLICE FREE
- 7 PRODUCT REELED ON PLASTIC REEL



BRASS	STANDARD	7	1-62833-0
CU-NI-SI	STANDARD		62833-9
BRASS	STANDARD	6	62833-8
BRASS	STANDARD	5	62833-6
PHOSPHOR BRONZE	STANDARD		62833-4
PHOSPHOR BRONZE	REVERSED		62833-3
BRASS	REVERSED		62833-2
BRASS	STANDARD		62833-1
MATERIAL	REELING		PART NO.

THIS DRAWING IS A CONTROLLED DOCUMENT.		DWN R.R. BUCHEISTER JR. 1/SEP/94	TE TE Connectivity	
		CHK MS FEHER 02SEP94		
DIMENSIONS: INCHES		APVD MS FEHER 02SEP94	NAME	
TOLERANCES UNLESS OTHERWISE SPECIFIED:		PRODUCT SPEC 108-2012	TERMINAL, POKE-IN, 300 SERIES MAG-MATE	
0 PLC ± -		APPLICATION SPEC 114-2046	SIZE A2	CAGE CODE 00779
1 PLC ± -		WEIGHT 0	DRAWING NO C-62833	RESTRICTED TO -
2 PLC ± 0.25 [.010]		CUSTOMER DRAWING		
3 PLC ± -		SCALE 10:1	SHEET 1 OF 1	REV T
4 PLC ± -				
ANGLES ± -				
FINISH 4				
MATERIAL SEE TABLE				

单击下面可查看定价，库存，交付和生命周期等信息

[>>TE Connectivity\(泰科\)](#)