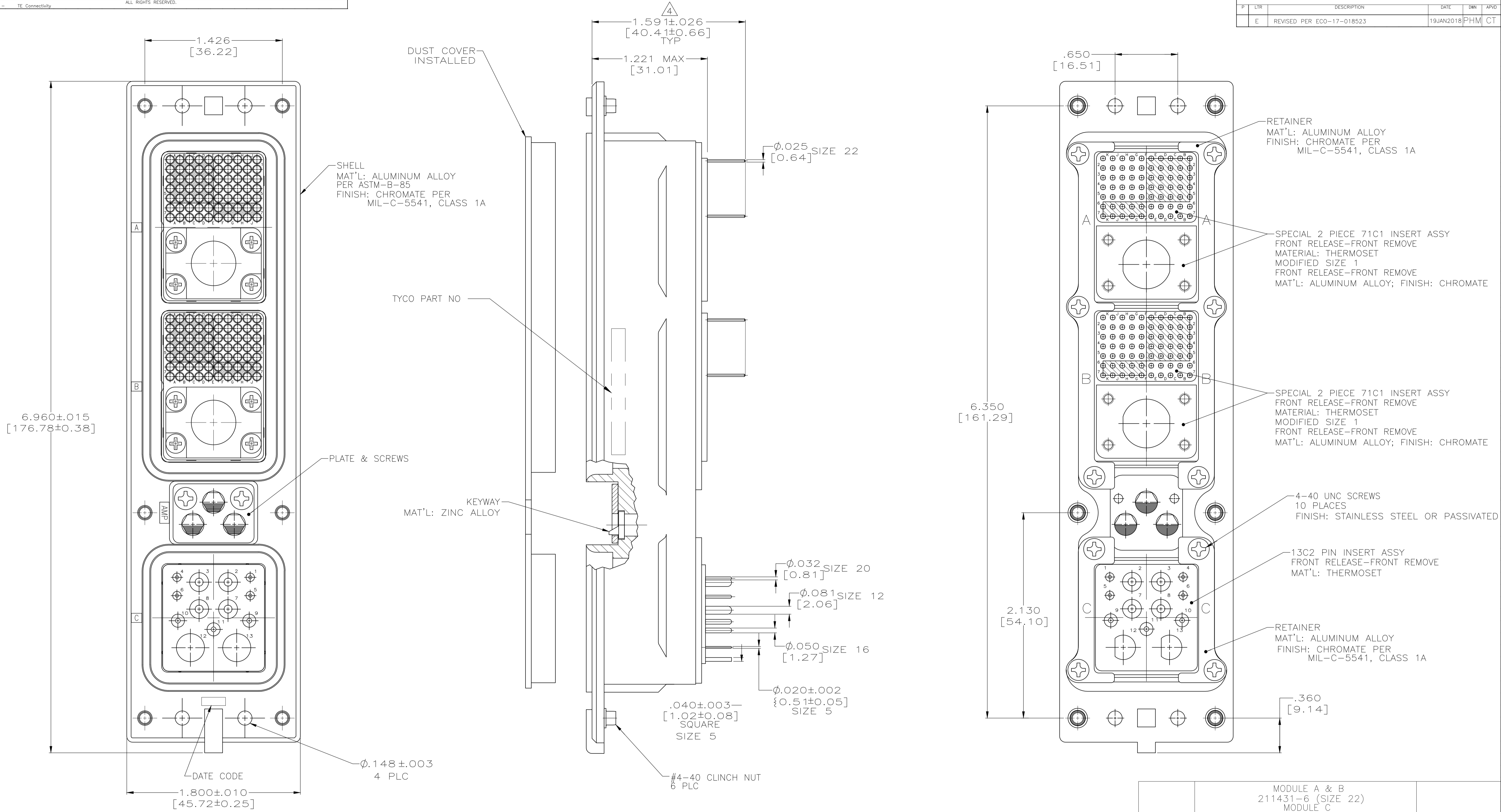


REVISIONS					
P	LTR	DESCRIPTION	DATE	DMN	APVD
E	REVISED PER	ECO-17-018523	19JAN2018	PHM	CT



- CONNECTOR DIMENSIONS ARE PER ARINC 600 SPECIFICATION.
- CONNECTOR IS SUPPLIED WITH CONTACTS (PER TABLE) ASSEMBLED AS SHOWN.
- KEYING SHOWN IN POSITION "01" FOR ILLUSTRATION ONLY. CONNECTORS SHIPPED WITH KEYING INSTALLED IN POSITION PER TABLE. FOR POSITION "00" KEYING HARDWARE SHIPPED UNASSEMBLED.
- WITH CONTACT FULLY SEATED IN CAVITY.
- SIZE 1 COAX CONTACTS NOT INCLUDED, MUST BE ORDERED SEPARATELY
- NOT RELEASED

KEYING POSITION	CONTACTS INCLUDED AND INSTALLED	PART NUMBER
05	MODULE A & B 211431-6 (SIZE 22) MODULE C P/N 2-448138-6 (SIZE 20) (QTY=4) P/N 448139-6 (SIZE 16) (QTY=3) P/N 448140-6 (SIZE 12) (QTY=4) P/N 1484201-3 (SIZE 5) (QTY=2)	1484613-2
05	MODULE A & B 211431-6 (SIZE 22) MODULE C P/N 2-448138-6 (SIZE 20) (QTY=4) P/N 448139-6 (SIZE 16) (QTY=3) P/N 448140-6 (SIZE 12) (QTY=4) P/N 1484201-3 (SIZE 5) (QTY=1)	1484613-1

THIS DRAWING IS A CONTROLLED DOCUMENT.

APPROVED: S. GLATFELTER 10-24-02

DATE: 10-24-02

NAME: RCPT ASSY, SIZE 2, ARINC 600

PRODUCT SPEC: RCPT ASSY, SIZE 2, ARINC 600

APPLICATION SPEC: RCPT ASSY, SIZE 2, ARINC 600

SIZE: A1

WEIGHT: 0.000000

CUSTOMER DRAWING

SCALE: 2:1

SHEET: 1 OF 1

REV: E

单击下面可查看定价，库存，交付和生命周期等信息

[>>TE Connectivity\(泰科\)](#)