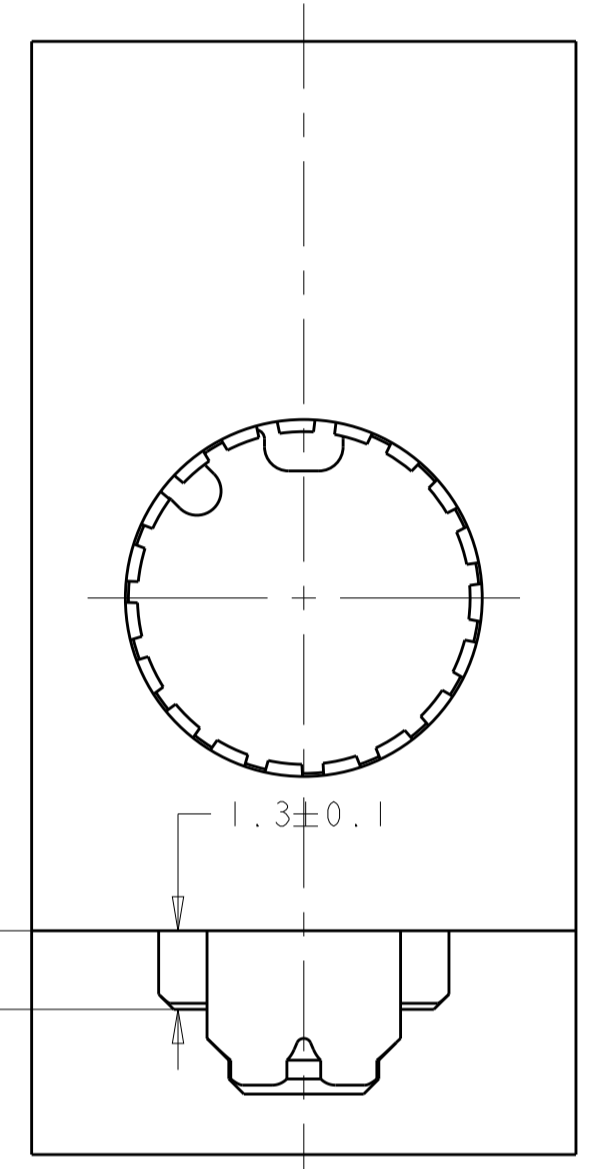
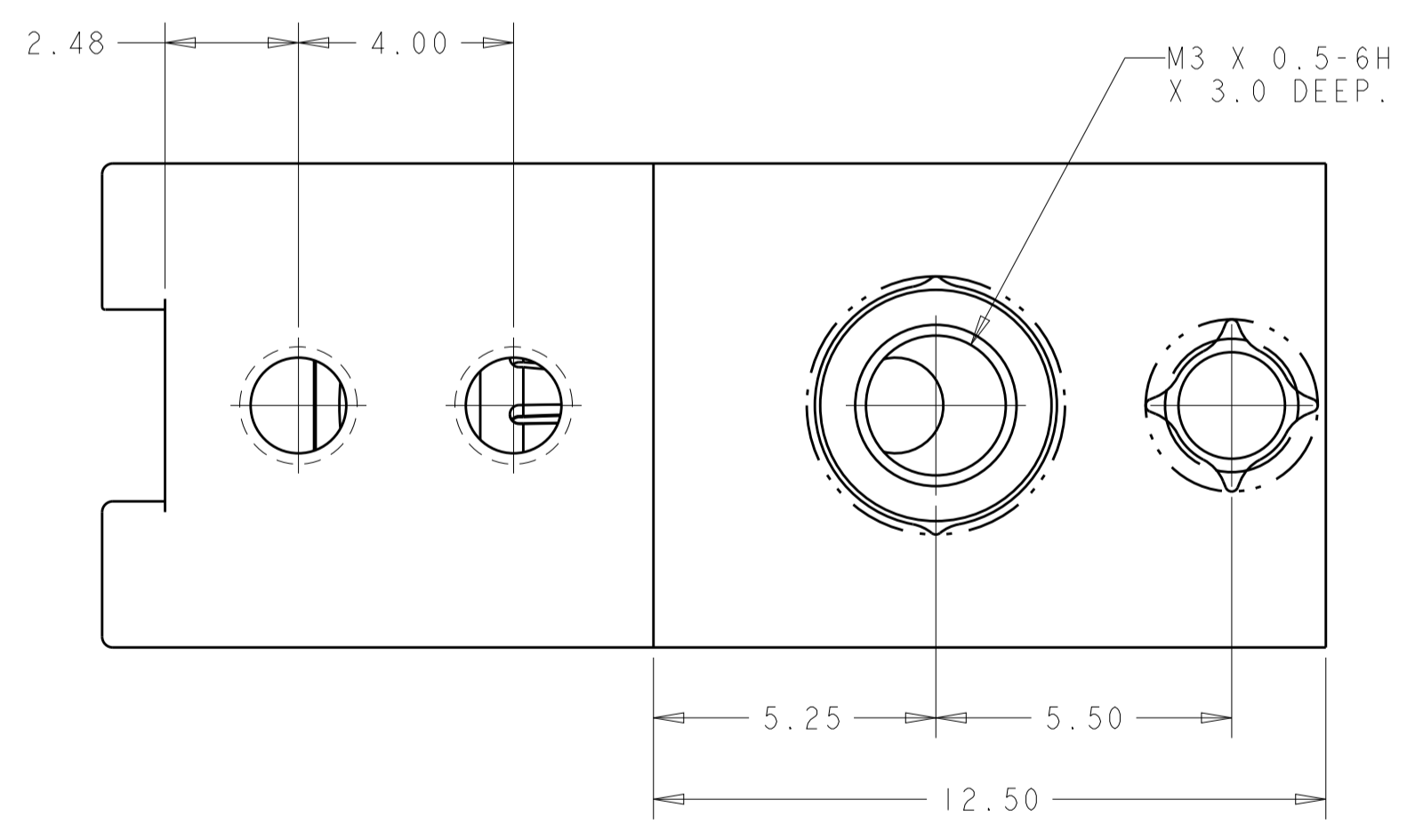
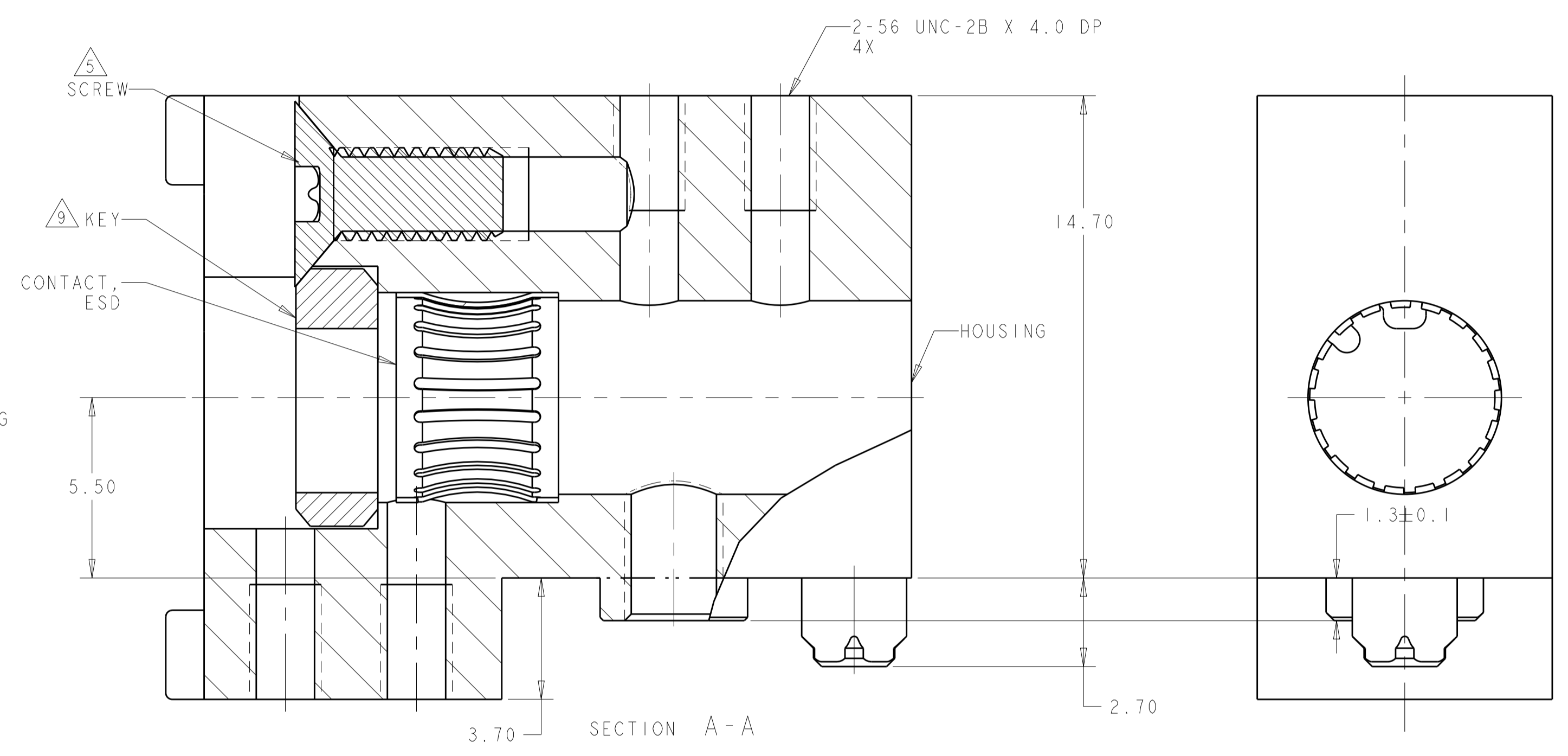
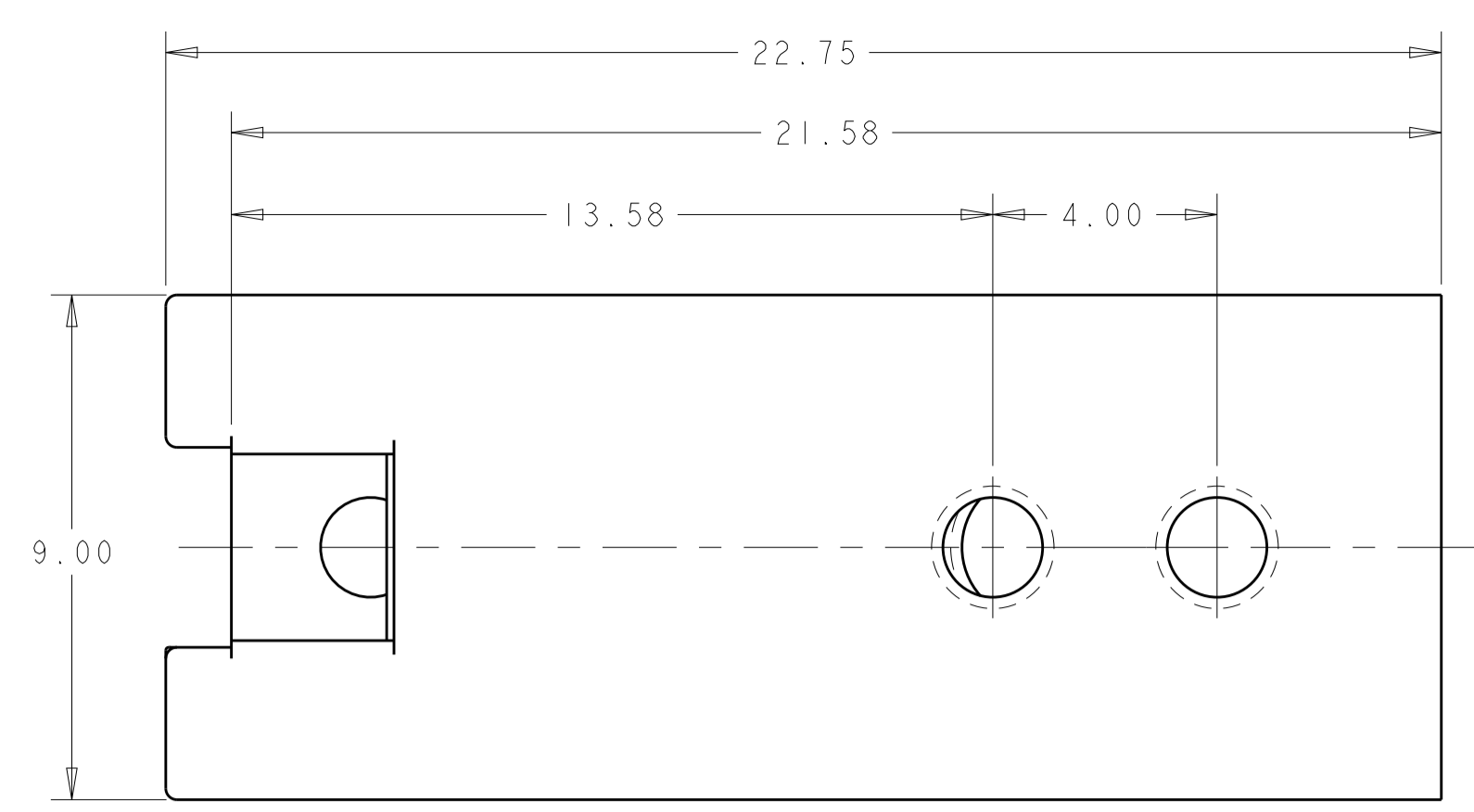
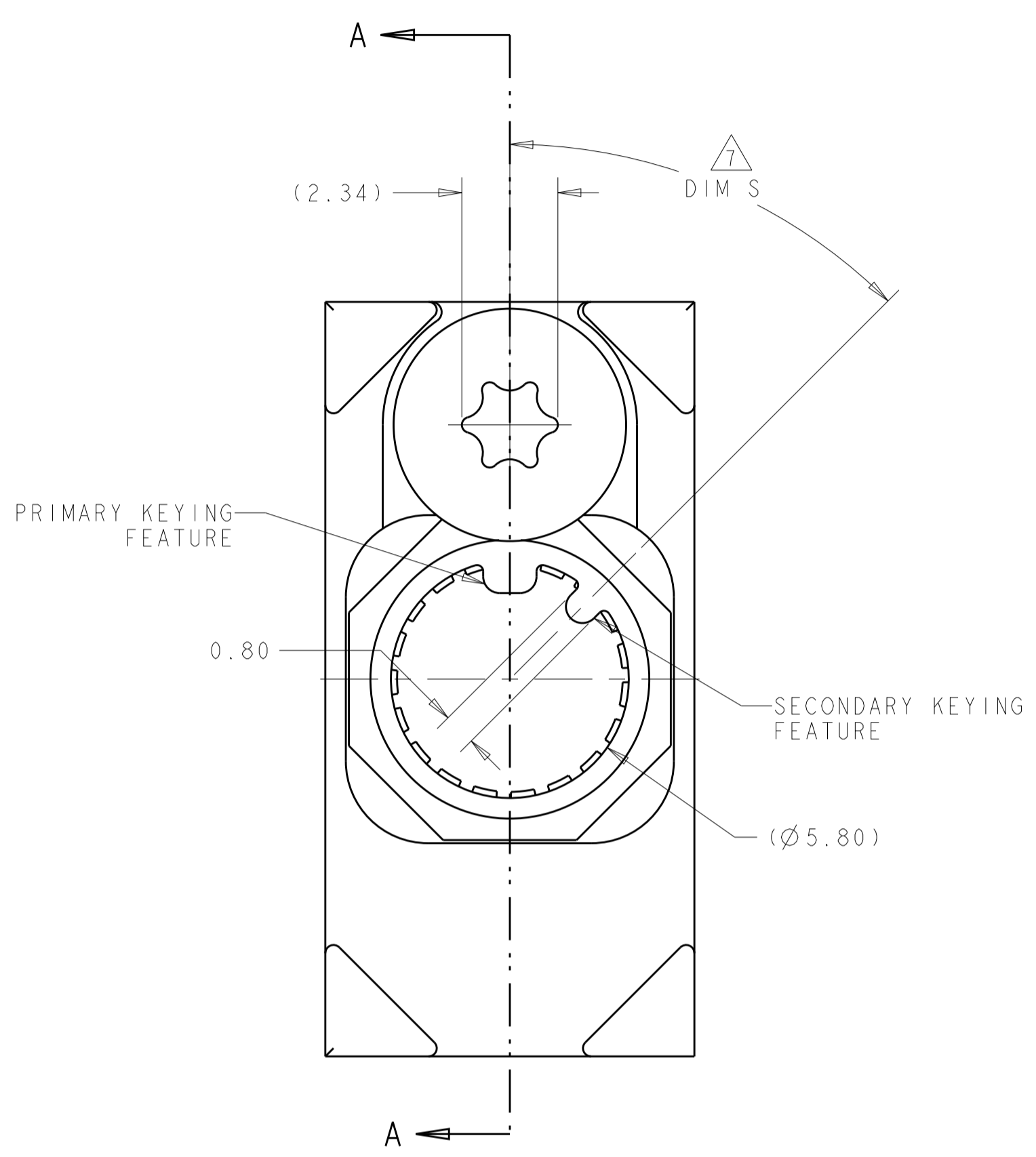
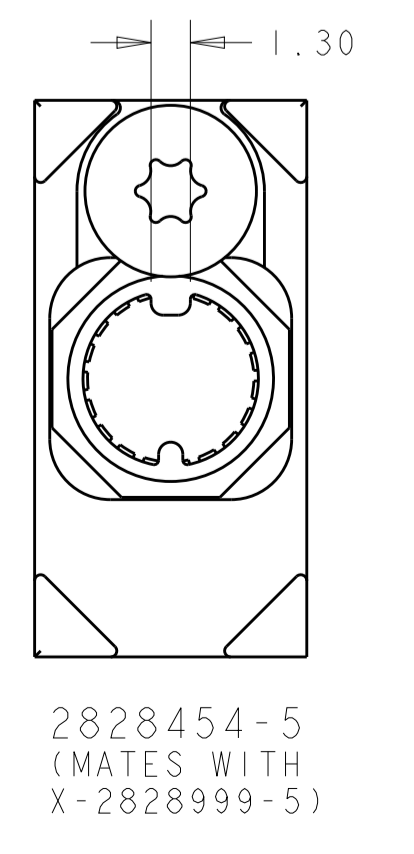
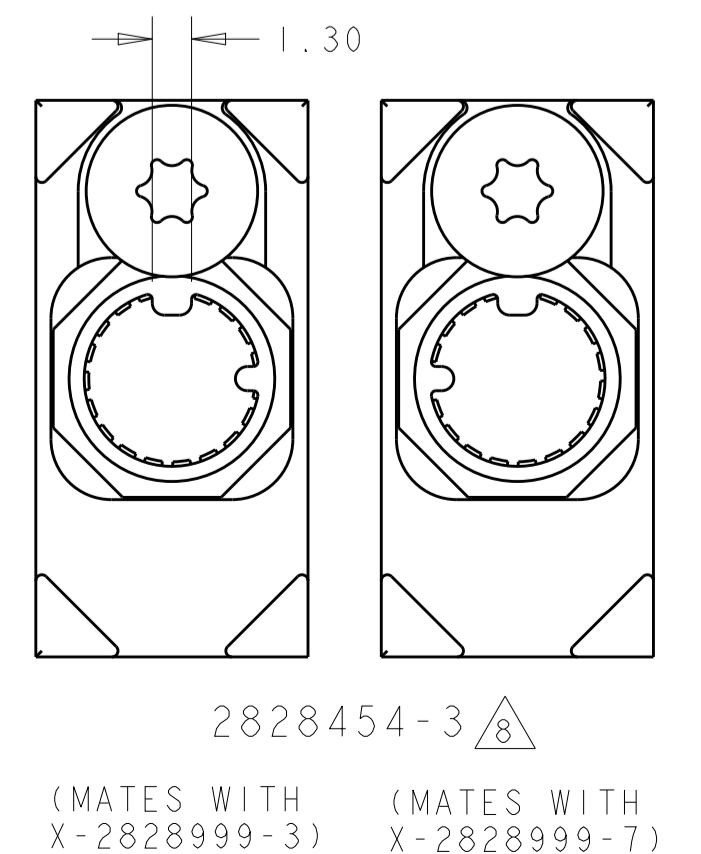
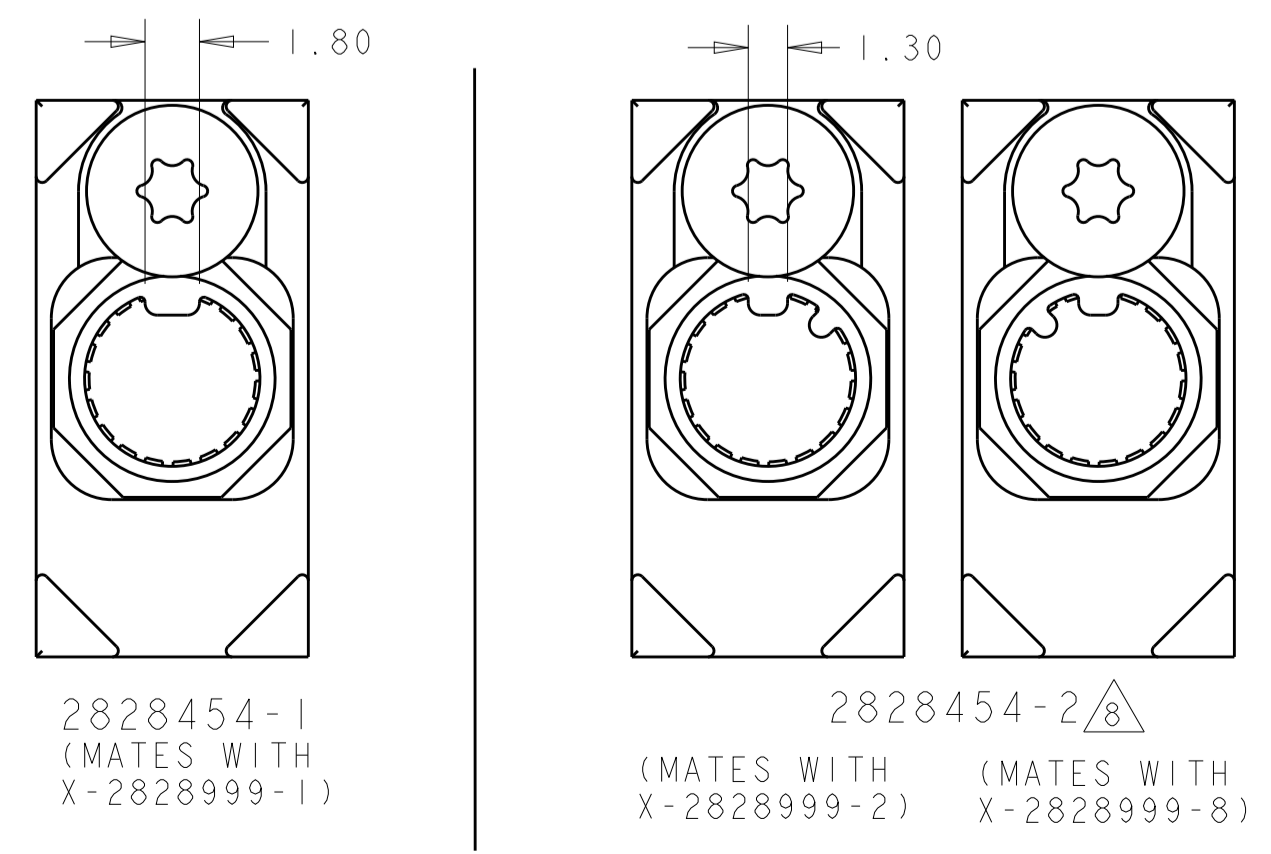
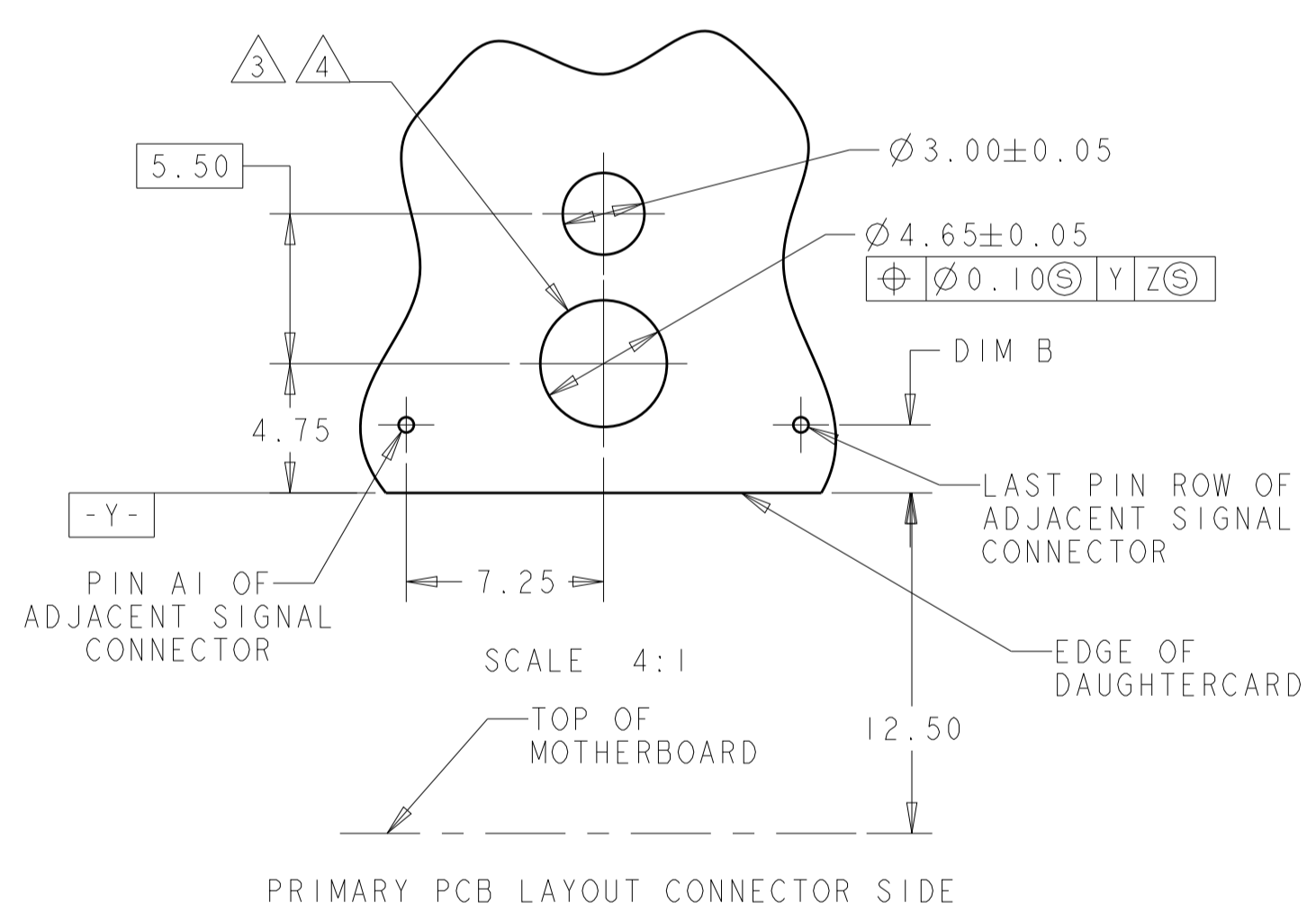


- 1 MATERIAL: HOUSING: ALUMINUM 6061.
CONTACT: BeCu
KEY: STAINLESS STEEL
- 2 FINISH:
HOUSING: 0.025 MIN ELECTROLESS NICKEL
PER AMS-C-26074, GRADE A, CLASS 4.
CONTACT: 1.27µm MIN Au OVER 1.02µm MIN
NICKEL.
- 3 HOLE FOR POSITIVE RETENTION SCREW.
- 4 GROUND PAD Ø5mm ON BOTH SIDE OF PCB.
- 5 4-40 UNC X .25 LG. HEXALOBULAR 100 DEGREE
FLAT HEAD SCREW OR TORX HEAD EQUIVALENT,
ACCORDING TO ISO 10664.
MATERIAL: STAINLESS STEEL, PASSIVATED
- 6 NO SECONDARY KEYING FEATURE
- 7 DENOTES RELATIONSHIP BETWEEN PRIMARY AND
SECONDARY KEYING FEATURE
- 8 KEY CAN BE REMOVED AND FLIPPED TO ACHIEVE DESIRED
ANGLE BETWEEN PRIMARY AND SECONDARY KEYS
- 9 KEY CAN BE ROTATED IN INCREMENTS OF 45° CREATING 8
POSSIBLE KEYING VARIATIONS FOR 2828454-1 AND
2828454-5 AND 16 POSSIBLE VARIATIONS FOR 2828454-2,
2828454-3, AND 2828454-4.
- 10. ESD CONTACT TO BE ASSEMBLED INTO HOUSING. SCREW
AND KEY SUPPLIED IN KIT FORM.

REVISIONS					
P.	LTN	DESCRIPTION	DATE	DMN	APVD
A		RELEASED PER ECO 19-001328	1-30-19	CT	DH



180°	2828454-5
135° OR 225°	2828454-4
90° OR 270°	2828454-3
45° OR 315°	2828454-2
	2828454-1
S	PART NUMBER

THIS DRAWING IS A CONTROLLED DOCUMENT.

DMN: R. MILLER 03DEC2015
CHK: A. TSANG 03DEC2015

TE Connectivity

NAME: GUIDE MODULE, CLOCKABLE KEYED, 64 POSITION, CUSTOM APERTURE, RIGHT ANGLE, MULTIGIG

PRODUCT SPEC: -
APPLICATION SPEC: -
WEIGHT: ~ 6.9 g

SIZE: A1 | 00779 | C=2828454

CUSTOMER DRAWING | SCALE: 4:1 | SHEET: 1 of 1 | REV: A

单击下面可查看定价，库存，交付和生命周期等信息

[>>TE Connectivity\(泰科\)](#)