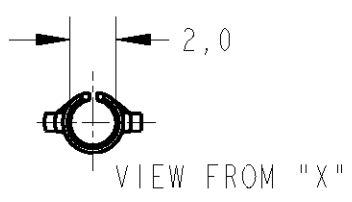
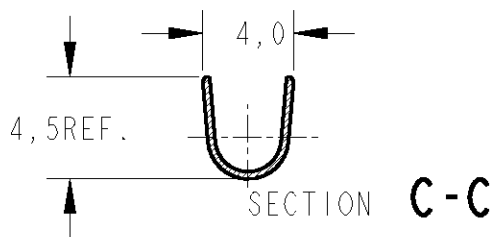
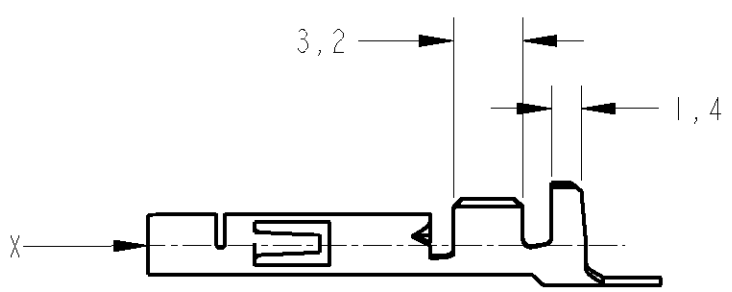
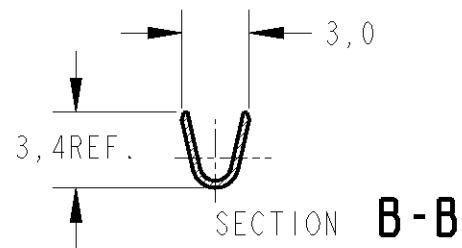
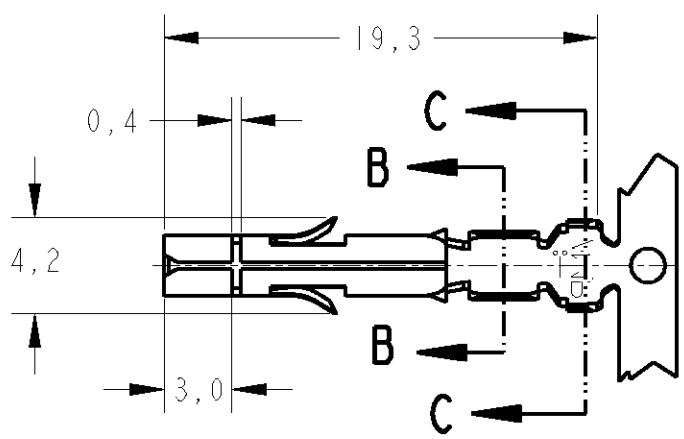


| LOC | DIST | REVISIONS               |           |     |      |
|-----|------|-------------------------|-----------|-----|------|
| P   | LTR  | DESCRIPTION             | DATE      | DWN | APVD |
| AP  | -    |                         |           |     |      |
|     | D    | REDRAW                  | 27MAY2004 | H.C | WLS  |
|     | E    | REVISED BY ECR05-017239 | 14FEB2006 | H.C | WLS  |



$\triangle 2$  -SUPERSEDED BY PN-926882-3 OR PN-350536-3

| LOOSE PIECE | FINISH                | MATERIAL               | PART NUMBER            |
|-------------|-----------------------|------------------------|------------------------|
| —           | POST-PLATED/ESTANHADO | BRASS/LATÃO            | 881111-3               |
| 350550-3    | TIN-PLATED/ESTANHADO  | PH.BRONZE/BRONZE FOSF. | 881111-2 $\triangle 2$ |
| 350550-1    | TIN-PLATED/ESTANHADO  | BRASS/LATÃO            | 881111-1               |

THIS DRAWING IS UNPUBLISHED. RELEASED FOR PUBLICATION 20 BY TYCO ELECTRONICS CORPORATION. ALL RIGHTS RESERVED. COPYRIGHT 20

|  |                     |           |   |           |            |               |
|--|---------------------|-----------|---|-----------|------------|---------------|
| DIMENSIONS:<br>mm                      | DWN<br>H.C. CANTERI | 27MAY2004 | MATERIAL  | -         | FINISH     | -             |
|  | CHK<br>W.L. STEFANI | 27MAY2004 | TYCO ELECTRONICS do Brasil LTDA.<br>Sao Paulo, Brasil |           |            |               |
| TOLERANCES UNLESS OTHERWISE SPECIFIED: | APVD                | -         |   |           |            |               |
| 0 PLC ±-                               | PRODUCT SPEC        |           | NAME  |           |            |               |
| 1 PLC ±0,4                             | INS. DIA. 3,30mm.   |           | SOCKET, MATE-N-LOK, UNIVERSAL                         |           |            |               |
| 2 PLC ±-                               | APPLICATION SPEC    |           | SIZE  | CAGE CODE | DRAWING NO | RESTRICTED TO |
| 3 PLC ±-                               | WIRE RANGE 20/14AWG |           | A 4   | 00779     | C=881111   | -             |
| 4 PLC ±-                               | WEIGHT -            |           | CUSTOMER DRAWING                                      |           |            |               |
| ANGLES ±1°                             |                     |           | SCALE   | -         | SHEET      | OF            |
|  |                     |           |   |           | REV        | E             |

单击下面可查看定价，库存，交付和生命周期等信息

[>>TE Connectivity\(泰科\)](#)