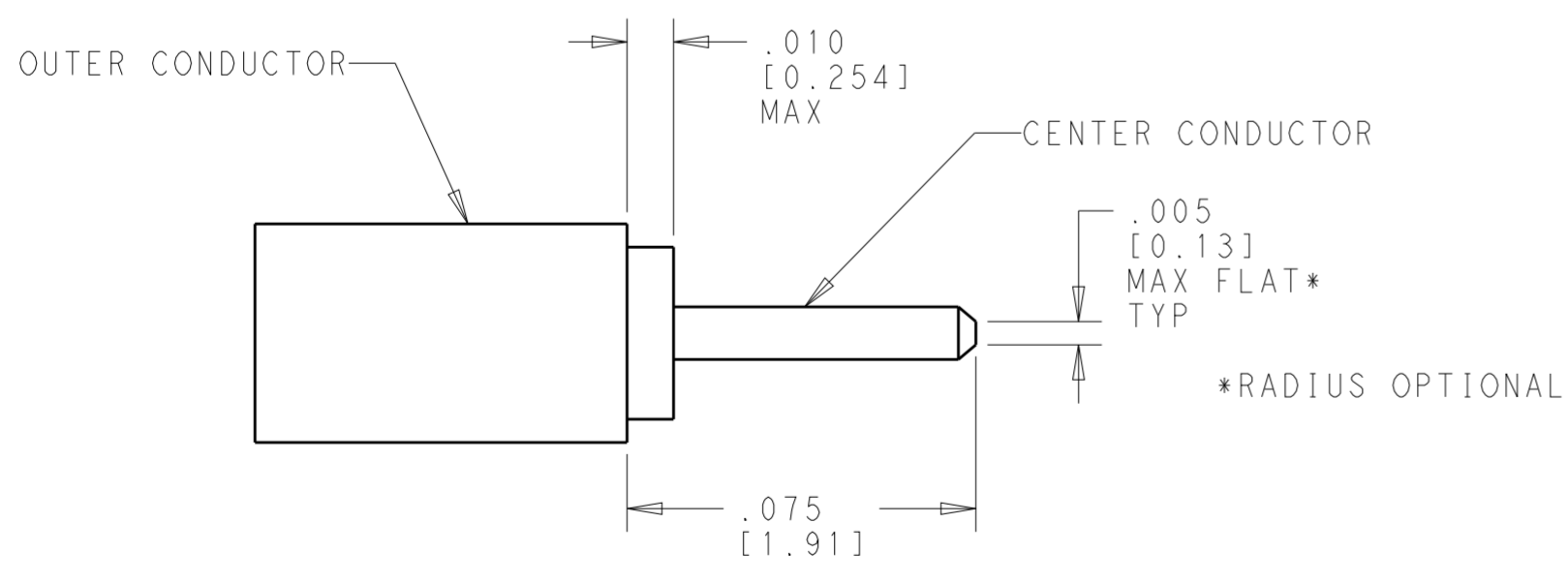
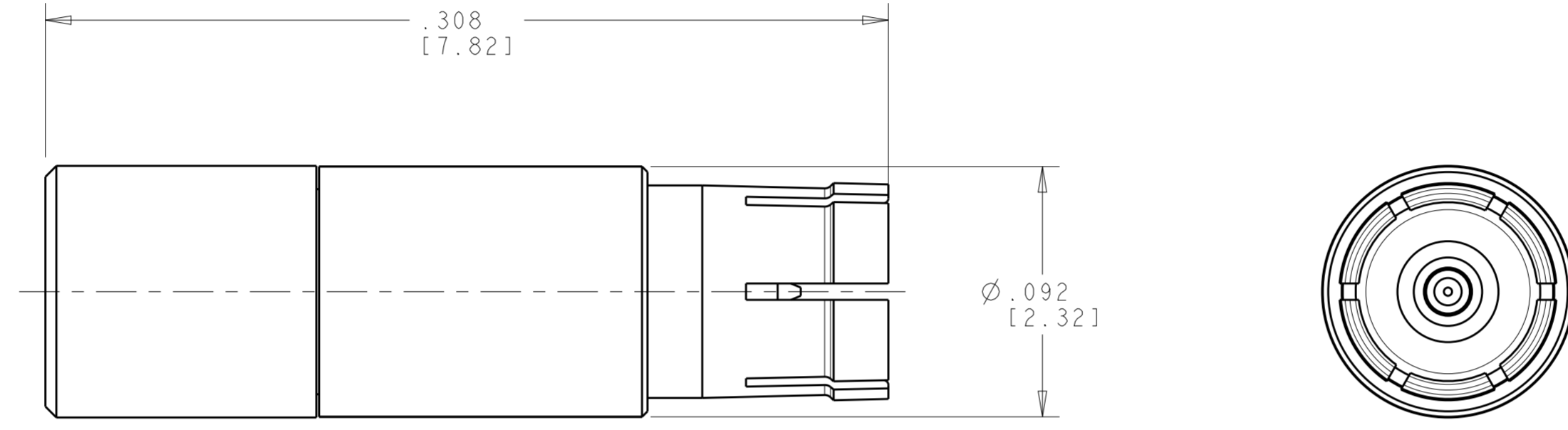


THIS DRAWING IS UNPUBLISHED. RELEASED FOR PUBLICATION 20
 © COPYRIGHT 20 BY - ALL RIGHTS RESERVED.

REVISIONS				
P	LTR	DESCRIPTION	DATE	APVD
	A	RELEASED	11APR2018	KM DW



- 1 MATERIAL:
 BODY AND CENTER CONTACT: COPPER ALLOY
 INSULATOR: TEFLON (PTFE)
- 2 FINISH: FRONT BODY AND CENTER CONTACT: 50-90 μIN GOLD PLATE OVER NICKEL
 REAR BODY: 3-15 μIN GOLD PLATE OVER NICKEL

SCALE 25:1
 CABLE PREPARATION FOR
 Ø.047 SEMI-RIGID CABLES

2302339-1
 PART NO.

THIS DRAWING IS A CONTROLLED DOCUMENT.		DWN K. MILLER 31MAY2016	TE Connectivity	
DIMENSIONS: INCHES [mm]		CHK D. WILSON 31MAY2016		
		APVD D. WILSON 11APR2018	NAME NanoRF SOCKET CONTACT ASSEMBLY	
TOLERANCES UNLESS OTHERWISE SPECIFIED:		PRODUCT SPEC 108-163006	SIZE -	
0 PLC ±	1 PLC ±	APPLICATION SPEC 408-163016	CAGE CODE A200779	DRAWING NO C-2302339
2 PLC ±	3 PLC ±.005[0.13]	WEIGHT -	RESTRICTED TO -	
4 PLC ±	ANGLES ±	SCALE 20:1 SHEET 1 OF 1 REV A		
FINISH		CUSTOMER DRAWING		

单击下面可查看定价，库存，交付和生命周期等信息

[>>TE Connectivity\(泰科\)](#)